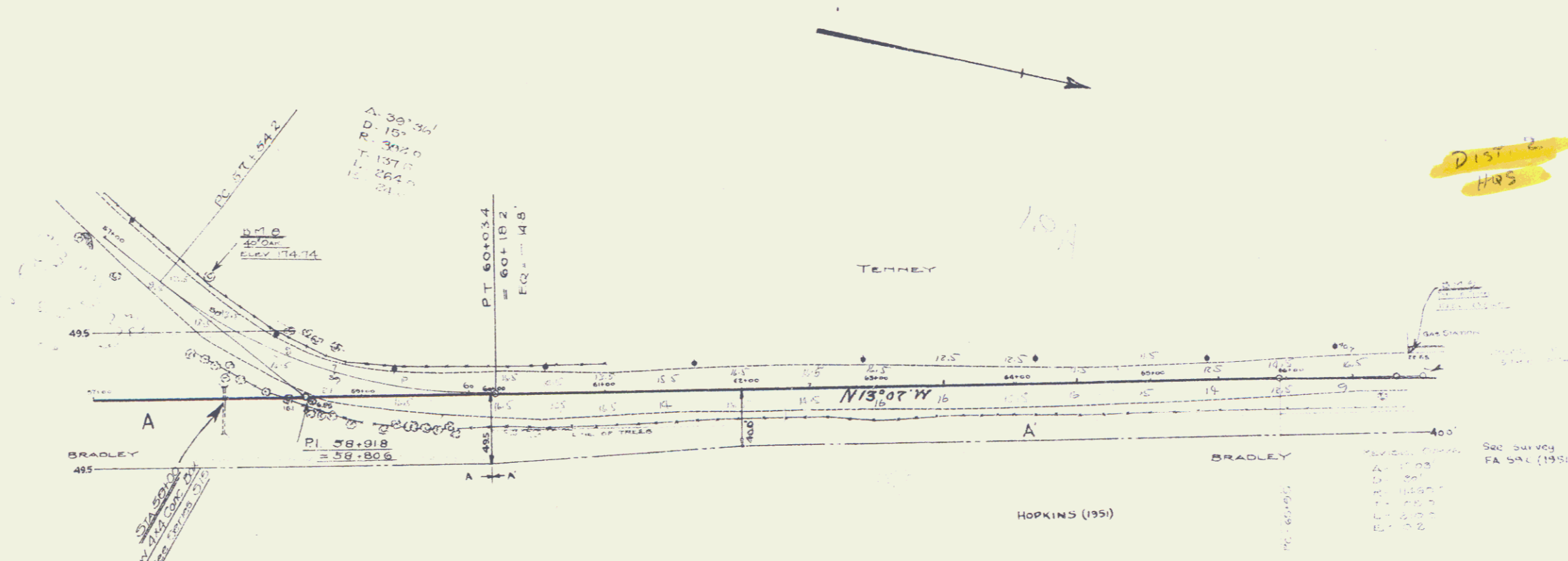


CABLE GUARD RAIL REQUIRED
 STA 54+85 TO STA 60+00 LENGTH 515'
 STA 54+81 TO STA 58+00 LENGTH 319'
 STA 58+00 TO STA 60+00 LENGTH 200'
 TOTAL FOR SHEET = 1034 FT

NEW CULVERTS REQUIRED
 STA 00+00 - 4x4 CONCRETE BOX CULVERT
 CONCRETE CLASS A (N-4) 2600 LBS
 REIN. STEEL 2649



DIST. 2
 HRS

Parcel	Instrument Kind	Date	Grantor	Grantee	Recorded Book	Page	Date	Remarks
A	QCD	5-1-29	Richards M. Bradley	Town of Brattleboro	67	156	5-28-29	See sheet 6
A	W.D.O.E.	11-28-51	DAVID & HELEN B. HOPKINS	STATE OF VERMONT	91	304	12-3-51	See Sheet 680

NOTE:
 IF SO DESIRED BY THE ENGINEER
 THE 5% GRADE MAY BE REVISED
 TO MORE SATISFACTORILY USE
 THE EXCESS CUT OBTAINED

