

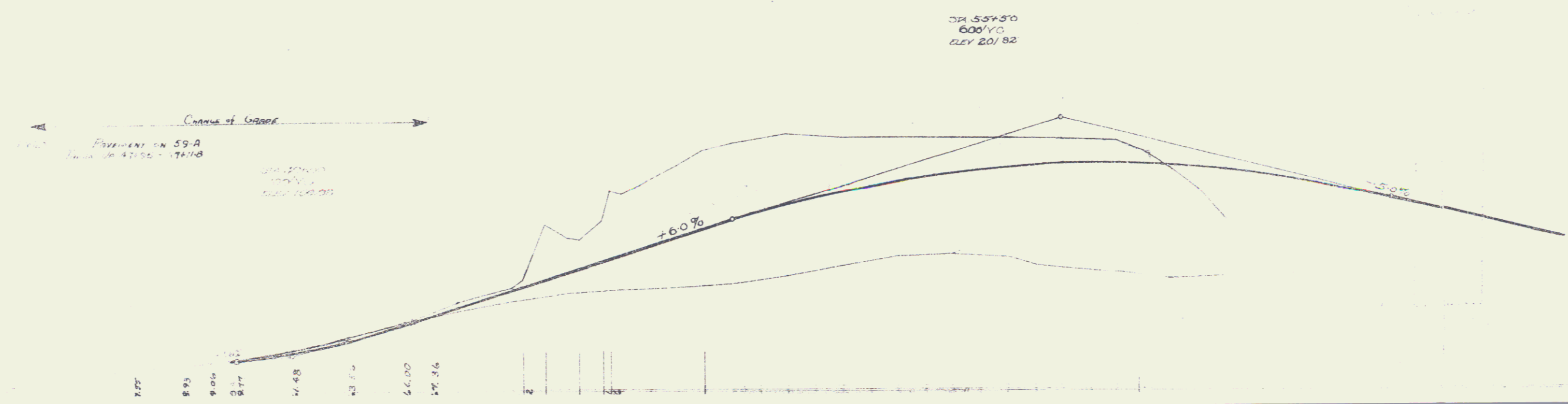
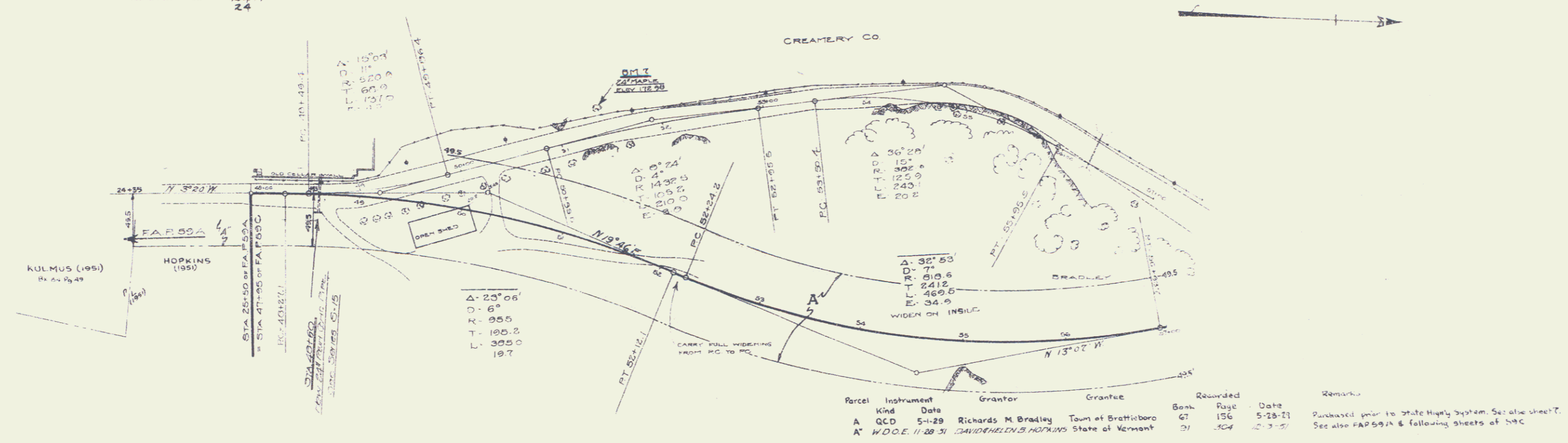
FED. ROAD DIST. NO.	STATE	FED. AID PROJ. NO.	FISCAL YEAR	SHEET NO.	TOTAL SHEETS
1	V	53	1947	5	25

WOOD BOARD RAIL REQUIRED
 STA 47+00 TO STA 47+10 LENGTH 10 FT
 STA 47+10 TO STA 47+20 LENGTH 10 FT
 TOTAL RAIL REQUIRED = 20 FT

CABLE GUARD RAIL REQUIRED
 STA 46+00 TO STA 49+25 LENGTH 325 FT

NEW CULVERTS REQUIRED
 STA 40+00 - 24" CORR. CONCRETE PIPE - 30'
 CONC. CLASS 'B' (1-21-5) - 12.5' @ 0.40
 FROM 5781 - 790

CULVERTS FOR DRIVEWAY
 MILK PLANT
 12" CORR. IRON PIPE 42'
 CONC. CLASS 'B' (1-21-5) @ 6 c.y.



6
5