

NEW CULVERTS REQUIRED
 STA 31+00 - 15" CORR GALV METAL PIPE WITH DROP INLET - 30 ft
 CONCRETE CLASS C (1-1/2") - 2.0 cu yds
 REIN. STEEL - 82 lbs
 STA 33+00 - ON RIGHT UNDER ORIGINAL
 10" CORR GALV METAL PIPE - 34' LONG
 CONCRETE CLASS C (1-1/2") - 1.0 cu yds
 REIN. STEEL - 82 lbs
 STA 35+00 - ON LEFT UNDER DRIVEWAY
 12" CORR GALV METAL PIPE - 44' LONG
 CONCRETE CLASS C (1-1/2") - 1.8 cu yds
 REIN. STEEL - 12 lbs

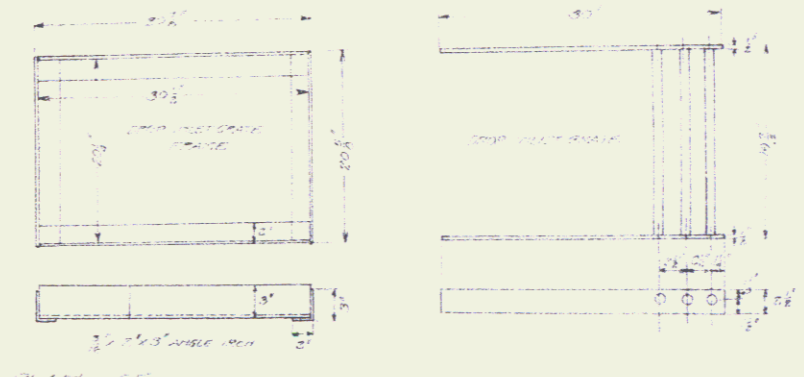
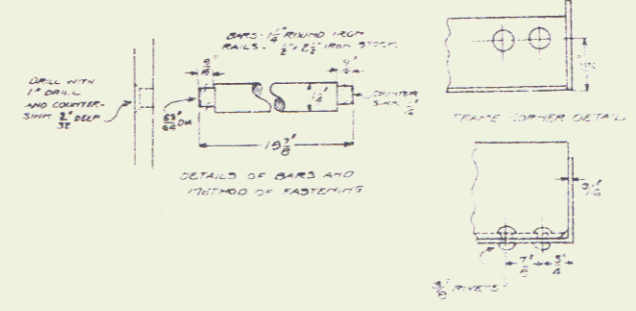
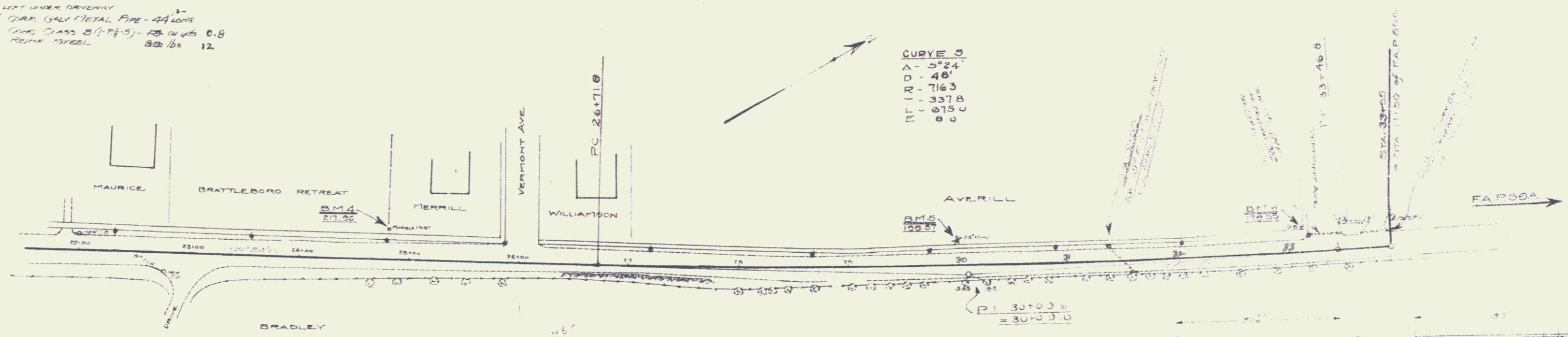
NEW CATCH BASIN REQUIRED
 ON RIGHT AT STA 22+50 - 1

Cable GUARD RAIL REQUIRED
 ON RIGHT
 STA 29+25 TO STA 31+00 - LENGTH - 85 FT
 29725 33 PIS 368

NEW DROP INLETS REQUIRED
 STA 31+00
 STA 31+00

GRAVEL COBBLE GUTTER ON LEFT
 33+49 - 34+51 } 4 52.10
 34+01 - 34+05 }

CURVE 3
 A - 5724
 D - 48'
 R - 7163
 PI - 3378
 PT - 6150
 E - 0



STA 27+00
 100' VC
 REV 214-85

PLAN OF CATCH BASIN, DROP INLET GRADE
 AS DIRECTED BY ENGINEER THIS SCALE DRAWING IS TO BE USED ON ALL PARTS OF THIS PROJECT UNLESS OTHERWISE SPECIFIED

