

**NEW CURB AND GUTTER REQUIRED**

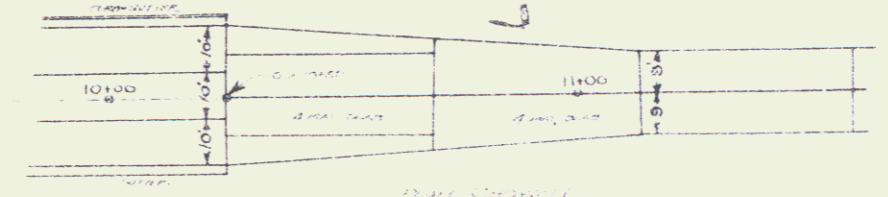
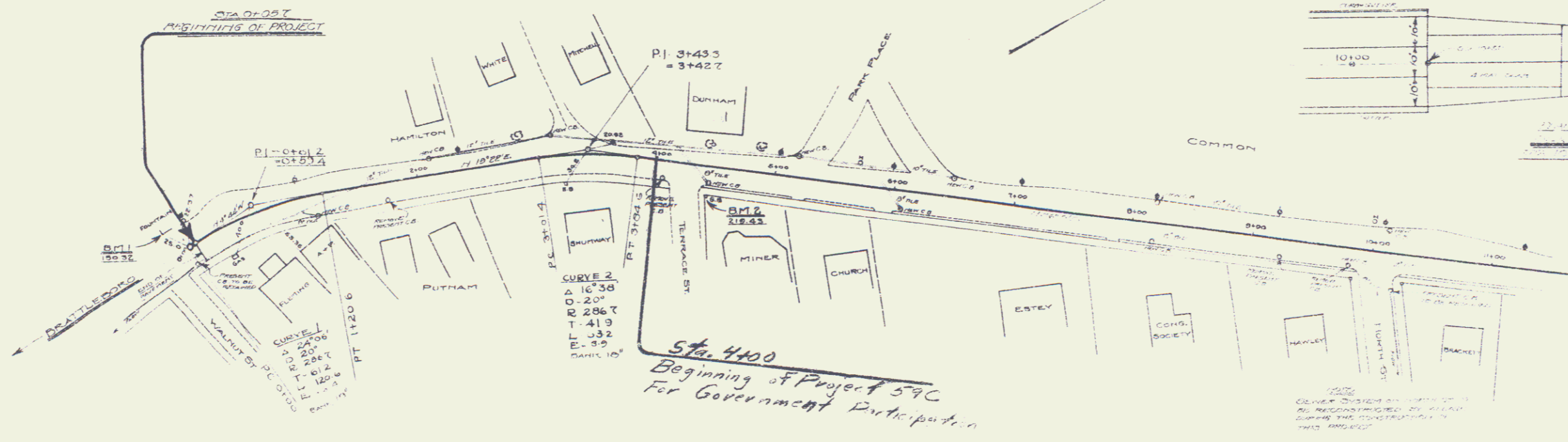
ON LEFT - DIA 0'10" IN DIA 10"ES  
 CURB TO BE OMITTED TO PROVIDE ACCESS  
 TO ALL INTERSECTING DRIVEWAYS AND STREETS

**BRICK CATCH BASINS REQUIRED**

| ST. LEFT             | ST. RIGHT |
|----------------------|-----------|
| STA 2+10             | STA 1+10  |
| • 3+15               | • 2+20    |
| • 5+20               | • 4+25    |
| • 6+50               | • 6+10    |
| • 8+20               | • 8+20    |
| • 10+10              | • 9+60    |
| TOTAL FOR SHEET = 12 |           |

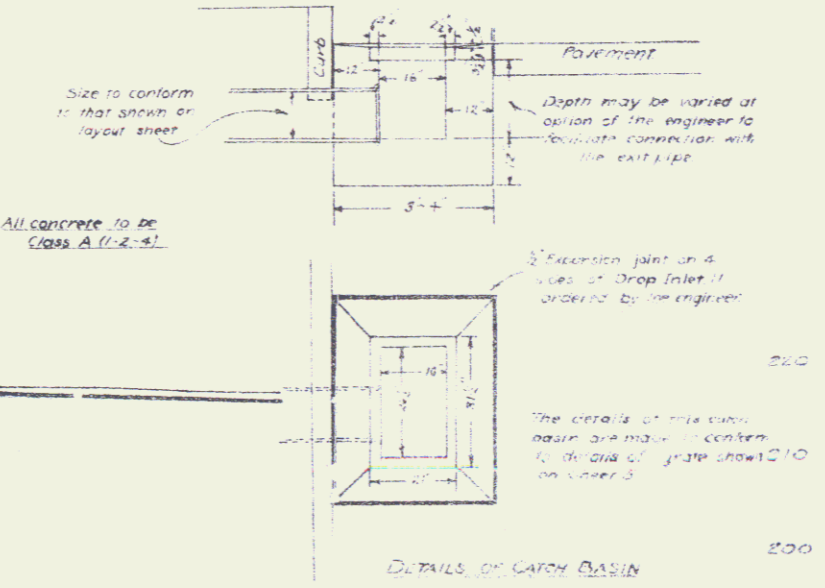
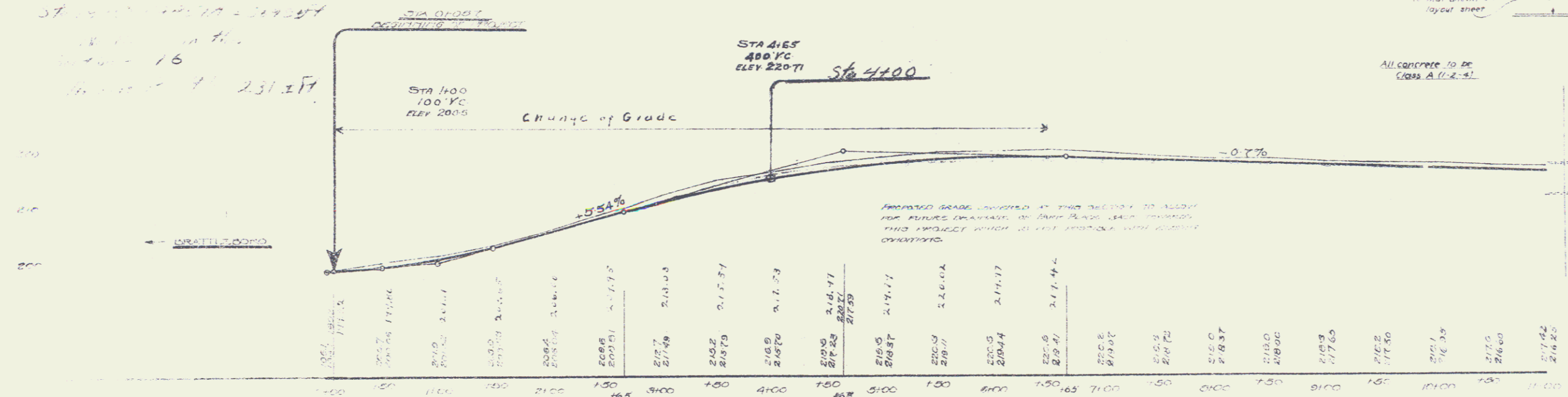
For Vitriified Clay Pipe  
 See Pages 56-58 in Field Book

Brick Catch Basins  
 Total for Project = 10



Style of Catch Basins shall be as shown in the standard brick catch basin details on Standard Specifications Sheet 5-16.

*Vertical Curve*  
 From Sta. 18+50 to Sta. 24+00  
 Length = 550' (Sta. 4+00 to Sta. 4+50)  
 18' in the  
 231.27'



F 59 C