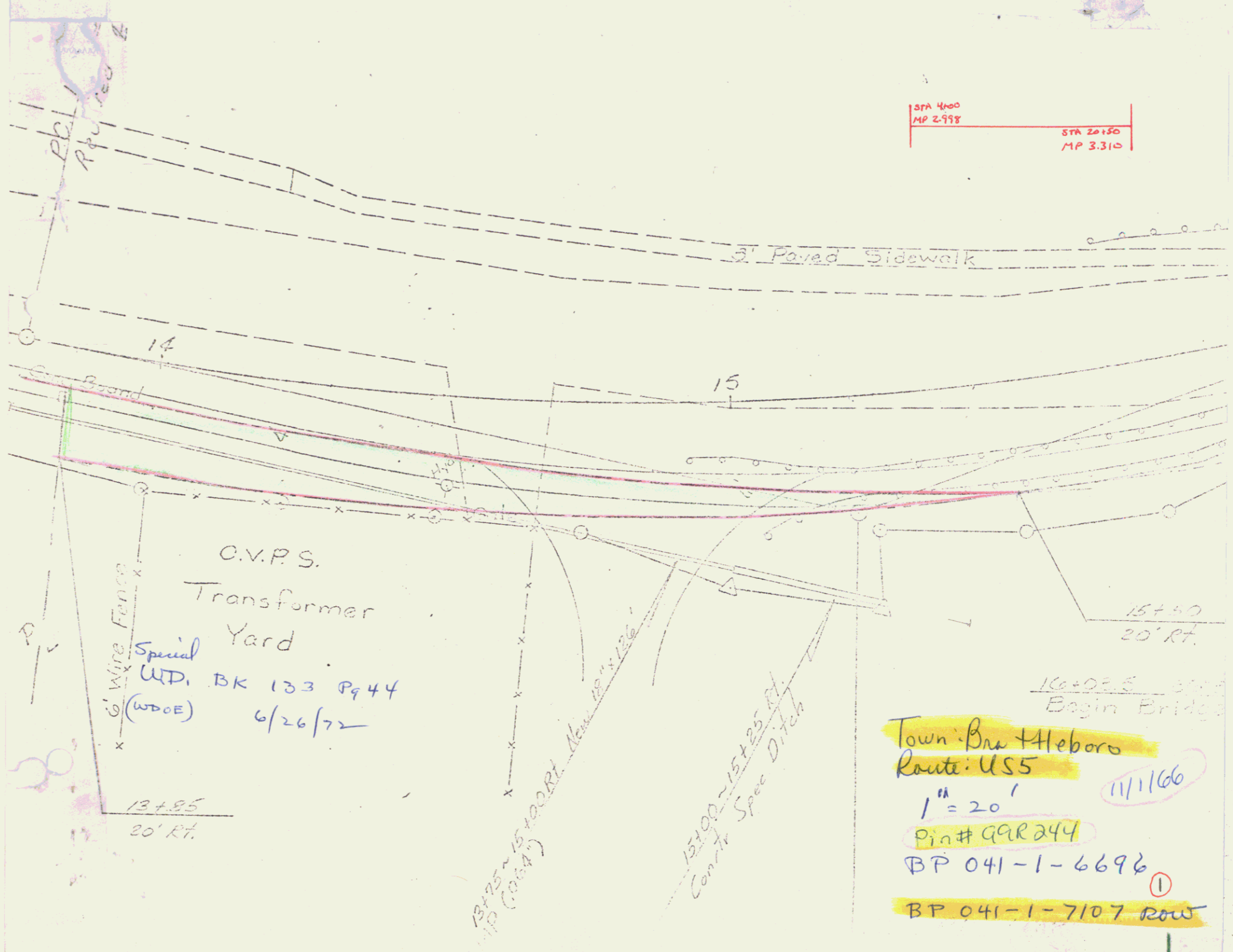
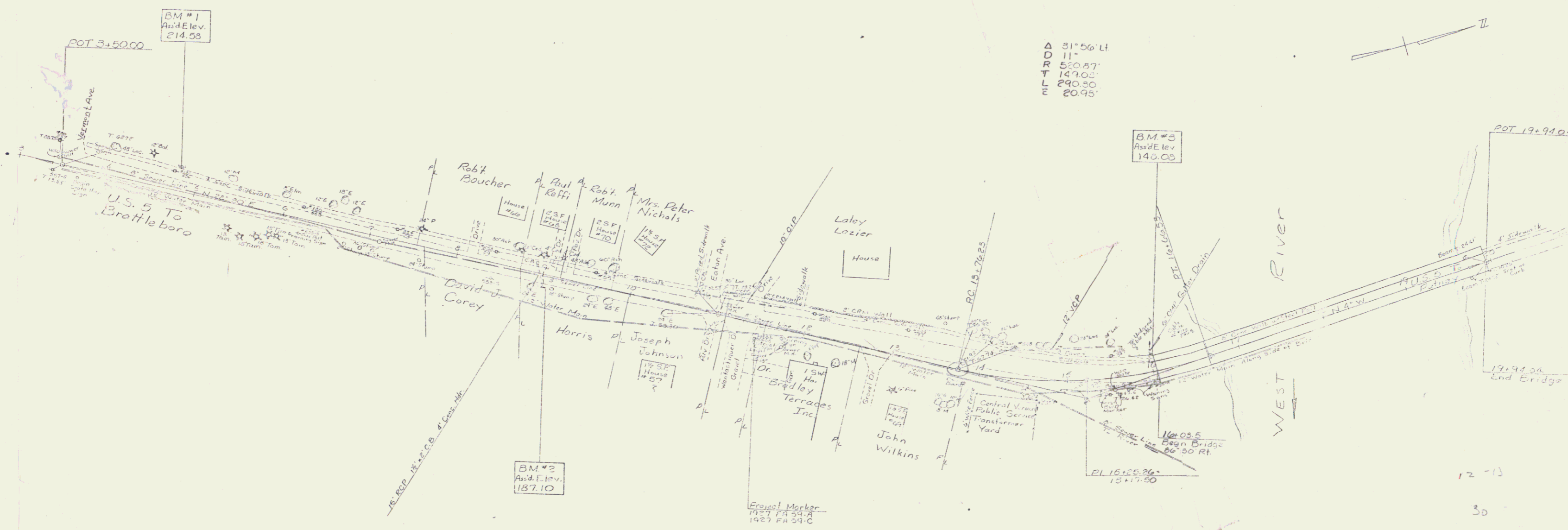


SFA 4400  
MP 2.998  
SFA 20150  
MP 3.310



Town: Bra + Heboro  
Route: US5  
11/1/66  
1" = 20'  
Pin # 99R244  
BP 041-1-6696  
BP 041-1-7107 ROW



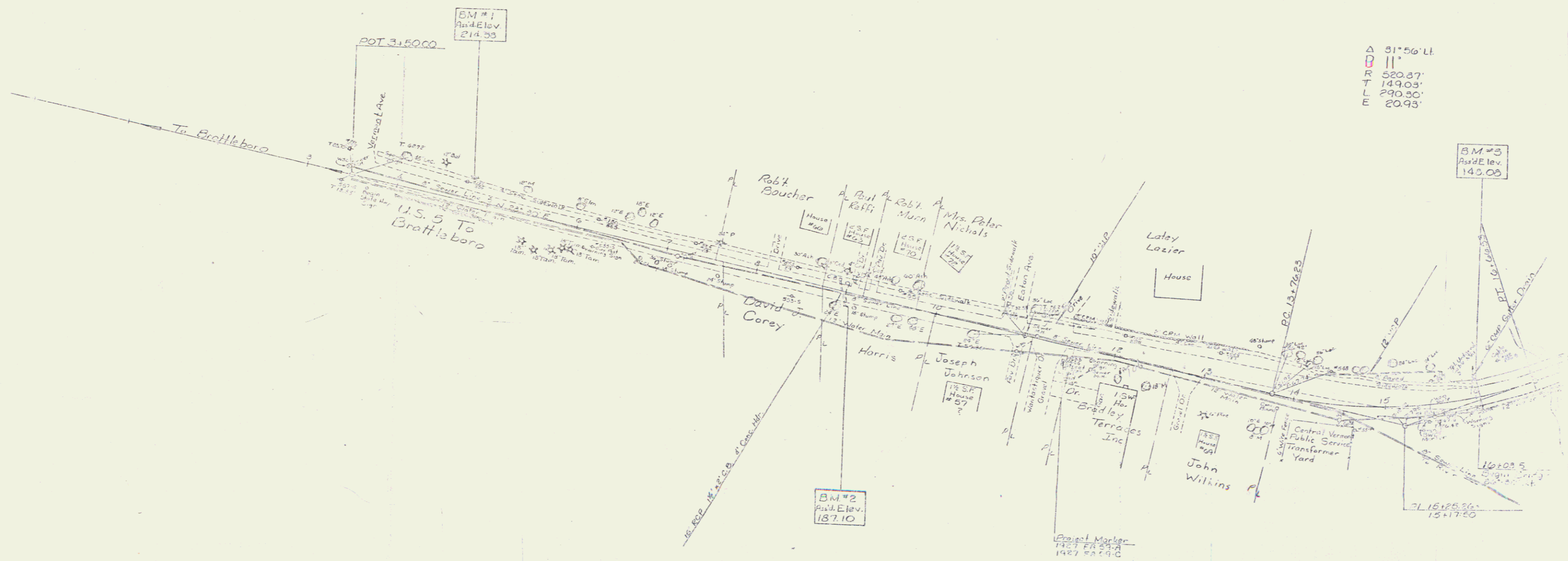
Notes: 2'-5\" paved shoulders on both edge of pavement also paved gutter between left edge of road and sidewalk.  
 3+00 Begin State Hwy.  
 3+41 begin underground telephone cable. Runs between edge of roadway and edge of sidewalk.  
 Steel truss bridge w/ 20' roadway between concrete curbs.  
 See bridge plans for data. Last repair done in 1953.  
 Sewer and water lines are taken from city of Brattleboro plans.  
 If any additional information is needed see Justin Holden, Brattleboro Water Dept.

Scale 1\"/>

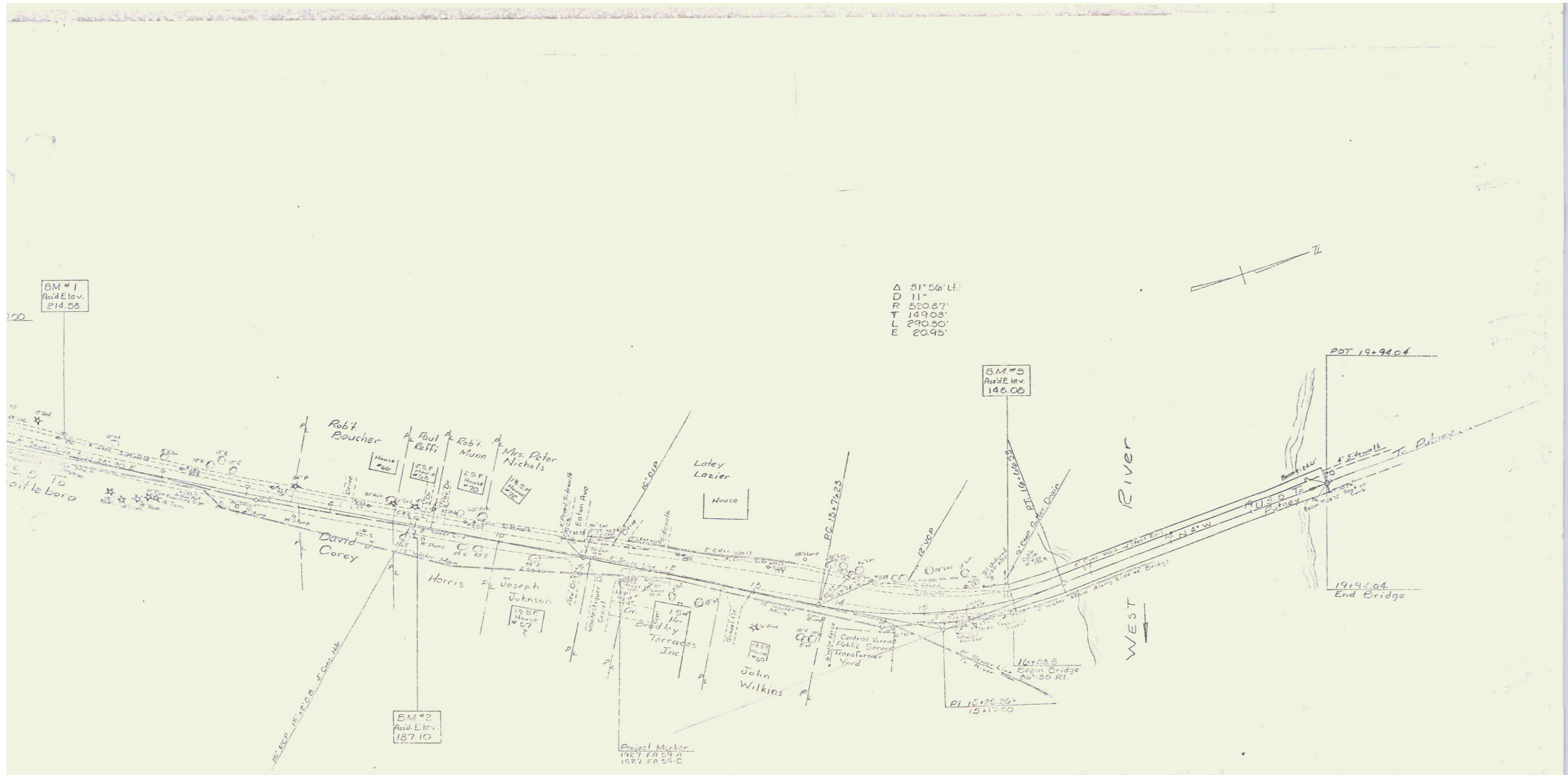
BRATTLEBORO  
 BP 041-1-6696  
 Surveyed by Smith  
 11/56

BP 041-1-7107 Row 2

2



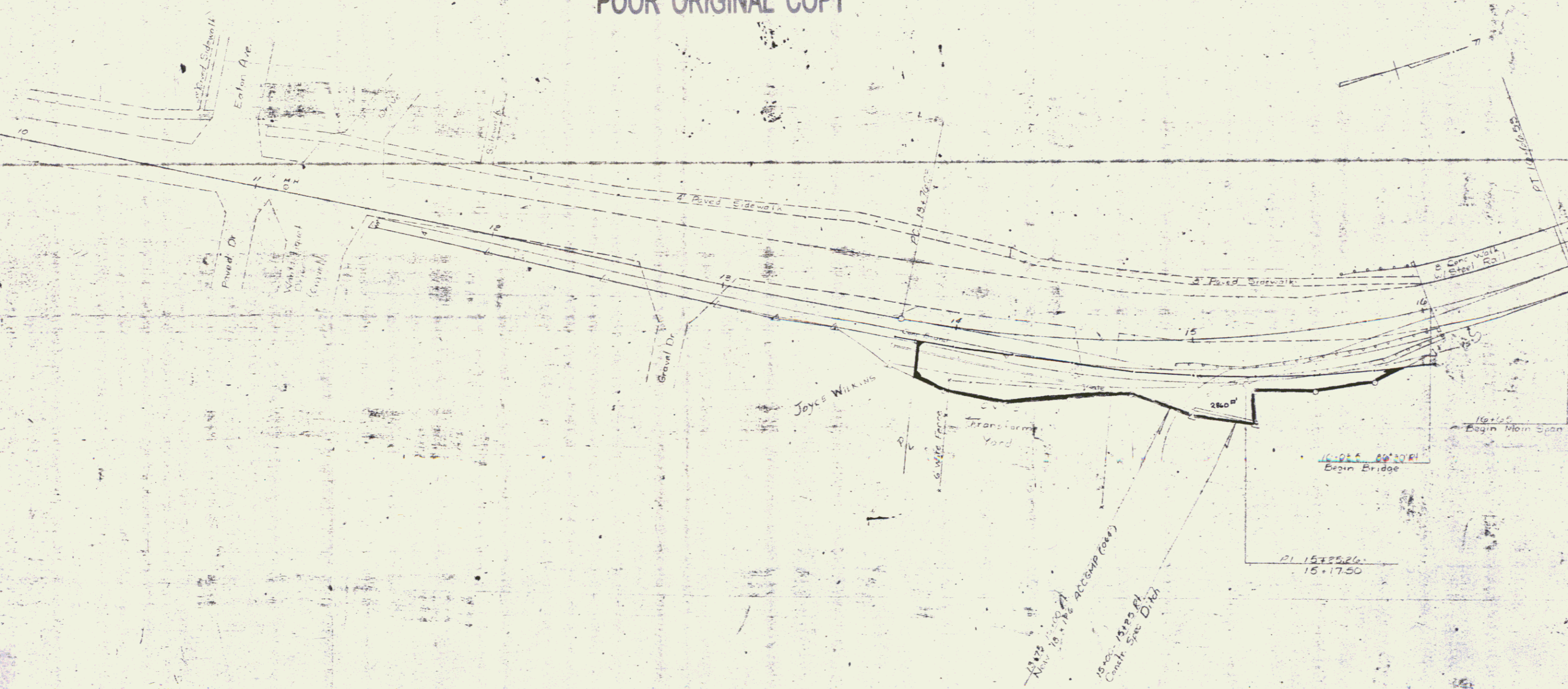
Notes: 2'-5" paved shoulders on both edge of pavement also paved gutter between left edge of road and sidewalk.  
 3+60 Begin State Hwy.  
 3+41 begin underground telephone cable. Runs between edge of roadway and edge of sidewalk.  
 Steel truss bridge w/100' roadway between concrete curbs.  
 See bridge plans for data. Last repair done in 1953.  
 Sewer and water lines are taken from city of Brattleboro.  
 If any additional information is needed see Justin Nelson, Brattleboro Water Dept.



Notes:  
 2'-5" paved shoulders on both edge of pavement  
 also paved gutter between left edge of road and sidewalk.  
 3+66 Begin State Hwy.  
 3+41 begin underground telephone cable Runs between  
 edge of roadway and edge of sidewalk.  
 Slab truss bridge w/20' road way between concrete curbs.  
 See bridge plans for data Last repair done in 1955.  
 Sewer and water lines are taken from city of Brattleboro plans.  
 If any additional information is needed see  
 Justin Holden, Brattleboro Water Dept.

Scale 1"=50'  
 BRATTLEBORO  
 BP 04116696  
 Surveyed by Smith  
 1966

POOR ORIGINAL COPY



FRATIERE  
PR 041-17107  
Scale 1"=100'

5

5