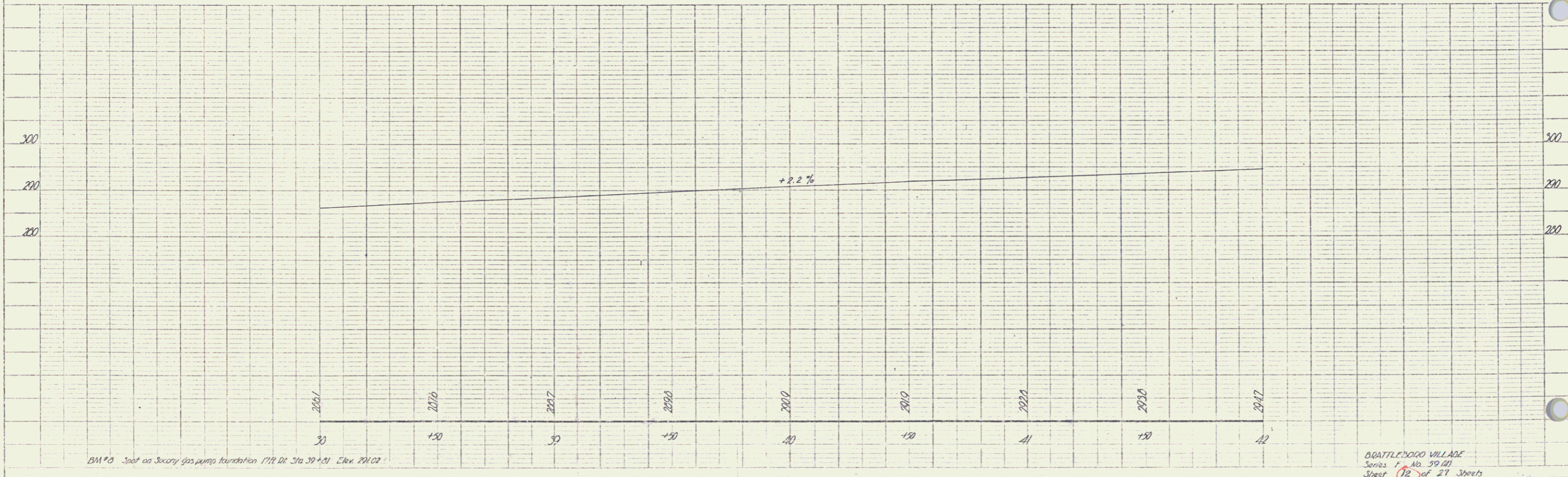
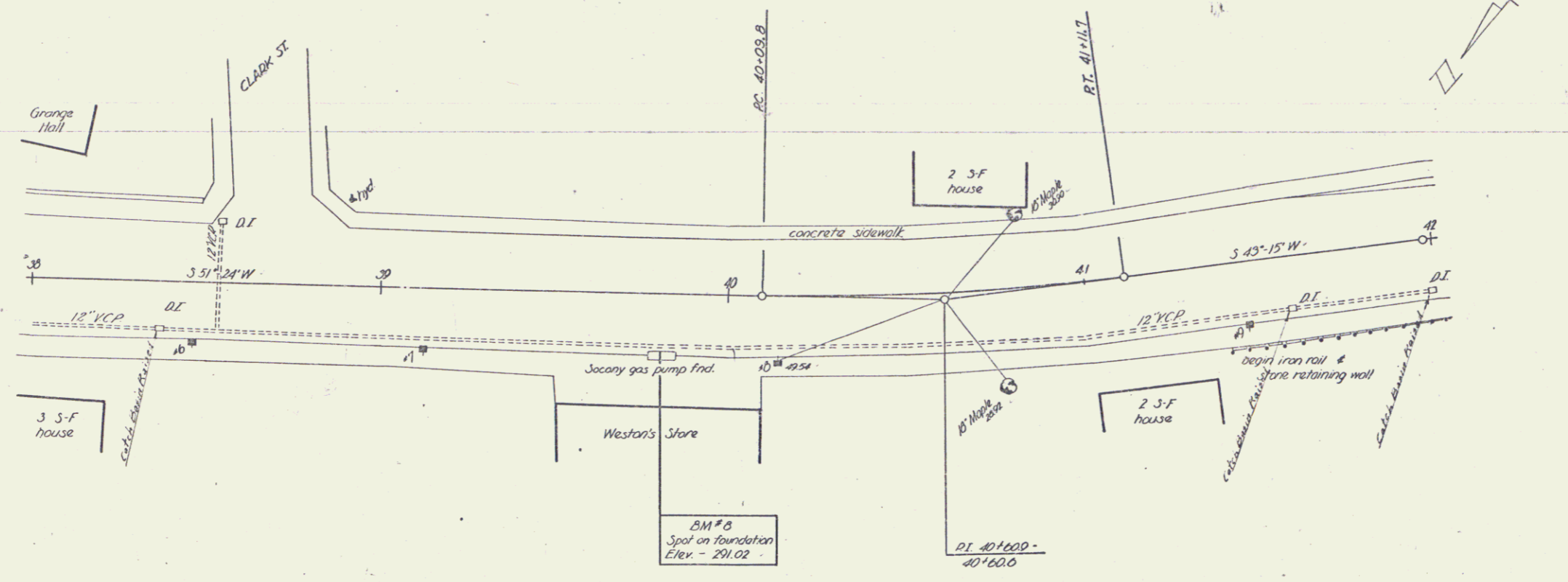


Δ 8°00' LI
 D 4°
 R 716.0
 T 34.1
 L 101.9
 E 1.8

| PLAN | DATE | BY | CHKD |
|---------------|------|----|------|
| Prop. Highway | 4/18 | AB | AB |
| Asst. Highway | 4/18 | AB | AB |
| Asst. Highway | 4/18 | AB | AB |
| Asst. Highway | 4/18 | AB | AB |

| PROJ. | DATE | BY | CHKD |
|---------------|------|----|------|
| Prop. Highway | 4/18 | AB | AB |
| Asst. Highway | 4/18 | AB | AB |
| Asst. Highway | 4/18 | AB | AB |
| Asst. Highway | 4/18 | AB | AB |



BM # B Spot on Socary gas pump foundation IPR D1 Sta 39+21 Elev. 291.02