

INDEX OF SHEETS

SHEET NO. 1	TITLE PAGE
2	TYPICAL CROSS-SECTION OF IMPROVEMENT--2 1/2" BITUMINOUS CONCRETE PAVEMENT, ITEM 361 B
3	QUANTITY SHEET-ITEMS
4	QUANTITY SHEET-DRAINAGE
5	EARTHWORK SHEET
6-16	PLAN AND PROFILE
17	STANDARD STRUCTURE SHEET S-28 PIPE CULVERTS
18	" " " " S-30A STANDARD UNDERDRAIN
19	" " " " S-40 BARRICADES, SIGNS AND LIGHTS
20-27	CROSS SECTIONS

STATE OF VERMONT
STATE HIGHWAY DEPARTMENT

PLAN AND PROFILE OF PROPOSED
STATE HIGHWAY

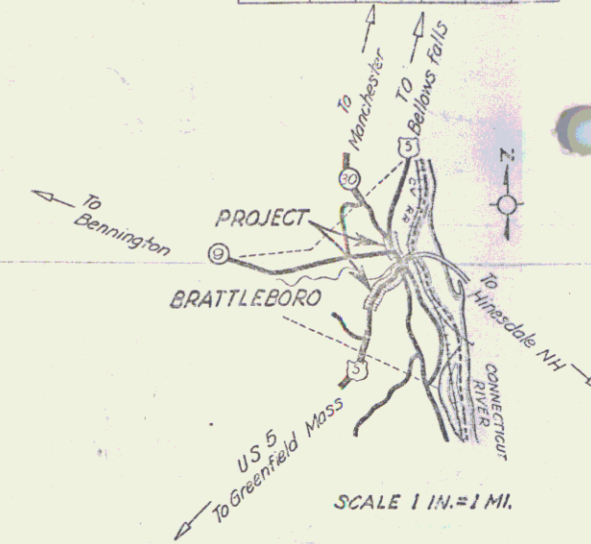
VILLAGE OF BRATTLEBORO
ROUTE U.S. 5
MAIN STREET

BEGINNING AT THE INTERSECTION OF ROUTE U.S. 5 AND VERMONT ROUTE 30 AND EXTENDING SOUTHERLY 5150.0 FEET. (EXCLUDING 571.0 FEET)
LENGTH OF PROJECT: 4579.0 FT.=0.867 MILES

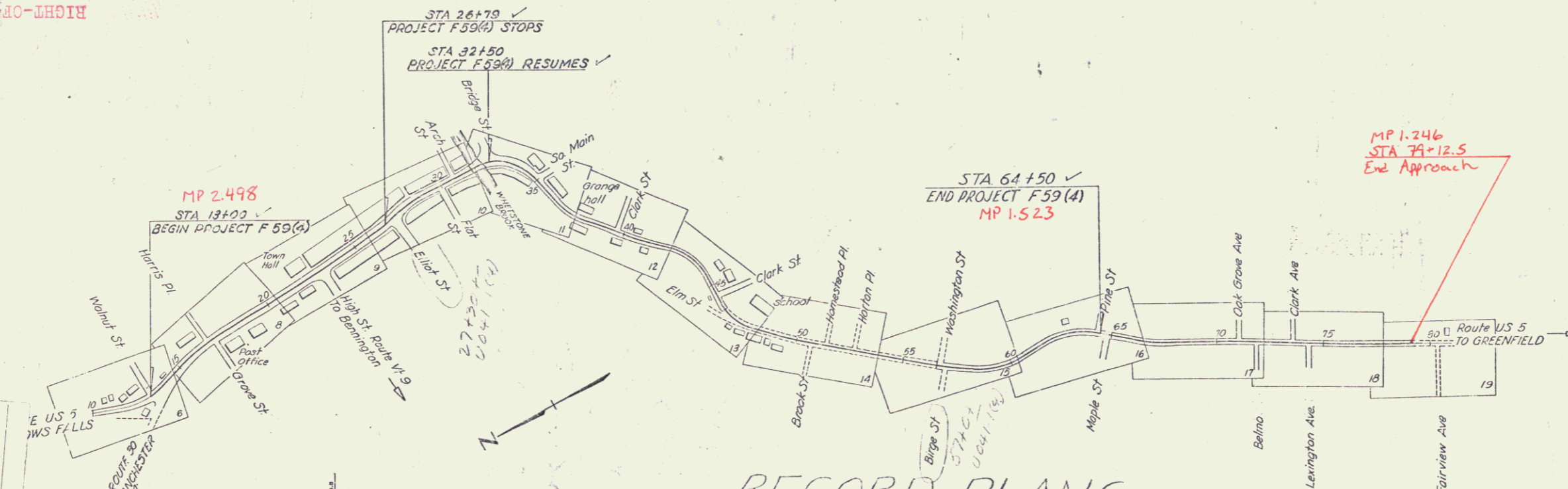
STANDARD STRUCTURE SHEETS APPROVED BY THE CHIEF ENGINEER
VERMONT STATE DEPT. OF HIGHWAYS
S-28 APRIL 26, 1941
S-30A APRIL 19, 1941
S-40 DEC. 18, 1945

POST WAR F A PRIMARY

FED. ROAD DIST. NO.	STATE	FISCAL YEAR	SHEET NO.	TOTAL SHEETS
9	Vt.	59(4)	1	27



(To Be Returned To R.O.W. Division)
Town of U.S.
PERMIT
TOWN FILE
HIGHWAY DIVISION



PROJECT	Brattleboro
DESIGNED BY	F. L. Dudley
TYPE	U.S. 5, B.T. Co., National
CONTRACTOR	Coxs with Const. Co.
LOCATION	Sec. 4/7
DATE	June 1949

RECORD PLANS
Contractor - Coss Valley Const. Co.
Contract completed June 17, 1949

GROUND ELEVATION	DATUM	LINE
GRADE ELEVATION	DATUM	LINE

CURVE DATA

DEFLECTION ANGLE	Δ
DEGREE OF CURVE	D
RADIUS OF CURVE	R
TANGENT DISTANCE	T
LENGTH OF CURVE	L
EXTERNAL DISTANCE	E
POINT OF INTERSECTION	P. I.
POINT OF CURVE	P. C.
POINT OF TANGENT	P. T.
POINT ON TANGENT	P. O. T.

SCALES

TITLE	1" = 300'
TYPICAL	1" = 2'
PLAN	1" = 20'
PROFILE HORIZONTAL	1" = 20'
PROFILE VERTICAL	1" = 10'
CROSS SECTIONS	1" = 5'

RECORD PLANS
Resident Engineer - F. L. Dudley
Prepared Under the Direction of
F. L. Dudley by M. L. Bliss
June 1949

THESE PLANS ARE SUBJECT TO SUCH REVISIONS AS MAY BE REQUIRED BY THE PUBLIC ROADS ADMINISTRATION OR THE COMMISSIONER OF HIGHWAYS.
CONSTRUCTION IS TO BE CARRIED ON IN ACCORDANCE WITH THE PLANS AND THE STANDARD ROAD AND BRIDGE SPECIFICATIONS OF 1938, AS APPROVED DECEMBER 29, 1936 BY THE PUBLIC ROADS ADMINISTRATION, INCLUDING ALL SUBSEQUENT APPROVED REVISIONS AND SUCH REVISED SPECIFICATIONS AND SPECIAL PROVISIONS AS ARE SUBMITTED WITH THE PLANS.

APPROVED: 6 JULY 49
H. B. Sargent
COMMISSIONER OF HIGHWAYS
SUBMITTED BY ORDER OF THE STATE HIGHWAY BOARD

APPROVED: 7 JULY 49
H. B. Sargent
DISTRICT HIGHWAY COMMISSIONER
SERIES F No. 59(4) FILED
SHEET 1 OF 27

STEARNS R. JENKINS
US 5