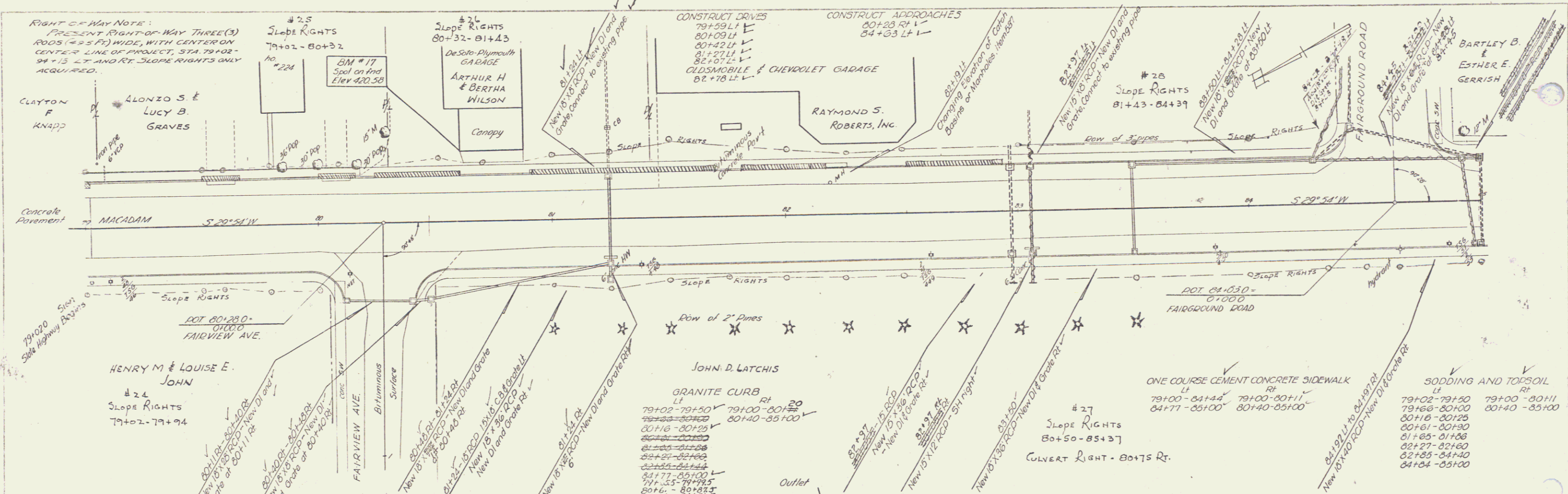
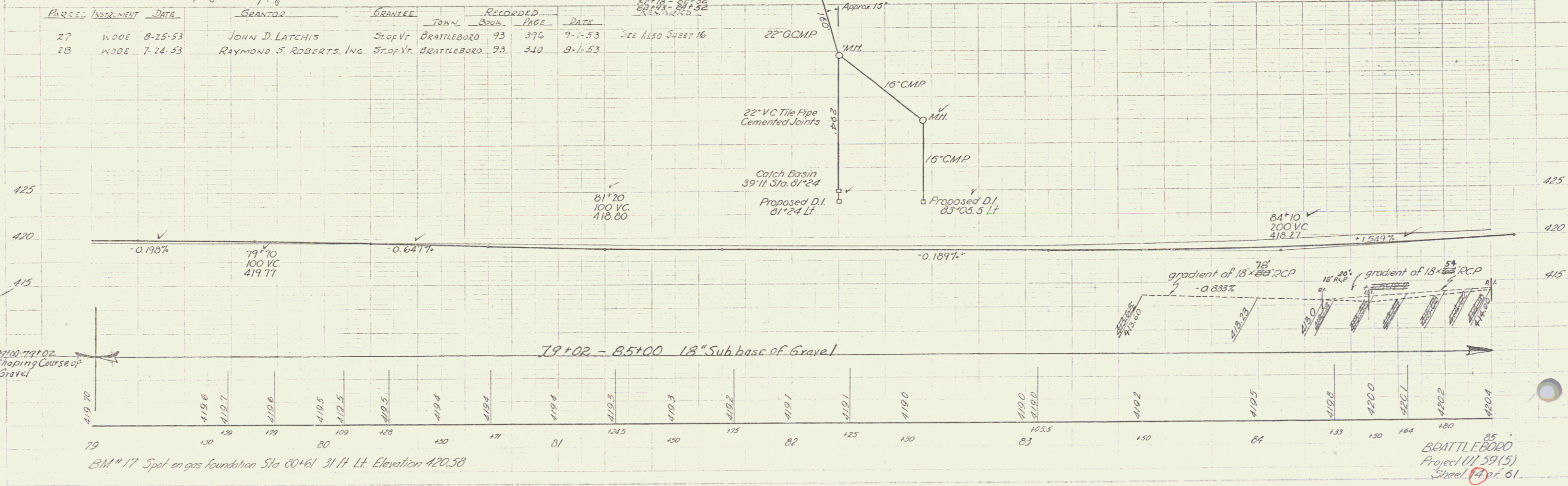


RIGHT OF WAY NOTE:
PRESENT RIGHT OF WAY THREE (3)
RODS (4.5 FT) WIDE, WITH CENTER ON
CENTER LINE OF PROJECT, STA. 79+02-
94+13 LT AND RT. SLOPE RIGHTS ONLY
ACQUIRED.



PARCEL	INSTRUMENT	DATE	GRANTOR	GRANTEE	TOWN	BOOK	PAGE	DATE
27	N30E	8-25-53	JOHN D. LATCHIS	Stop Vt	BRATTLEBORO	93	376	9-1-53
28	N30E	7-24-53	RAYMOND S. ROBERTS, INC.	Stop Vt	BRATTLEBORO	93	340	8-1-53

See also Subst 16



B.M. # 17 Spot on gas foundation Sta 80+61 31 ft Lt. Elevation 420.58

BRATTLEBORO
Project 111 59(5)
Sheet 14 of 61