

POOR ORIGINAL COPY

REMOVAL AND DISPOSAL OF PREVIOUS
GUARD RAIL, ITEM 549
445+00 - 445+95 2'
446+00 - 446+50 2'
446+50 - 447+00 2'
447+00 - 447+95 2'
448+00 - 448+25 2'

VERTICAL GRANITE CURB, ITEM 556-B
445+00 - 446+36 2'

CONSTRUCT DRIVE
445+50 LT

BITUMINOUS CONCRETE
SIDEWALK, ITEM 562
445+00 - 446+36 2'

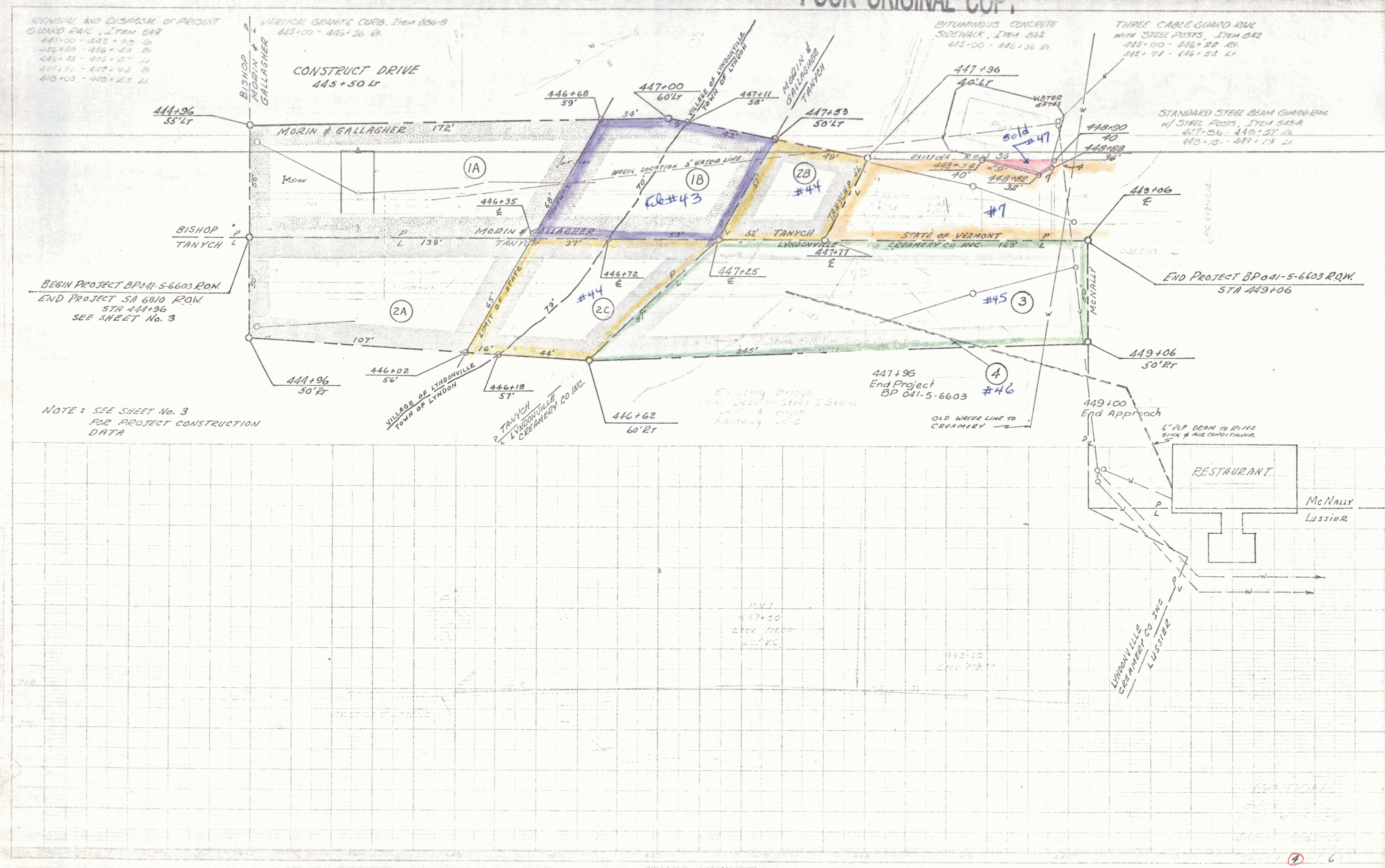
THREE CABLE GUARD RAIL
WITH STEEL POSTS, ITEM 542
445+00 - 446+22 2'
445+71 - 446+51 2'

STANDARD STEEL BEAM GUARD RAIL
W/ STEEL POSTS, ITEM 545-A
447+00 - 448+50 2'
448+50 - 449+10 2'

BEGIN PROJECT BP 041-5-6603 R.O.W.
END PROJECT SA 6810 R.O.W.
STA 444+96
SEE SHEET No. 3

END PROJECT BP 041-5-6603 R.O.W.
STA 449+06

NOTE: SEE SHEET No. 3
FOR PROJECT CONSTRUCTION
DATA



PLAN

PROFILE