

INDEX OF SHEETS

- 1. Title Sheet
- 2-3. Re-5 Reloc. Typical Sections
- 4. Detour Road Typical Sections
- 5-5a. Quantity Sheets
- 6. Drainage Sheet
- 7. Earthwork and Grade Sheet
- 8. Earthwork Summary Sheet
- 9-12. ROW Detail Sheets
- 13-16. Plan and Profile Sheets
- 17-19. Traffic Sign Sheets
- 20-23. Utilities Sheets (Reloc. of Water System)
- 24. And Typical for Slopes in Solid Rock Excav.
- 25. B-1 Banking Tables
- 26. B-5 Typical Slope Grading
- 27. B-6 Muck Excavation
- 28. B-10 Embankment on a Slope
- 29. B-11 Use of Underdrain w/ Shattered Rock Sub-grade
- 30. C-1 Curbs
- 31. C-2a Sidewalks
- 32. C-2b Sidewalks
- 33. D-2 Cement Rubble Masonry
- 34. D-3 Treated Gutters
- 35. D-4 Pipe Elbow
- 35. D-16 Drop Inlet, Type II
- 37. Blank
- 38. E-11 Interstate Route Markers
- 39. E-14 Regulatory Signs
- 40. E-15 Regulatory Signs
- 41. E-16 Warning Signs
- 42. E-26 Standard Sign Placement
- 43. E-31 Fed. Aid Construction Identification Signs
- 44. G-4 Marker Posts
- 45. G-9 Bridge Railing
- 46. J-1 Project Markers
- 47-50. Blank
- BRIDGE SHEETS RTE 5 RELOC. OVER PASSADUMCIC RIVER (including Channel Sections)
- 51. Plan and Elevation Sheet
- 52. Quantity Sheet
- 53. Preliminary Information
- 54-56. Boring Layout
- 57. Superstructure Plans and Details
- 58. Framing Plans and Typical Sections - Alternate A
- 59-59a. Steel Details - Alternates A and B
- 60. Abutment #1 Plan and Elevation
- 61. Abutment #1 Wingwall Details
- 62. Abutment #2 Plan and Elevation
- 63. Abutment #2 Wingwall Details
- 64. Pier #1
- 65. Approach Slab #1 and #2 Details
- 66. Railing Spindle Details
- 67-68. Reinforcing Schedule
- 69-73. Sections
- BRIDGE STANDARDS
- 74. SCD-01-67 General Notes
- 75. SCD-02-67 Detail C
- 76. SCD-03-67 Detail A and B
- 77. SCD-04-67 Cover Plate Details
- 78. SCD-05-67 Details A and B
- 79. SCD-06-67 Detail A and B

80. SB-P1-68 Sheets 1 & 2 Alon. Br. Rail. Details 4/28/70 R
 81. SB-P1-68 Cast-in-Place Concrete Piling 11/9/68
 82-85. Blank
 86-95. Cross sections (Mainline)

LYNDON F 041-5(9)
RECORD PLANS PAVEMENT AREA
MATERIALS 5,944 S.Y.

STATE OF VERMONT
 DEPARTMENT OF HIGHWAYS



PROPOSED IMPROVEMENT
TOWN OF LYNDON
COUNTY OF CALEDONIA
US RTE. 5

Pin # 99R 236

LENGTH OF ROADWAY 1077.92 FEET 0.204 MILES
 LENGTH OF BRIDGE 172.08 FEET 0.033 MILES
 LENGTH OF PROJECT 1250.00 FEET 0.237 MILES
 BEGINNING AT A POINT 0.165 MILES SOUTHERLY OF
 THE INTERSECTION OF EXISTING US RTE. 5
 AND THE CANADIAN PACIFIC RAILROAD
 AND EXTENDING NORTHERLY
 0.737 MILES.

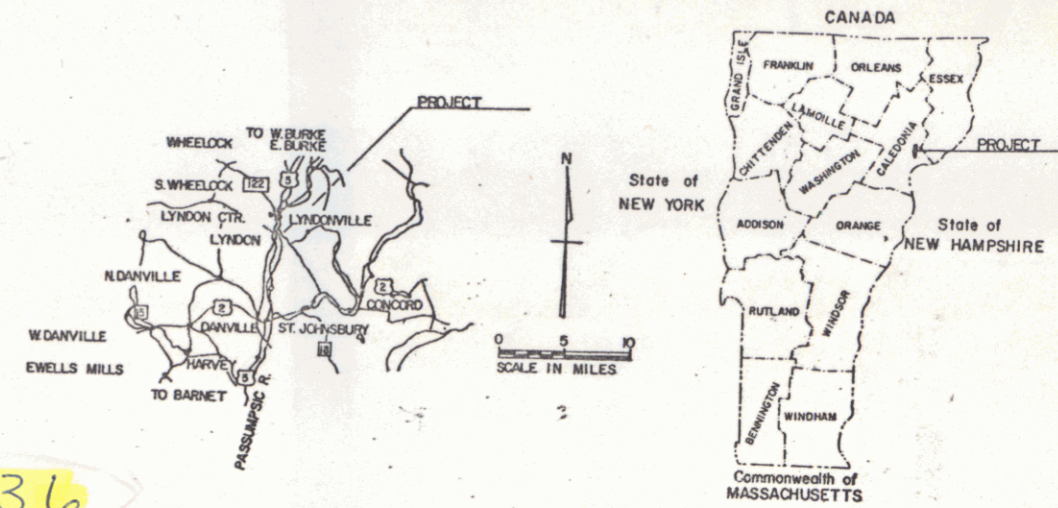
170 FPM 950
 195 D 16.5%
 1990 R 1.5%
 7 MPH

- SUBBASE OF GRAVEL - STONE PIT - W. BURKE, VT.
- PLANT MIXED BASE COURSE & BITUMINOUS CONCRETE PAVEMENT - L.M. PIKE & SON - WATERFORD, VT.
- GRAVEL BACKFILL - DROWN PIT - LYNDON, VT.
- ASPHALT FOR TACK - MOBIL OIL CO. - ALBANY, N.Y.
- GRITS - WATERLOO MARBLE, LTD. - WATERLOO, QUE.
- TAR EMULSION & JOINT SEALER - HOT POURED - VERMONT SEAL COATING - BARRE, VT.
- POLYURETHANE JOINT SEALER - KIBBY EQUIPMENT CO. - WHITE RIVER JUNCTION, VT.
- CONCRETE CLASS AA & B - CALKINS READY MIX - LYNDON, VT.
- REINFORCING STEEL - K ROSS BUILDING SUPPLY CENTER, INC. - LEBANON, N.H.
- SHEAR CONNECTORS - NELSON STUD WELDING CO. - MANCHESTER, N.H.
- STEEL SUPERSTRUCTURE - S.S.S. INDUSTRIES, INC. - ST. LEONARD, MONTREAL, QUE.
- DROP INLET, TYPE II - CALCO, INC. - WATERFORD, VT.
- BRIDGE RAILING - AMERICAN BRIDGE RAILING CORP. - LYNN, MA.
- BRIDGE PAINT - BURGESS-FOBES PAINT CO. - PORTLAND, ME.
- AMSTFRAM COLOR WORKS - NEW YORK, N.Y.
- METAL CULVERT PIPE - NORTHEASTERN CULVERT CO. - WESTMINSTER, VT.
- TRAFFIC SIGNS & VERTICAL GRANITE CURB - GRISWOLD FENCE, CO. - WILLISTON, VT.
- SHELLS & SHOES FOR CAST IN PLACE CONCRETE PILING - DAVIDSON PIPE SUPPLY CO., INC. - BROOKLYN, N.Y.
- GRANITE BRIDGE CURB - BARRETTO GRANITE CO. - MILFORD, N.H.

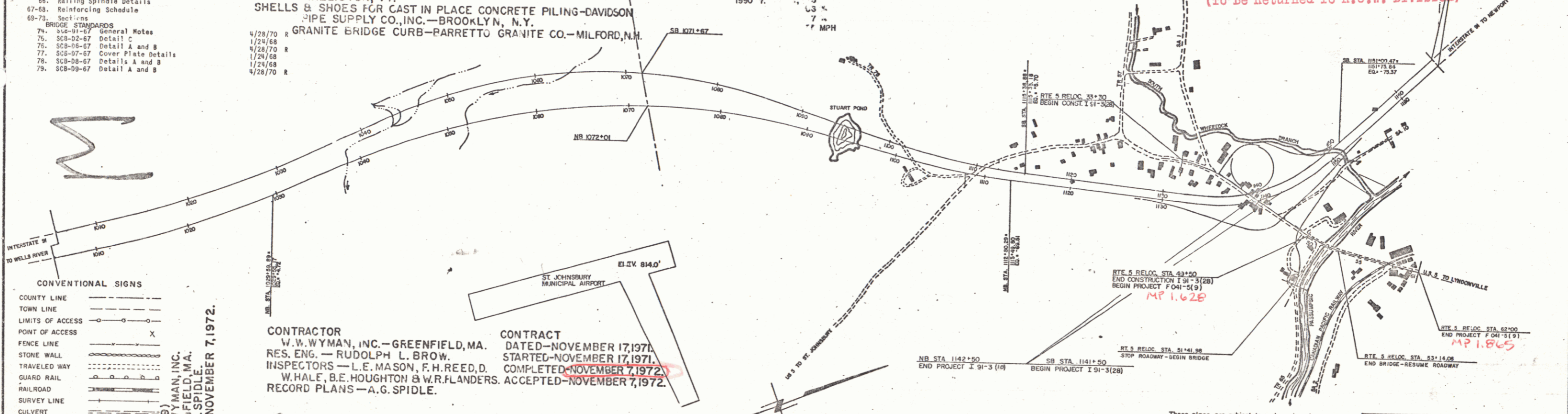
CONTRACTOR
 W.W. WYMAN, INC. - GREENFIELD, MA.
 RES. ENG. - RUDOLPH L. BROW.
 INSPECTORS - L.E. MASON, F.H. REED, D.
 W. HALE, B.E. HOUGHTON & W.R. FLANDERS. ACCEPTED - NOVEMBER 7, 1972.
 RECORD PLANS - A.G. SPIDLE.

CONTRACT
 DATED - NOVEMBER 17, 1971.
 STARTED - NOVEMBER 17, 1971.
 COMPLETED - NOVEMBER 7, 1972.

- CONVENTIONAL SIGNS
- COUNTY LINE
 - TOWN LINE
 - LIMITS OF ACCESS
 - POINT OF ACCESS
 - FENCE LINE
 - STONE WALL
 - TRAVELED WAY
 - GUARD RAIL
 - RAILROAD
 - SURVEY LINE
 - CULVERT
 - POWER POLE
 - TELEPHONE POLE
 - TREES
 - F.A. CONST. IDENTIFICATION SIGNS
 - PROPERTY LINE
 - ROW TAKING LINE
 - SLOPE RIGHTS
 - TOP OF CUT
 - TOE OF SLOPE
- LYNDON F 041-5(9)
 CONTRACTOR W.W. WYMAN, INC.
 GREENFIELD, MA.
 RECORD PLANS - A.G. SPIDLE.
 CONST. COMPLETED - NOVEMBER 7, 1972.



RIGHT-OF-WAY DIVISION
 TOWN FILE
 PERPETUAL
 Town of US5
 (To Be Returned To R.O.W. Division)



NOTE: ANY FURTHER INFORMATION CONCERNING FINAL QUANTITIES, AMOUNTS OR OTHER DETAILS RELATIVE TO THIS PROJECT MAY BE FOUND IN EITHER THE FIELD BOOKS OR THE ESTIMATE FILE.

These plans are subject to such engineering changes as may be required by the Federal Highway Administration or the Chief Engineer. Construction is to be carried on in accordance with these plans and the Standard Specifications for Highway and Bridge Construction dated April 1964, as approved by the Bureau of Public Roads on October 12, 1964, including all subsequent approved revisions and such revised specifications and special provisions as are incorporated in these plans.

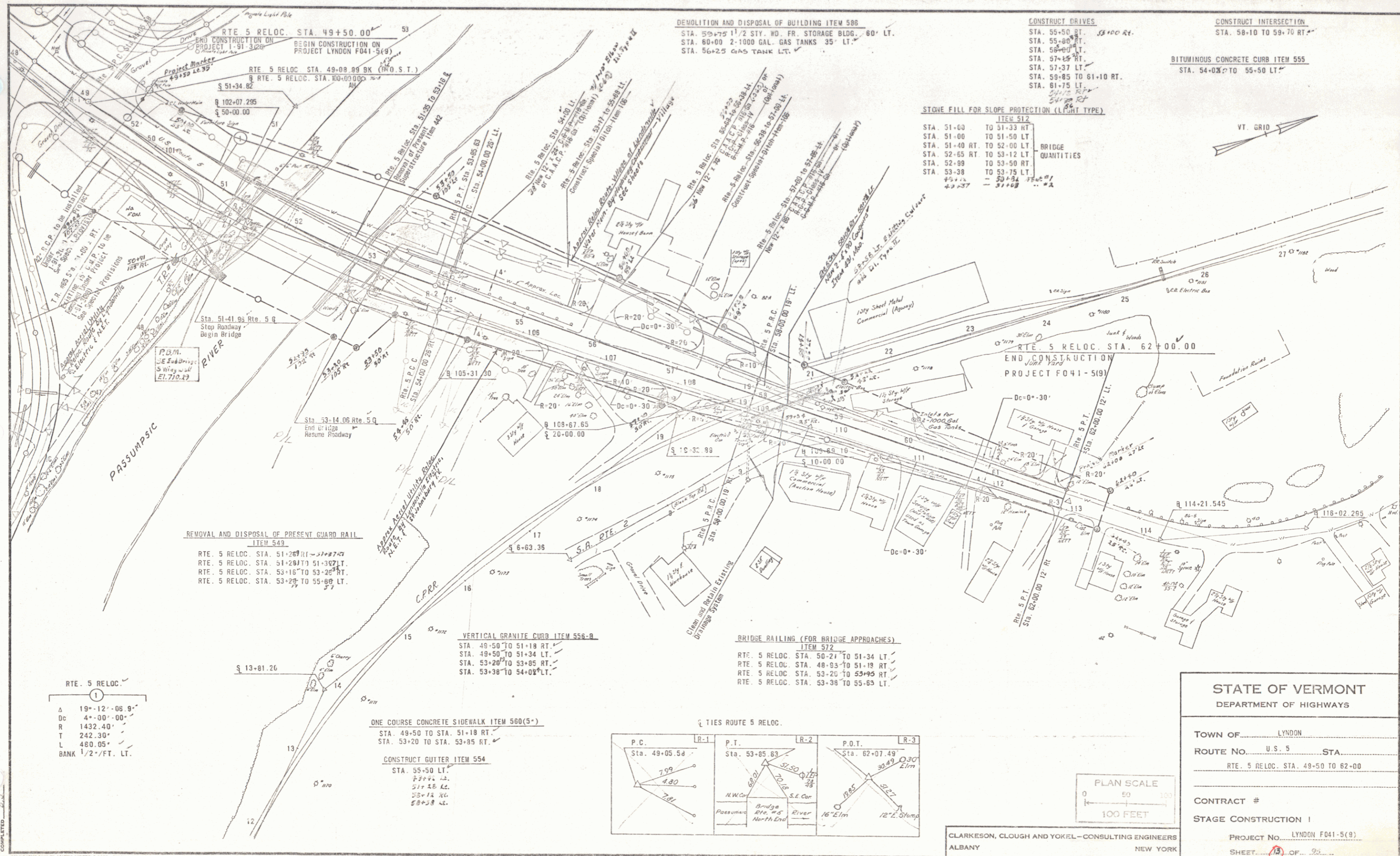
SUBMITTED BY ORDER OF THE STATE HIGHWAY BOARD

APPROVED: *[Signature]* DATE 7/29/71
 CHIEF ENGINEER

DEPARTMENT OF TRANSPORTATION
 FEDERAL HIGHWAY ADMINISTRATION

APPROVED: _____ DATE _____
 DIVISION ENGINEER

PROJECT F # 041-5(9)
 SHEET 2 OF 95 SHEETS



DEMOLITION AND DISPOSAL OF BUILDING ITEM 586
 STA. 59+75 1 1/2 STY. WD. FR. STORAGE BLDG. 60' LT.
 STA. 60+00 2-1000 GAL. GAS TANKS 35' LT.
 STA. 56+25 GAS TANK LT.

CONSTRUCT DRIVES
 STA. 55-50 RT. 13+00 RT.
 STA. 55-60 RT.
 STA. 56-00 RT.
 STA. 57-15 RT.
 STA. 59-85 TO 61-10 RT.
 STA. 61-75 LT.

CONSTRUCT INTERSECTION
 STA. 58-10 TO 59-70 RT.

BITUMINOUS CONCRETE CURB ITEM 555
 STA. 54-00 TO 55-50 LT.

STONE FILL FOR SLOPE PROTECTION (LIGHT TYPE)

STA.	ITEM 512
51-00	TO 51-33 RT.
51-00	TO 51-50 LT.
51-40 RT.	TO 52-00 LT.
52-65 RT.	TO 53-12 LT.
52-99	TO 53-50 RT.
53-38	TO 53-75 LT.
53+38	53+38
53+38	53+38

BRIDGE QUANTITIES

REMOVAL AND DISPOSAL OF PRESENT GUARD RAIL ITEM 549
 RTE. 5 RELOC. STA. 51-20 RT. TO 51-27 RT.
 RTE. 5 RELOC. STA. 51-20 RT. TO 51-30 RT.
 RTE. 5 RELOC. STA. 53-16 TO 53-26 RT.
 RTE. 5 RELOC. STA. 53-28 TO 55-60 RT.

VERTICAL GRANITE CURB ITEM 558-B
 STA. 49-50 TO 51-18 RT.
 STA. 49-50 TO 51-34 LT.
 STA. 53-20 TO 53-85 RT.
 STA. 53-38 TO 54-00 LT.

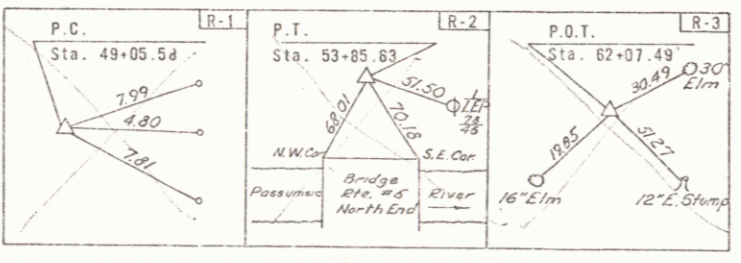
BRIDGE RAILING (FOR BRIDGE APPROACHES)
 ITEM 512
 RTE. 5 RELOC. STA. 50-21 TO 51-34 LT.
 RTE. 5 RELOC. STA. 48-93 TO 51-19 RT.
 RTE. 5 RELOC. STA. 53-20 TO 53+99 RT.
 RTE. 5 RELOC. STA. 53-38 TO 55-63 LT.

RTE. 5 RELOC.

A	19'-12"-08.8"
Dc	4'-00"-00"
R	1432.40'
L	242.30'
T	480.05'
BANK	1/2'-FT. LT.

ONE COURSE CONCRETE SIDEWALK ITEM 560(5*)
 STA. 49-50 TO STA. 51-18 RT.
 STA. 53+20 TO STA. 53-85 RT.

CONSTRUCT GUTTER ITEM 554
 STA. 55-50 LT.
 2" x 2" x 2"
 5" x 12" x 6"
 5" x 3" x 6"



STATE OF VERMONT
 DEPARTMENT OF HIGHWAYS

TOWN OF LYNDON

ROUTE No. U.S. 5 STA. _____

RTE. 5 RELOC. STA. 49-50 TO 62-00

CONTRACT # _____

STAGE CONSTRUCTION I

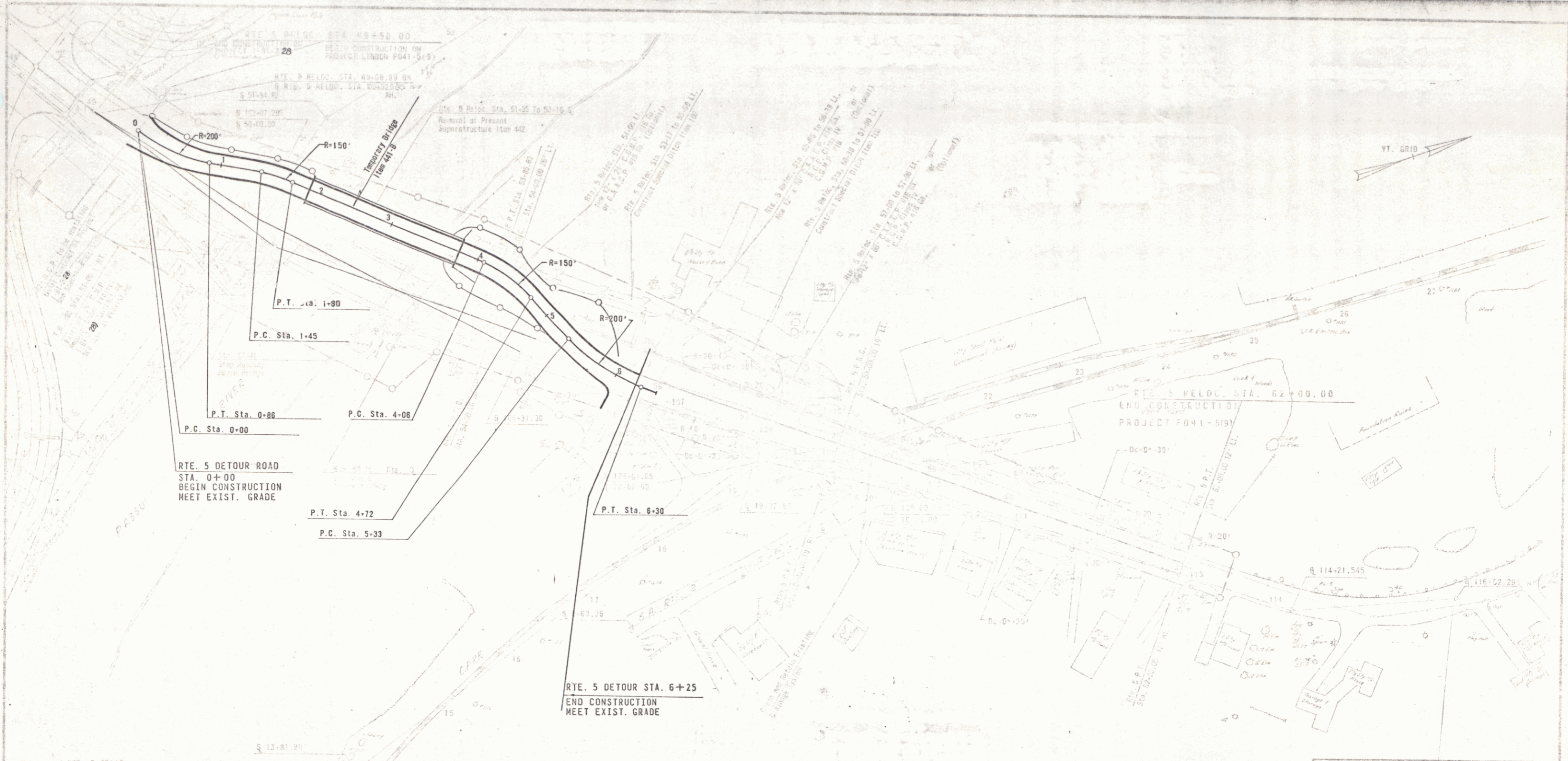
PROJECT No. LYNDON F041-5(8)

SHEET 13 OF 25

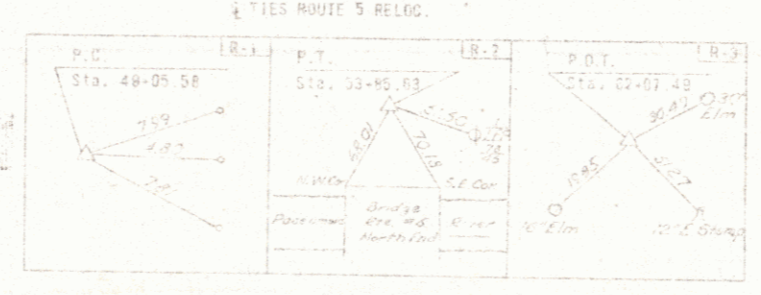
CLARKESON, CLOUGH AND YOKEL—CONSULTING ENGINEERS
 ALBANY NEW YORK

APPROVED FOR CONSTRUCTION BY
 DRAWN BY
 CHECKED BY
 DATE
 COMPLETE

POOR ORIGINAL COPY



RTE. 5 RELOC
 A 18°-12'-00.9"
 Dc 4'-66'-00"
 R 1432.40'
 T 742.39'
 L 480.05'
 BANK 1/2' FT. LT



PLAN SCALE
 1" = 100 FEET

CLARKESON, CLOUGH AND YOKEL - CONSULTING ENGINEERS
 ALBANY NEW YORK

STATE OF VERMONT	
DEPARTMENT OF HIGHWAYS	
TOWN OF	LYNDEN
ROUTE NO.	U.S. 5 STA
	RTE. 5 RELOC. DETOUR ROAD
CONTRACT #	
STAGE CONSTRUCTION I	
PROJECT NO.	LYNDEN F041-5(3)
SHEET	15 OF 95