

DEWEY 129

FED. ROAD DIST. NO.	STATE	W.P.G.H. PROJ. NO.	FISCAL YEAR	SHEET NO.	TOTAL SHEETS
9	Vt.	1150	1937	1	48

INDEX OF SHEETS

SHEET NO. 1	TITLE PAGE
2	TYPICAL CROSS-SECTION OF IMPROVEMENT
3	BANKING AND WIDENING TABLES
4-6	PLAN AND PROFILE (1"=50' HORIZ. 1"=20' VERT.)
7	SB NO. 20 NO. 28-29 @ 6.8° SKEW
8	DETAILS OF CAST PLATE 33 68
9	ABUTMENT NO. 1
10	PIERS NO. 1 & 2
11	ABUTMENT NO. 2
12	SB NO. 5A CABLE RAIL
13	SB NO. 20 STANDARD DETAIL NO. S 105, S108, S111, S112 & GENERAL NOTES
14	SB NO. 21 STANDARD DETAIL NO. S 114, S115, S116, S117, S118
15	SB NO. 11 BARRICADES SIGNS & LIGHTS
16	SERIES S, NO. 28 STANDARD STRUCTURES
17	29
18	30
19	31
20-48	CROSS SECTIONS

Standard Sheets 5 28 & 29 approved by the Chief Engineer on July 11th 1933
 Standard Sheet 5 30 approved by the Chief Engineer on Aug. 15th 1933
 Standard Sheet 5 31 approved by the Chief Engineer on July 25th 1934

STATE OF VERMONT
 STATE HIGHWAY DEPARTMENT

PLAN AND PROFILE OF PROPOSED
 STATE HIGHWAY

U.S. WORKS PROGRAM GRADE HIGHWAY PROJECT (W.P.G.H. 1150)

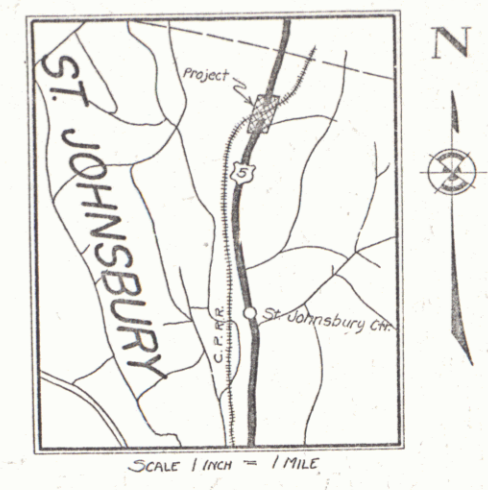
TOWN OF ST. JOHNSBURY

ST. JOHNSBURY-LYNDONVILLE ROAD

OVERPASS ON U.S. 5

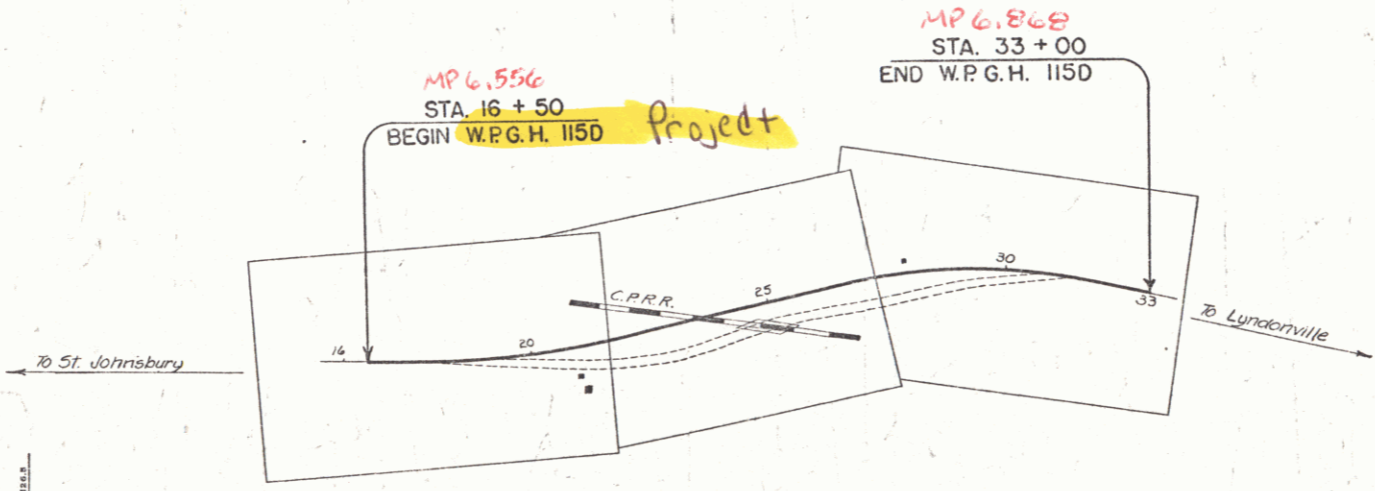
BEGINNING AT A POINT 575± FT. NORTHEAST OF THE RESIDENCE OF J. H. GREENWOOD, AND EXTENDING NORTHEASTERLY 0.312 MILES.

Pin # 992234



LENGTH OF PROJECT 1650.0 FT. = 0.312 MILES

EXAMINED AND APPROVED, NOV. 26, 1935
 CANADIAN PACIFIC RY.
 Chief Engineer



RECORD PLANS
 MARCH 5, 1937
 R.F.J.

APPROVED: Dec. 5, 1935
 H. J. Tanguay
 COMMISSIONER OF HIGHWAYS

RIGHT-OF-WAY DIVISION
 TOWN FILE

PERPETUAL
 Town of US 5
 (To Be Returned To R.O.W. Division)

CONVENTIONAL SIGNS

COUNTY LINE	GROUND ELEVATION
TOWN LINE	TENCENCE LINE
STONE WALL	UNFENCED PROPERTY
GUARD RAIL	RAILROAD
TRAVELED WAY	RETAINING WALL
RAILROAD	ENTER LINE
RAILROAD	SURVEY LINE
CULVERT	DROP INLET
DROP INLET	TROLLEY POLE
TROLLEY POLE	POWER POLE
POWER POLE	TELEPHONE POLE
TELEPHONE POLE	BRIDGE

CURVE DATA

DEFLECTION ANGLE	Δ
DEGREE OF CURVE	D
RADIUS OF CURVE	R
TANGENT DISTANCE	T
LENGTH OF CURVE	L
EXTERNAL DISTANCE	E
POINT OF INTERSECTION	P. I.
POINT OF CURVE	P. C.
POINT OF TANGENT	P. T.
POINT ON TANGENT	P. O. T.

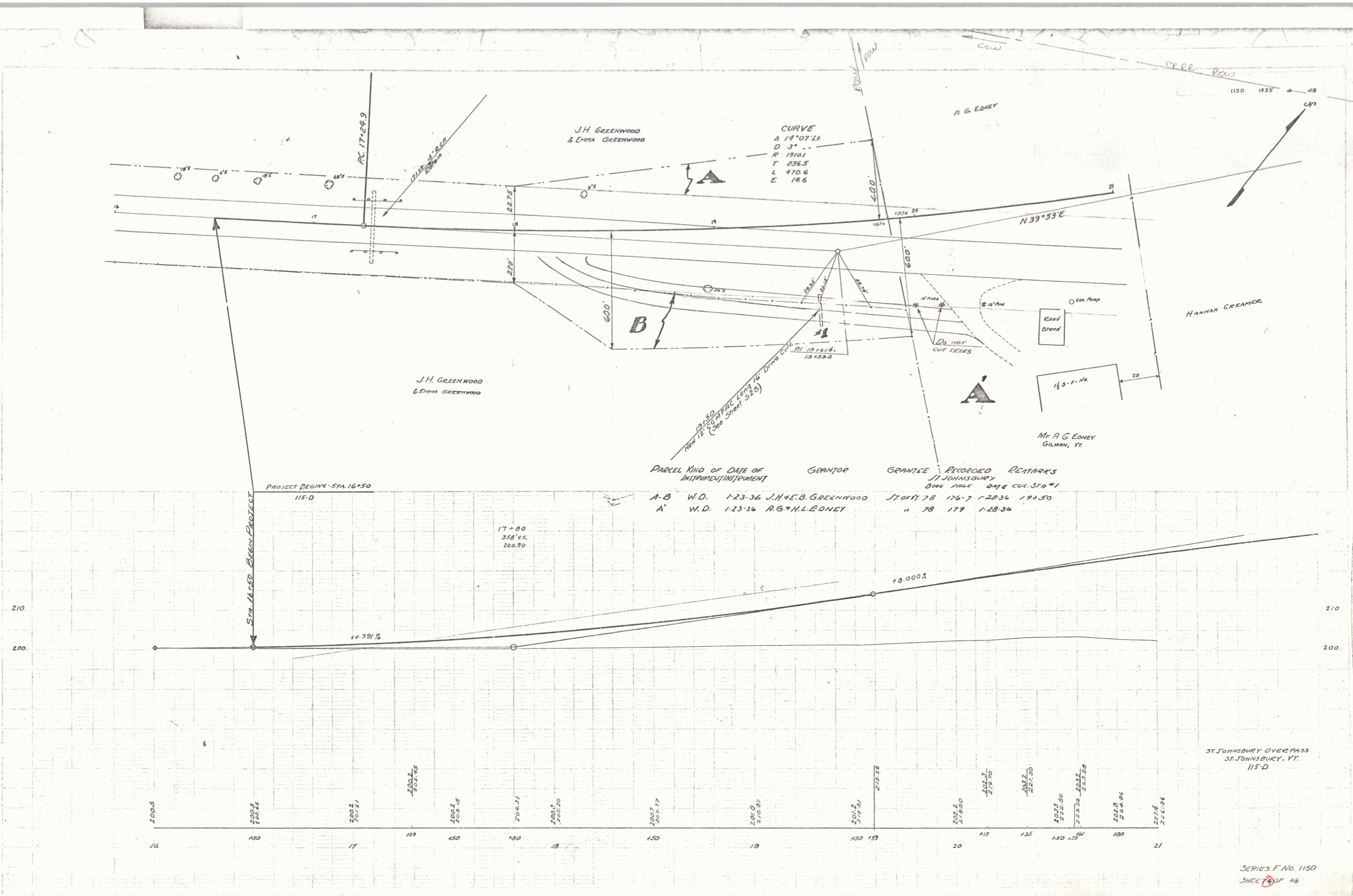
SCALES

TITLE	1" = 200'
TYPICAL	1" = 2'
PLAN	1" = 20'
PROFILE	1" = 5'
CROSS-SECTIONS	1" = 5'

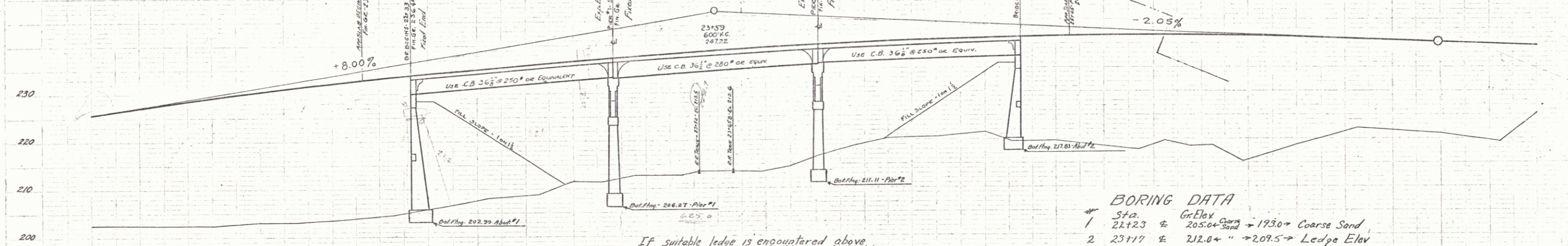
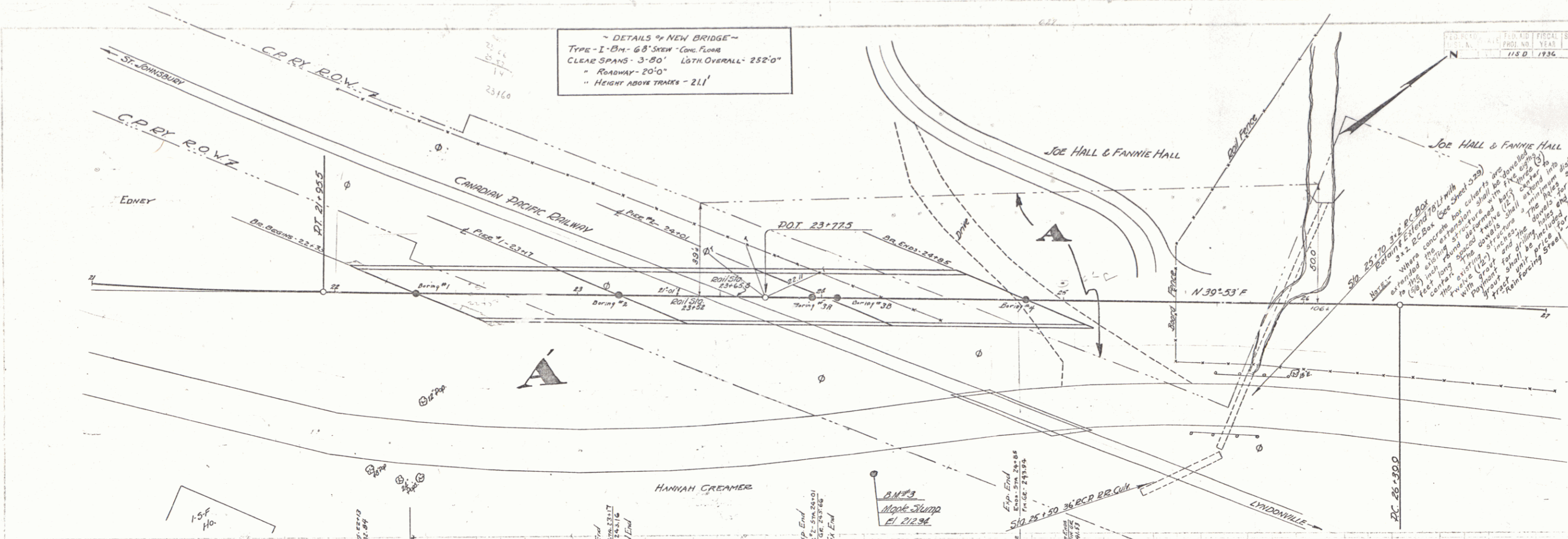
These plans are subject to such revisions as may be required by the Bureau of Public Roads or the Commissioner of Highways. Construction is to be carried on in accordance with the plans and Standard Road and Bridge Specifications of 1935, including all subsequent approved revisions, and such revised specifications and special provisions as are submitted with the plans.

RECOMMENDED [Signature] DISTRICT ENGINEER BUREAU OF PUBLIC ROADS
 RECOMMENDED FOR APPROVAL [Signature] CHIEF ENGINEER BUREAU OF PUBLIC ROADS
 APPROVED [Signature] DIRECTOR BUREAU OF PUBLIC ROADS

SERIES W.P.G.H. NO. 1150 FILED
 SHEET 1 OF 48



DETAILS OF NEW BRIDGE
 TYPE - I-Bm - 68' SPAN - CONC. FLOOR
 CLEAR SPANS - 3-80' LATH OVERALL - 252'-0"
 ROADWAY - 20'-0"
 HEIGHT ABOVE TRACKS - 21'-1"

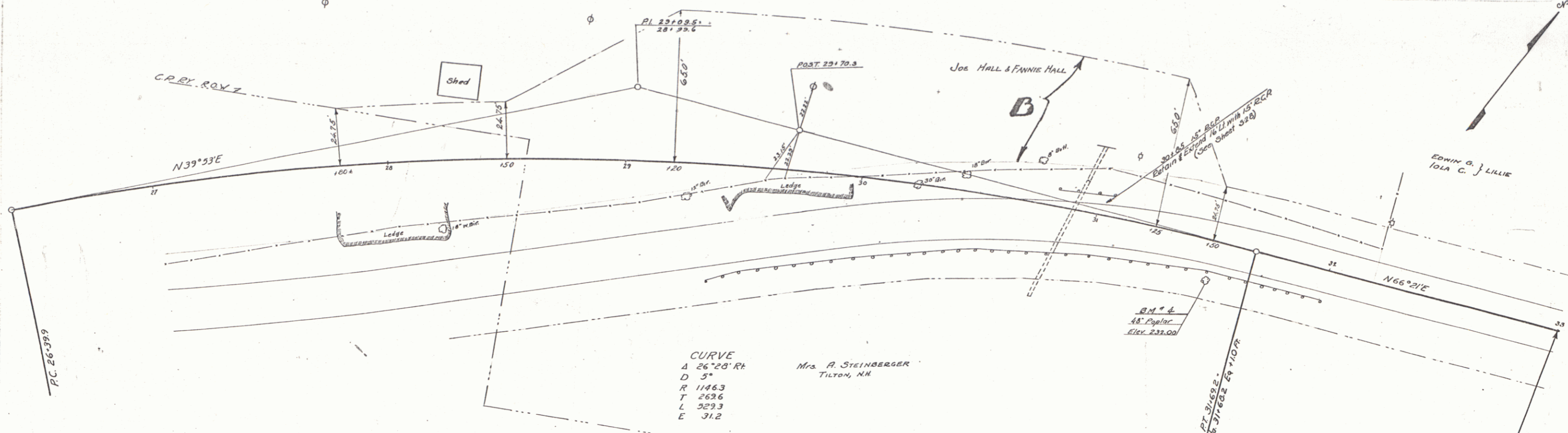


Parcel	Kind of Instrument	Date of Instrument	Grantor	Grantee	Recorded Book Page	Remarks
A.B.	N.D.	1-27-36	JOE & FANNIE HALL	ST. JOHNSBURY	100-1	1-31-36
A	N.D.	1-23-36	HANNAN CREAMER	"	78 178	1-28-36

BORING DATA

No.	Sta.	Gr. Elev.	Remarks
1	22+23	205.00	→ 1930 → Coarse Sand
2	23+17	212.00	→ 209.5 → Ledge Elev
3A	23+90	214.00	→ 211.5 → " "
3B	24+05	218.00	→ 213.0 → " "
4	24+85	220.00	→ 218.0 → " "

Sta.	Elev.	Sta.	Elev.	Sta.	Elev.	Sta.	Elev.	Sta.	Elev.	Sta.	Elev.	Sta.	Elev.	Sta.	Elev.	Sta.	Elev.	Sta.	Elev.																																																																																																																																																																																																																																																																																																																																														
21	222.4	125	220.7	130	222.3	135	221.6	140	223.1	145	222.8	150	224.0	155	223.5	160	225.0	165	224.5	170	226.0	175	225.5	180	227.0	185	226.5	190	228.0	195	227.5	200	229.0	205	228.5	210	230.0	215	229.5	220	231.0	225	230.5	230	232.0	235	231.5	240	233.0	245	232.5	250	234.0	255	233.5	260	235.0	265	234.5	270	236.0	275	235.5	280	237.0	285	236.5	290	238.0	295	237.5	300	239.0	305	238.5	310	240.0	315	239.5	320	241.0	325	240.5	330	242.0	335	241.5	340	243.0	345	242.5	350	244.0	355	243.5	360	245.0	365	244.5	370	246.0	375	245.5	380	247.0	385	246.5	390	248.0	395	247.5	400	249.0	405	248.5	410	250.0	415	249.5	420	251.0	425	250.5	430	252.0	435	251.5	440	253.0	445	252.5	450	254.0	455	253.5	460	255.0	465	254.5	470	256.0	475	255.5	480	257.0	485	256.5	490	258.0	495	257.5	500	259.0	505	258.5	510	260.0	515	259.5	520	261.0	525	260.5	530	262.0	535	261.5	540	263.0	545	262.5	550	264.0	555	263.5	560	265.0	565	264.5	570	266.0	575	265.5	580	267.0	585	266.5	590	268.0	595	267.5	600	269.0	605	268.5	610	270.0	615	269.5	620	271.0	625	270.5	630	272.0	635	271.5	640	273.0	645	272.5	650	274.0	655	273.5	660	275.0	665	274.5	670	276.0	675	275.5	680	277.0	685	276.5	690	278.0	695	277.5	700	279.0	705	278.5	710	280.0	715	279.5	720	281.0	725	280.5	730	282.0	735	281.5	740	283.0	745	282.5	750	284.0	755	283.5	760	285.0	765	284.5	770	286.0	775	285.5	780	287.0	785	286.5	790	288.0	795	287.5	800	289.0	805	288.5	810	290.0	815	289.5	820	291.0	825	290.5	830	292.0	835	291.5	840	293.0	845	292.5	850	294.0	855	293.5	860	295.0	865	294.5	870	296.0	875	295.5	880	297.0	885	296.5	890	298.0	895	297.5	900	299.0	905	298.5	910	300.0	915	299.5	920	301.0	925	300.5	930	302.0	935	301.5	940	303.0	945	302.5	950	304.0	955	303.5	960	305.0	965	304.5	970	306.0	975	305.5	980	307.0	985	306.5	990	308.0	995	307.5	1000	309.0



Parcel	Kind of Date of Instrument	Date of Instrument	Grantor	Grantee	Recorded	Remarks
A-B	W.O.	1-27-34	Joe & Fannie Hall	From Yr. 78	180-1	1-31-34

