

DRAWER # 129

INDEX OF SHEETS

- 1- TITLE PAGE
- 2- TYPICAL CROSS SECTION OF IMPROVEMENT
- 3- DRAINAGE & ITEM QUANTITY SHEET
- 4- EARTHWORKS
- 5- PLAN & PROFILE SHEET
- 6- BRIDGE PLAN SHEET
- 7- SUPERSTRUCTURE DETAILS
- 8- ABUTMENT #1
- 9- PIER #1
- 10- PIER #2
- 11- ABUTMENT #2
- 12- STEEL REINFORCING SHEET
- 13- STANDARD BRIDGE SHEET SCB-30-58
- 14- STANDARD BRIDGE SHEET SB-20-56
- 15- STANDARD BRIDGE SHEET SB-22-58
- 16- STANDARD BRIDGE SHEET SB-56-57
- 17- STANDARD SHEET A-61 (DRILLING & BLASTING)
- 18- STANDARD SHEET B-1 (BANKING TABLES)
- 19- STANDARD SHEET C-1 (CURBS)
- 20- STANDARD SHEET D-2 (DRAINAGE)
- 21- STANDARD SHEET D-8 (RCDL)
- 22- STANDARD SHEET D-9 (RCDL TOP)
- 23- STANDARD SHEET D-11 (STEEL GRATE)
- 24- STANDARD SHEET E-1 (BARRICADES, SIGNS & LIGHTS)
- 25- STANDARD SHEET E-2 (BARRICADES, SIGNS & LIGHTS)
- 26- STANDARD SHEET G-3 (GUARD RAIL)
- 27- STANDARD SHEET G-4 (GUIDE POSTS)
- 28- STANDARD SHEET J-1 (MARKERS)
- 29- STANDARD SHEET H-1a (METAL BIN-TYPE RETAINING WALL)
- 30- STANDARD SHEET H-1b (METAL BIN-TYPE RETAINING WALL)
- 31-38 CROSS SECTIONS
- 39-43 CHANNEL SECTIONS

STATE OF VERMONT
DEPARTMENT OF HIGHWAYS
PROPOSED IMPROVEMENT

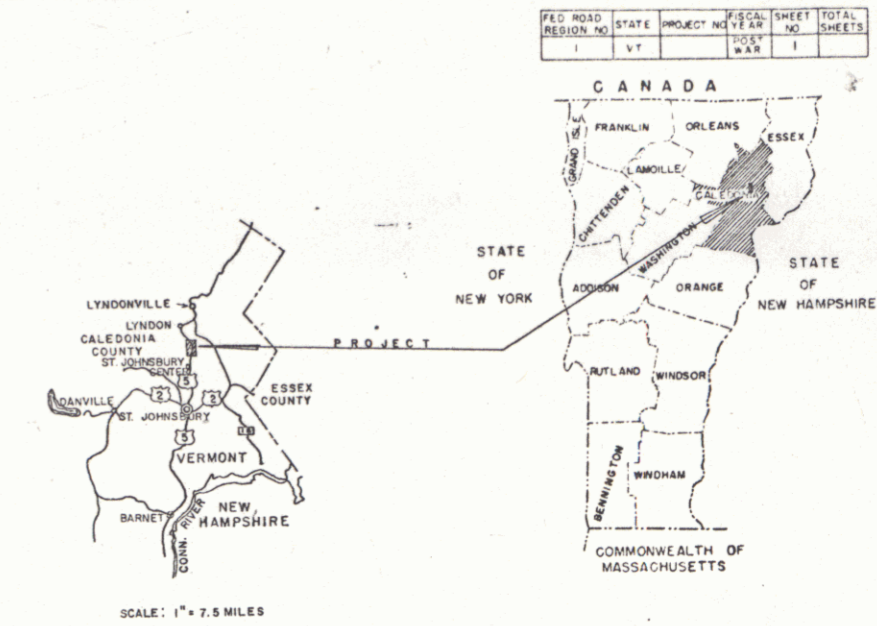
TOWN OF ST. JOHNSBURY
COUNTY OF CALEDONIA
U.S. ROUTE 5
ST. JOHNSBURY-LYNDONVILLE ROAD

Pin# 99R233

BEGINNING AT A POINT 5974.2 FEET SOUTHWESTERLY OF
THE ST. JOHNSBURY-LYNDON TOWN LINE AND EXTENDING
NORTHEASTERLY 1000.0 FEET.

LENGTH OF ROADWAY 1302.00 FT. 0.247 MILES
LENGTH OF BRIDGE 247.95 FT. 0.047 MILES
LENGTH OF PROJECT 1549.95 FT. 0.294 MILES

1960 ADT	3275
1980 ADT	2900
1980 DHV	420
D	62%
T	6%
V	40 MPH

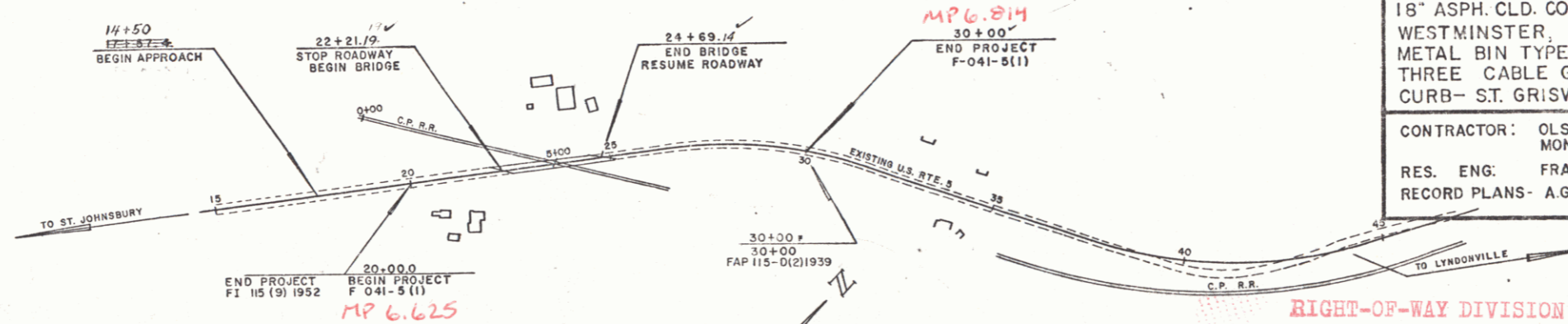


PROJECT-NAME-&NUMBER-TYPE-PAVEMENT-AREA
ST. JOHNSBURY-F041-5(1)-BIT-CONC. 4,009 SY
RECORD PLANS MATERIALS

SUB-BASE OF GRAVEL - BEGIN PIT - LYNDON, VT.
CRUSHED GRAVEL BASE COURSE - CALEDONIA SAND & GRAVEL CO. WATERFORD, VERMONT.
GRANITE BRIDGE-CURB-ROCK OF AGES CORP BARRE, VERMONT.
TAR EMULSION - KOPPERS CO. INC. - PITTSBURG, PA.
ASPHALTIC CEMENT - SOCONY VACUUM - E. PROVIDENCE R.I.
ASPHALTIC ASBESTOS COATING - BARRETT CO. MALDEN, MASS.
BITUMINOUS CONCRETE - L.M. PIKE & SON LISBON, N.H.
CONCRETE CLASS "B" CARPENTER'S REDDY MIX CONCRETE - ST. JOHNSBURY, VT.
REINFORCING STEEL - BETHLEHEM STEEL CO. - BETHLEHEM, PA.
STRUCTURAL STEEL, BRIDGE RAILING & CAST IRON DROP INLET GRATES - VERMONT STRUCTURAL STEEL CO. BURLINGTON, VT.
BRIDGE PAINT - WATERPROOF PAINT & VARNISH CO. WATERTOWN, MASS.
18" ASPH. CLD. CORR. GALV. METAL PIPE - NORTHEASTERN CULVERT CO. - WESTMINSTER, VERMONT.
METAL BIN TYPE RETAINING WALL - NEW-ENGLAND METAL PIPE CORP. BOS. MASS.
THREE CABLE GUARD RAIL, STEEL MARKER POSTS & TREATED TIMBER-CURB - ST. GRISWOLD & CO. INC. - ESSEX JUNCTION, VT.

CONTRACTOR: OLSON CONSTRUCTION CORP. MONTPELIER, VT.
RES. ENG: FRANK E. ALDRICH
RECORD PLANS - A.G. SPIDLE

CONTRACT DATED - JULY 25, 1961
STARTED - JULY 31, 1961
COMPLETED - JUNE 28, 1962
ACCEPTED - JUNE 28, 1962



RIGHT-OF-WAY DIVISION
TOWN FILE

PERPETUAL

Town of US5
(To Be Returned To R.O.W. Division)

REVISED PLANS AUGUST 8, 1961 W.M.S.

NOTE: ANY FURTHER INFORMATION CONCERNING FINAL QUANTITIES, AMOUNTS OR OTHER DETAILS RELATIVE TO THIS PROJECT MAY BE FOUND IN EITHER THE FIELD BOOKS OR THE ESTIMATE FILE.

COUNT	ST. JOHNSBURY
TOWN	ST. JOHNSBURY
FENCE	
STONE	
UNFEN	
GUARD	
TRAVE	
RAILRC	
RETAIN	
CENTER	
SURVEY	
CULVER	
DROP I	
TROLLE	
POWER	
TELEPH	
TREES	
HEDGE	

ST. JOHNSBURY F 041-5(1)
CONTRACTOR: OLSON CONSTRUCTION CORP. MONTPELIER, VT.
RECORD PLANS - A.G. SPIDLE
CONST. COMPLETED JUNE 28, 1962

GROUND ELEVATION DATA

DATE	LINE
DATE	LINE

GRADE ELEVATION DATA

DATE	LINE
DATE	LINE

CURVE DATA

DEFLECTION OF ANGLE	A
DEGREE OF CURVE	D
RADIUS OF CURVE	R
TANGENT DISTANCE	T
LENGTH OF CURVE	L
EXTERNAL DISTANCE	E
POINT OF INTERSECTION	PI
POINT OF CURVE	PC
POINT OF TANGENT	PT
POINT ON TANGENT	POT
POINT ON SUB-TANGENT	POST

SCALES

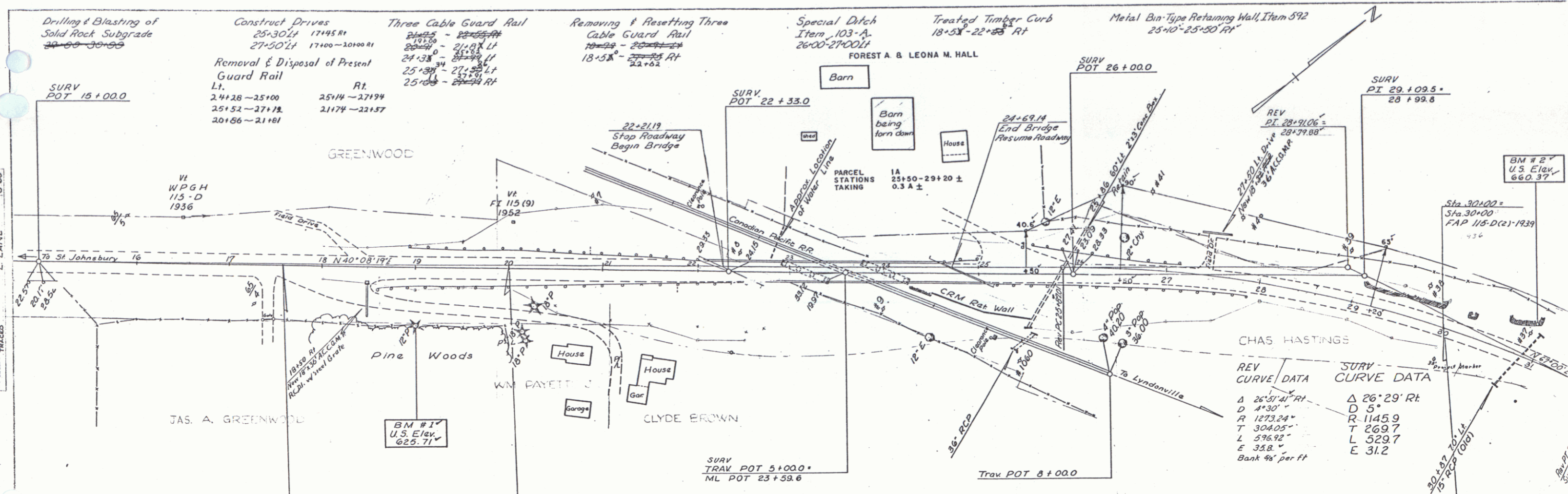
TITLE	1" = 200'
TYPICAL	1" = 3'
PLAN	1" = 50'
PROFILE HORIZONTAL	1" = 50'
PROFILE VERTICAL	1" = 10'
CROSS-SECTIONS	1" = 10'

THESE PLANS ARE SUBJECT TO SUCH REVISIONS AS MAY BE REQUIRED BY THE BUREAU OF PUBLIC ROADS OR THE COMMISSIONER OF HIGHWAYS.
CONSTRUCTION IS TO BE CARRIED ON IN ACCORDANCE WITH THE PLANS AND THE STANDARD SPECIFICATIONS FOR HIGHWAY AND BRIDGE CONSTRUCTION OF JANUARY 1958 SUBMITTED TO THE BUREAU OF PUBLIC ROADS AS APPROVED JULY 5, 1956, INCLUDING ALL SUBSEQUENT APPROVED REVISIONS AND SUCH REVISED SPECIFICATIONS AND SPECIAL PROVISIONS AS ARE SUBMITTED WITH THE PLANS.

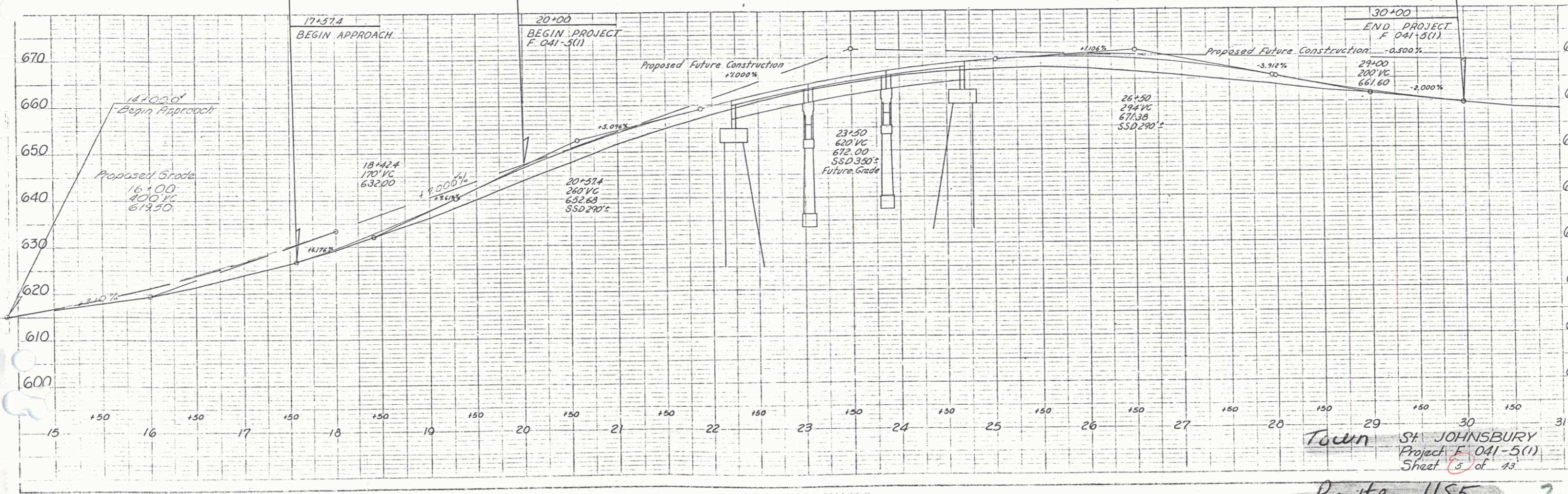
DEPARTMENT OF COMMERCE
BUREAU OF PUBLIC ROADS

APPROVED DATE	APPROVED DATE	APPROVED DATE	APPROVED DATE	APPROVED DATE	APPROVED DATE
SECONDARY ENGINEER	CONSTRUCTION ENGINEER	BRIDGE ENGINEER	DISTRICT ENGINEER	HIGHWAY ENGINEER	CHIEF ENGINEER

PROJECT F NO 041-5(1)
SHEET 1 OF 43 SHEETS



REV CURVE DATA	SURV CURVE DATA
Δ 26°51'41" Rt	Δ 26°29' Rt
D 4°30'	D 5°
R 1273.24'	R 1145.9
T 304.05'	T 269.7
L 596.92'	L 529.7
E 35.8'	E 31.2
Bank 4% per ft	



Town **St. JOHNSBURY**
 Project **F-041-5(1)**
 Sheet **5** of **13**
 Route **US5** **2**