

PLANK GUARD RAIL Item 5A1
6+50 16 L.F. Lt. (Across old road)

THREE CABLE GUARD RAIL WITH STEEL POSTS

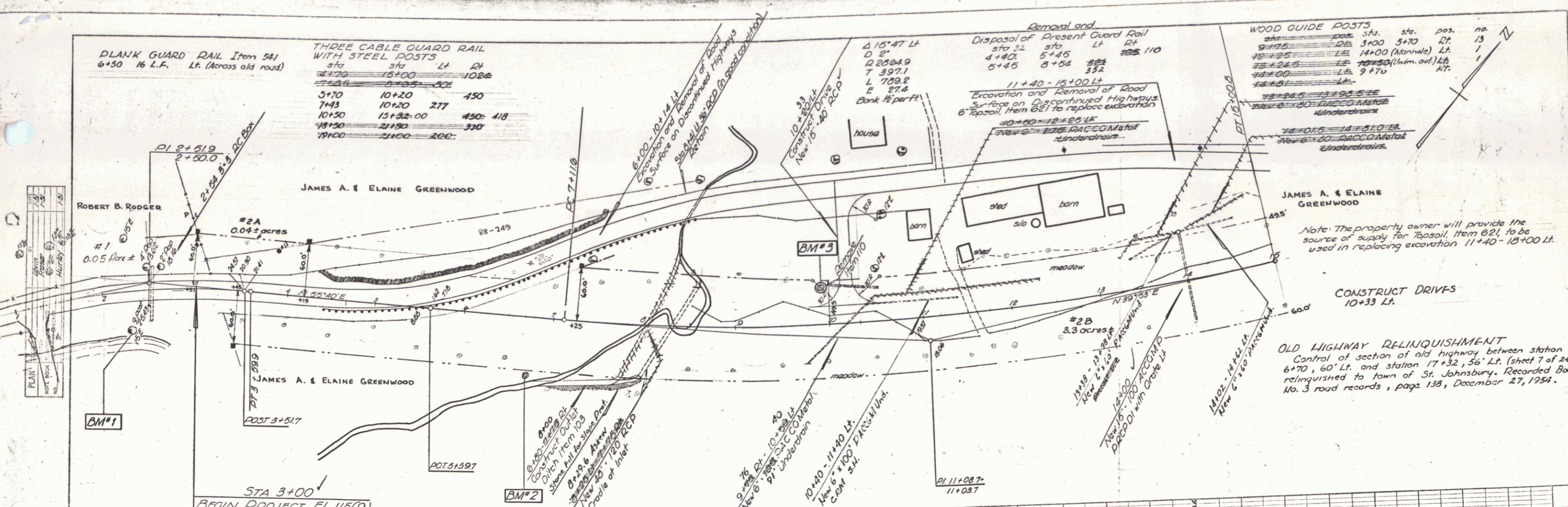
Sta	Sta	Lt	Rt
4+70	15+00		1024
5+70	10+20	450	
7+45	10+20	277	
10+50	15+32.00	450	418
18+50	21+30		330
19+00	21+00	200	

Removal and Disposal of Present Guard Rail

Sta	Sta	Lt	Rt
4+40	5+45		110
5+45	8+04	258	352

WOOD GUIDE POSTS

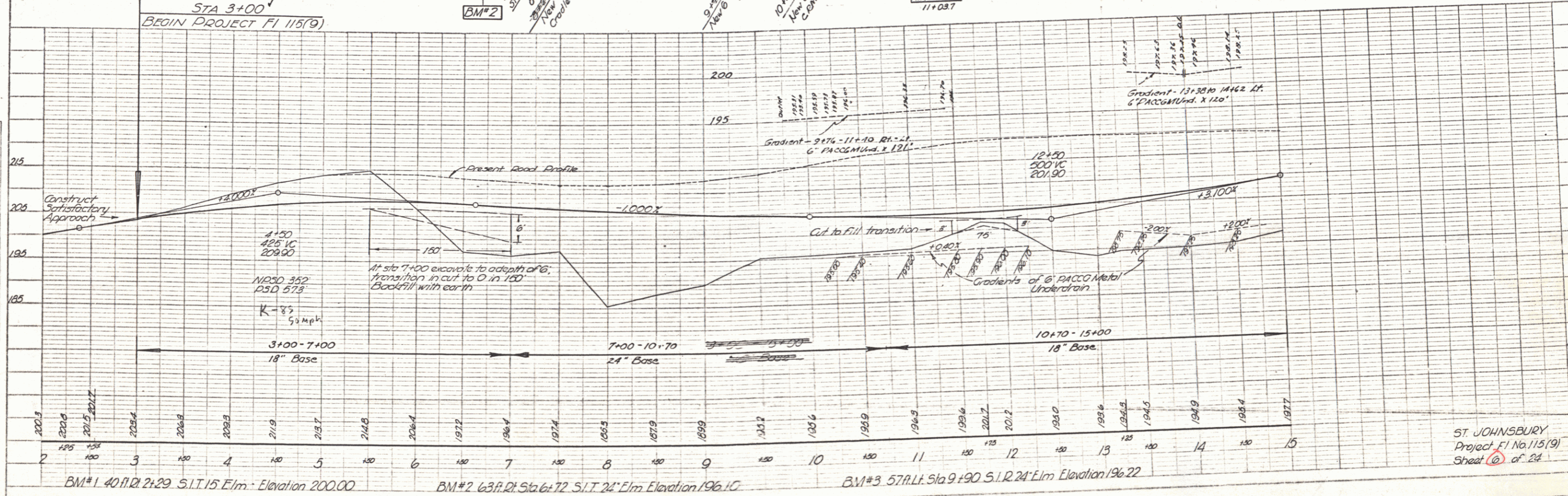
Sta	Sta	Sta	Sta	Pos.	Pos.	Pos.	Pos.
9+25	DE	3+00	5+70	RT	LT	LT	RT
12+25	LE	14+00	(Mannate) LT				
13+25	LE	14+00	(Mannate) LT				
14+00	LE	14+00	(Mannate) LT				
14+00	LE	14+00	(Mannate) LT				



Note: The property owner will provide the source of supply for Topsoil, Item 621, to be used in replacing excavation 11+40 - 15+00 Lt.

CONSTRUCT DRIVES 10+33 Lt.

OLD HIGHWAY RELINQUISHMENT
Control of section of old highway between station 6+70, 60' Lt. and station 17+32, 56' Lt. (Sheet 7 of 24) relinquished to town of St. Johnsbury, Recorded Book No. 3 road records, page 138, December 27, 1954.



PROFILE
DATE: 1/23/54
BY: [Signature]
CHECKED: [Signature]
SCALE: 1" = 10'

BM#1 40 ft. Rt. Sta 2+29 S.I.T. 15' Elm. Elevation 200.00

BM#2 63 ft. Rt. Sta 6+72 S.I.T. 24' Elm. Elevation 196.10

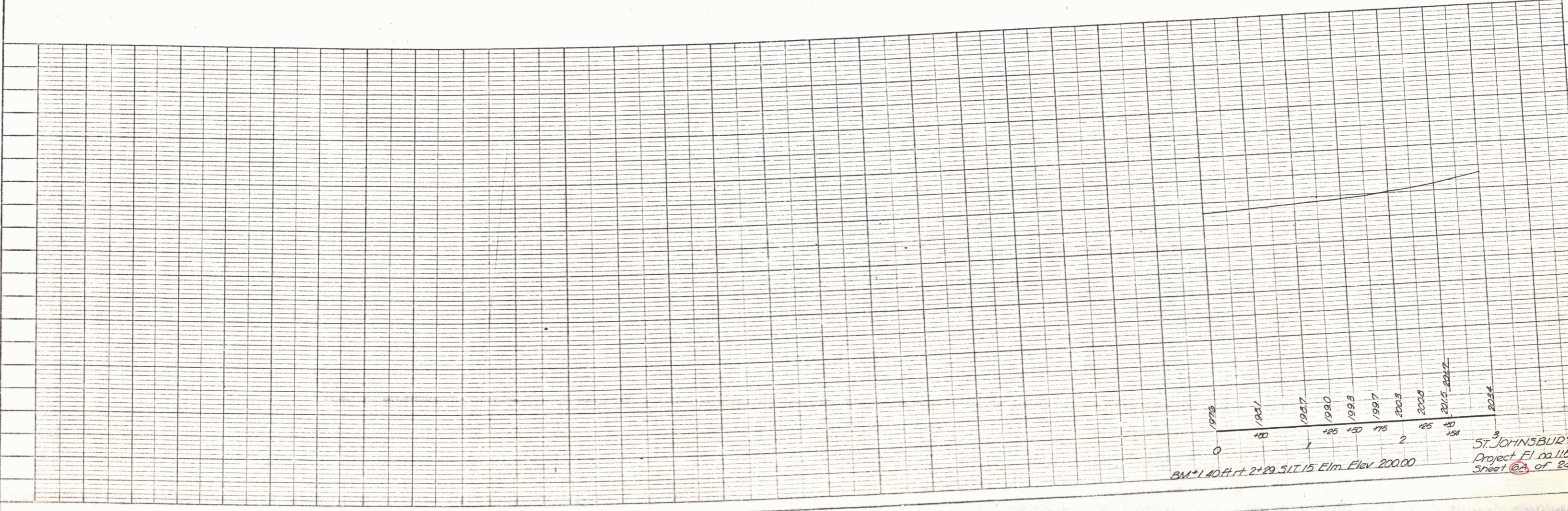
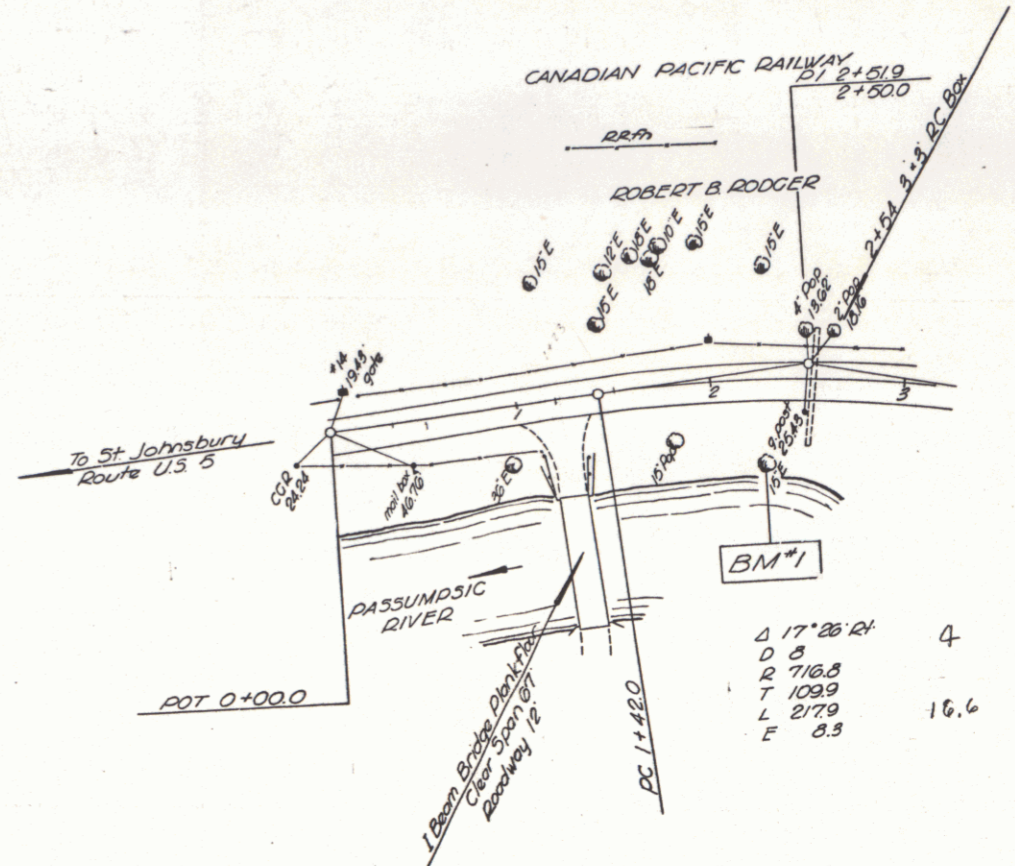
BM#3 57 ft. Lt. Sta 9+90 S.I.T. 24' Elm. Elevation 196.22

ST. JOHNSBURY
Project F1 No. 115(9)
Sheet 6 of 24

PLAN
 DRAWN BY
 CHECKED BY
 DATE

PROFILE
 DRAWN BY
 CHECKED BY
 DATE

WOOD GUIDE POSTS
 0+00 L.A. & R.R. 2.



1978
 1981
 1987
 1990
 1998
 1997
 2003
 2005
 2012
 2017
 2024

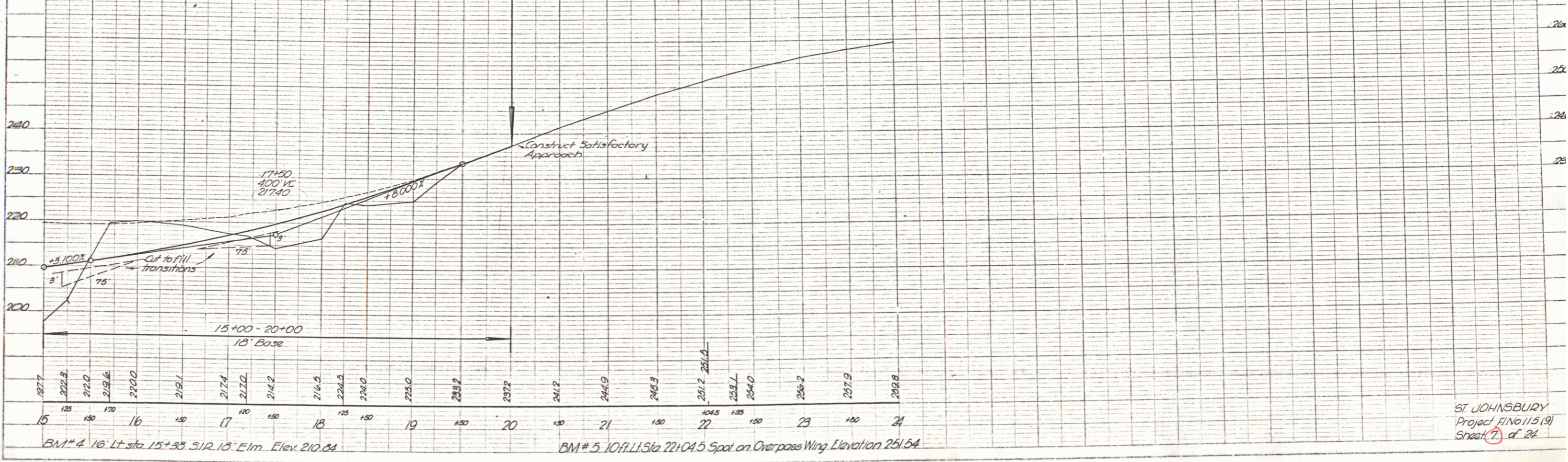
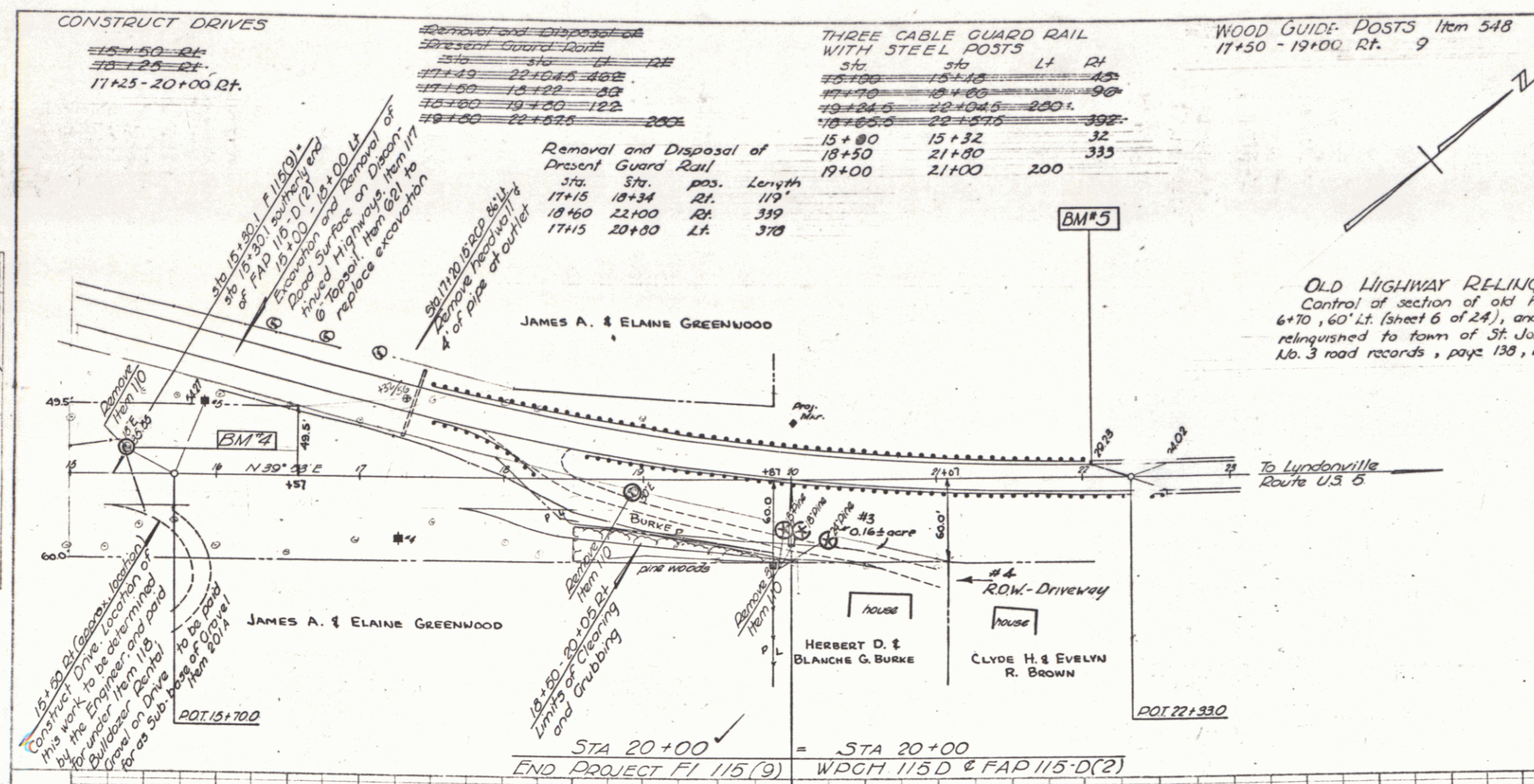
BM*140 Ft. + 2°29' S.I.T. 15 Elm Elev 200.00

ST. JOHNSBURY
 Project E1 no. 115
 Sheet 23 of 24

PLATE 1 - PLAN - PROFILE - C.P. & R.R. STATIONING
 ENGINEER & ARCHITECT
 115 N. STATE ST. ST. JOHNSBURY, VT. 05490
 U.S. & CAN. NO. 348-15

PLAN
 DATE: 1/31/54
 DRAWN BY: Hurley
 CHECKED BY: Hurley
 PROJECT NO. 115(9)

PROFILE
 DATE: 1/31/54
 DRAWN BY: Hurley
 CHECKED BY: Hurley
 PROJECT NO. 115(9)



CONSTRUCT DRIVES
 15+50-20+00 Rt.
 17+25-20+00 Rt.

REMOVAL AND DISPOSAL OF PRESENT GUARD RAIL

Sta.	pos.	Length
17+15	18+34	119'
18+60	22+00	339'
17+15	20+00	378'

THREE CABLE GUARD RAIL WITH STEEL POSTS

Sta.	pos.	Length
15+00	15+32	32'
18+50	21+00	333'
19+00	21+00	200'

WOOD GUIDE POSTS Item 548
 17+50 - 19+00 Rt. 9

OLD HIGHWAY RELINQUISHMENT
 Control of section of old highway between station 6+70, 60' Lt. (sheet 6 of 24), and station 17+32, 36' Lt. relinquished to town of St. Johnsbury. Recorded Book No. 3 road records, page 138, December 27, 1954.

15+00-20+00 (General Location)
 This work to be done in accordance with the 270' sewer and 115' water on Drive from Sta. 30+00 to Sta. 15+00.

Removal and Disposal of Present Guard Rail
 Sta. 17+15 pos. 18+34 Lt. 119'
 Sta. 18+60 pos. 22+00 Rt. 339'
 Sta. 17+15 pos. 20+00 Lt. 378'

BM# 4 16' Lt. Sta. 15+33 5/12 13" Elm. Elev. 210.84

BM# 5 10' Lt. Sta. 22+04.5 Spot on Overpass Wing Elevation 251.54

ST. JOHNSBURY
 Project #115(9)
 Sheet 7 of 24

PLATE 1 - PLAN-PROFILE OF ROAD
 SURVEYED & DESIGNED BY
 H. S. COLE, INC.