

PLANK GUARD RAIL Item 5A1
6+50 16 L.F. Lt. (Across old road)

sta	sta	Lt	Qt
6+50	15+00	850	1024
7+70	10+20	450	
7+45	10+20	277	
10+50	15+32.00	450	418
18+50	21+30	330	
19+00	21+00	200	

THREE CABLE GUARD RAIL WITH STEEL POSTS

sta	sta	Lt	Qt
6+50	15+00	850	1024
7+70	10+20	450	
7+45	10+20	277	
10+50	15+32.00	450	418
18+50	21+30	330	
19+00	21+00	200	

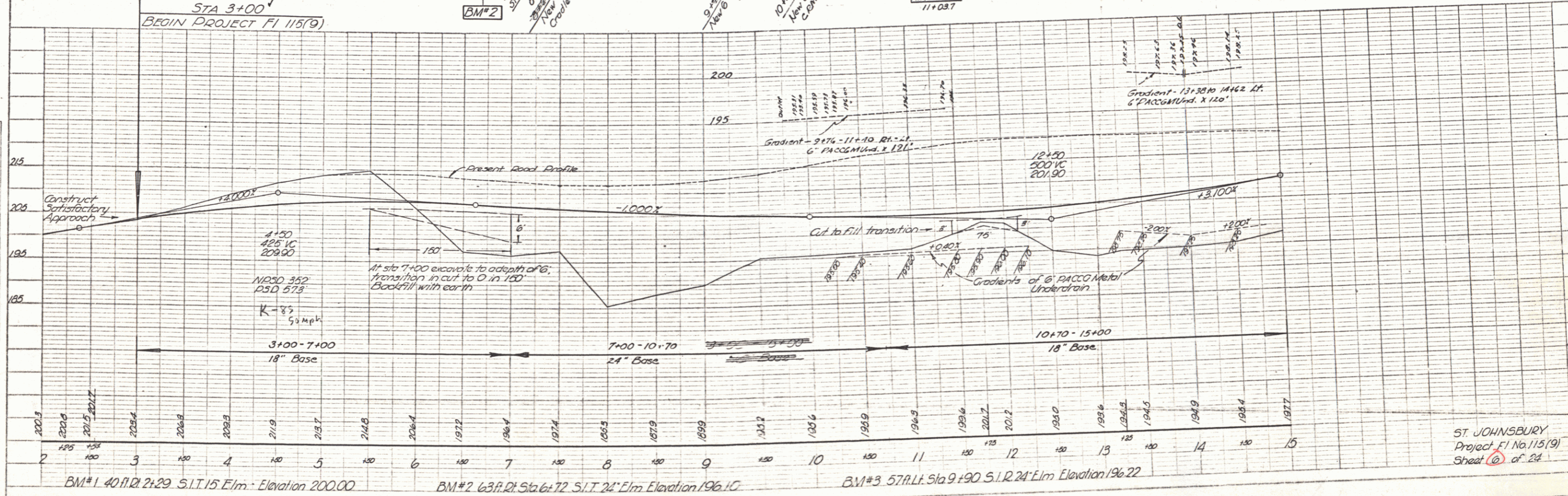
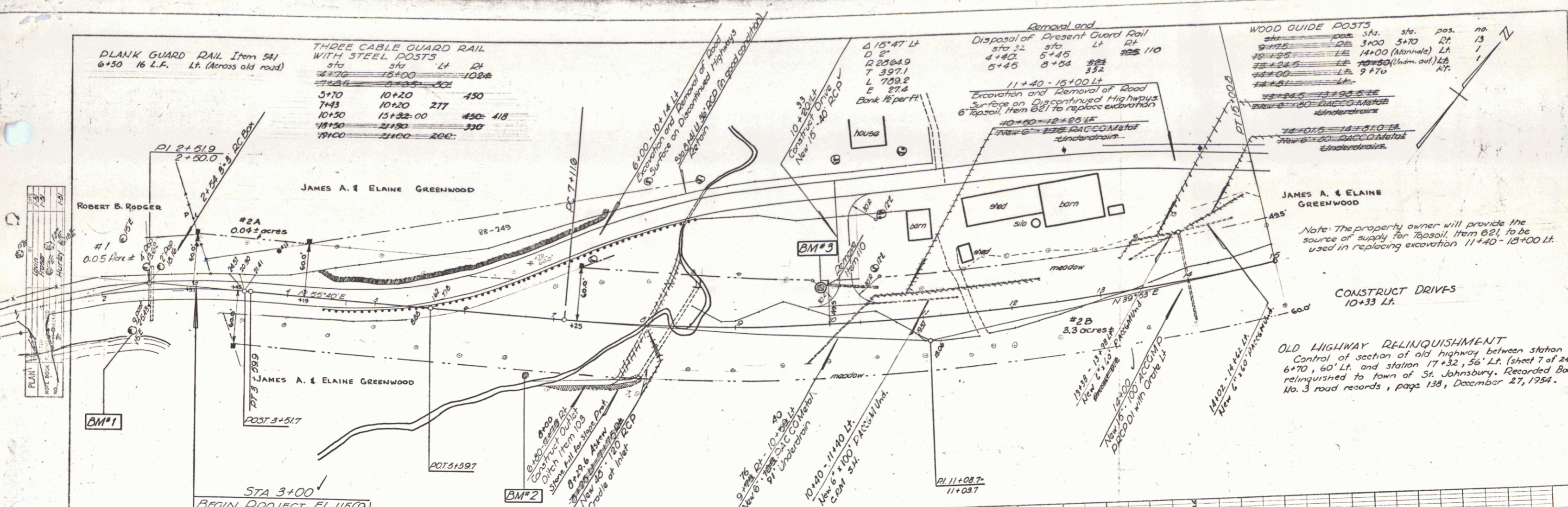
Removal and Disposal of Present Guard Rail

sta	sta	Lt	Qt
4+40	5+45	105	110
5+45	8+04	259	352

11+40 - 15+00 Lt
Excavation and Removal of Road Surface on Discontinued Highway 6' Topsoil, Item 621 to replace excavation

WOOD GUIDE POSTS

sta	pos.	sta.	pos.	no.
9+25	DE	3+00	5+70	13
12+25	LE	14+00	(Mannate) Lt	1
13+25	LE	14+00	(Mannate) Lt	1
14+00	LE	9+70		



PROFILE
 DATE: 11/15/19
 DRAWN BY: [Name]
 CHECKED BY: [Name]

BM#1 40 ft. Lt. Sta 2+29 S.I.T. 15' Elm. Elevation 200.00
 BM#2 63 ft. Lt. Sta 6+72 S.I.T. 24' Elm. Elevation 196.10
 BM#3 57 ft. Lt. Sta 9+90 S.I.T. 24' Elm. Elevation 196.22

Note: The property owner will provide the source of supply for Topsoil, Item 621, to be used in replacing excavation 11+40 - 15+00 Lt.

CONSTRUCT DRIVES 10+33 Lt.

OLD HIGHWAY RELINQUISHMENT
 Control of section of old highway between station 6+70, 60' Lt. and station 17+32, 56' Lt. (Sheet 7 of 24) relinquished to town of St. Johnsbury, Recorded Book No. 3 road records, page 138, December 27, 1954.

ST. JOHNSBURY
 Project F1 No. 115(9)
 Sheet 6 of 24