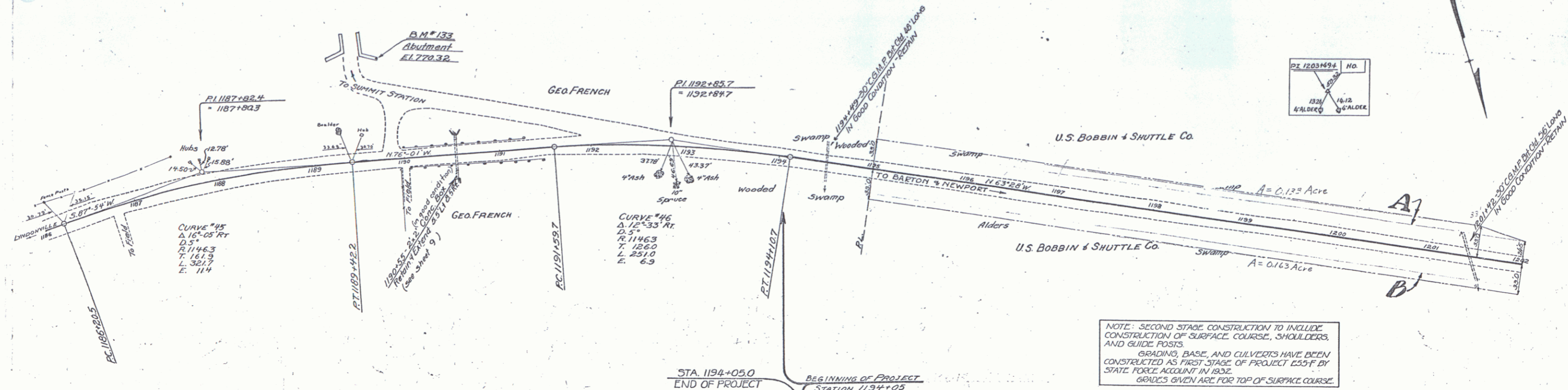
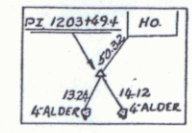
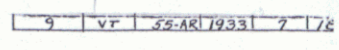




Culv Station	Lt.	Rt.
1194+49	1	1
1201+42	1	1
1203+26	1	1
1226+01	1	1

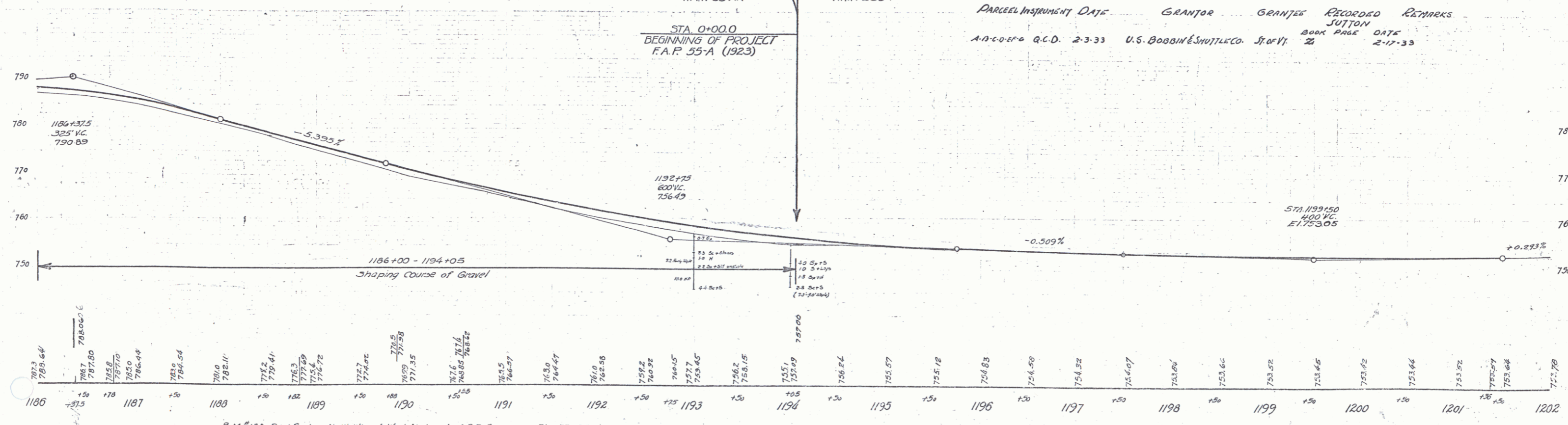
Culv Station	Lt.	Rt.
1221+09	2	2

Sta - 316	Lt.	Rt.	Arch'd.
1210+00-1214+68	-	-	2
1219+60-1221+60	-	-	2
1234+00-1235+28 48' 48"	-	-	4



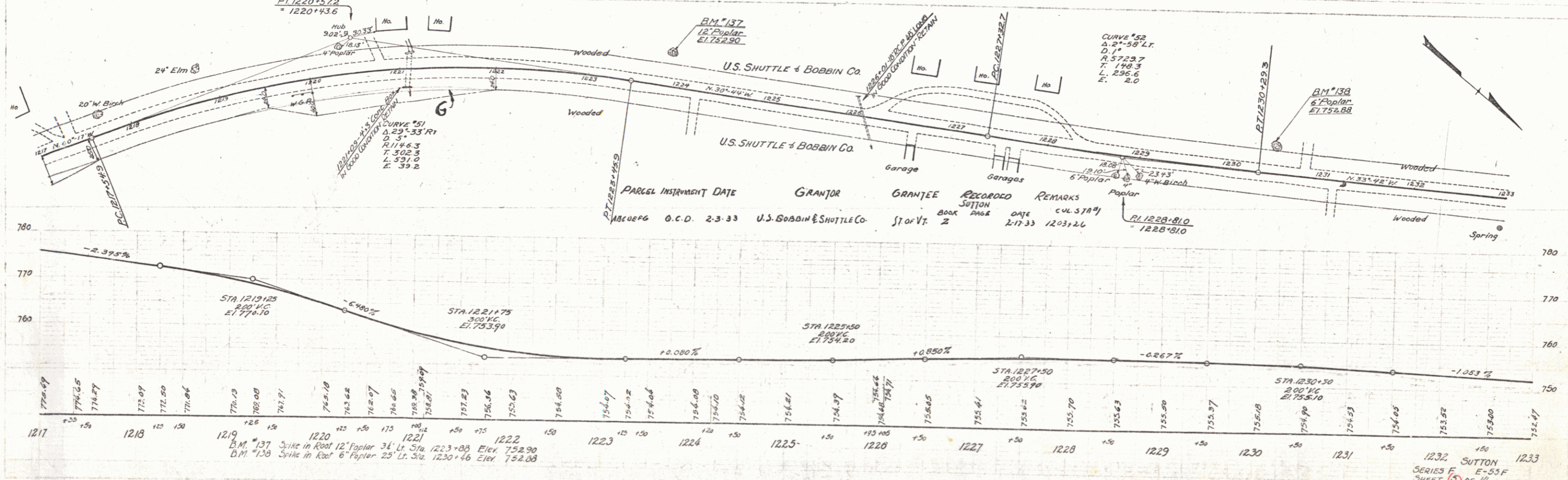
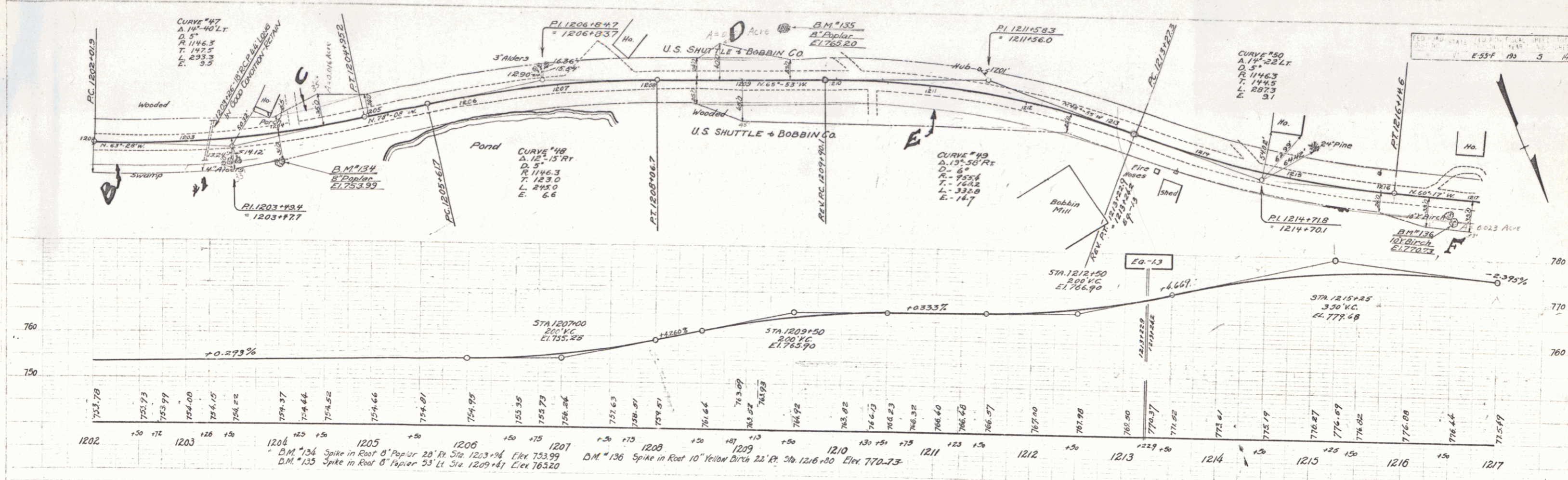
NOTE: SECOND STAGE CONSTRUCTION TO INCLUDE CONSTRUCTION OF SURFACE COURSE, SHOULDERS, AND GUIDE POSTS. GRADING, BASE, AND CULVERTS HAVE BEEN CONSTRUCTED AS FIRST STAGE OF PROJECT E55-F BY STATE ROAD ACCOUNT IN 1932. GRADES GIVEN ARE FOR TOP OF SURFACE COURSE.

Parcel Instrument Date	Grantor	Grantee	Recorded	Remarks
A.A.C. 204 Q.C.D. 2-3-33	U.S. BOBBIN & SHUTTLE CO.	STATE	2	2-17-33



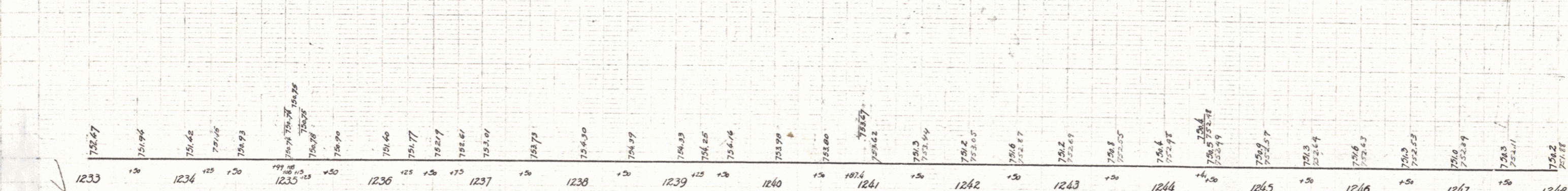
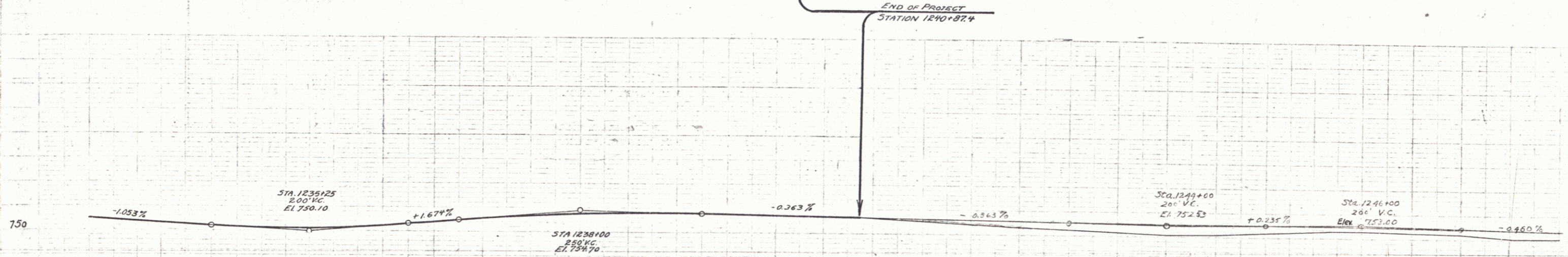
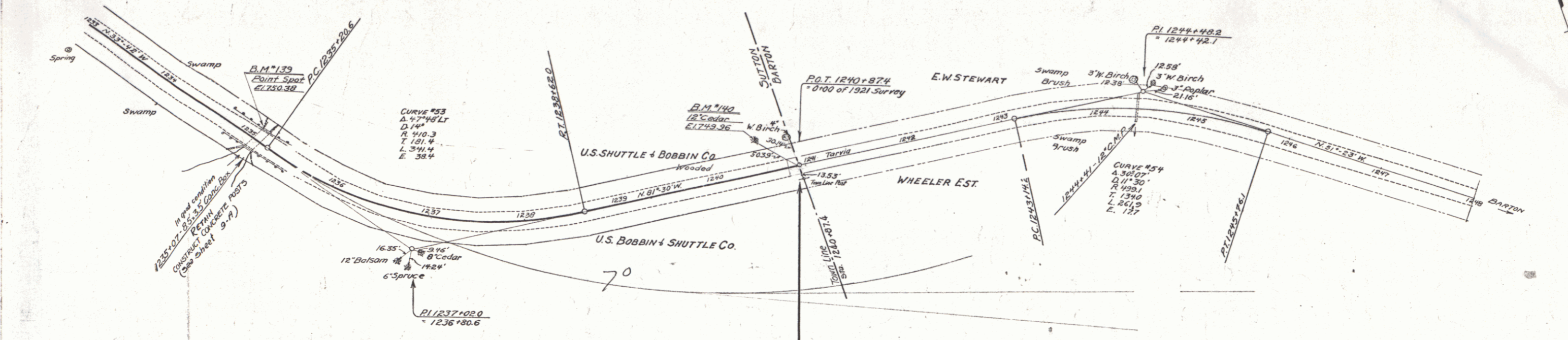
D.M. 133 Faint Spot on North Wing of West Abutment of R.R. Overpass Elev. 770.32

SUTTON SERIES E E 55-F SHEET 14 OF 14



PARCEL INSTRUMENT DATE	GRANTOR	GRANTEE	RECORD BOOK	RECORD DATE	REMARKS
1800EFG	O.C.D. 2-3-33	U.S. SHUTTLE & BOBBIN CO.	St of Vt. 2	2-17-33	1203126
					12281810

1232 SUTTON  
SERIES F E-55F  
SHEET 15 OF 16



B.M. # 139 Paint Spot on Conc. Bridge Rail 13.5' Lt. Sta. 1235+04 Elev. 750.38  
 B.M. # 140 Spike in Trunk 12" Cedar 30' Lt. Sta. 1240+46 Elev. 749.96

