

INDEX OF SHEETS

SHEET NO	TITLE PAGE
2	TYPICAL CROSS-SECTION OF IMPROVEMENT
3	PLAN AND PROFILE STA. 0+00 TO STA. 13+00
4	" " " 13+00 " " 27+00
5	" " " 27+00 " " 40+00
6	" " " 40+00 " " 53+00
7	" " " 53+00 " " 66+78.7
8-17	CROSS SECTIONS.

FED. ROAD DIST. NO.	STATE	FED. AID PROJ. NO.	FISCAL YEAR	SHEET NO.	TOTAL SHEETS
9	VT.	55A	1953	1	7

STATE OF VERMONT
STATE HIGHWAY DEPARTMENT

PLAN AND PROFILE OF PROPOSED
STATE HIGHWAY

FEDERAL AID PROJECT

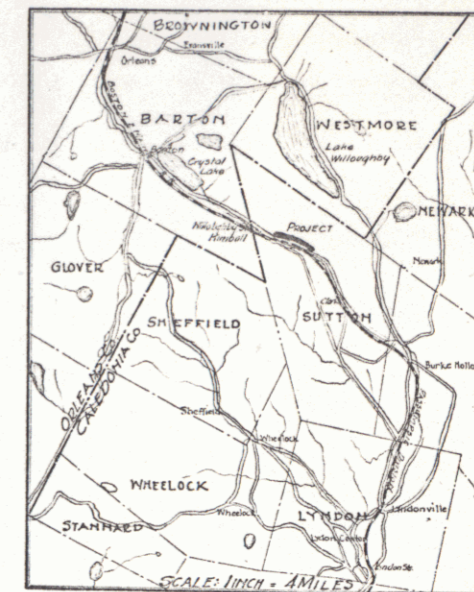
TOWN OF SUTTON

CRYSTAL LAKE ROAD

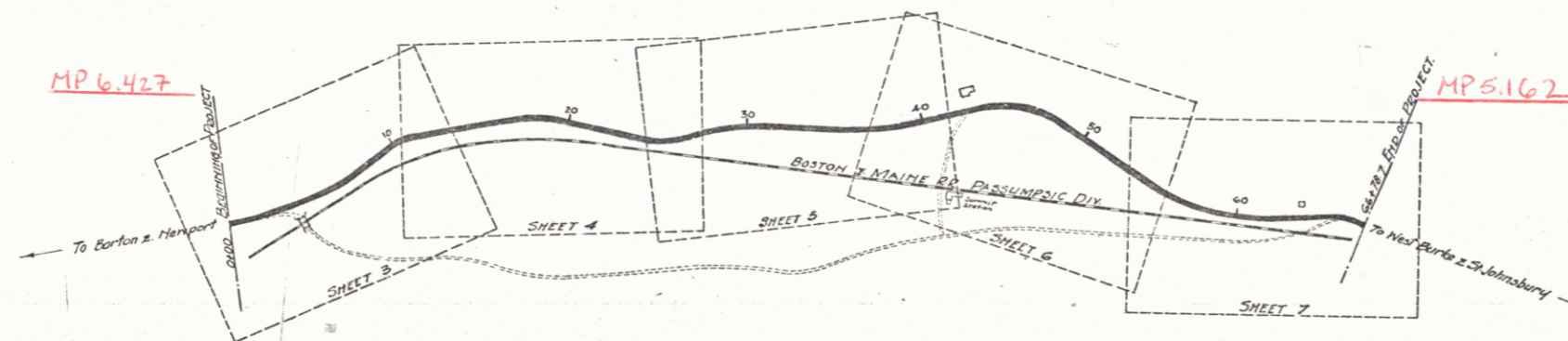
FROM UNDERPASS EAST TO CROSSING

Pin # 998226
Route: US5
Project: FAP 55A

SCALE: PLAN: 1 INCH = 50 FEET
PROFILE: HORIZONTAL 1 IN. = 50 FT. VERT. 1 IN. = 10 FT.
CROSS SECTIONS: 1 INCH = 5 FEET



(To Be Returned to R.O.W. Division)
US5
PERMIT
EIGHT-O'-WAY DIVISION



CONVENTIONAL SIGNS

- COUNTY LINE
- TOWN LINE
- FENCE LINE
- STONE WALL
- UNFENCED PROPERTY
- GUARD RAIL
- TRAVELED WAY
- RAILROAD
- RETAINING WALL
- CENTER & SURVEY LINE
- CULVERT
- DROP INLET
- TROLLEY POLE
- POWER POLE
- TELEPHONE POLE
- TREES
- HEDGE

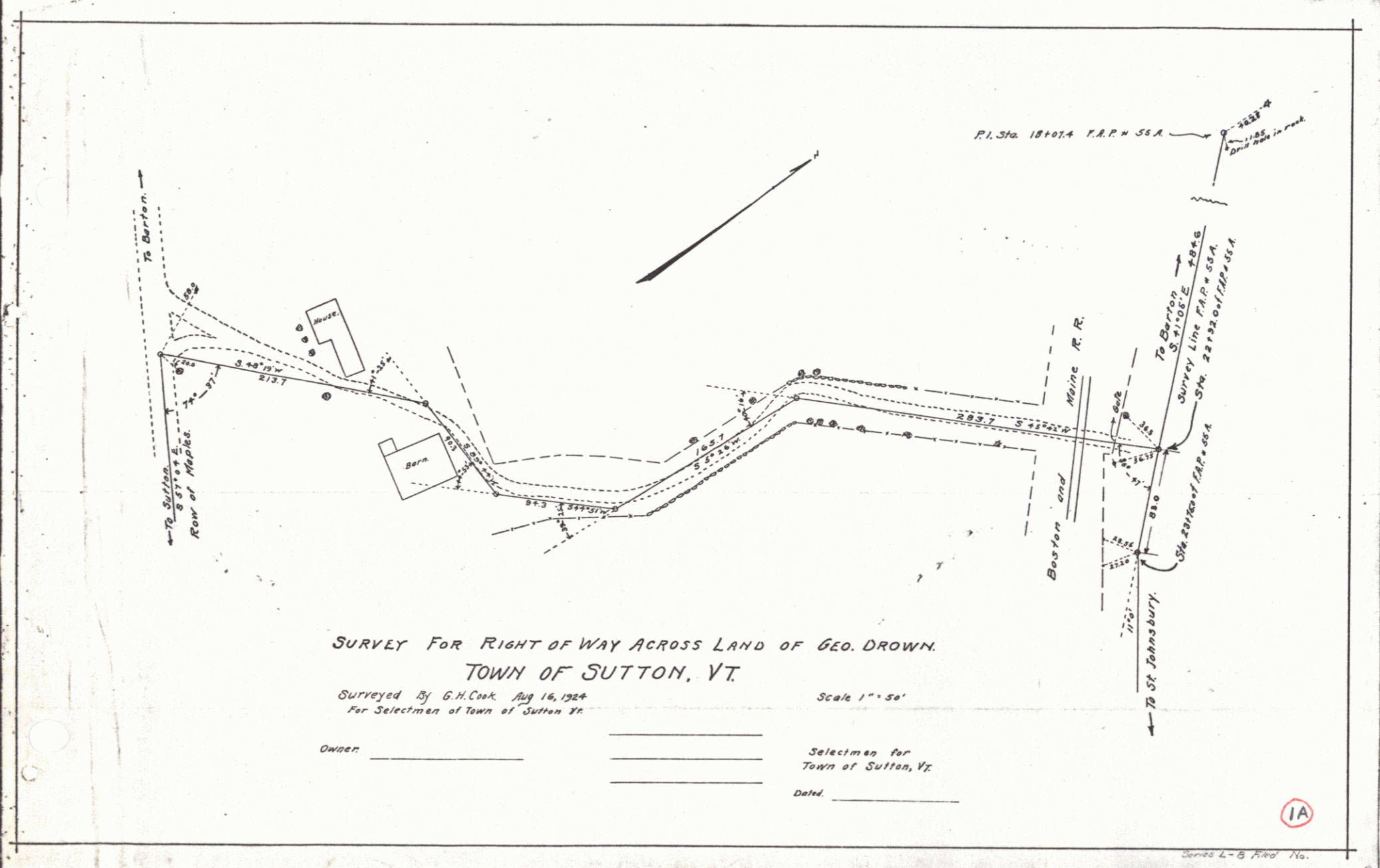
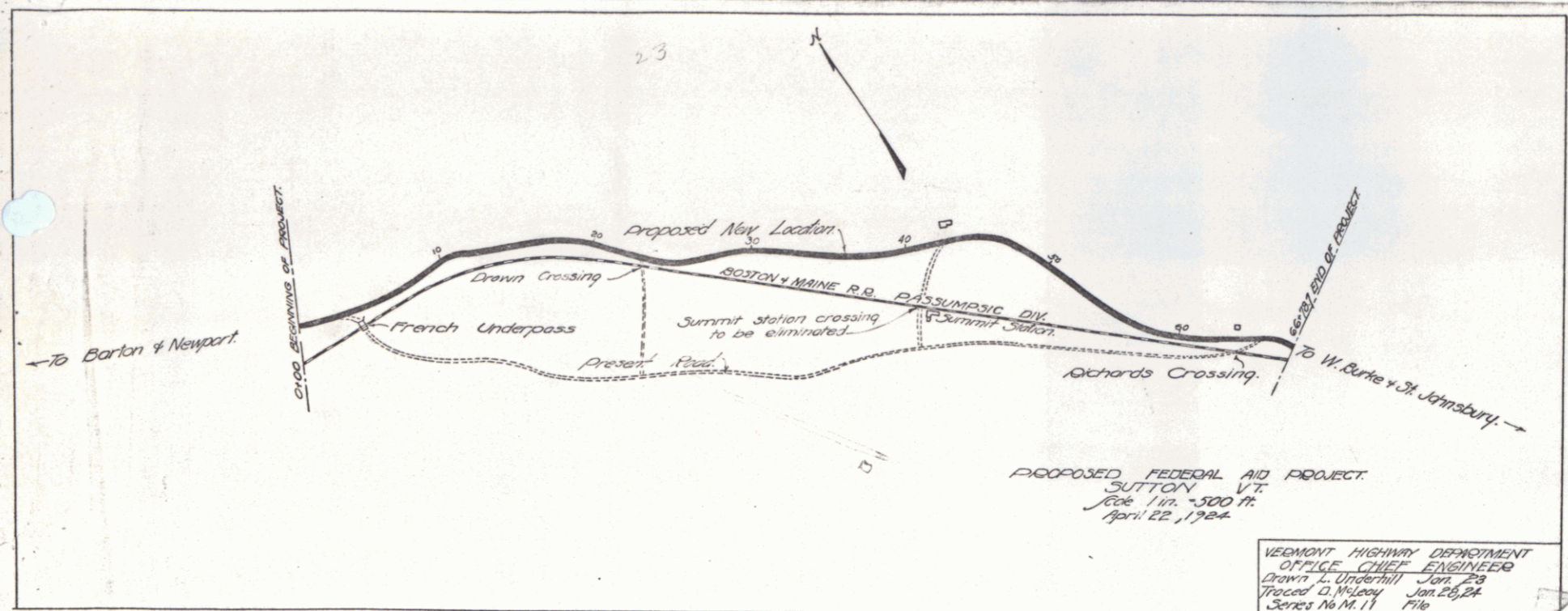
- GROUND ELEVATION
- GRADE ELEVATION
- CURVE DATA
- DEFLECTION ANGLE Δ
- DEGREE OF CURVE D.
- RADIUS OF CURVE R.
- TANGENT DISTANCE T.
- LENGTH OF CURVE L.
- EXTERNAL DISTANCE E.
- POINT OF INTERSECTION P.I.
- POINT OF CURVE P.C.
- POINT OF TANGENT P.T.

LAYOUT
SCALE: 1 IN. = 500 FT.

SUBMITTED BY ORDER OF THE STATE HIGHWAY BOARD
CHIEF ENGINEER DEPARTMENT OF HIGHWAYS
RECOMMENDED
DISTRICT ENGINEER BUREAU OF PUBLIC ROADS
RECOMMENDED FOR APPROVAL
CHIEF ENGINEER BUREAU OF PUBLIC ROADS
APPROVED
DIRECTOR BUREAU OF PUBLIC ROADS

111123

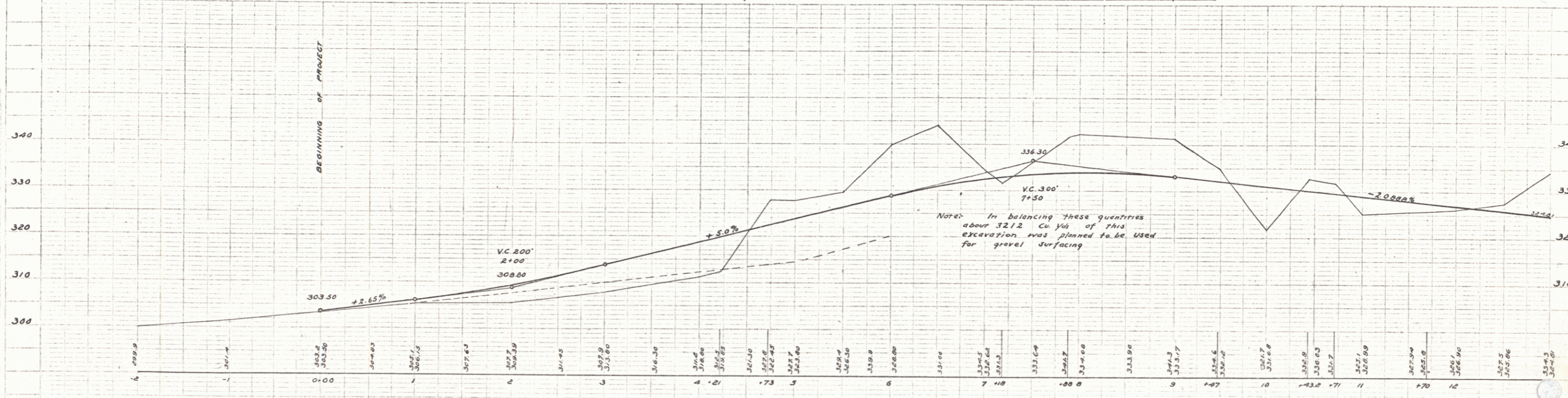
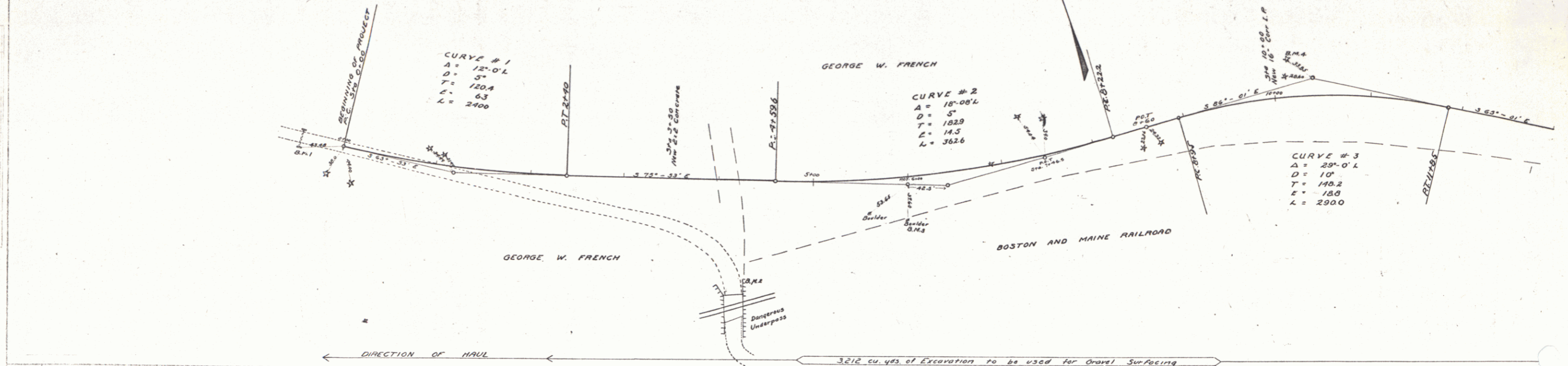
DIST. # 7 PLANS



GUARD RAIL REQUIRED
 On Left
 Sta 2+50 to sta 4+34 length 184 ft
 " 9+27 " " 10+25 " 104 "
 On Right
 Sta 2+75 to sta 4+27 length 152 ft
 " 9+00 " " 10+12 " 24 "
 Total this sheet 464'

NEW CULVERTS REQUIRED
 Sta 3+50 2x2 Concrete 6.6 cu yds
 " " " 1-e 4 " " 0.4 " "
 " " " 1-e 1/2-3 " " 0.4 " "
 Sta 10+00 16" Corr Iron 48 ft
 1-2 1/2-3 Conc. Headwalls 1.3 cu yds

Proj. No.	State	Year	Sheet No.	Total Sheets
9	Vt	558	3	17



B.M. #1 NW corner South Header Culvert Rt. of Sta. 0+00 Elev. 303.62
 B.M. #2 N.E. " East Abut. Underpass Rt. of Sta. 4+00 Elev. 314.85
 B.M. #3 Top of Boulder Rt. of Sta. 6+00 Elev. 333.01
 B.M. #4 Spike in 12" Pine Left of Sta. 10+20 Elev. 330.89

Series P. No. 558-Rfd
 Sheet 3 of 17

GUARD RAIL REQUIRED
 ON LEFT
 Sta 13+90 to Sta 19+30 length 560 ft
 " 23+30 " " 23+62 " 24 "

ON RIGHT
 Sta 19+90 to Sta 19+46 length 448 ft
 " 23+30 " " 23+62 " 24 "

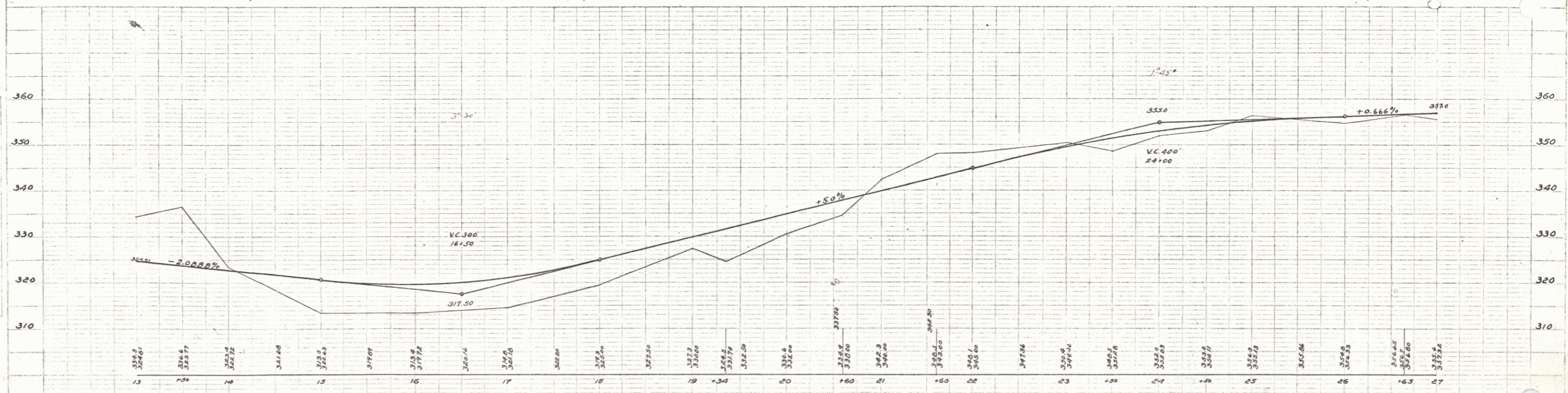
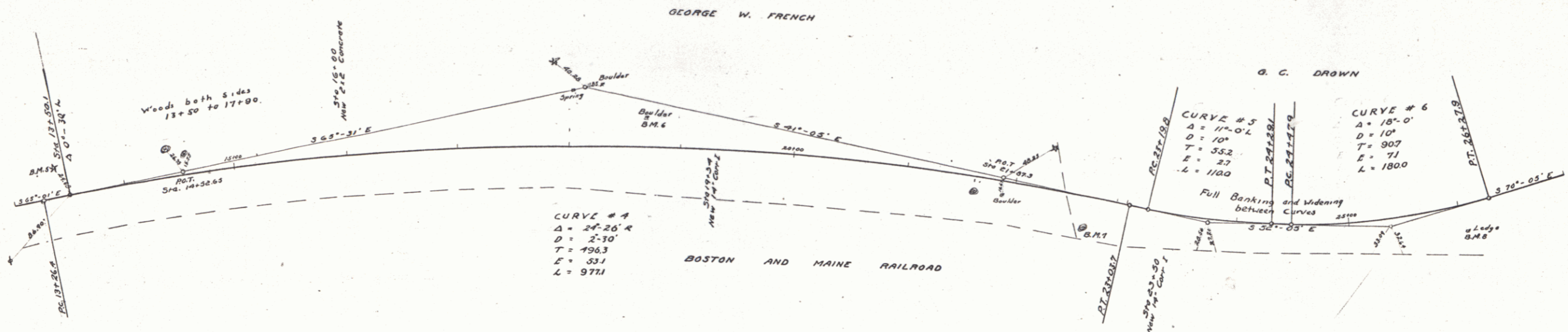
Total this sheet 1064 "

NEW CULVERTS REQUIRED

Sta 16+00	24" Concrete	6.3 cu yds
	1-2-4 "	0.2 "
	1-2-5 "	0.2 "
Sta 19+34	14" Corr Iron	30 ft
	1-2-5 Conc Headwalls	1.0 cu yds
Sta 23+50	14" Corr Iron	32 ft
	1-2-5 Conc Headwalls	1.8 cu yds

FED. ROAD DIST. NO.	STATE	FED. AID FISCAL YEAR	SHEET NO.	TOTAL SHEETS
9	Vt	5.5.4	4	17

W.E. HAINES
 G.E. FRENCH
 G.C. DROWN



B.M. 5 Spike in 10' Pine Left of Sta 13+90 Elev. 329.30
 B.M. 6 Top of Rock Left of Sta. 16+45 Elev. 321.27
 B.M. 7 Spike in 36' Elm RT of Sta 22+65 Elev. 328.00
 B.M. 8 Top of Rock Mt. of Sta 26+00 Elev. 329.39

Series F No. 554 Filed
 Sheet 4 of 17

GUARD RAIL REQUIRED

ON LEFT			
Sta 27+40	to Sta 27+72	length	24 ft
" 28+70	" " 29+42	"	72 "
" 34+08	" " 35+12	"	24 "
" 39+00	" " 40+00	"	12 "
ON RIGHT			
Sta 27+48	to Sta 27+72	length	24 ft
" 28+70	" " 29+42	"	72 "
" 34+08	" " 36+00	"	200 "
" 37+56	" " 40+00	"	74 "
Total this sheet 472 ft			

NEW CULVERTS REQUIRED

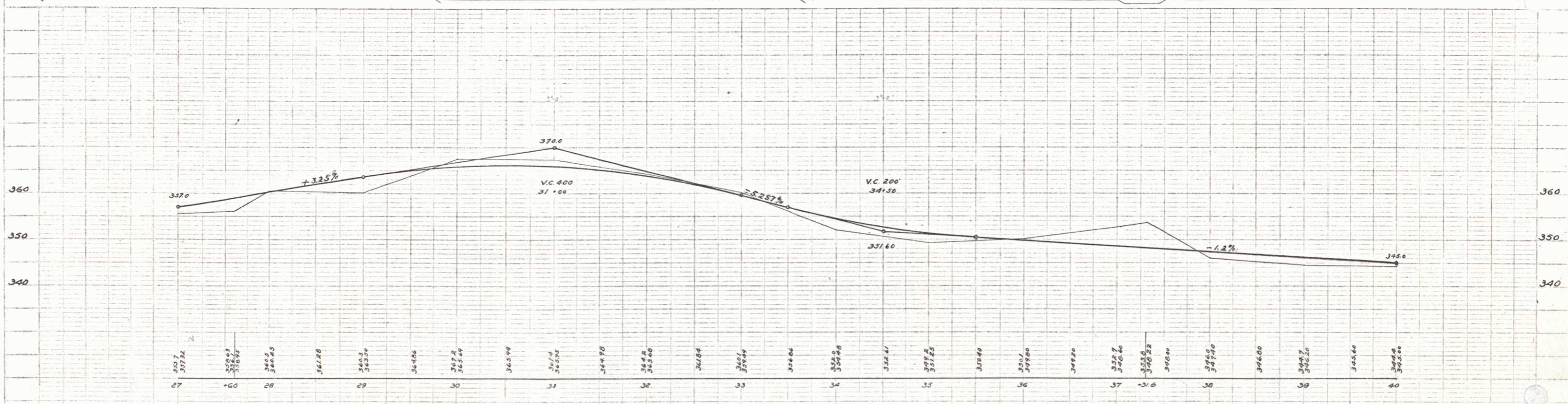
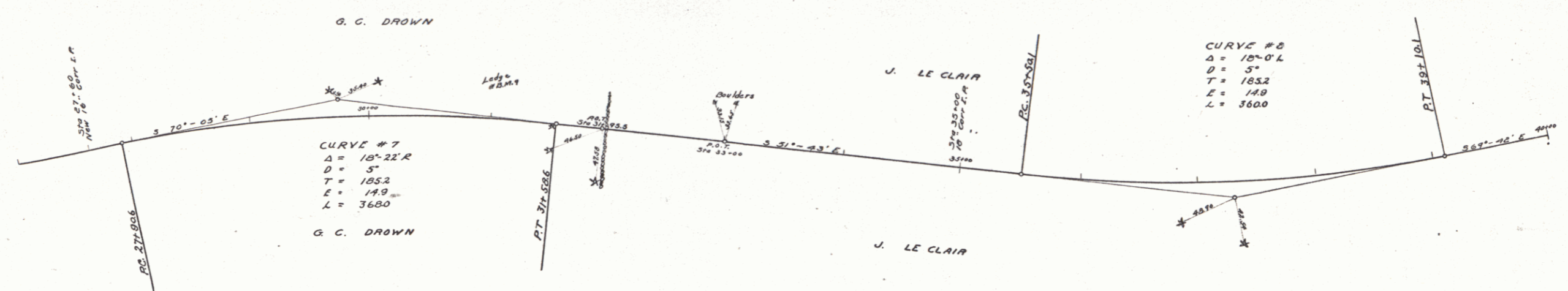
Sta 27+60	New 16" Corr Iron 20 ft
	1-2 1/2-3 Conc. Headwalls 1.3 Cu yds
Sta 33+00	24" Corr Iron 20 ft
	1-2 1/2-3 Conc. Headwalls 1.3 Cu yds

STANDARD UNDERDRAIN REQUIRED
Sta 37+50 to Sta 40+00 Length 250 ft

JOB NO.	STATE	AD. NO.	FISCAL YEAR	SHEET NO.	TOTAL SHEETS
7	VT	55A	1923	5	17

PLAN
DATE 1923
SCALE 1" = 40' HORIZ.
1" = 10' VERT.
G. C. DRAWN
G. L. KEENE
G. E. KEENE
G. C. KEENE

PROFILE
DATE 1923
SCALE 1" = 40' HORIZ.
1" = 10' VERT.
G. C. DRAWN
G. L. KEENE
G. E. KEENE
G. C. KEENE



B.M. 19 Tapel Rock Left of Sta 30+92 Elev 372.50

Series F. No. 55A Filed
Sheet 5 of 17

PLATE 5 - PLAN-PROFILE A.P. & S.A. & STANDARDS
NOTES & SPEC. OF NEW YORK

GUARD RAIL REQUIRED

On Left
 Sta 40+00 to Sta 40+12 length 12 ft
 " 42+00 " " 43+12 " 24 "
 " B 40+00 " " B 49+12 " 24 "

On Right
 Sta 40+00 to Sta 40+12 length 12 ft
 " 42+00 " " 43+12 " 24 "
 " B 40+00 " " B 49+12 " 24 "

Total this sheet 120'

NEW CULVERTS REQUIRED

Sta 40+00 14" Corf I.P. 20 ft
 1-2 1/2 - 3 Conc. Headwalls 1.0 cu yd

Sta 43+00 2x2 Concrete
 1-2-4 " 5.3 cu yds
 1-2 1/2 - 3 " 7.4 cu yds

Sta B 49+00 2x2 Concrete
 1-2-4 " 5.2 cu yds
 1-2 1/2 - 3 " 7.1 cu yds

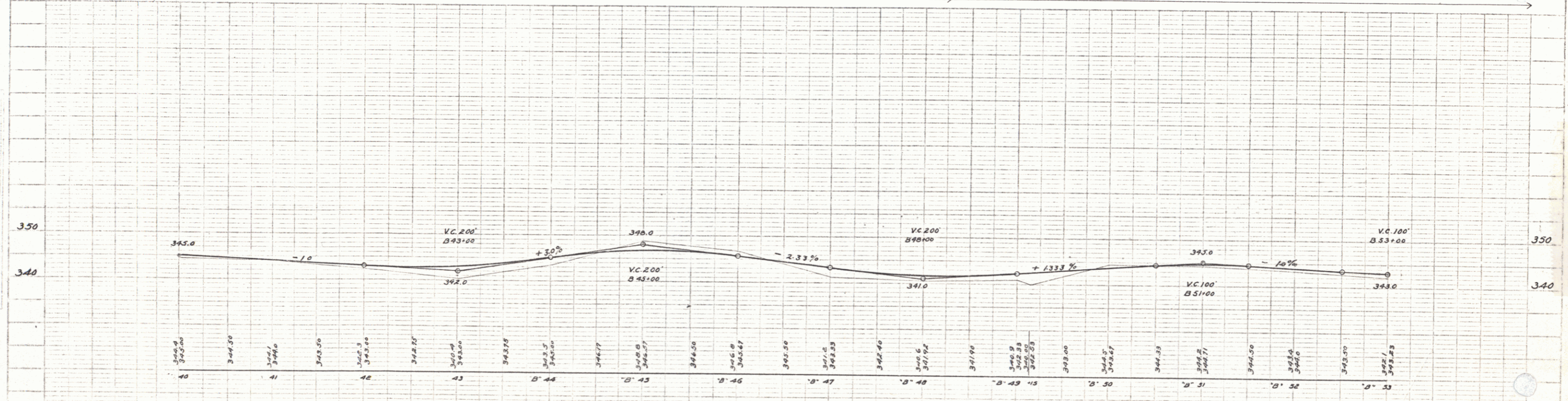
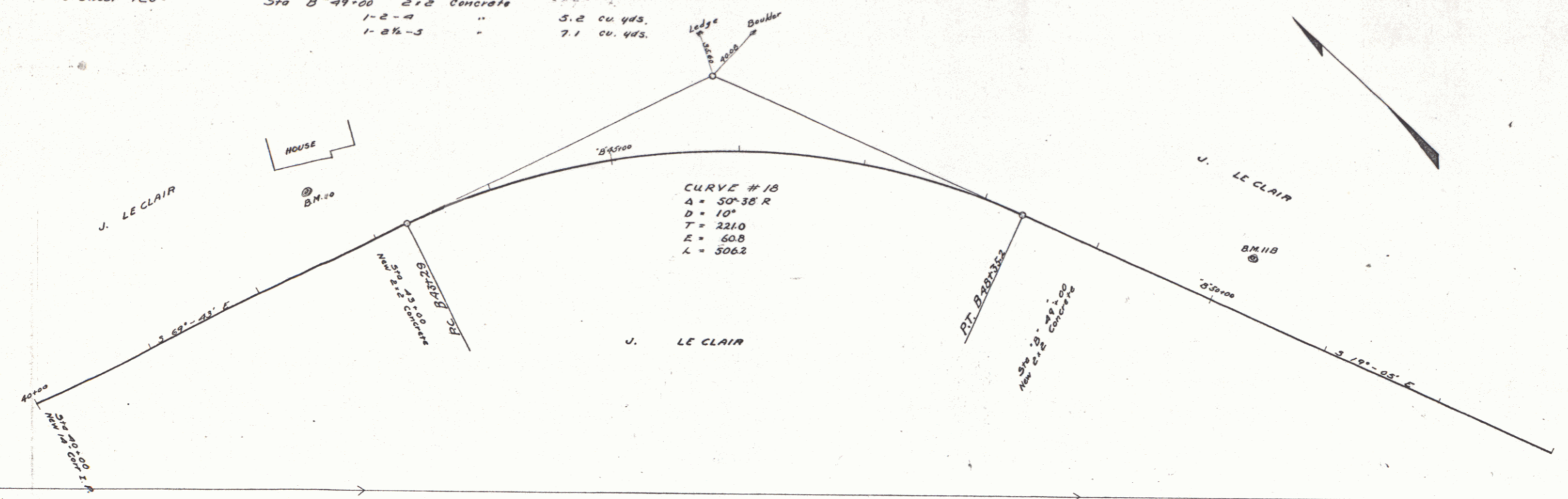
SUB BASE REQUIRED

Sta 40+00 to Sta B 30+00 length 1000 ft

FED. ROAD DIST. NO.	STATE	FED. AID PROJ. NO.	FISCAL YEAR	SHEET NO.	TOTAL SHEETS
7	VT	3-2-2	1923	6	17

PLAN
 WE WARDEN
 G.L. FIELD

PLAN
 WE WARDEN
 G.L. FIELD



B.M. #10 Spike in 50' Elm Left of Sta 42+70 Elev. 354.68
 B.M. #11B Spike in Two Cherry Left of Sta B 53+50 Elev. 346.97

Series F No. 55A Filed
 Sheet 6 of 17

GUARD RAIL REQUIRED
 On Left
 Sta B'54+00 to Sta B'53+12 length 24 ft
 - B'62+00 - B'63+12 = 24 -
 - B'64+00 - B'65+12 = 24 -
 On Right
 Sta B'54+00 to Sta B'53+12 length 24 ft
 - B'57+00 - B'60+20 = 320 -
 - B'62+00 - B'63+12 = 24 -
 - B'64+00 - B'65+12 = 24 -
 Total this sheet 464 -

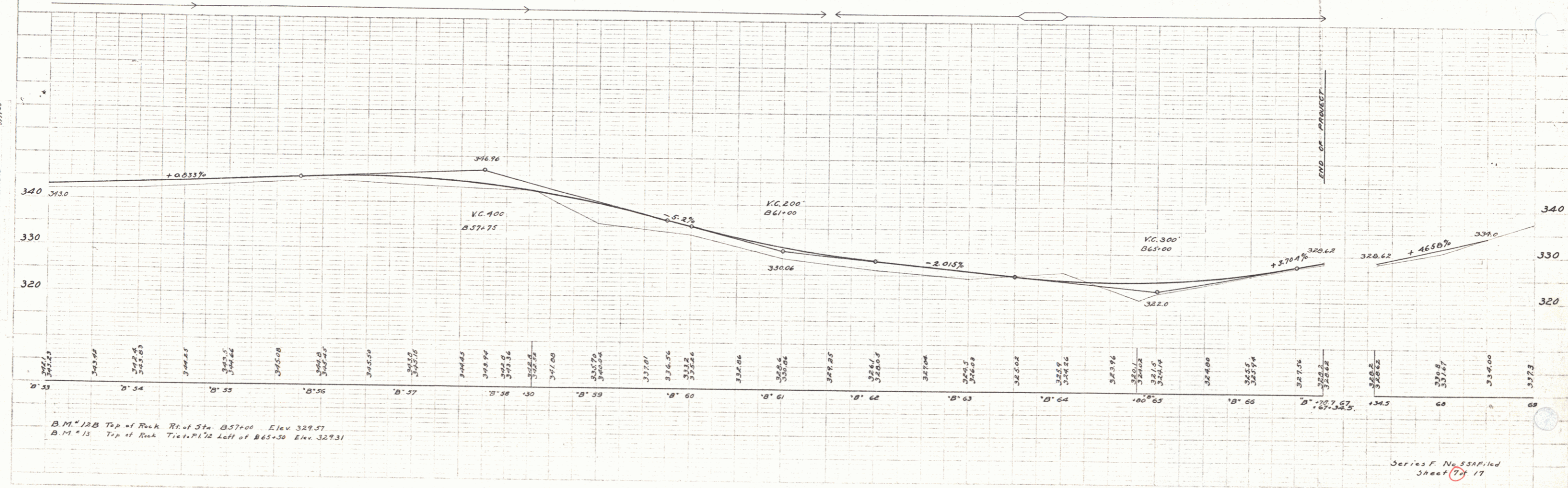
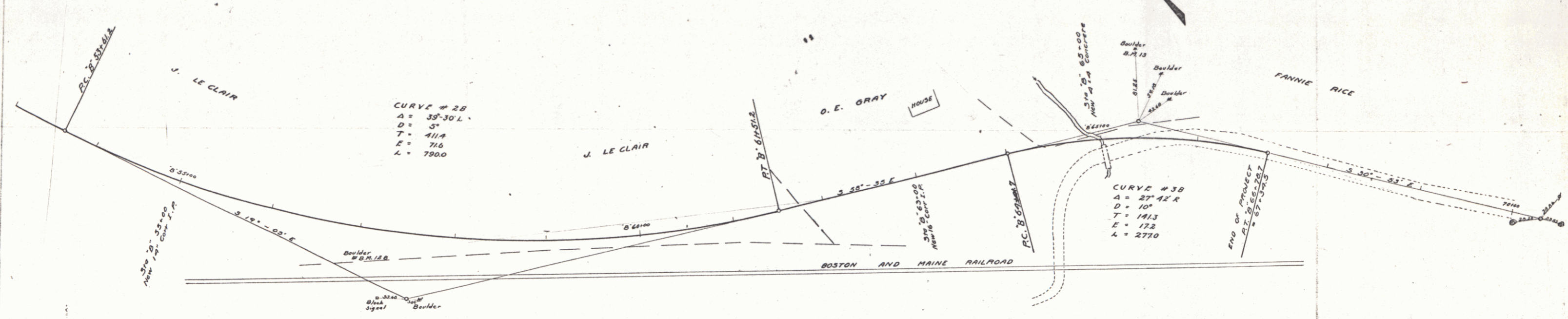
NEW CULVERTS REQUIRED
 Sta B'53+00 14" Corf Iron 20 ft
 1-2-3 Conc. Headwalls 1.0 cu yd
 Sta B'63+00 16" Corf Iron 20 ft
 1-2-3 Conc. Headwalls 1.3 cu yds
 Sta B'63+00 4x4 Concrete 9.7 cu yds
 1-2-3 " 13.7 cu yds

SUB BASE REQUIRED
 Sta B'61+50 to Sta B'66+70.7 length 520.7 ft

FED. ROAD DIST. NO.	STATE	FED. AID PROJ. NO.	FISCAL YEAR	SHEET NO.	TOTAL SHEETS
9	VT	3-5A	1923	7	17

PLAN
 W.E. WAINOR
 G.L. HUNTER
 1923

W.E. WAINOR
 G.L. HUNTER
 1923



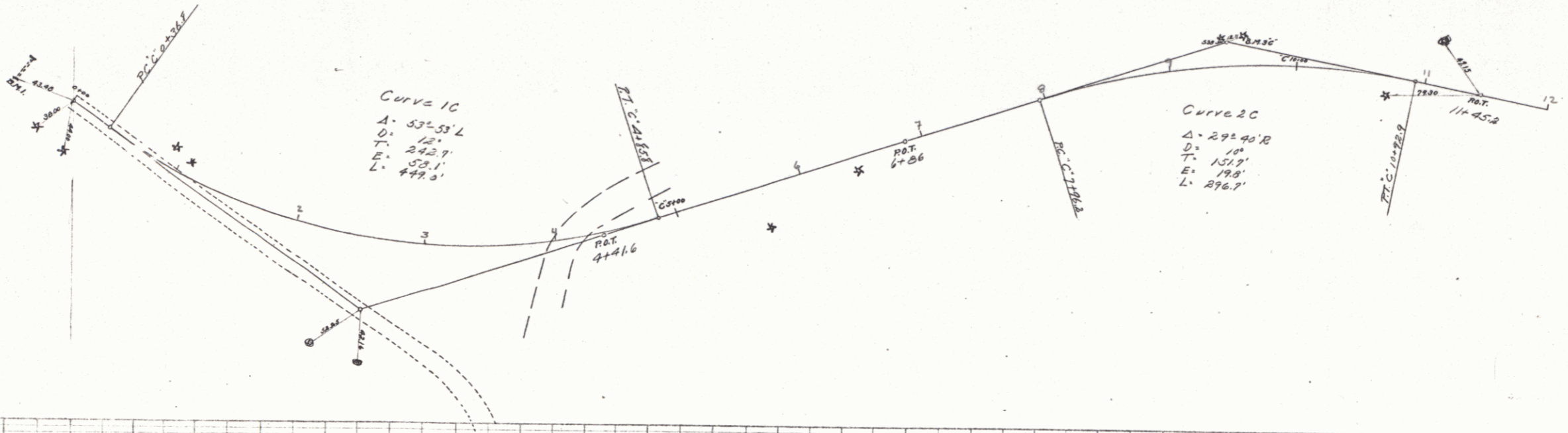
B.M. 12B Top of Rock Rt. of Sta. B'57+00 Elev. 329.57
 B.M. 13 Top of Rock Tr. of Sta. B'65+30 Elev. 329.31

Series F No. 55A Filed Sheet 7 of 17

DIST. ROAD	STATE	FED. AID	FISCAL	DATE	TOTAL
001	2	0.00	0.00	11-45-58	0

PLAN
 DATE: 11/15/58
 BY: [Signature]
 CHECKED: [Signature]

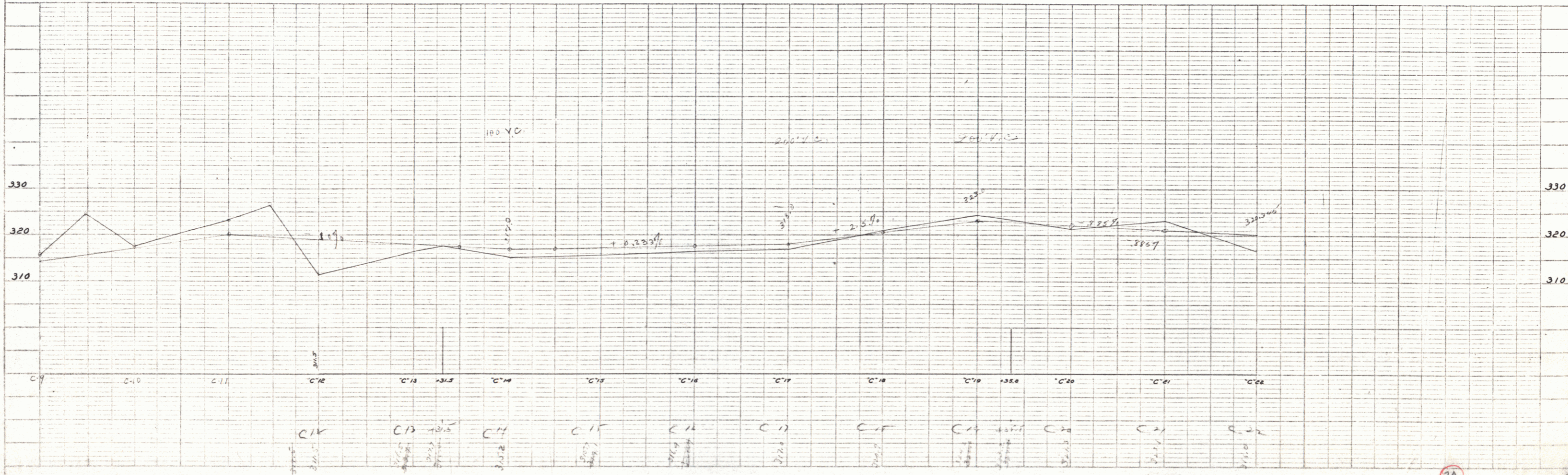
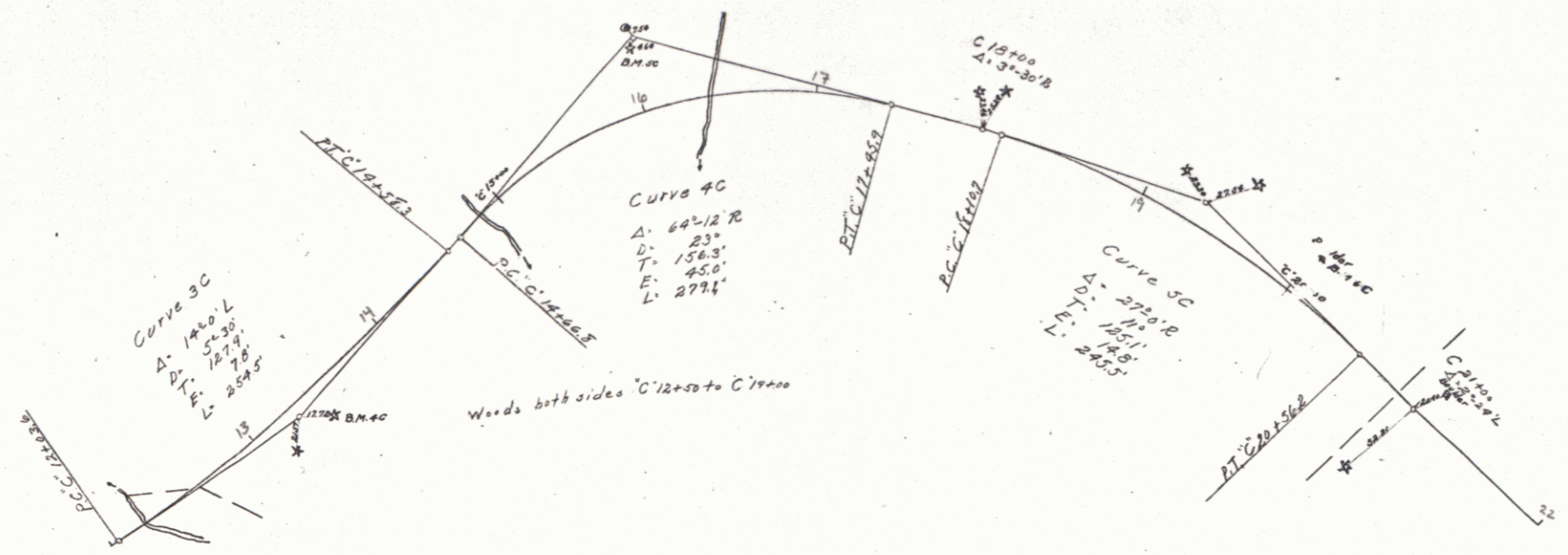
PROFILE
 DATE: 11/15/58
 BY: [Signature]
 CHECKED: [Signature]



FED. ROAD DIST. NO.	STATE	FED. AID PROJ. NO.	FISCAL YEAR	SHEET NO.	TOTAL SHEETS

PROJECT: [Handwritten]
 COUNTY: [Handwritten]
 DISTRICT: [Handwritten]
 SHEET NO.: [Handwritten]

PROJECT: [Handwritten]
 COUNTY: [Handwritten]
 DISTRICT: [Handwritten]
 SHEET NO.: [Handwritten]

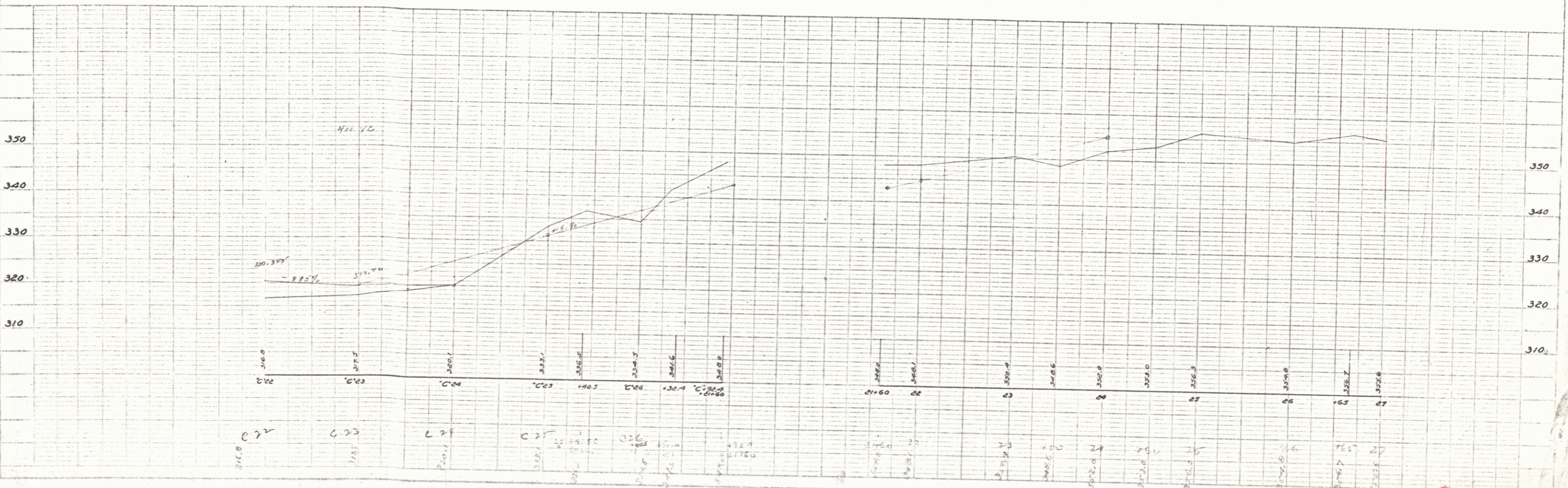
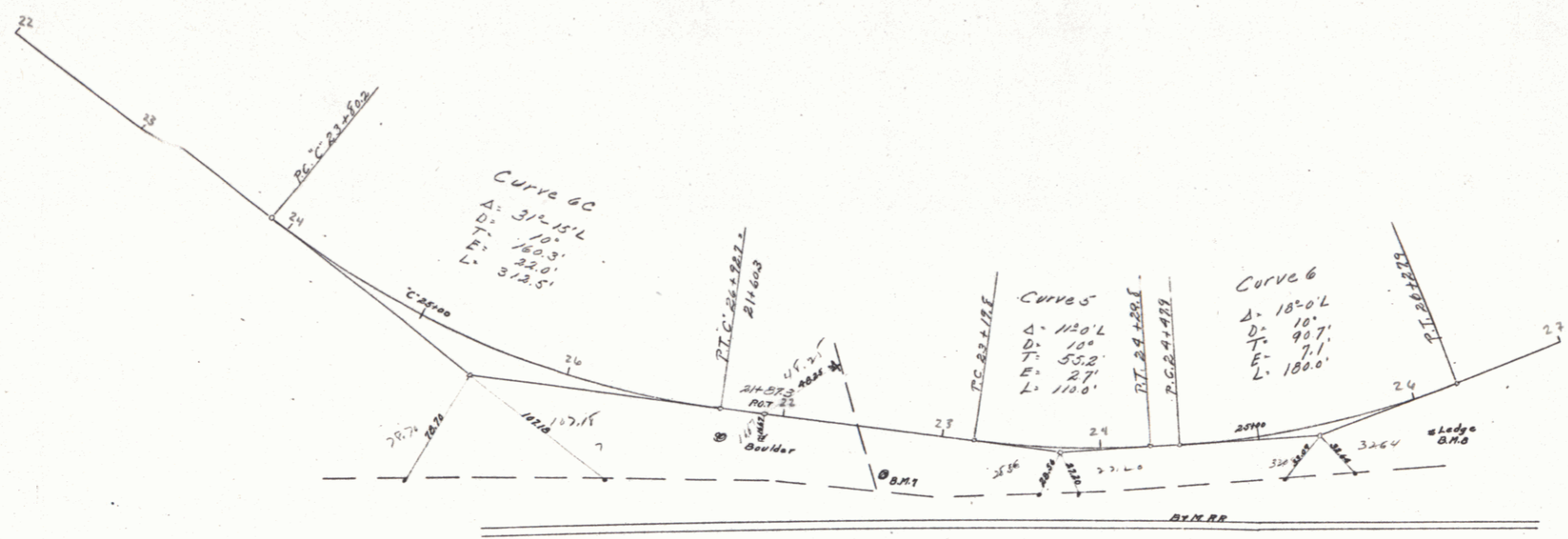


[Handwritten signature and notes]

FED. ROAD DIST. NO.	STATE	FED. AID PROJ. NO.	FISCAL YEAR	SHEET NO.	TOTAL SHEETS

PLAN	DATE	BY	CHECKED

PROFILE	DATE	BY	CHECKED

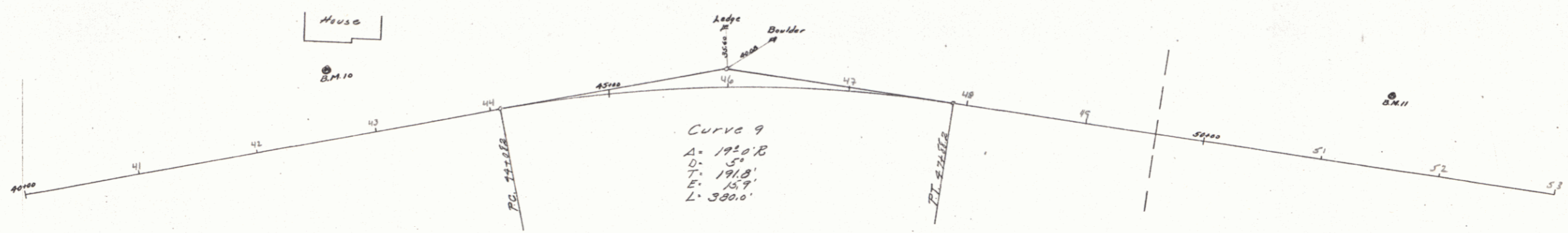


20

10

FED. ROAD DIST. NO.	STATE	FED. PROJ. NO.	LOCAL PROJ. NO.	SHEET NO.	TOTAL SHEETS

PLAN
 DATE: 11/23/53
 BY: G. E. BERRY
 CHECKED: G. E. BERRY
 SCALE: AS SHOWN
 SHEET NO. 26



CURVE 9
 A. 1920.8
 D. 54
 T. 1918.1
 E. 15.9
 L. 380.0

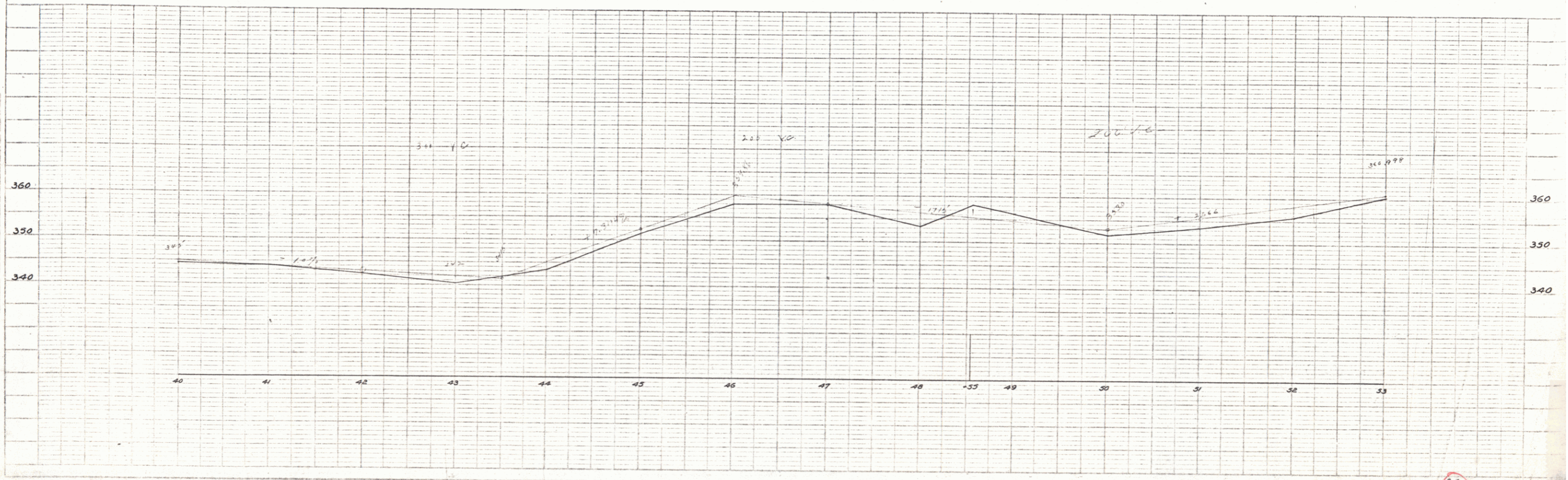


PLATE 1 - PLAN-PROFILE - 8" x 11" - G. E. BERRY
 REVISIONS: 1. 11/23/53

26

