

FED. ROAD DIST. NO.	STATE	FED. PROJ. NO.	FISCAL YEAR	SHEET NO.	TOTAL SHEETS

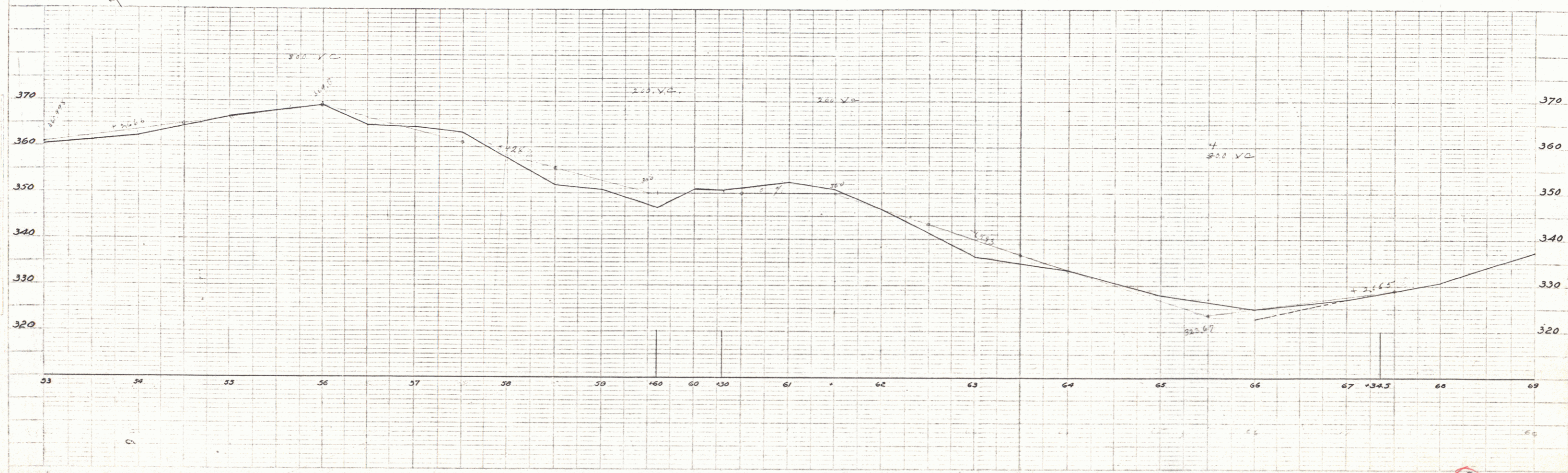
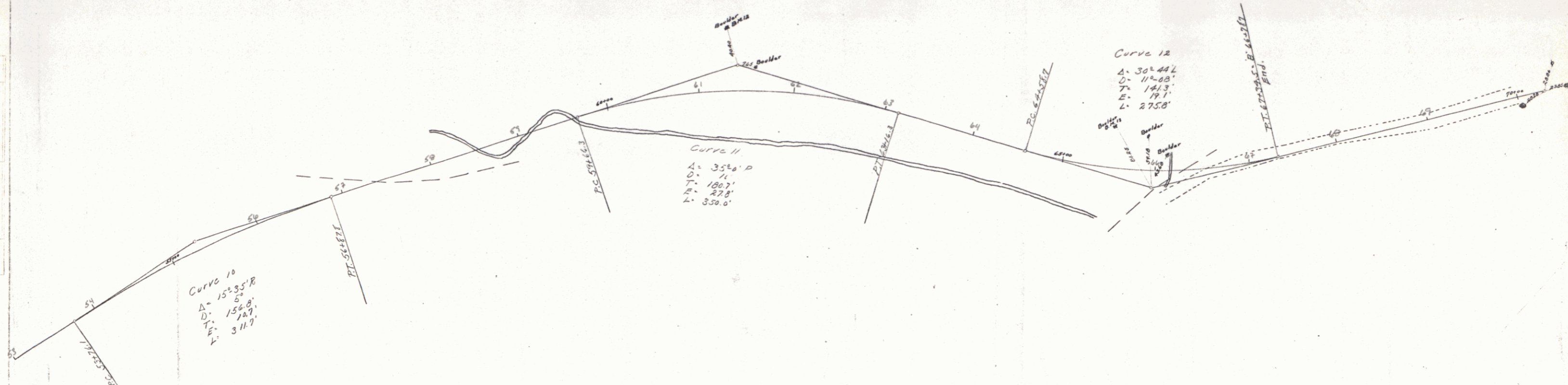


PLATE 10-11-10-11-12-13-14-15-16-17-18-19-20-21-22-23-24-25-26-27-28-29-30-31-32-33-34-35-36-37-38-39-40-41-42-43-44-45-46-47-48-49-50-51-52-53-54-55-56-57-58-59-60-61-62-63-64-65-66-67-68-69-70-71-72-73-74-75-76-77-78-79-80-81-82-83-84-85-86-87-88-89-90-91-92-93-94-95-96-97-98-99-100

20

Station 500' 0" 12