

GUARD RAIL REQUIRED
 On Left
 Sta 40+00 to Sta 40+12 length 12 ft
 " 42+00 " " 43+12 " 24 "
 " 48+00 " " 49+12 " 24 "
 On Right
 Sta 40+00 to Sta 40+12 length 12 ft
 " 42+00 " " 43+12 " 24 "
 " 48+00 " " 49+12 " 24 "
 Total this sheet 120'

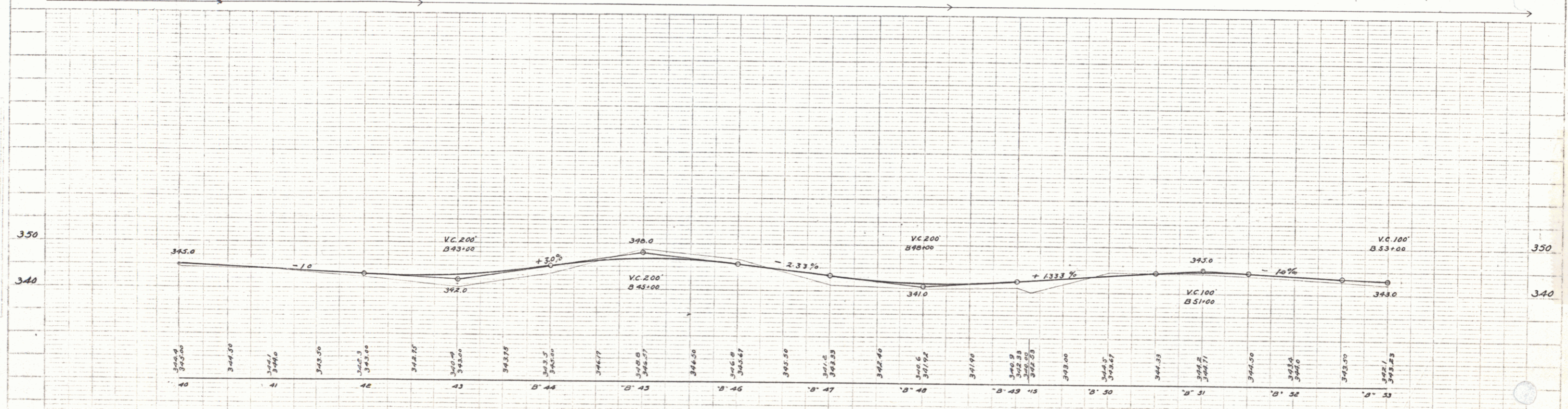
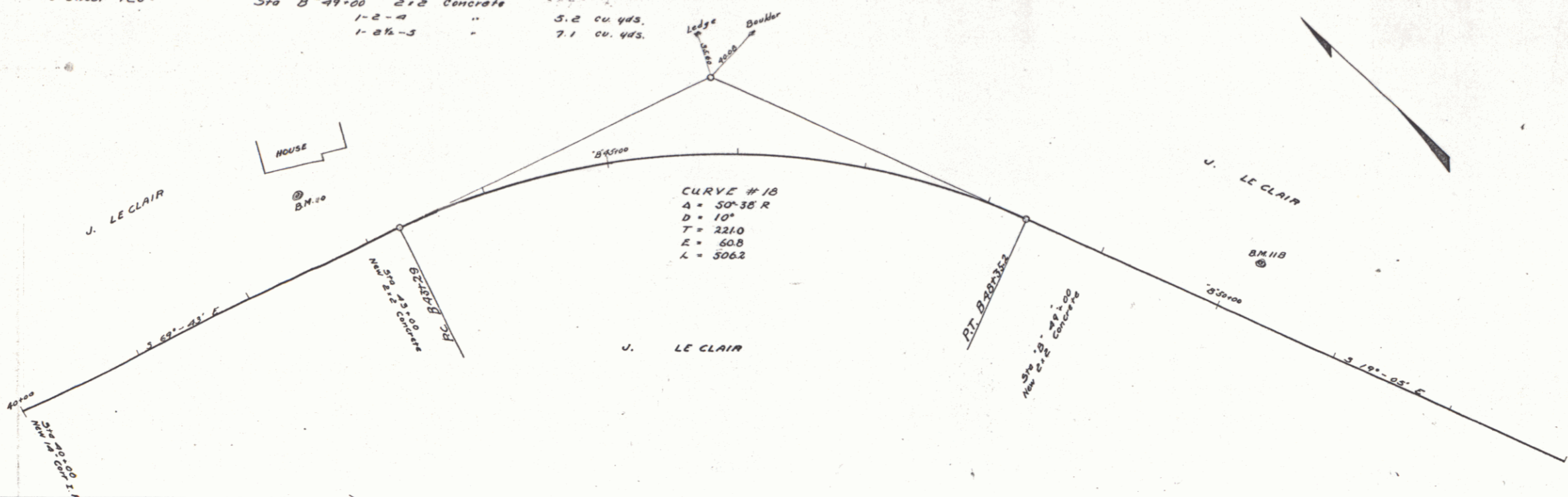
NEW CULVERTS REQUIRED
 Sta 40+00 14" Corf I.P. 20 ft
 1-2 1/2 - 3 Conc Headwalls 1.0 cu yd
 Sta 43+00 2x2 Concrete
 1-2-4 " 5.3 cu yds
 1-2 1/2 - 3 " 7.4 cu yds
 Sta 49+00 2x2 Concrete
 1-2-4 " 5.2 cu yds
 1-2 1/2 - 3 " 7.1 cu yds

SUB BASE REQUIRED
 STA 40+00 to Sta 50+00 length 1000 ft

FED. ROAD DIST. NO.	STATE	FED. AID PROJ. NO.	FISCAL YEAR	SHEET NO.	TOTAL SHEETS
7	VT	3-2-2	1923	6	17

PLAN
 WE. Leclair
 G.L. Field
 5/17/24

PLAN
 WE. Leclair
 G.L. Field
 5/17/24



B.M. #10 Spike in 50' Elm Left of Sta 42+70 Elev. 349.68
 B.M. #11B Spike in Two Cherry Left of Sta 53+50 Elev. 346.97

Series F No. 55A Filed
 Sheet 6 of 17