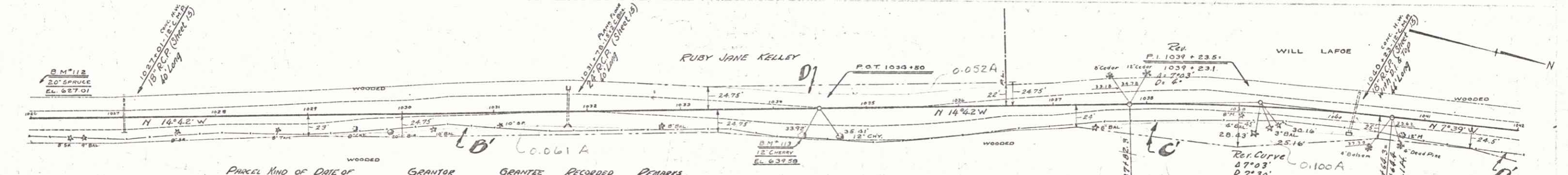
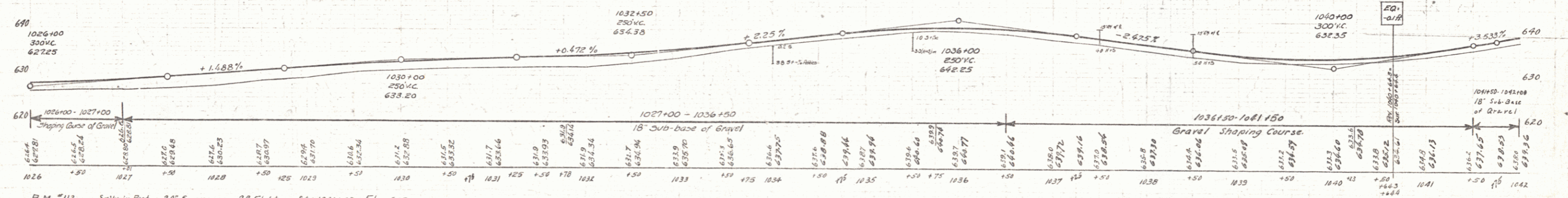


B.M. #111 Spike in Root 8" Balsam 17 Ft. Rt Sta. 1016+28 Elev. 625.51



Parcel	Kind of Date of Instrument	Date of Instrument	Grantor	Grantee	Recorded	Remarks
A-B-C-D	W.D.	7-15-33	RUBY JANE KELLEY	ST. OF N.	2 187	87-33 1019100
A-B-C-D	Q.C.C.	6-19-33	OLIN ALLARD	"	27 314	87-33 "



B.M. #112 Spike in Root 20" Spruce 28 Ft. Lt. Sta. 1026+08 Elev. 627.01  
 B.M. #113 Spike in Root 12" Cherry 20 Ft. Rt. Sta. 1034+33 Elev. 639.58