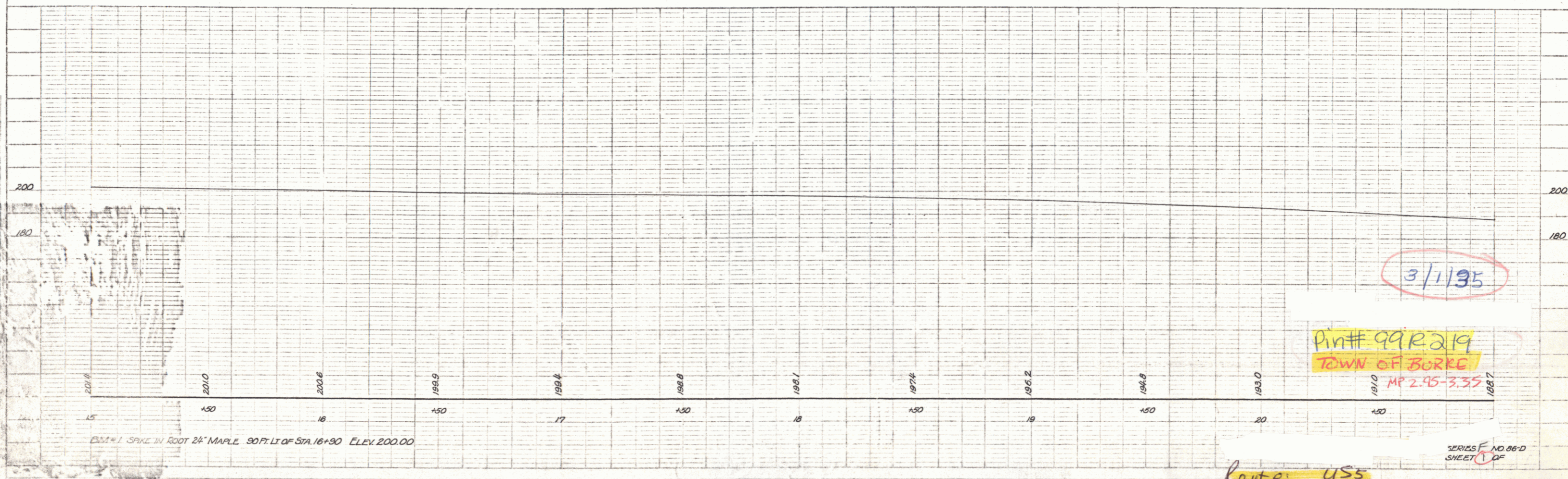
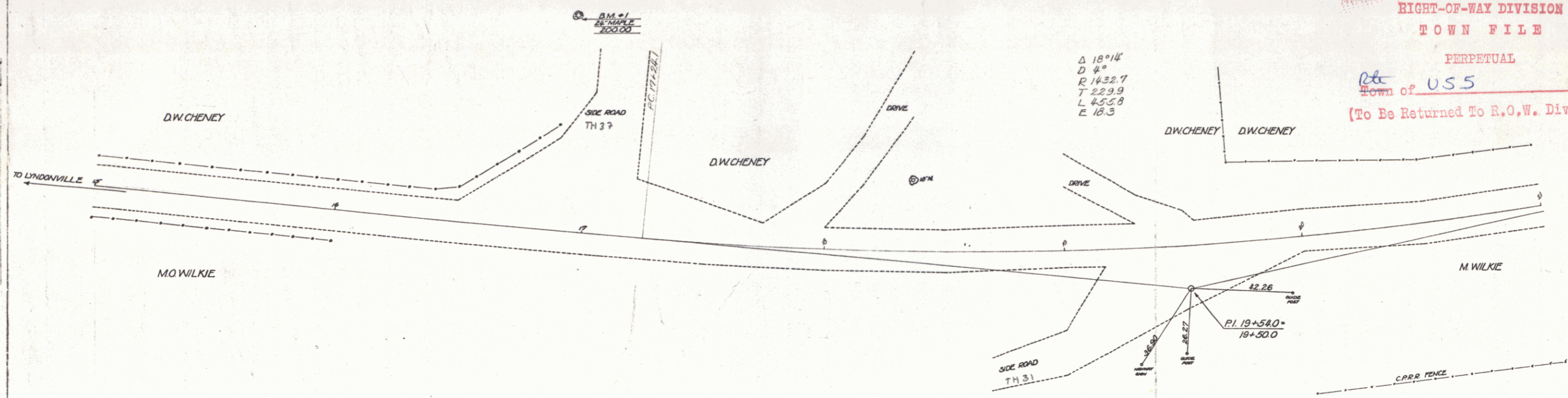


Abolished

RIGHT-OF-WAY DIVISION
TOWN FILE
PERPETUAL
etc
Town of USS
(To Be Returned To R.O.W. Division)



DATA: SPIKE IN ROOT 2 1/2" MAPLE 90 FT. LT. OF STA. 16+90 ELEV. 200.00

3/1/95

Pin# 992219
TOWN OF BORKE
MP 2.45-3.35

Route: USS
Project: F&D
DIST. # 9 PLANS