

NEW BRINE CONC. PIPE CULVERTS REQUIRED

Stations	DIAM	LONG	CONC.	C.R.	M. Steel	D. Locatn
835100-835114 LH	12"	14'	1.69	-	99"	1
835115	15"	28'	1.81	-	99"	1
835114-837166 LH	12"	232'	1.8	-	99"	1
843100	12"	24'	1.5	124'	157'	1

CEMENT MURBLE MASONRY WALL REQUIRED

Station - Station	A.O.L.	Vol.
846+13 - 847+00	R.	87 c.y.
43 - 43	P.O.T. 845+40.9	
	G Line	Δ 28'36" Lt

BRIDGE @ STA. 845+12

Sheet No.	SLB 20 No CR - 18' Span, Square.
	SLAG No Square Without Piles - 1-10'
	SB 2 - Details - S204, S220, S221
	SB 2A - S222 - S230
	SB 2B - S241

ESTIMATE QUANTITIES BRIDGE @ STA. 845+12

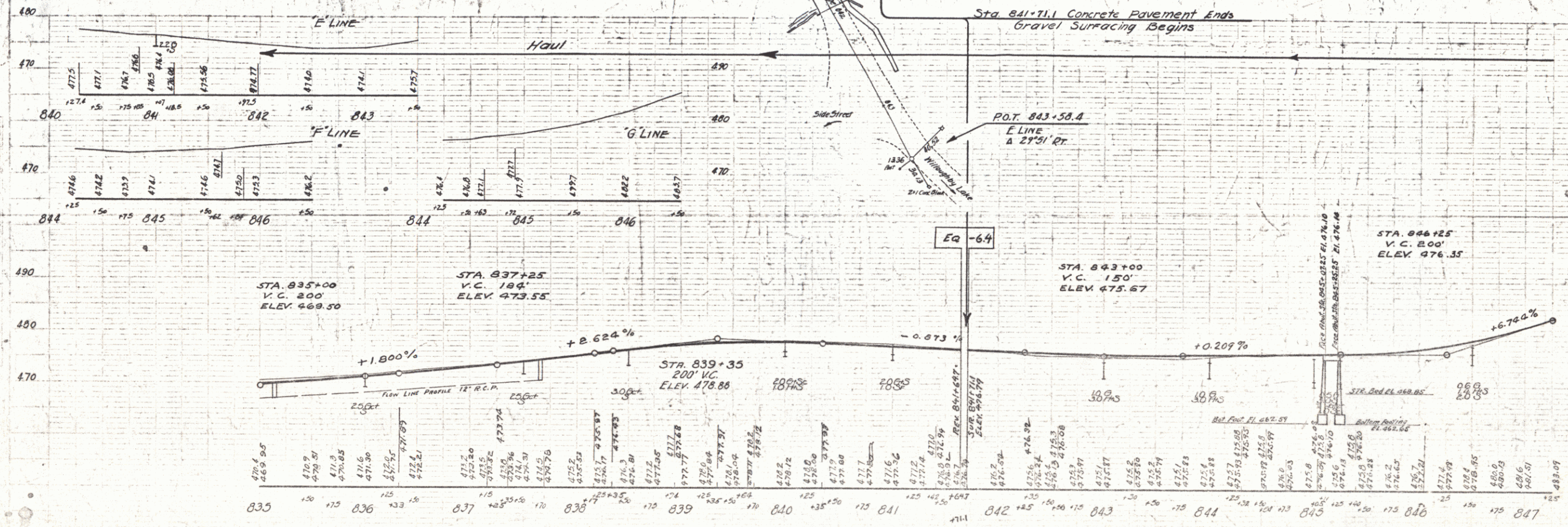
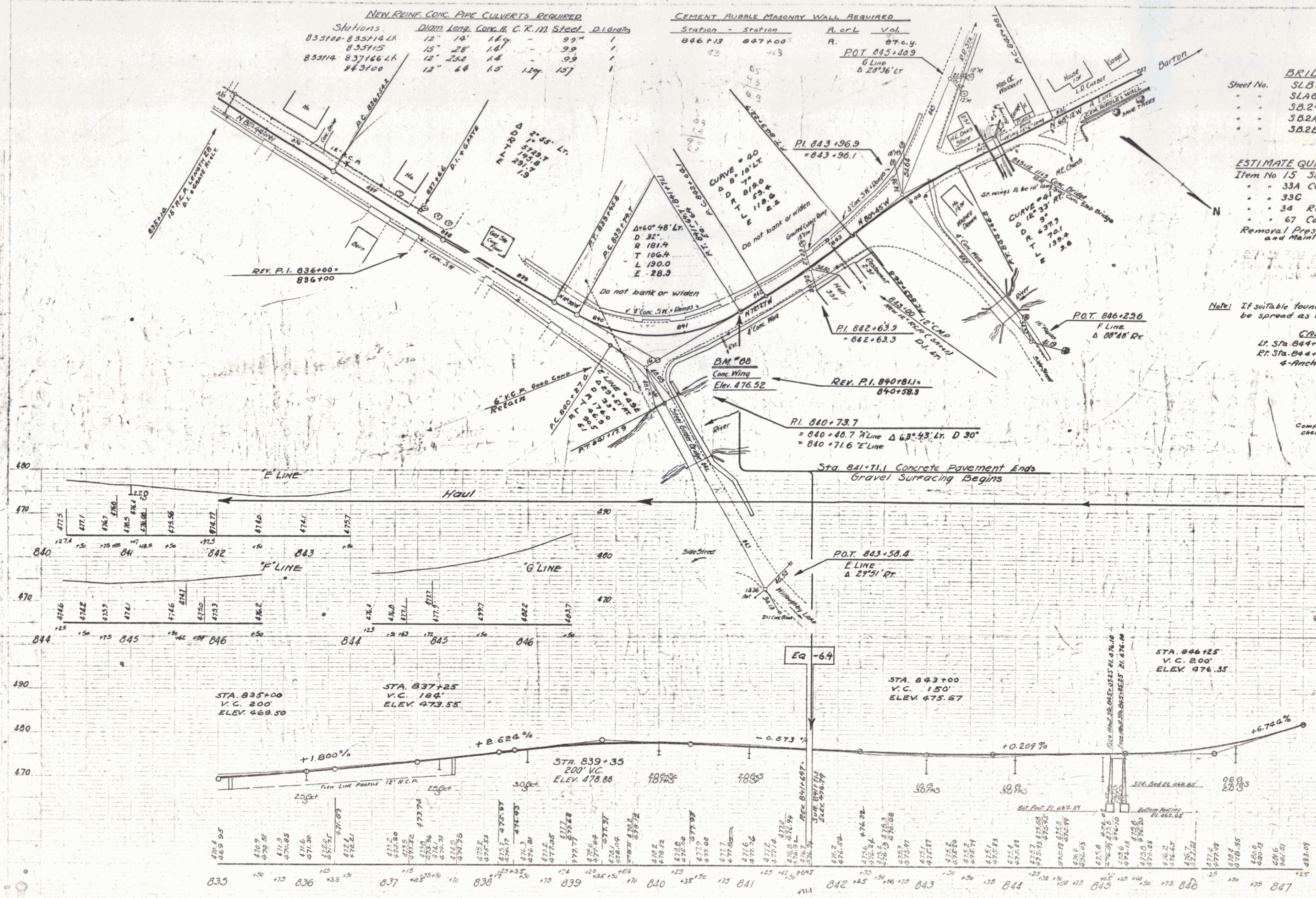
Item No 15	Struct. Excav.	291	Cu. Yds.
	33A Concrete	20.8	"
	33C " "	128	"
	34 Reinf. Steel	4370	Lbs.
	67 Cable Guard Rail	144	Lin. Ft.
	Removal Present Superstructure	1-Lump Sum	
	and Maintaining Traffic		

Note: If suitable foundation is not found, footings shall be spread as directed by the Engineer.

CABLE GUARD RAIL

Lt. Sta. 844+98 - Sta. 845+30	= 32.0 L. Ft.
Rt. Sta. 844+98 - Sta. 845+30	= 32.0 L. Ft.
4-Anchors @ 20'	= 80.0
Total	= 144.0 L. Ft.

Computed by: [Signature] checked by: [Signature]



CORRECT
A. D. [Signature]
BRIDGE ENGINEER