

WOOD GUIDE RAIL REQUIRED

Qty	Left	Right
765+91	1	2
776+82		

WOOD GUIDE POSTS REQUIRED

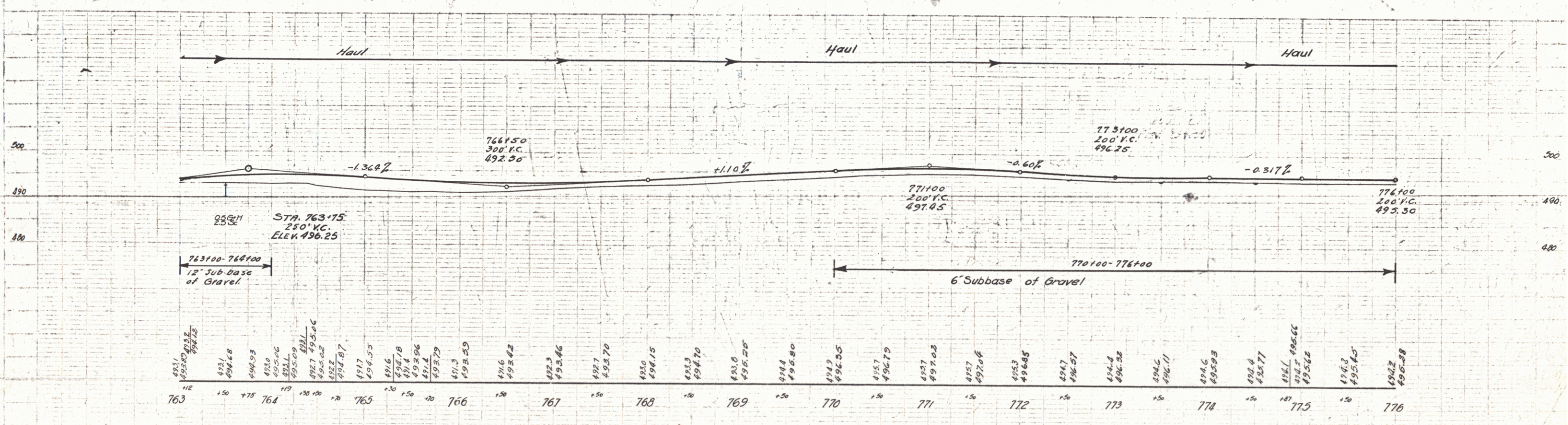
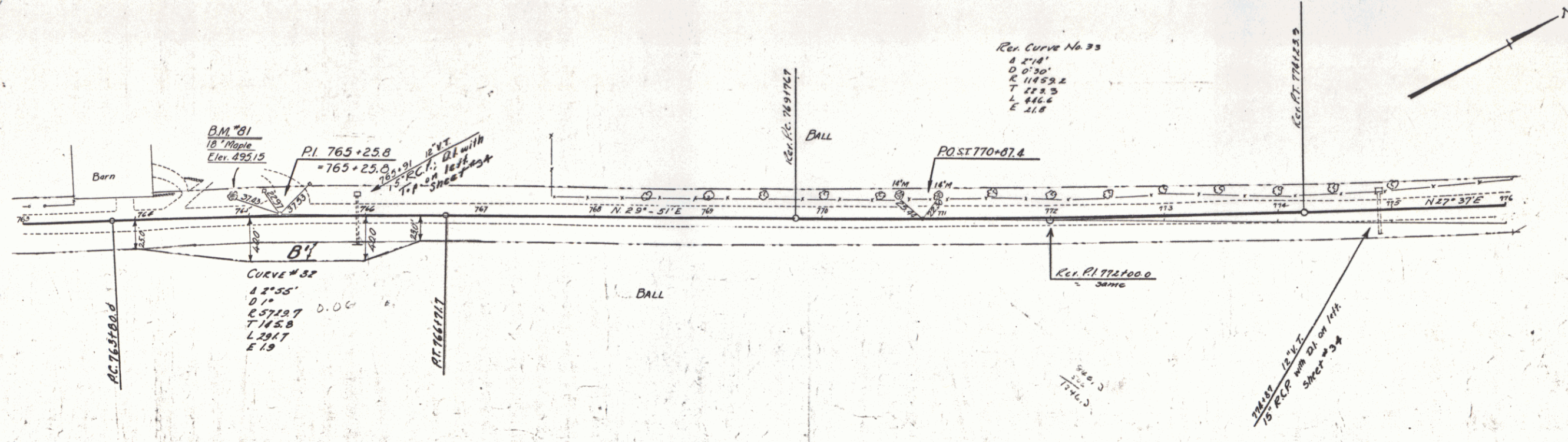
Sta	Left	Right
765+91	1	2
774+87	2	2

NEW REINF. CONC. PIPE CULVERTS REQUIRED

Station	Diam	Length	Conc. R	C.R.P. Steel
765+91	15"	40'	1.5cy	1.5cy
774+87	15"	40'	1.4cy	1.1cy

Partial	Kind of Instrument	Digits of Instrument	Grantor	Grantee	Recorded Book	Recorded Page	Remarks
B'	G.C.D.	5-33-32	C.O. & Edw. Ball	Stofft	100	111	5-30-32

66C 1931 26 11a



Sta	Elev	Sta	Elev	Sta	Elev	Sta	Elev	Sta	Elev	Sta	Elev	Sta	Elev	Sta	Elev	Sta	Elev	Sta	Elev								
763	494.16	764	494.03	765	494.55	766	493.55	767	493.46	768	494.15	769	493.25	770	492.55	771	492.75	772	492.85	773	492.82	774	492.81	775	492.77	776	492.88

27