

WOOD GUARD RAIL REQUIRED

Sta	Left	Right
733+50	24'	24'

WOOD GUIDE POSTS REQUIRED

Sta	Left	Right
733+50	2	2

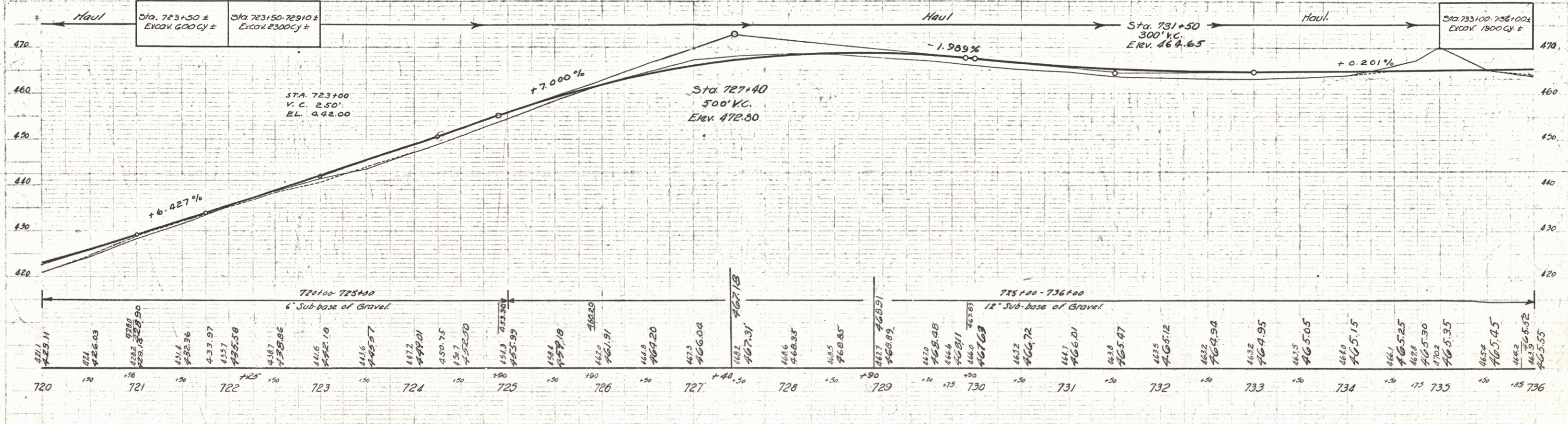
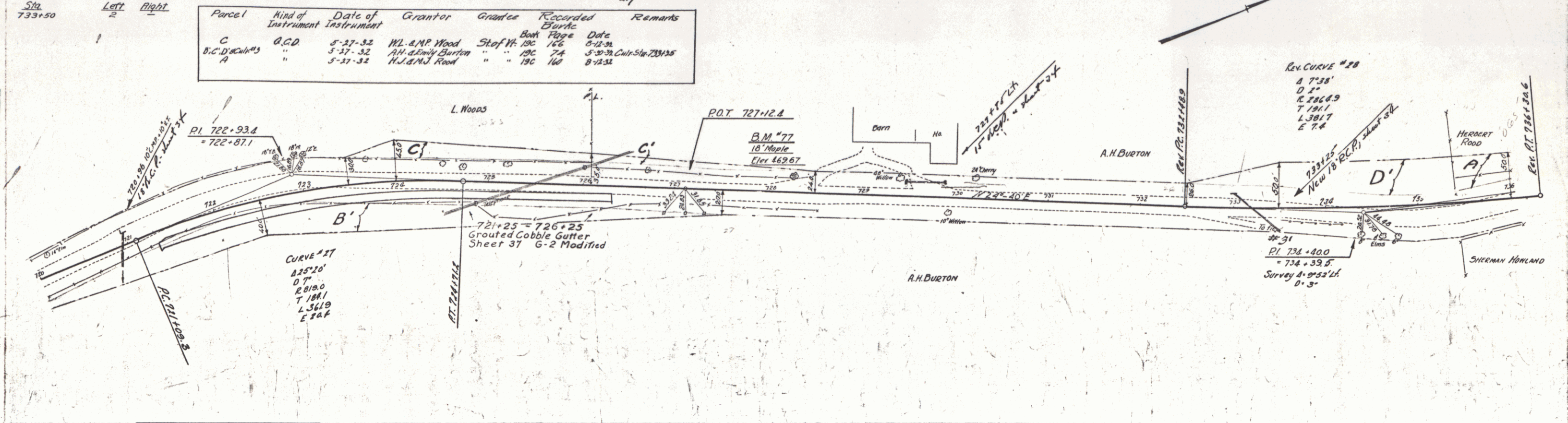
NEW REIN. CONC. PIPE CULVERTS REQUIRED

Station	Diam	Length	Conc. R.	Steel	C.R.M.
733+25	18"	40'	-	-	14.7y.
722+96	18"	60'	1.8cy.	75'	-
727+74.15'	15"	42'	-	-	2.7

GROUTED COBBLE GUTTER REQUIRED

Stations	Width	Area
721+25 - 726+25	8'-0"	538 sq. yds.

STATE OF ILLINOIS
 DISTRICT OF SOUTHWESTERN ILLINOIS
 COUNTY OF JEFFERSON
 No. 06 C. 1931 E. 3 110



Station	Elevation
720	421.11
721	422.03
722	423.97
723	425.91
724	427.85
725	429.79
726	431.73
727	433.67
728	435.61
729	437.55
730	439.49
731	441.43
732	443.37
733	445.31
734	447.25
735	449.19
736	451.13

SERIES F No. 06 C
 SHEET 23 OF 110