

WOOD GUIDE POSTS REQUIRED

Curve Sta	Left	Right
676+71		
680+29		
685+39		

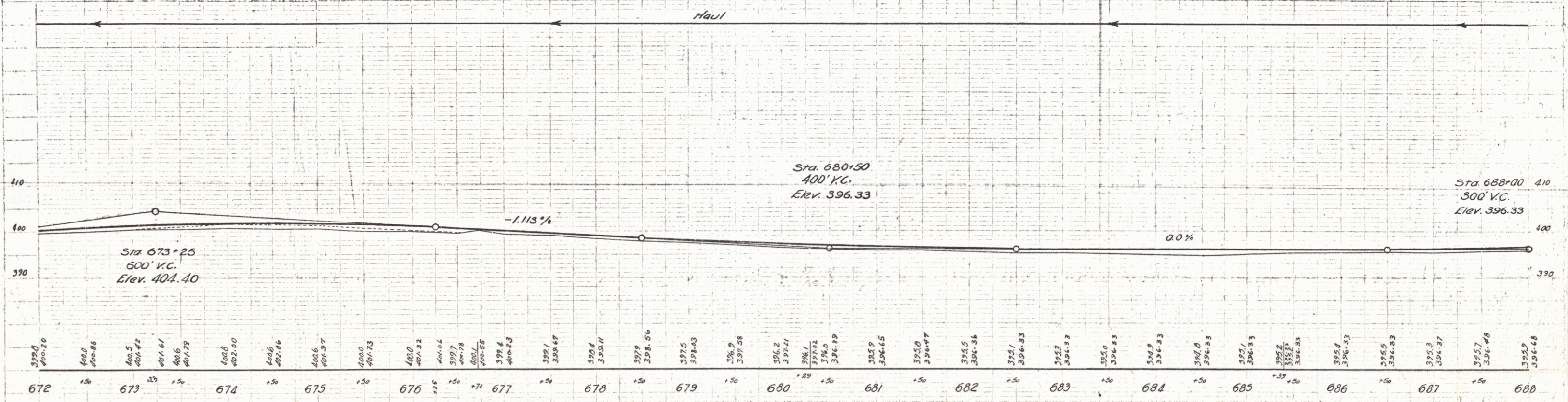
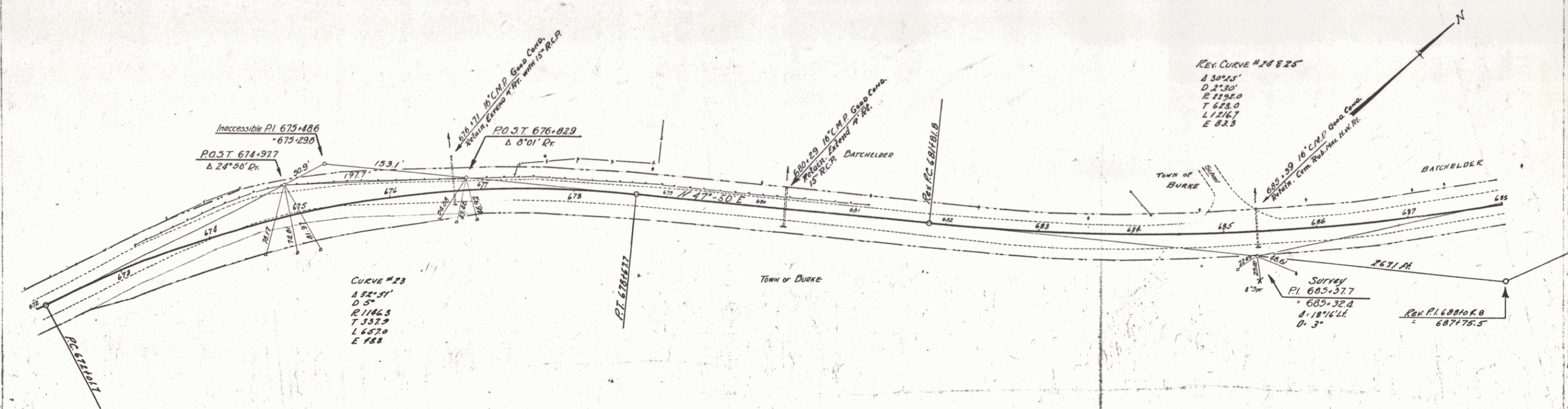
NEW PUMP CONC. PIPE CULVERTS REQUIRED

Sta	Diam	Len	Comp.	C.R.M.	Steel
676+71	15"	4'		1.21	

CURVED GALV. METAL PIPES RETAINED

Sta	Diam	Com.	Pub. Wgt.
683+29	16"		1.5

STATE OF ILLINOIS
 06C 1931 20 110



SERIES F. NO. 06C
 SHEET 20 OF 110