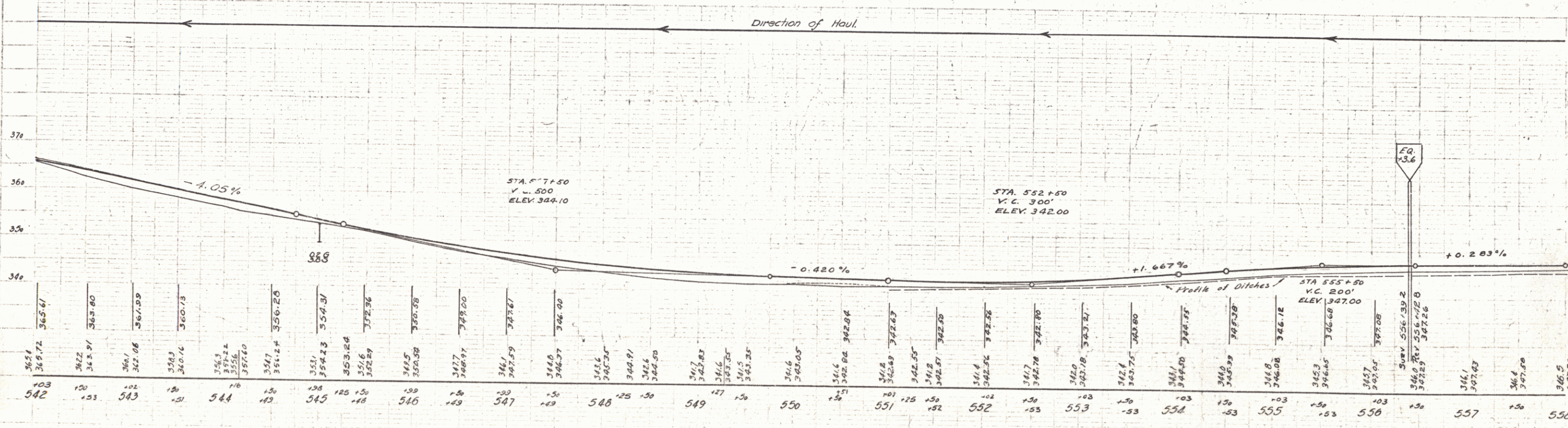
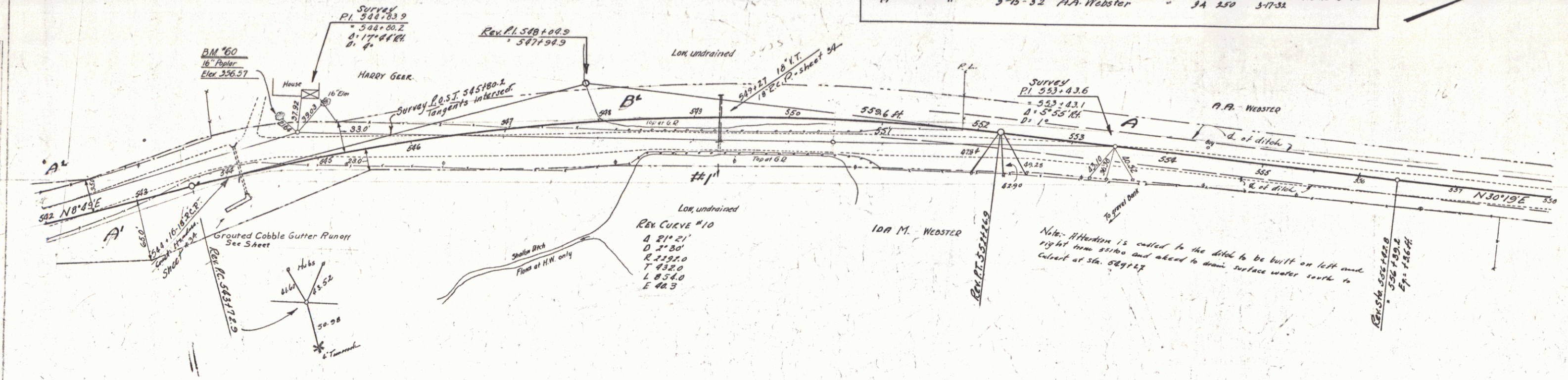


WOOD GUIDE RAIL REQUIRED		CABLE GUARD RAIL REQUIRED			NEW POINT CONC. PIPE GUARDERS REQUIRED		
City Sta	Left Right	Stations	Lang. Cont.	Req. Leng.	Sta	Diam. Leng.	Cont. H. Conc. G. Steel
549+27	24'	541+00-541+46.81	246' 40"	286'	541+14	18" 45'	100y.
		541+27	76' 40"	136'	549+27	18" 45'	44'

WOOD GUIDE POSTS REQUIRED	
Sta	Left Right
544+16	R

GROUTED CABLE GUTTER REQUIRED					
Stations	Width	Area			
544+16 cul. outlet	3'-0"	10 sq. yds.			

Parcel	Kind of Instrument	Date of Instrument	Grantor	Grantee	Recorded Location	Remarks
A & B	G.C.D.	3-15-32	Harry & Vera Geer	Stef. A	3A 257	5-1-32
A & C	"	3-15-32	Harry & Vera Geer	Stef. A	3A 257-9	5-1-32
A	"	3-15-32	A.A. Webster	"	3A 250	5-17-32



SERIES F. N° 86C  
SHEET 11 of 11