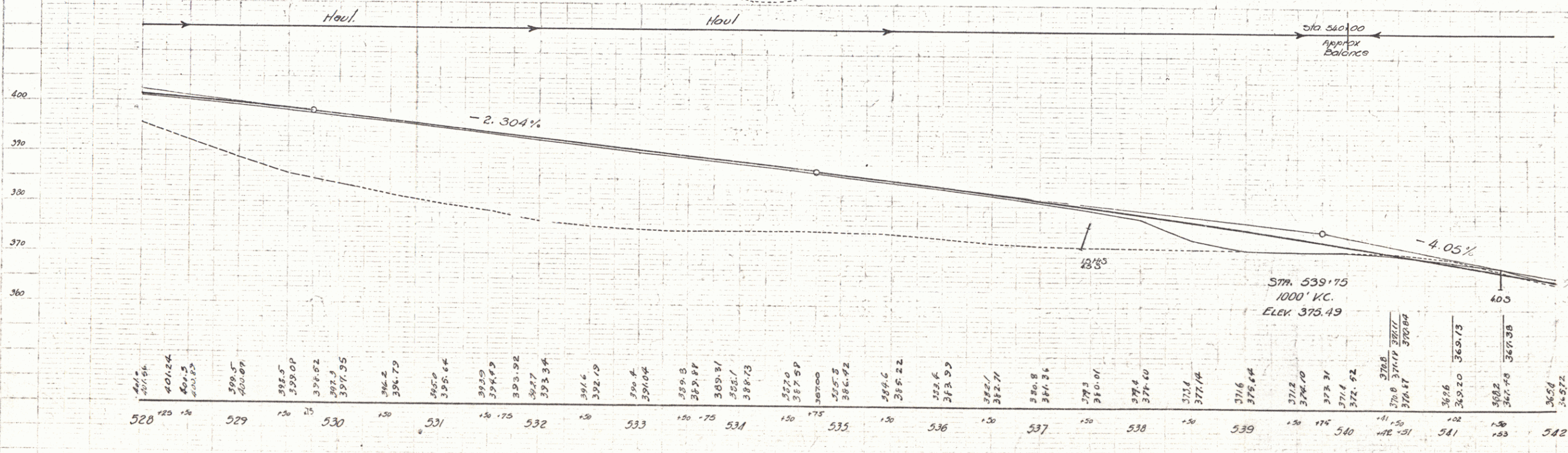
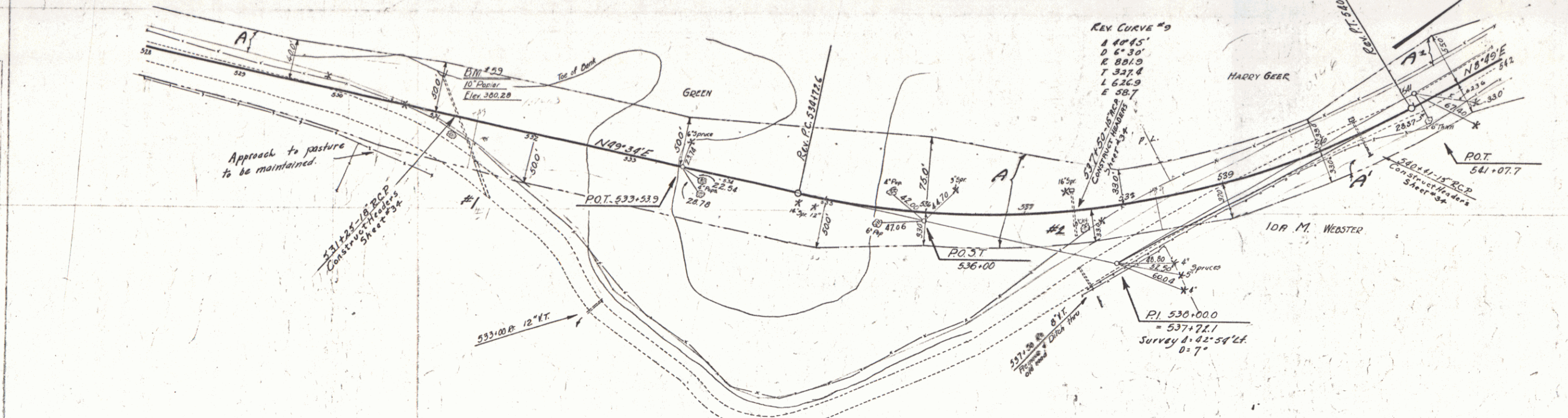


WOOD GUARD RAIL REQUIRED				CABLE GUARD RAIL REQUIRED				NEW REIN. CONC. PIPE CULVERTS REQUIRED						
Culv. Sta.	Left	Right	Stations	Length	Const.	By	Length	Sta.	Diam.	Length	Const.	Steel	C.R. No.	
537+50	1	-	528+40-531+80 R/L	40'	40'	40'	531+75	18"	18"	111	18"	111	18"	111
540+41	1	-	528+00-532+00 L/R	392'	40'	432'	537+50	18"	18"	111	18"	111	18"	111
			540+30-542+00 R/L	170'	40'	210'	540+41							

Parcel	Kind of Instrument	Date of Instrument	Grantor	Grantee	Recorded	Remarks
A.C. 1/4 Sec 14 E	Q.C.D.	4-1-32	W.H. & F.D. Greene	State	Book Page	6-11-32, Cully Sta. 531+50-537+50
"	"	5-15-32	Asst. In. Hubler & W. H. M. M.	State	3A 257-9	5-17-32
"	"	8-15-32	Harry Von Geer	State	3A 251	3-17-32

STATE OF ILLINOIS  
 COUNTY OF COOK  
 RECORD BOOK NO. 86 C  
 PAGE 10 OF 10



Sta.	Elev.	Sta.	Elev.	Sta.	Elev.	Sta.	Elev.	Sta.	Elev.	Sta.	Elev.	Sta.	Elev.
520	392.56	529	386.79	530	382.5	531	378.64	532	375.34	533	372.19	534	368.6
521	391.24	528	385.09	529	380.82	530	376.62	531	373.34	532	369.6	533	365.6
522	389.83	527	383.68	528	379.41	529	375.21	530	371.91	531	367.91	532	363.91
523	388.42	526	382.27	527	378.00	528	373.80	529	370.50	530	366.50	531	362.50
524	387.01	525	380.86	526	376.59	527	372.39	528	369.09	529	365.09	530	361.09
525	385.60	524	379.45	525	375.18	526	370.98	527	367.68	528	363.68	529	359.68
526	384.19	523	378.04	524	373.77	525	369.57	526	366.27	527	362.27	528	358.27
527	382.78	522	376.63	523	372.36	524	368.16	525	364.86	526	360.86	527	356.86
528	381.37	521	375.22	522	370.95	523	366.75	524	363.45	525	359.45	526	355.45
529	379.96	520	373.81	521	369.54	522	365.34	523	362.04	524	358.04	525	354.04
530	378.55	519	372.40	520	368.13	521	363.93	522	360.63	523	356.63	524	352.63
531	377.14	518	370.99	519	366.72	520	362.52	521	359.22	522	355.22	523	351.22
532	375.73	517	369.58	518	365.31	519	361.11	520	357.81	521	353.81	522	349.81
533	374.32	516	368.17	517	363.90	518	359.70	519	356.40	520	352.40	521	348.40
534	372.91	515	366.76	516	362.49	517	358.29	518	354.99	519	350.99	520	346.99
535	371.50	514	365.35	515	361.08	516	356.88	517	353.58	518	349.58	519	345.58
536	370.09	513	363.94	514	359.67	515	355.47	516	352.17	517	348.17	518	344.17
537	368.68	512	362.53	513	358.26	514	354.06	515	350.76	516	346.76	517	342.76
538	367.27	511	361.12	512	356.85	513	352.65	514	349.35	515	345.35	516	341.35
539	365.86	510	359.71	511	355.44	512	351.24	513	347.94	514	343.94	515	339.94
540	364.45	509	358.30	510	354.03	511	349.83	512	346.53	513	342.53	514	338.53
541	363.04	508	356.89	509	352.62	510	348.42	511	345.12	512	341.12	513	337.12
542	361.63	507	355.48	508	351.21	509	347.01	510	343.71	511	339.71	512	335.71

SERIES F. NO. 86 C  
 SHEET 10 OF 110

10