

WOOD GUIDED RAIL REQUIRED

Sta.	Left	Right
465+33	2'	

WOOD GUIDE POSTS REQUIRED

Sta.	Left	Right
465+33	2	

CABLE GUARD RAIL REQUIRED

Stations	Length	Const. By	Length
458+50-459+54.25	104' 40"	144'	
458+25-458+107.75	72' 40"	112'	
460+92-461+08.75	96' 40"	136'	
461+60-462+69.75	109' 40"	144'	

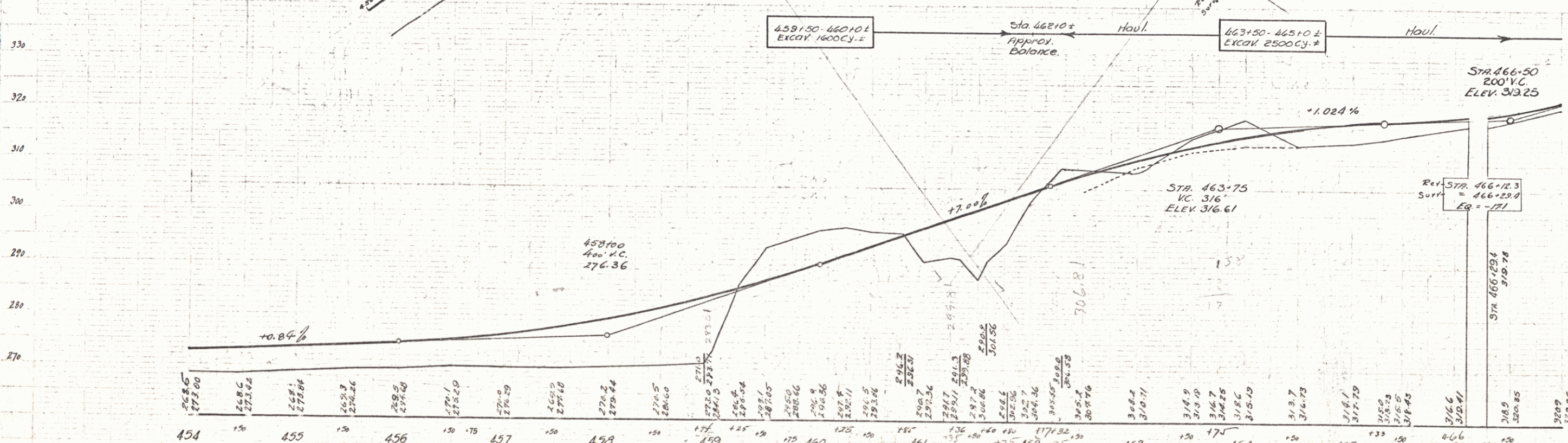
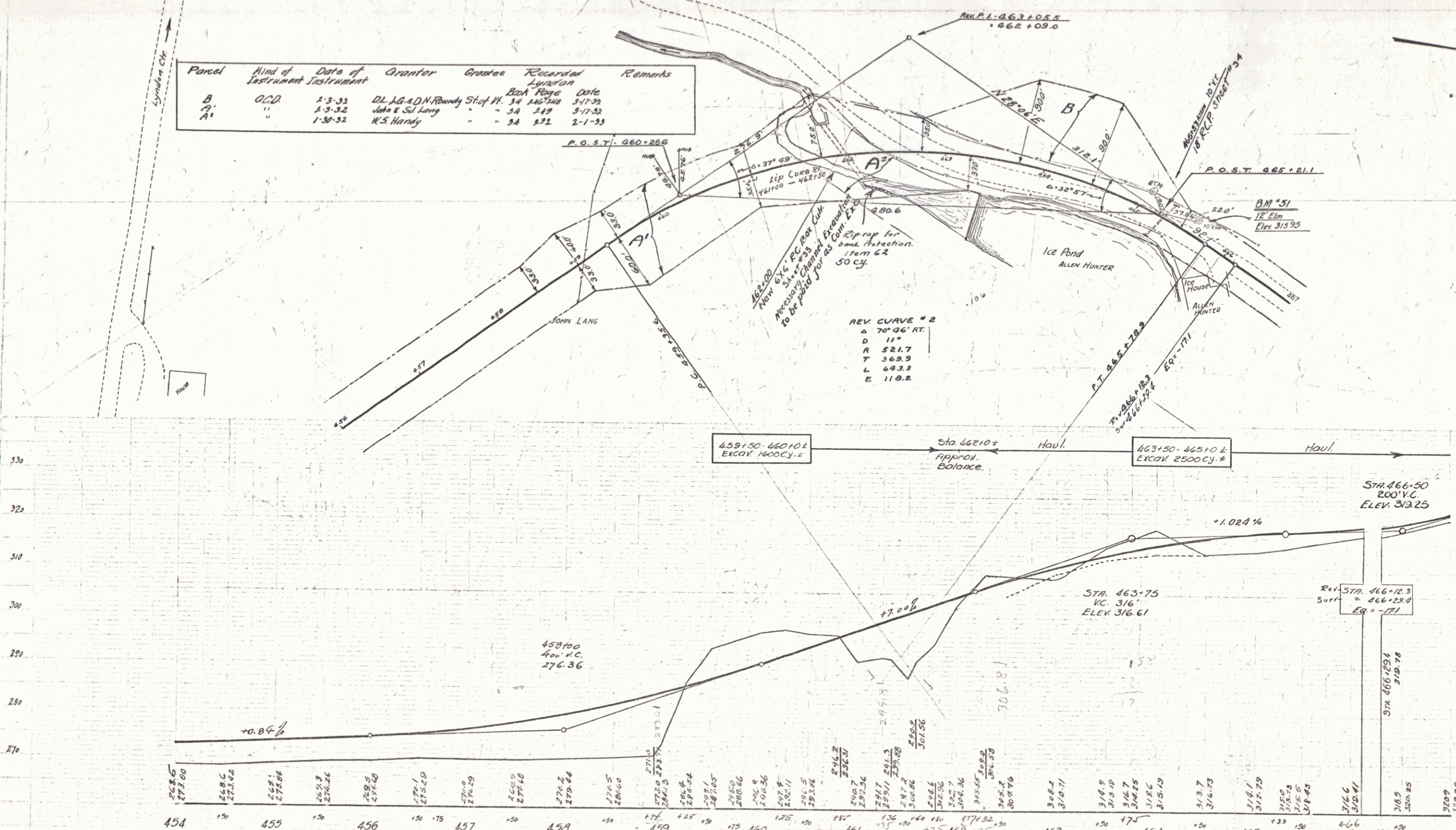
NEW REIN. CONC. PIPE CULVERTS REQUIRED

Sta.	Diam.	Length	Cent. Rub. Material
465+33	18"	48'	35 c.y.

NEW REIN. CONC. BOX CULVERTS REQUIRED

Sta.	Size	Conc. H. Steel	Struct. Exc.
462+00	6'x6'	66.6 c.y. 3260'	251 c.y.

Parcel	Kind of Instrument	Date of Instrument	Grantor	Grantee	Recorded	Remarks
B	CCD	1-3-32	DL. AG. A.D.M. Bundy Shop W.	Ben. Byrne	5-17-32	
A'	"	1-3-32	John & Sil Lang	" SA 349	5-17-32	
A'	"	1-30-32	W.S. Hardy	" SA 332	2-1-33	



B.M. #50 Spike in Root 12' Birch Location Unknown Elev. 294.01
 B.M. #51 Spike in Root 12' Elm 16' Lt of Sta 465+05 Elev. 315.95

4