

**NEW REINF. CONC. PIPE CULVERTS REQUIRED**

Stations	DIAM	LONG	CONC.	C.R.	IN	STEEL	D. GRADE
835100-835114 LH	12"	14'	1.69	-	99"	1	
835115	15"	28'	1.81	-	99"	1	
835114-837166 LH	12"	232'	1.8	-	99"	1	
843100	12"	24'	1.5	124'	157'	1	

**CEMENT MURBLE MASONRY WALL REQUIRED**

Station	Station	A.O.L.	Vol.
846+13	847+00	R.	87 c.y.
43	43	P.O.T. 845+40.9	
		G Line	Δ 28'36" Lt

**BRIDGE @ STA. 845+12**

Sheet No. SLB20 No CP - 18' Span. Square.  
 SLA6 No Square Without Piles - 1'-10"  
 SB2-Details - S204, S220, S221  
 SB2A - S222- S230  
 SB2B - S241

**ESTIMATE QUANTITIES BRIDGE @ STA. 845+12**

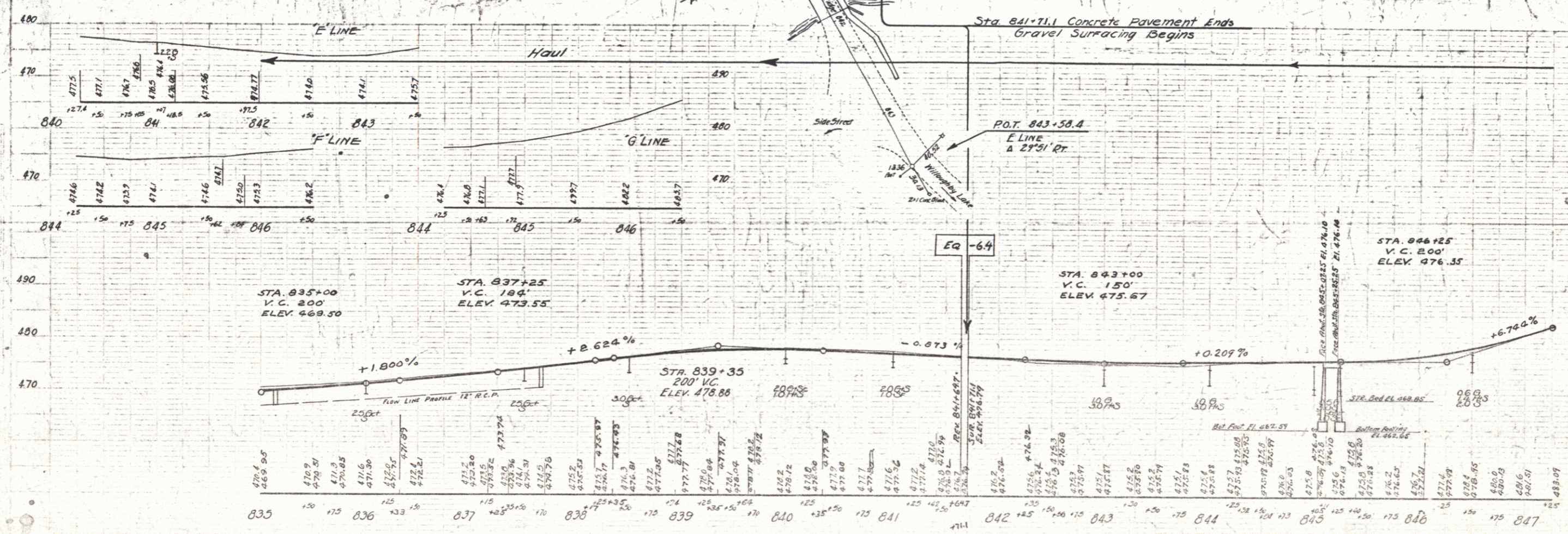
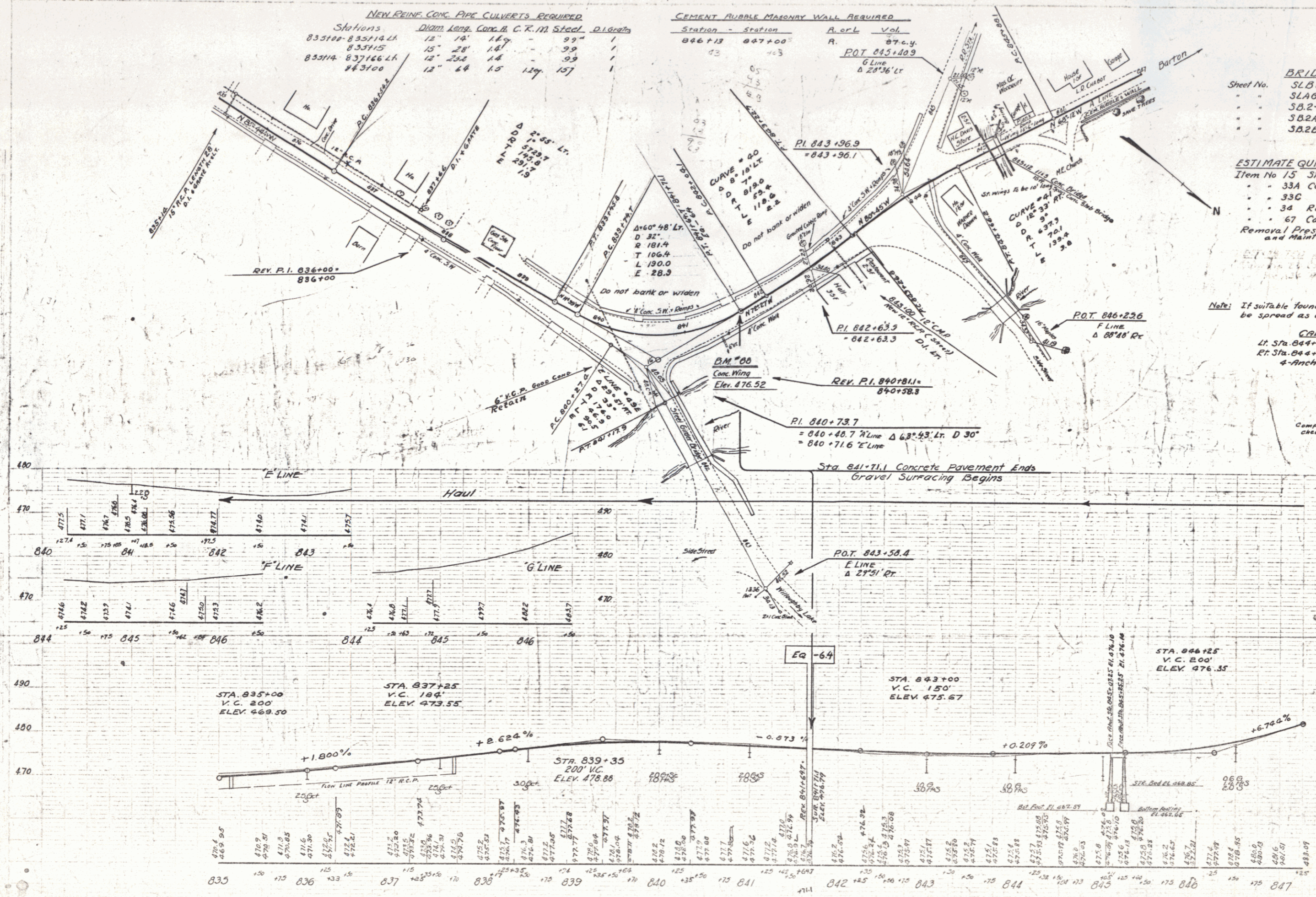
Item No 15 Struct. Excav. 241 cu.Yds.  
 " " 33A Concrete " 20.8 " "  
 " " 33C " " 128 " "  
 " " 34 Reinf. Steel 4370 lbs.  
 " " 67 Cable Guard Rail 144 Lin. Ft.  
 Removal Present Superstructure 1-Lump Sum  
 and Maintaining Traffic.

**Note:** If suitable foundation is not found, footings shall be spread as directed by the Engineer.

**CABLE GUARD RAIL**

Lt. Sta. 844+98 - Sta. 845+30 = 32.0 L.Ft.  
 Rt. Sta. 844+98 - Sta. 845+30 = 32.0 L.Ft.  
 4-Anchors @ 20' = 80.0  
 Total = 144.0 L.Ft.

Computed by: G.M.P. 1/15/32  
 checked by: T.M.W.



**Soil Section**

1	Sand
2	Gravel
3	Hard Layer
4	Gravel
5	Gravel
6	Gravel
7	Gravel
8	Gravel
9	Gravel
10	Gravel
11	Gravel
12	Gravel
13	Gravel
14	Gravel
15	Gravel
16	Gravel
17	Gravel
18	Gravel
19	Gravel
20	Gravel

CORRECT  
 A.D. [Signature]  
 BRIDGE ENGINEER