

WOOD GUIDE POSTS REQUIRED

CULV. STA.	LEFT	RIGHT
823+66		24'

WOOD GUIDE POSTS REQUIRED

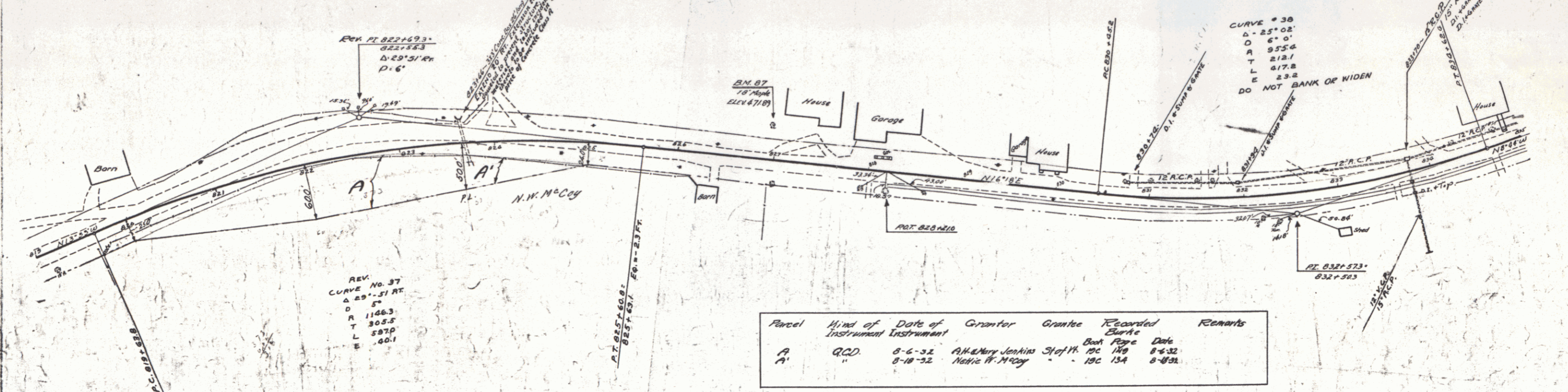
CULV. STA.	LEFT	RIGHT
833+70		

NEW REINF. CONG. PIPE CULVERTS REQUIRED

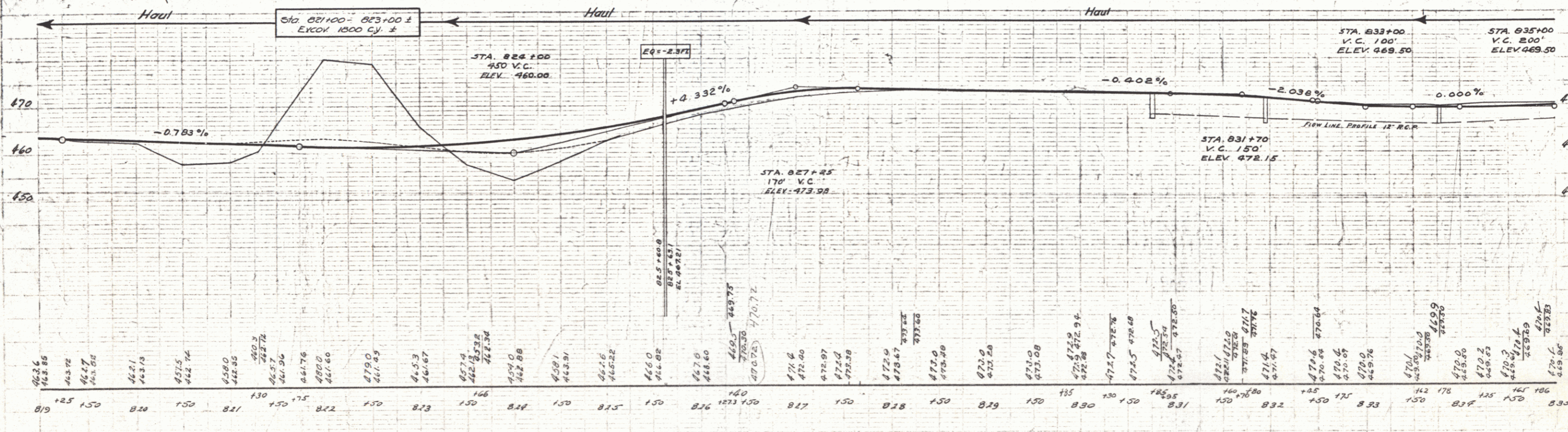
STATIONS	DIAM.	LENGTH	SUBM.	S.T.P.	DI. STEEL	D.I. GRADES
830+78 - 831+94	12"	126'	1.50'		150"	/
831+94 - 833+70	12"	186'	2.5'		150"	/
833+78 - 835+00	12"	122'	2.5'	1.27	150"	/
833+78	15"	104'	4.0'		250"	/

CULVERT TRIMMINGS REQUIRED

STATION	SIZE	CULV. DI.	STEEL
823+66	3x3	8.5'	600"



Parcel	Kind of Instrument	Date of Instrument	Grantor	Grantee	Recorded	Remarks
A	Q.C.D.	8-6-32	A.H. & Mery Jenkins	Stef. H. 190	110	8-6-32
A'	"	8-18-32	Nellie W. McCoy	"	134	8-18-32



Station	Elevation	Station	Elevation	Station	Elevation
819	463.6	822	461.60	825	462.85
820	462.1	823	461.67	826	467.0
821	461.5	824	462.8	827	471.6
822	461.60	825	470.0	828	472.0
823	461.67	826	470.0	829	472.5
824	462.8	827	473.98	830	472.5
825	462.85	828	473.0	831	472.5
826	467.0	829	473.0	832	470.6
827	471.6	830	472.5	833	469.5
828	472.0	831	472.5	834	469.5
829	472.5	832	470.6	835	469.5
830	472.5	833	469.5		
831	472.5				
832	470.6				
833	469.5				
834	469.5				
835	469.5				

SERIES F No 86C  
SHEET 30 of 110

31