

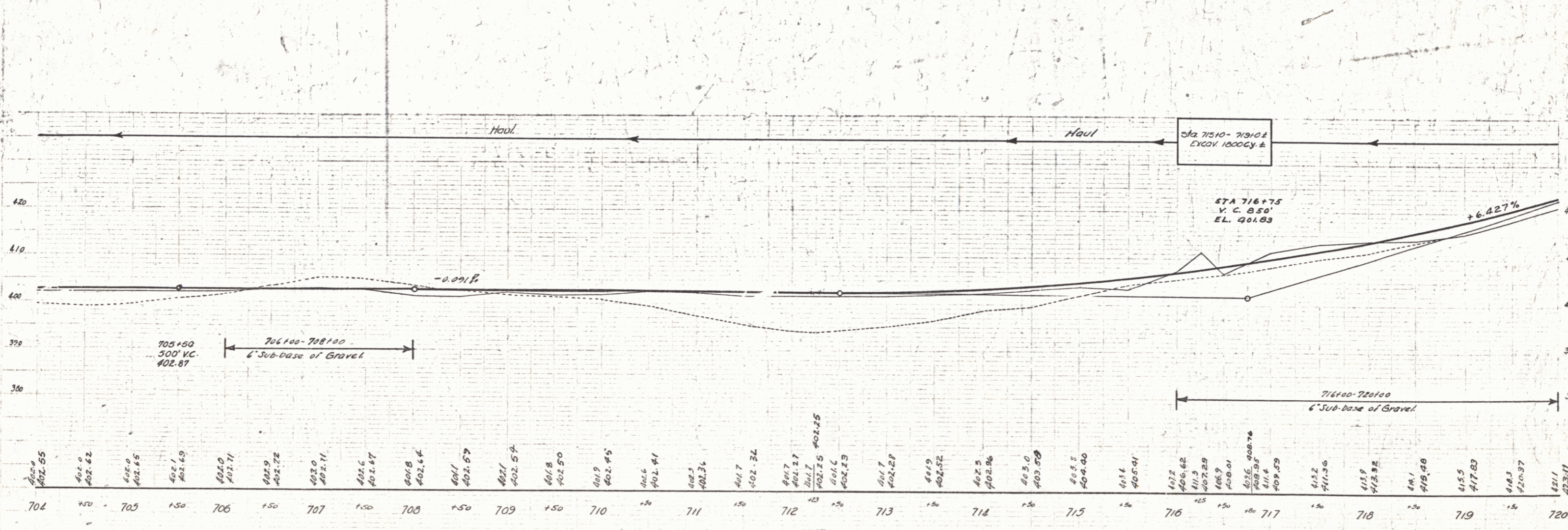
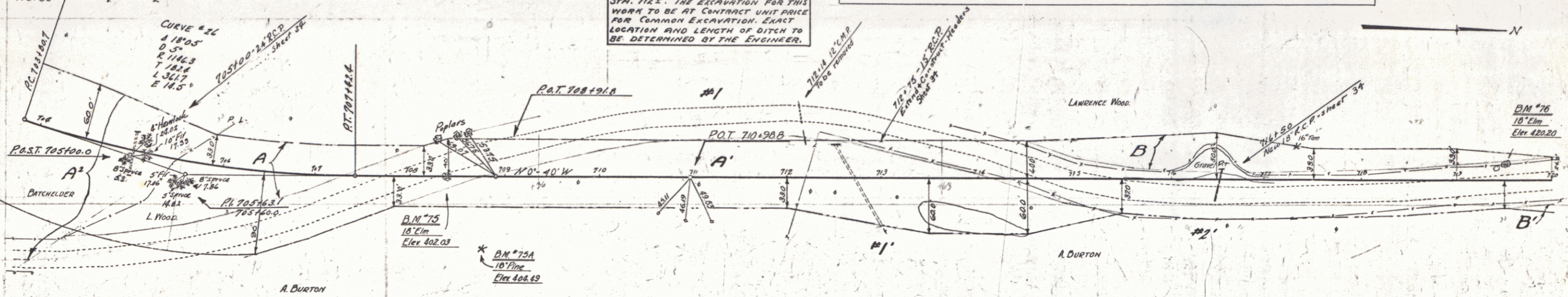
WOOD GUARD RAIL REQUIRED				CYCLE GUARD RAIL REQUIRED				NEW REIN. CONC. PIPE CULVERTS REQUIRED			
Culv. Sta.	Left	Right	Point	Stations	Length	Grade	By-1/2	Station	Diam	Length	C.R. %
705+50	24'	-	711+96	715+00	304'	40	544	705+50	18"	36'	3.5%
712+50	-	-	-	-	-	-	-	712+75	15"	30'	2.7%

Parcel	Kind of Instrument	Date of Instrument	Grantor	Grantee	Recorded Book	Page	Date	Remarks
A	M.D.	2-4-32	C.H. Batchelder	Staph	190	60	3-17-32	
Culv. Inlet #1	G.C.D.	2-29-32	C.H. Batchelder	"	190	129	3-17-32	Sta. 705+80 to South of 80'
A.B. D.K.A. #1	"	5-17-32	W.L. & N.P. Wood	"	190	166	6-18-32	Sta. 711+00 to 712+25
A.B. C.A.P. #2	"	5-21-32	A.H. & Emily Burton	"	190	74	5-30-32	Culv. Sta. 712+50 to 714+50

DIST. NO.	STATE	FED. AID PROJ. NO.	YEAR	SHEET NO.	TOTAL SHEETS
9	VT.	86 C	1931	22	110

Sta.	Left	Right
716+50	1	2

NOTE - OPEN DITCH APPROX. 450' LEFT OF STA. 710± TO BE CONSTRUCTED TO DRAIN SURFACE WATER SOUTH FROM STA. 712±. THE EXCAVATION FOR THIS WORK TO BE AT CONTRACT UNIT PRICE FOR COMMON EXCAVATION. EXACT LOCATION AND LENGTH OF DITCH TO BE DETERMINED BY THE ENGINEER.



Station	Elevation	Station	Elevation	Station	Elevation
704	402.85	705	402.82	706	402.81
705	402.80	706	402.79	707	402.78
706	402.77	707	402.76	708	402.75
707	402.74	708	402.73	709	402.72
708	402.71	709	402.70	710	402.69
709	402.68	710	402.67	711	402.66
710	402.65	711	402.64	712	402.63
711	402.62	712	402.61	713	402.60
712	402.59	713	402.58	714	402.57
713	402.56	714	402.55	715	402.54
714	402.53	715	402.52	716	402.51
715	402.50	716	402.49	717	402.48
716	402.47	717	402.46	718	402.45
717	402.44	718	402.43	719	402.42
718	402.41	719	402.40	720	402.39
719	402.38	720	402.37		402.36
					402.35
					402.34
					402.33
					402.32
					402.31
					402.30
					402.29
					402.28
					402.27
					402.26
					402.25
					402.24
					402.23
					402.22
					402.21
					402.20
					402.19
					402.18
					402.17
					402.16
					402.15
					402.14
					402.13
					402.12
					402.11
					402.10
					402.09
					402.08
					402.07
					402.06
					402.05
					402.04
					402.03
					402.02
					402.01
					402.00

SERIES F N° 866
SHEET 22 OF 110