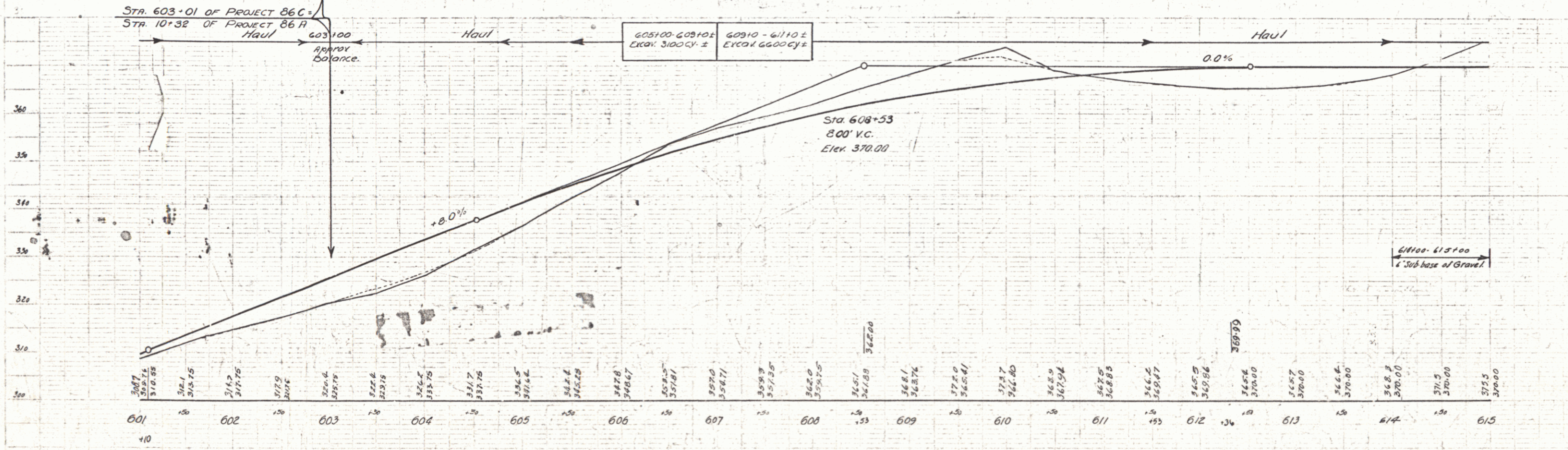
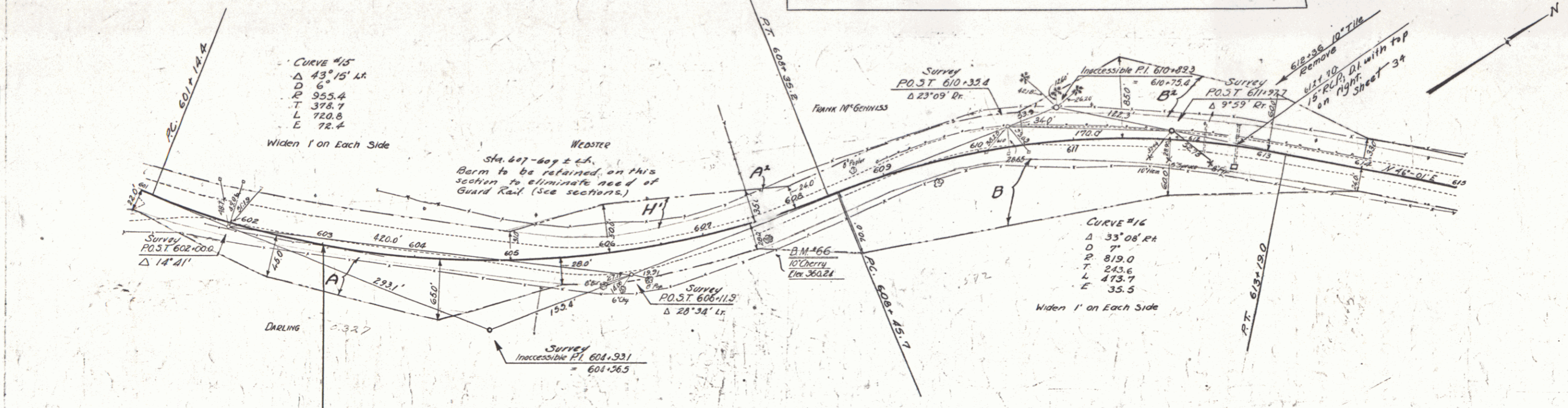


Wood Guide Posts Required		Cable Girded Rail Required			New Reinf. Conc. Pipe Culverts Required						
Culv. Sta.	Left	Right	Stations	Length	Const.	Qty./Len.	Sta.	Diam.	Length	Const.	R.C.M. Steel
612+70		2	601+70 - 605+70 EA	400'	40"	440'	612+70	15"	56'	15cy	1.2 107"
			607+70 - 608+60 EA	120'	40"	144'					
			617+70 - 618+60 EA	365'	40"	408'					

Parcel	Kind of Instrument	Date of Grant	Grantor	Grantee	Recorded	Remarks
N	O.C.D.	5-25-32	AA & M Webster	Steff	34	257-3 5-27-32
A & B	"	8-9-32	C.A. Darling	"	34	272-3 8-9-32
A & B	"	5-27-32	Fl. & H.C. McGinnis	"	34	276-7 5-27-32

DATE 06C 1931 13 110



SERIES F NO 06C
SHEET 15 OF 110