

WOOD GUIDE RAIL REQUIRED

Sta.	Left	Right
465+33	2'	

CABLE GUANO RAIL REQUIRED

Stations	Length	Const.	By/Length
458+30-459+54	104'	40'	144'
458+25-458+97	72'	40'	112'
460+22-461+08	86'	40'	136'
461+60-462+64	104'	40'	144'

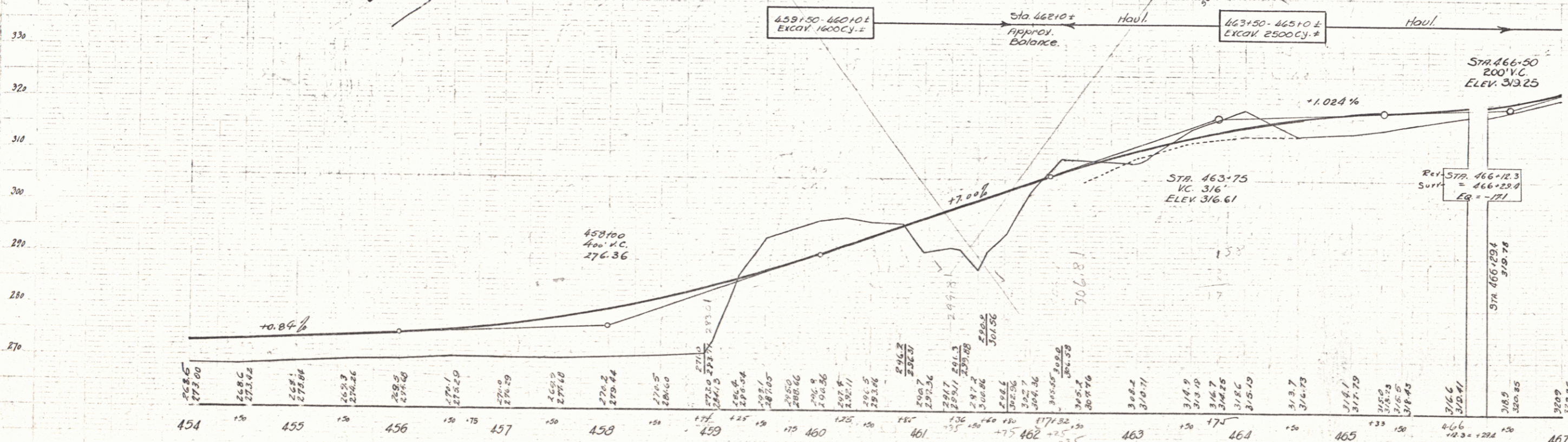
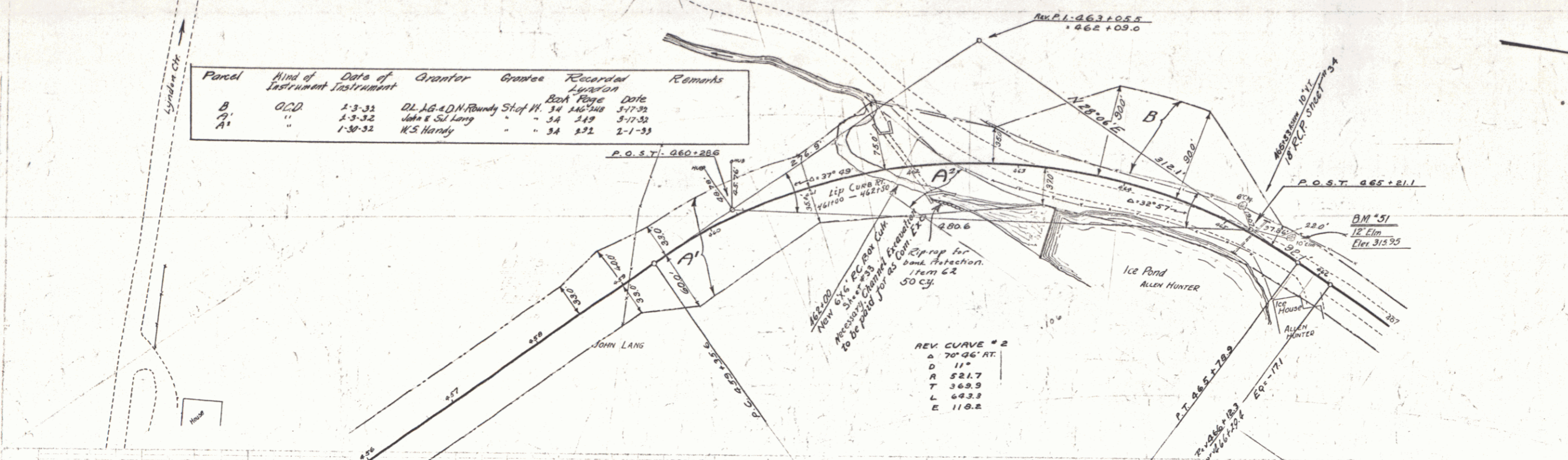
NEW REINFORCED CONCRETE PIPE CULVERTS REQUIRED

Sta.	Diam.	Length	Cent. Rub. Material
465+33	18"	48'	35 c.y.

NEW REINFORCED CONCRETE BOX CULVERTS REQUIRED

Sta.	Size	Conc. H. Steel	Struct. Exc.
462+00	6'x6'	66.6 c.y.	251 c.y.

Parcel	Kind of Instrument	Date of Instrument	Grantor	Grantee	Recorded Location	Remarks
B	O.C.D.	1-3-32	DL. AG. A.D.M. Bundy	Stof. H.	34 146'44"	3-17-32
A'	"	1-3-32	John & Sil Lang	"	3A 149'	3-17-32
A'	"	1-30-32	W.S. Hardy	"	3A 132'	2-1-33



B.M. #50 Spike in Root 12 Birch Location Unknown Elev. 294.01
 B.M. #51 Spike in Root 12 Elm 16 ft Lt of Sta 465+05 Elev. 315.95