

TWO CABLE GUARD RAIL Wood Guide Posts
 527+00-532+00 RA 16' by
 532+00-536+00 RA 16' by
 536+00-537+25 RA 16' by

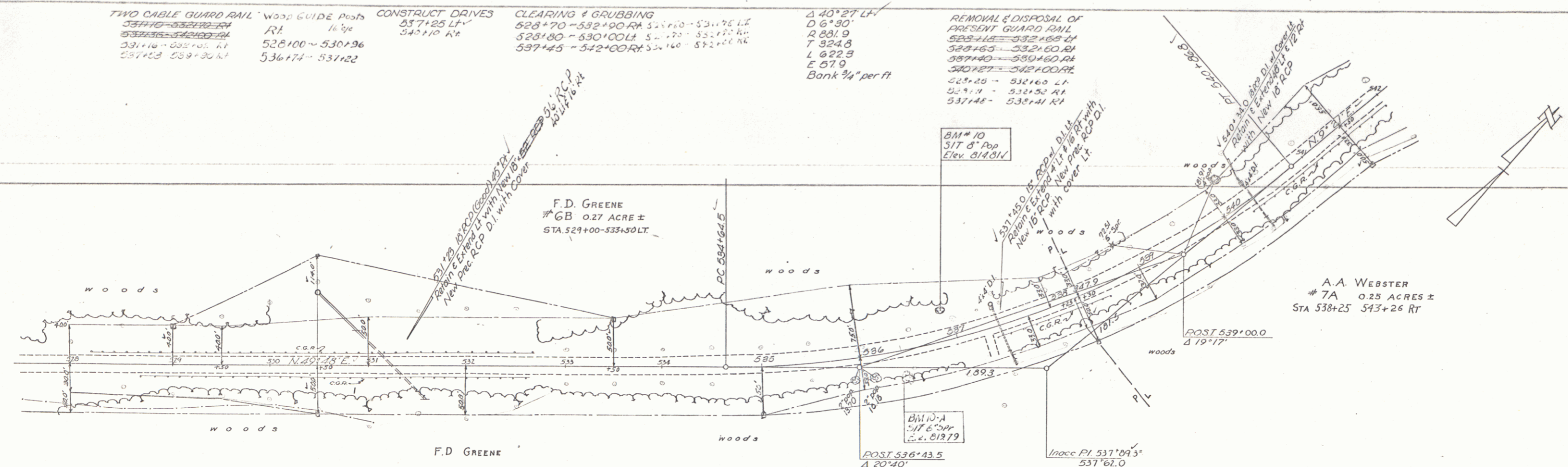
CONSTRUCT DRIVES
 527+25 LT
 542+10 RT

CLEARING & GRUBBING
 528+70-532+00 RA 5' by 16' by
 528+00-530+00 RA 5' by 16' by
 537+45-542+00 RA 5' by 16' by

Δ 40' 27" LT
 D 6' 30"
 R 881.9
 T 324.8
 L 622.9
 E 57.9
 Bank 3/4" per ft

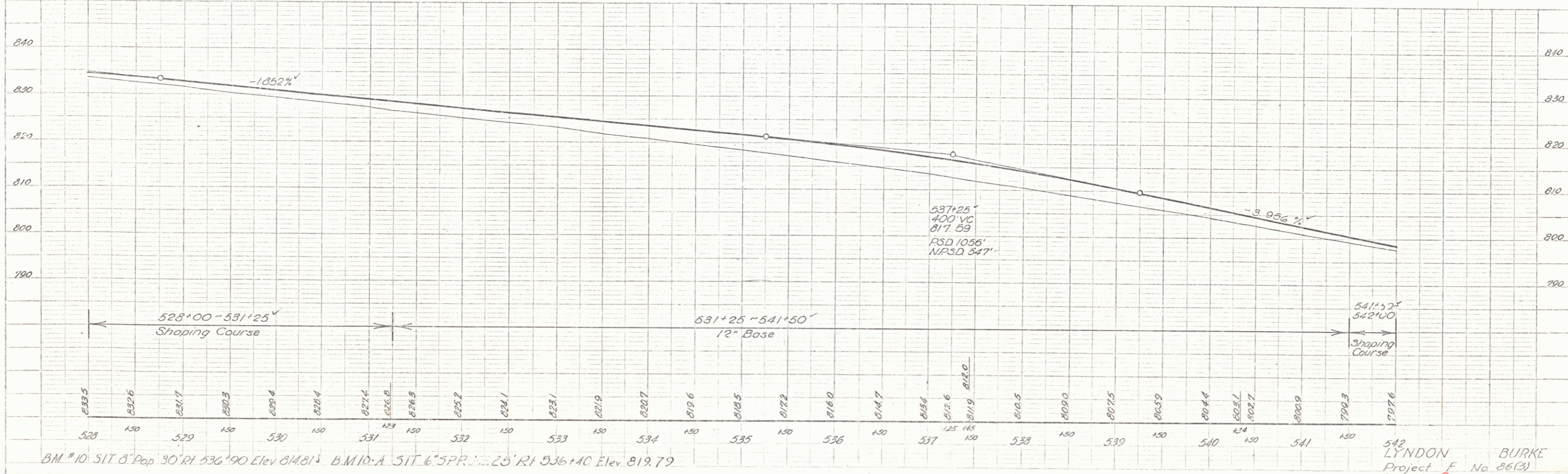
REMOVAL & DISPOSAL OF PRESENT GUARD RAIL
 528+45-532+00 RA
 529+45-532+00 RA
 537+40-539+40 RA
 540+25-542+00 RA
 528+25-532+00 LT
 529+10-532+50 RT
 537+48-538+41 RT

PLAN
 SHEET NO. 20
 DATE 10-10-35
 DRAWN BY MILLER
 CHECKED BY MILLER



PARCEL	INSTRUMENT	DATE	GRANTOR	GRANTEE	RECORDED TOWN OF	BOOK	PAGE	DATE	REMARKS
7A	BURKE	10-10-35	A.A. WEBSTER	ST OF VT	LYNDON	45	437	2-2-36	see also sheets 21, 22, 23, 24 & 25
7B	WDOE	2-14-36	A.A. WEBSTER	ST OF VT	LYNDON	45	439	3-14-36	see sheets 21 & 22 CHANNEL RIGHTS

6C 0.12 ACRE ±
 STA 535+00 - 538+30 RT



542 LYNDON BURKE
 Project No 86(3)
 Sheet 20 of 173