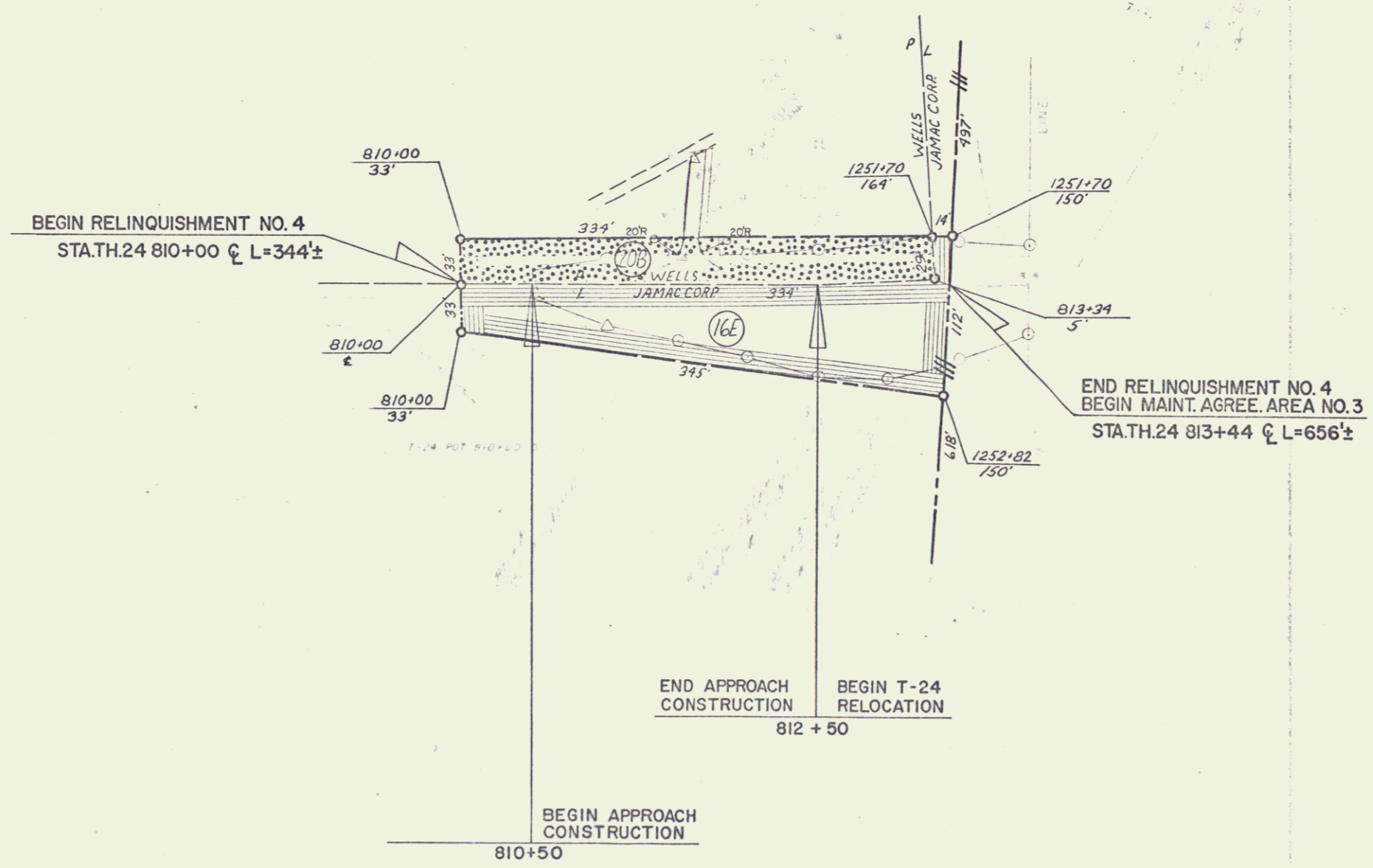


| CONSTRUCT DRIVE | |
|-----------------|------|
| STATION | POS. |
| 811 + 60 | LT |



STATE OF VERMONT
 DEPARTMENT OF TRANSPORTATION
 RELOCATION OF U.S. ROUTE 75 FROM STA. 810+00 TO STA. 814+00
 THRU 24 RELOCATION
 STA. 810+00 TO 814+00
 PLAN SCALE
 1" = 40'