

*** GRANITE SLOPE EDGING ITEM 556-A**
 802+00-804+95' (Island)
 803+63'-804+95' Ft.
 804+22'-804+95' Lt.
 US 4 0+80'-11+62' (Island)
 US 4 1+13'-11+60' Ft.
 US 4 2+06'-15+91' (Island)
 US 4 2+27'-13+63' Ft.
 Leg A 0+02'-2+38' Ft.
 Leg A 0+85'-1+50' Lt.
 Leg D 0+48'-3+90' Ft.
 Leg D 1+10'-2+84' Lt.
 Jughandle 2+80'-3+50' Lt.
 Jughandle 7+04'-10+21' Lt.
 Jughandle 3+96'-10+21' Ft.
 U.S. 4 1+109'-1+130' Lt.

*** ONE COURSE CEMENT CONCRETE SIDEWALK ITEM 560**
 Jughandle 1+00'-3+50' Lt.
 Jughandle 3+60' Lt.

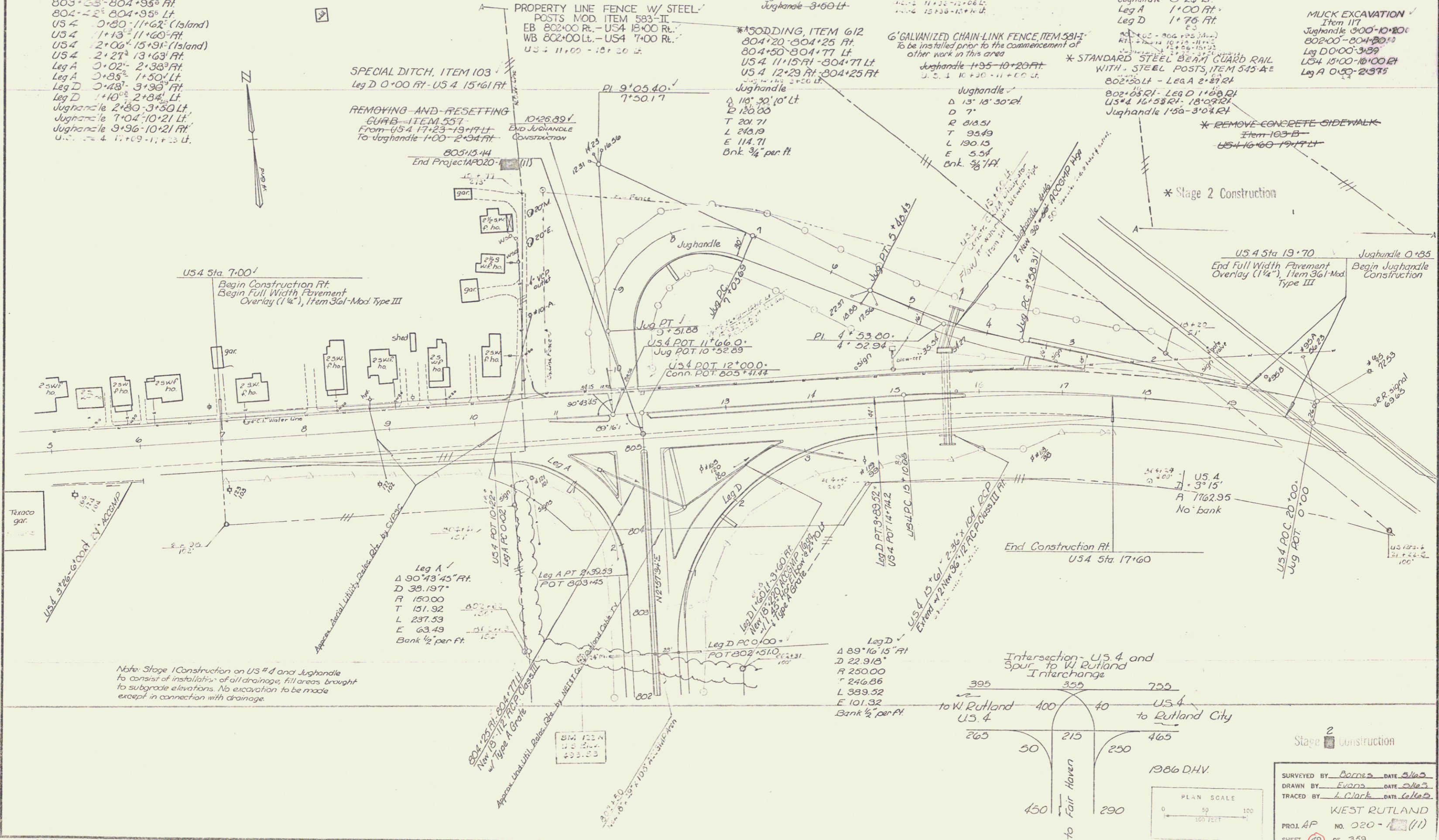
*** BITUMINOUS CONCRETE GUTTER, ITEM 554**
 Jughandle 3+25' Lt.
 Leg A 1+00' Ft.
 Leg D 1+75' Ft.

MUCK EXCAVATION
 Item 117
 Jughandle 3+00'-10+20'
 802+00'-804+20'
 Leg D 0+00'-3+39'
 US 4 10+00'-10+00' Ft.
 Leg A 0+50'-2+37'

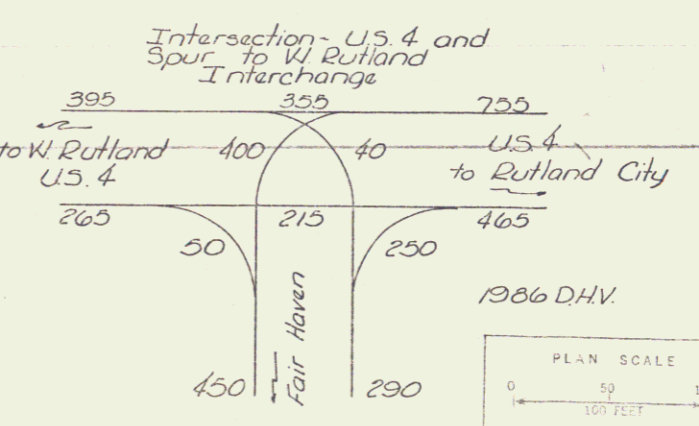
*** STANDARD STEEL BEAM GUARD RAIL WITH STEEL POSTS, ITEM 545-AE**
 802+50' Lt. - Leg A 2+87' Lt.
 802+65' Lt. - Leg D 1+60' Lt.
 US 4 16+55' Rt. - 18+07' Rt.
 Jughandle 1+50'-3+04' Rt.

*** REMOVE CONCRETE SIDEWALK**
 Item 103-B
 US 4 16+60'-19+17' Lt.

*** Stage 2 Construction**



Note: Stage 1 Construction on US 4 and Jughandle to consist of installation of all drainage, fill areas, brought to subgrade elevations. No excavation to be made except in connection with drainage.



SURVEYED BY	Booms	DATE	5/16/80
DRAWN BY	Evans	DATE	5/16/80
TRACED BY	L. Clark	DATE	6/16/80
WEST RUTLAND			
PROJ. #P	NO. 020-	(11)	
SHEET	49	OF	353

Sheet 108 of 170 Sheets