

DRILLING & PLASTIC OF SOLID ROCK SUBGRADE ITEM 535
 * THREE CABLE GUARD RAIL WITH LIGHT STEEL POSTS, ITEM 538

TREATED TIMBER CURB, ITEM 550 *
 BITUMINOUS-CONCRETE CURB, ITEM 556 *

PROPERTY LINE FENCE WITH STEEL POSTS, ITEM 583-II

STANDARD STEEL BEAM GUARD RAIL WITH STEEL POSTS, ITEM 545-A

GALVANIZED CHAIN-LINK FENCE, ITEM 581-I

SODDING, ITEM 612 *

REINFORCED CONCRETE RETAINING WALL

METAL DIN-TYPE RETAINING WALL, ITEM 578

* BRIDGE RAILING (Bridge Approach) ITEM 572

DEMOLITION & DISPOSAL OF BUILDING, ITEM 536

685+00 RT
 685+50 LT
 685+50 S
 689+00 RT
 690+00 E
 691+70 LT
 691+70 RT
 693+30

688+00 LT

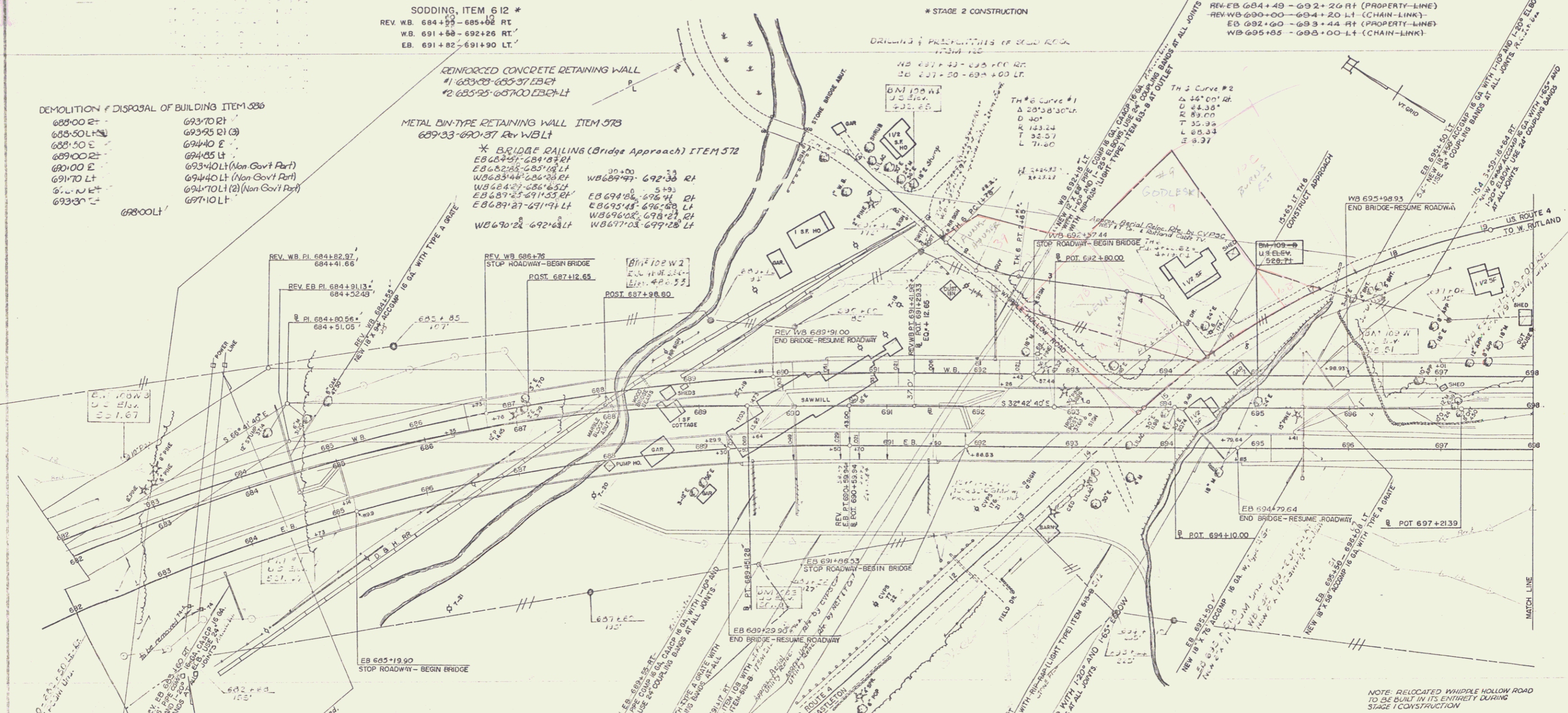
689+33-690+37 Rev WBLT

EB 687+57-689+82 RT
 EB 687+57-689+82 LT
 WB 689+99-692+38 RT
 WB 689+99-692+38 LT
 EB 694+27-691+55 RT
 EB 694+27-691+55 LT
 WB 690+22-692+63 LT
 WB 697+02-699+28 LT

* STAGE 2 CONSTRUCTION

THAT FENCE LISTED BELOW IS TO BE INSTALLED PRIOR TO THE COMMENCEMENT OF OTHER WORK IN THIS AREA.

REV-EB 684+48-692+26 RT (PROPERTY-LINE)
 REV-WB 690+00-694+20 LT (CHAIN-LINK)
 EB 692+60-693+44 RT (PROPERTY-LINE)
 WB 695+65-698+00 LT (CHAIN-LINK)



REV. WB. PI. 684+82.97, 684+41.66
 REV. EB. PI. 684+91.13, 684+52.49
 REV. WB. PI. 684+80.56, 684+51.05
 REV. WB. PI. 687+76, 687+12.69
 REV. WB. PI. 689+91.00, 689+91.00
 REV. WB. PI. 694+79.64, 694+79.64
 REV. WB. PI. 695+19.90, 695+19.90

REV. WB. CURVE
 D 33°30' RT
 R 1909.86
 T 607.46
 L 1176.29
 E 94.28
 BANK 1/8" PER FT

REV. WB. CURVE
 D 2°30' RT
 R 2291.83
 T 700.38
 L 1329.33
 E 104.61
 BANK 3/4" PER FT

REV. WB. CURVE
 D 33°30' RT
 R 1909.86
 T 607.46
 L 1176.29
 E 94.28
 BANK 1/8" PER FT

REV. WB. CURVE
 D 33°30' RT
 R 1909.86
 T 607.46
 L 1176.29
 E 94.28
 BANK 1/8" PER FT

NOTE: RELOCATED WHIPPLE HOLLOW ROAD TO BE BUILT IN ITS ENTIRETY DURING STAGE 1 CONSTRUCTION

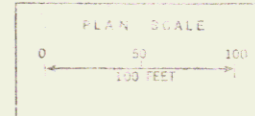
NOTE: AERIAL UTILITY RELOC. RTE. OF CVDSC OVER THE LIMITED ACCESS AREA AND ALONG PRESENT RTE. U.S. 4 WILL NOT BE BUILT UNTIL THE COMPLETION OF HIGHWAY CONSTRUCTION

Stage 2 Construction

WEST RUTLAND

SUBMITTED BY: F.C.E. DATE: 2/66
 DRAWN BY: AJA DATE: 2/66

AP 020-1 (11)
 35 353



Sheet 94 of 170 Sheets