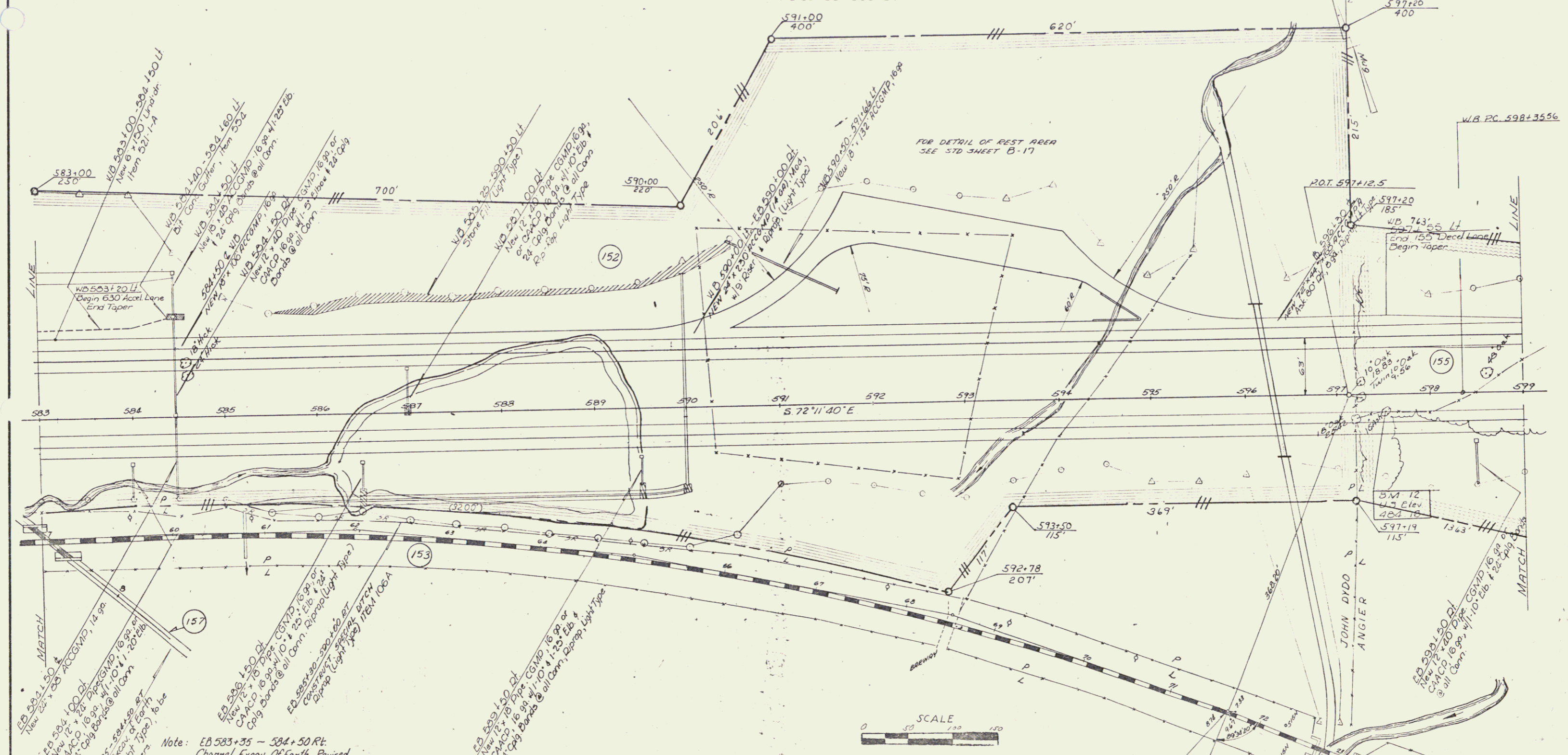


- PROPERTY LINE FENCE WITH STEEL POSTS, MOD. ITEM 503-II
WB 583+00 - 585+00 Lt.
WB 583+00 - 587+50 Lt.
EB 582+00 - 589+00 Rt.
WB 583+00 - 589+00 Lt.
- THREE CABLE GUARD RAIL WITH STEEL POSTS, 542
WB 583+00 - 591+30 Lt.
WB 587+00 - 590+04 Lt.
EB 583+00 - 592+04 Rt.
EB 583+00 - 599+00 Rt.
- STANDARD STEEL BEAM GUARD RAIL, ITEM 545-A
595+99 - 596+53 Lt, WB
- SLOPE EDGING
WB 594+53 - 594+89 Lt
MUCK EXCAVATION
ITEM 117
EB 585+50 - 590+50
WB 585+50 - 590+50
- BIT CONC CURB
ITEM 205
WB 583+00 - 587+00 Rt.
EB 583+00 - 592+64 Rt.
- CEDAR LOG GUARD RAIL (Rest Area)
WB 591+75 - 594+07 Lt.



Note: EB 583+35 - 584+50 Rt.
 Channel Excav. Of Earth. Revised
 See Sheet No 9A For As-built
 Ditch Design. Right To Const And
 Maintain Ditch Per Order Of
 Highway Board.

VERMONT DEPARTMENT OF HIGHWAYS
 RIGHT-OF-WAY PLANS
 PROJECT: I-94 WEST RUTLAND
 No: F020-1 (5)
 SHEET: 5 OF 17

FEB 25 1980