

\* THREE CABLE GUARD RAIL w/  
LIGHT STEEL POSTS ITEM 533  
EB 431+00 - 444+59 Lt.  
WB 432+52 - 439+56 Lt.  
WB 442+30 - 446+00 Lt.  
431+00

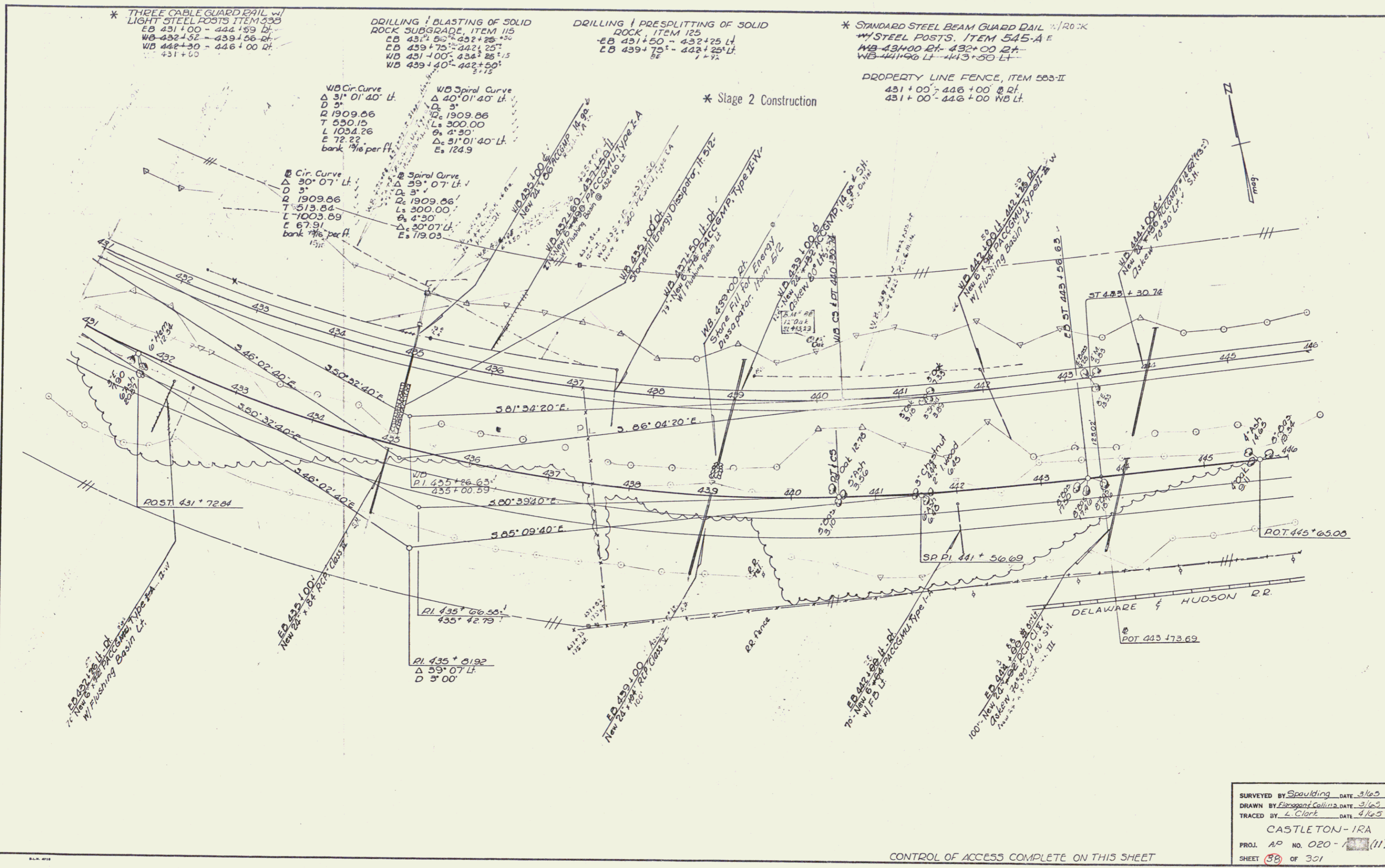
DRILLING / BLASTING OF SOLID  
ROCK SUBGRADE, ITEM 115  
EB 431+50 - 432+25 Lt.  
EB 439+75 - 442+25 Lt.  
WB 431+00 - 434+25 Lt.  
WB 439+40 - 442+50 Lt.

DRILLING / PRESPLITTING OF SOLID  
ROCK, ITEM 125  
EB 431+50 - 432+25 Lt.  
EB 439+75 - 442+25 Lt.

\* STANDARD STEEL BEAM GUARD RAIL w/ROCK  
w/STEEL POSTS, ITEM 545-A  
WB 434+00 Lt - 432+00 Lt  
WB 441+96 Lt - 443+50 Lt

PROPERTY LINE FENCE, ITEM 553-II  
431+00 - 446+00 @ Rt.  
431+00 - 446+00 WB Lt.

\* Stage 2 Construction



SURVEYED BY Spaulding	DATE 3/65
DRAWN BY Linscott Collins	DATE 3/65
TRACED BY L. Clark	DATE 4/65
CASTLETON - IRA	
PROJ. AP NO. 020 -	(11)
SHEET 38	OF 301

CONTROL OF ACCESS COMPLETE ON THIS SHEET

Stage 2 Construction

Sheet 59 of 170 sheets

28