

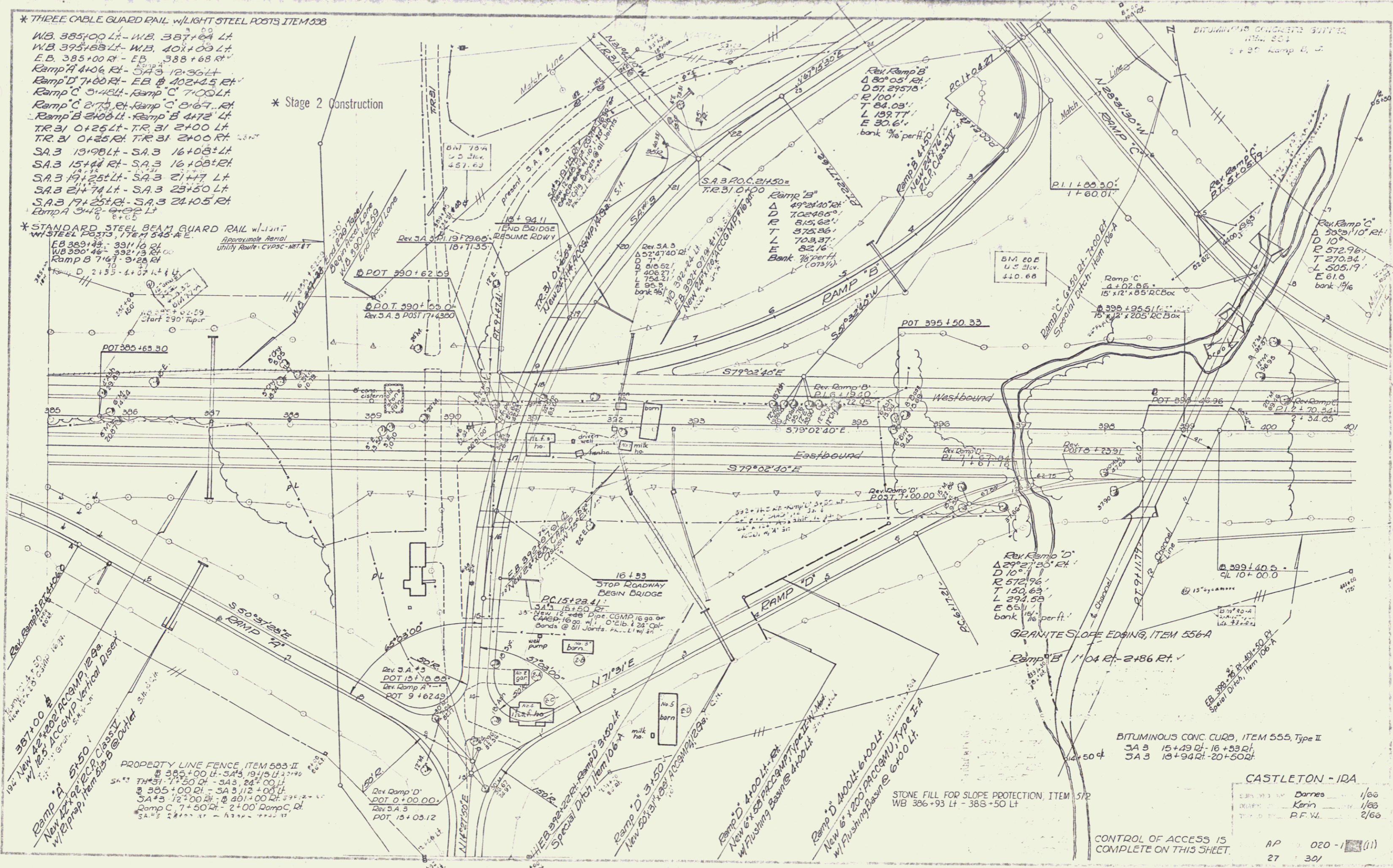
* THREE CABLE GUARD RAIL w/LIGHT STEEL POSTS ITEM 538

WB 385+00 LT - WB 387+64 LT
WB 395+68 LT - WB 401+03 LT
EB 385+00 RT - EB 388+68 RT
Ramp A 4+06 RT - SA 3 12+36 LT
Ramp D 7+00 RT - EB 402+45 RT
Ramp C 5+48 LT - Ramp C 7+00 LT
Ramp C 2+75 RT - Ramp C 2+67 LT
Ramp B 2+08 LT - Ramp B 4+72 LT
TR 31 0+25 LT - TR 31 2+00 LT
TR 31 0+25 RT - TR 31 2+00 RT
SA 3 13+98 LT - SA 3 16+08 RT
SA 3 15+44 RT - SA 3 16+08 RT
SA 3 17+25 LT - SA 3 21+17 LT
SA 3 21+74 LT - SA 3 23+50 LT
SA 3 17+25 RT - SA 3 24+05 RT
Ramp A 5+48 RT - SA 3 6+05 LT

* Stage 2 Construction

* STANDARD STEEL BEAM GUARD RAIL w/LIGHT WHISTLE POSTS, ITEM 545 * E

EB 383+42 - 391+16 RT
WB 390+48 - 392+13 RT
Ramp B 7+67 RT - SA 3 8+28 RT
D 2+55 - 4+07 LT & RT
Start 290' taper



PROPERTY LINE FENCE, ITEM 503-II
WB 385+00 LT - SA 3 19+15 LT
SA 3 17+31 - 17+50 RT - SA 3 24+00 LT
SA 3 12+00 RT - SA 3 17+00 LT
SA 3 12+00 RT - SA 3 17+00 LT
Ramp C 7+50 RT - 2+00 Ramp C, Rt.
SA 3 24+05 RT - 17+25 RT

STONE FILL FOR SLOPE PROTECTION, ITEM 572
WB 386+93 LT - 388+50 LT

BITUMINOUS CONC CURB, ITEM 555, Type II
SA 3 15+49 RT - 16+53 RT
SA 3 13+94 RT - 20+50 RT

CASTLETON - I.D.A.

EB 383+42	Darnes	1/60
WB 390+48	Kerin	1/60
TR 31 0+25	P.F.V.	2/60

CONTROL OF ACCESS IS COMPLETE ON THIS SHEET.
AP 020 - 1 (11)
27 30/