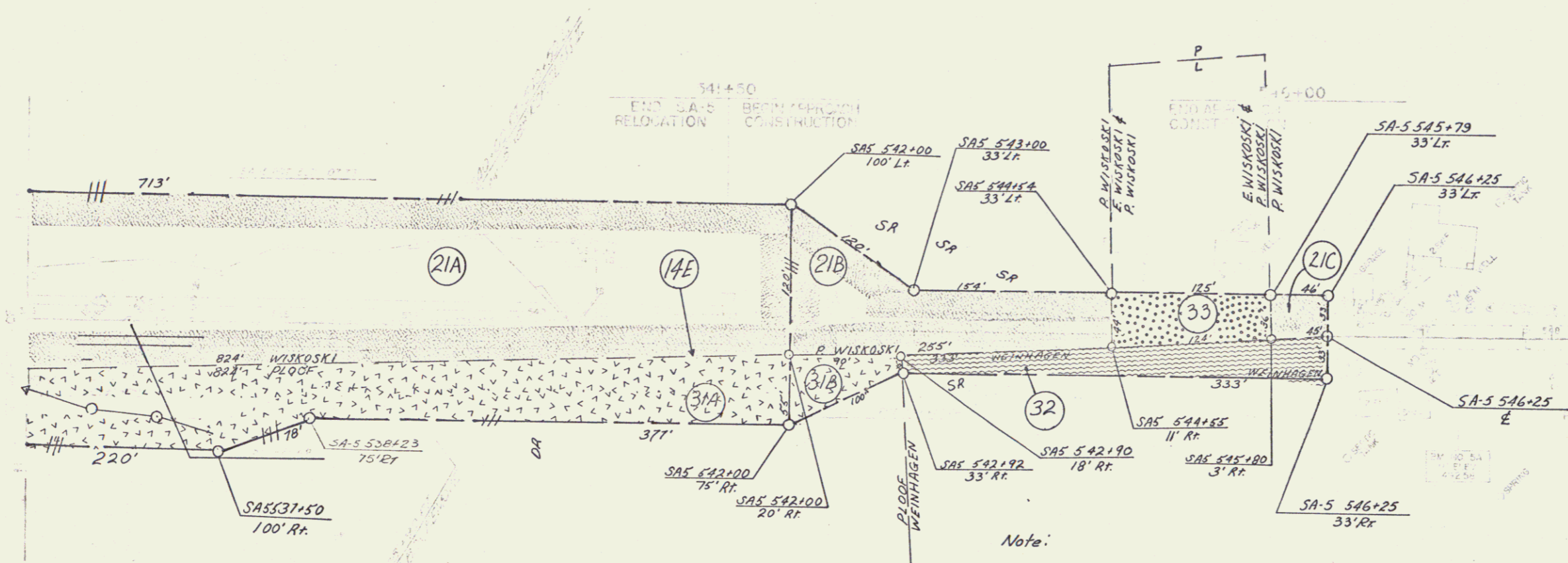


PERMANENT FENCE WITH 5'x4" POSTS DEM 0817. A.S. STATION POS 220 100' R. 220 100' R.	TREATED TIMBER CURB 4" x 8" STATION POS 220 100' R. 220 100' R.	ACQUISITION AND RELOCATION OF ROAD SIGNAGE AND PERMITS ITEM 10 STATION POS 220 100' R. 220 100' R.	CONSTRUCTION STATION POS 220 100' R. 220 100' R.
PERMANENT FENCE WITH 5'x4" POSTS DEM 0817. A.S. STATION POS 220 100' R. 220 100' R.	TREATED TIMBER CURB 4" x 8" STATION POS 220 100' R. 220 100' R.	ACQUISITION AND RELOCATION OF ROAD SIGNAGE AND PERMITS ITEM 10 STATION POS 220 100' R. 220 100' R.	CONSTRUCTION STATION POS 220 100' R. 220 100' R.
PERMANENT FENCE WITH 5'x4" POSTS DEM 0817. A.S. STATION POS 220 100' R. 220 100' R.	TREATED TIMBER CURB 4" x 8" STATION POS 220 100' R. 220 100' R.	ACQUISITION AND RELOCATION OF ROAD SIGNAGE AND PERMITS ITEM 10 STATION POS 220 100' R. 220 100' R.	CONSTRUCTION STATION POS 220 100' R. 220 100' R.



SA-5 IS TO BE RELOCATED EARLY DURING STAGE 1 CONSTRUCTION.

STATE OF VERMONT
 DEPARTMENT OF TRANSPORTATION
 RELOCATION OF ROAD PERMITS
 FAIR HAVEN
 STATION 220+00 TO 546+25
 PROJECT NO. 92-19

35A 69

25