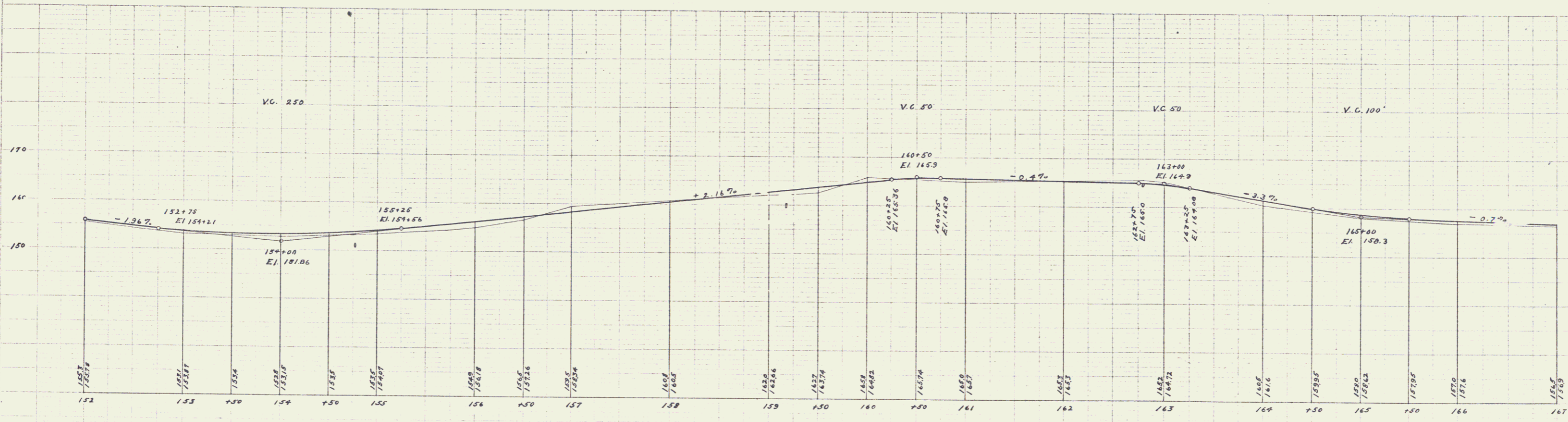
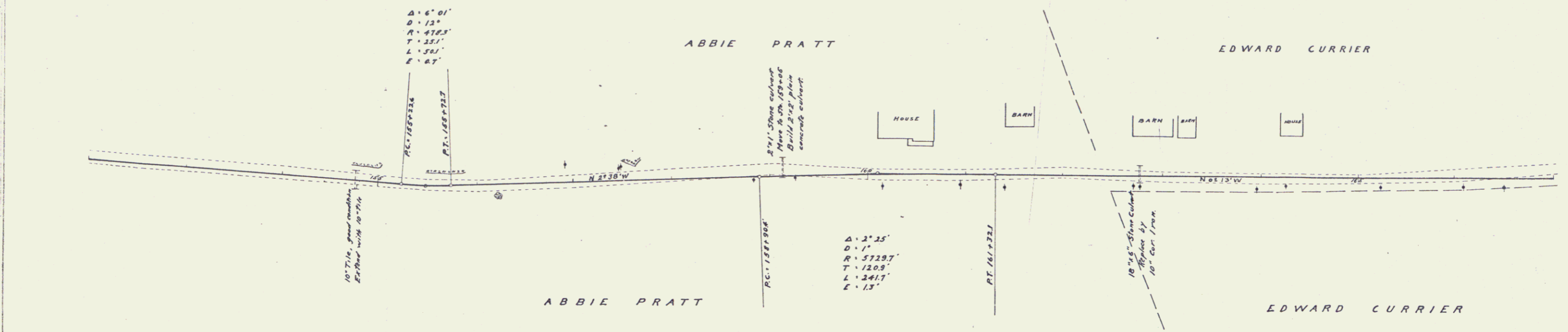


**GUARD RAIL REQUIRED**  
**ON LEFT**  
 Sta. 154+65 to Sta. 154+83 Length 24'-4"  
 - 158+33 - 153+17 = 24'  
 - 162+67 - 162+31 = 24'  
**ON RIGHT**  
 Sta. 154+99 to Sta. 156+01 = 152'  
 - 158+50 - 153+30 = 00'  
 - 162+67 - 162+31 = 24'  
**TOTAL THIS SHEET 328**

**NEW CULVERTS REQUIRED**  
 Sta. 154+27 - 10' Tile 10 yr. Concrete in Macadam 1 cu yd. (1-1-4)  
 - 159+05 - Culvert 5.5' - (1-1-4)  
 - 162+79 16" Cor. Iron 24" R. - Macadam 1. - (1-1-4)

PRO. NO.	DATE	BY	CHKD.	SCALE	TOTAL
B	VE	10	10/18	1/2	3.0

PLAN  
 DATE  
 BY  
 CHKD.  
 SCALE  
 TOTAL



Serial of Plans  
 12