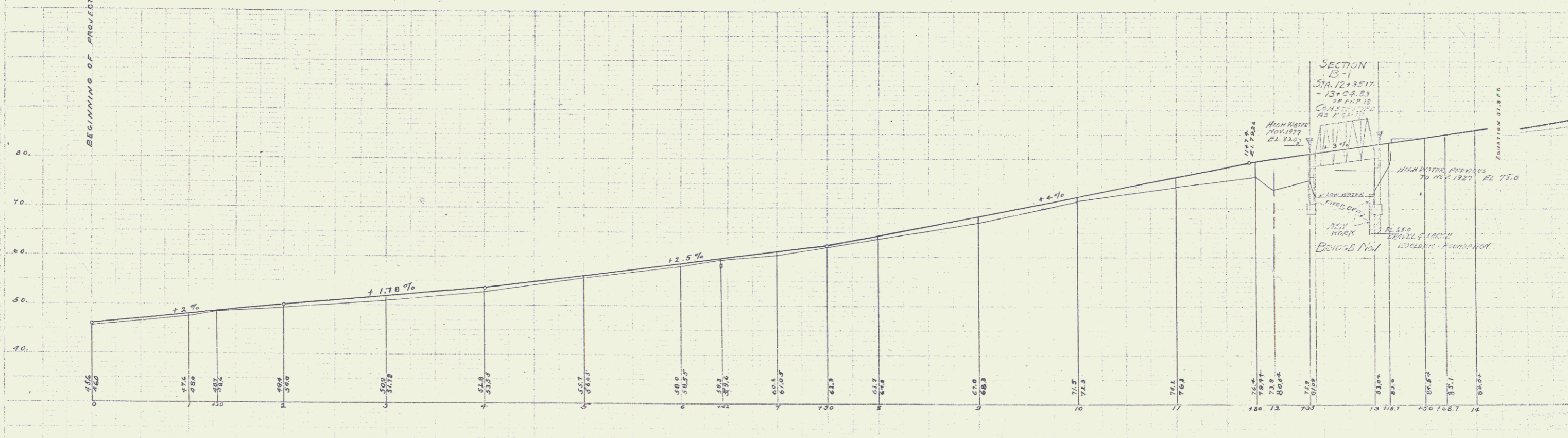
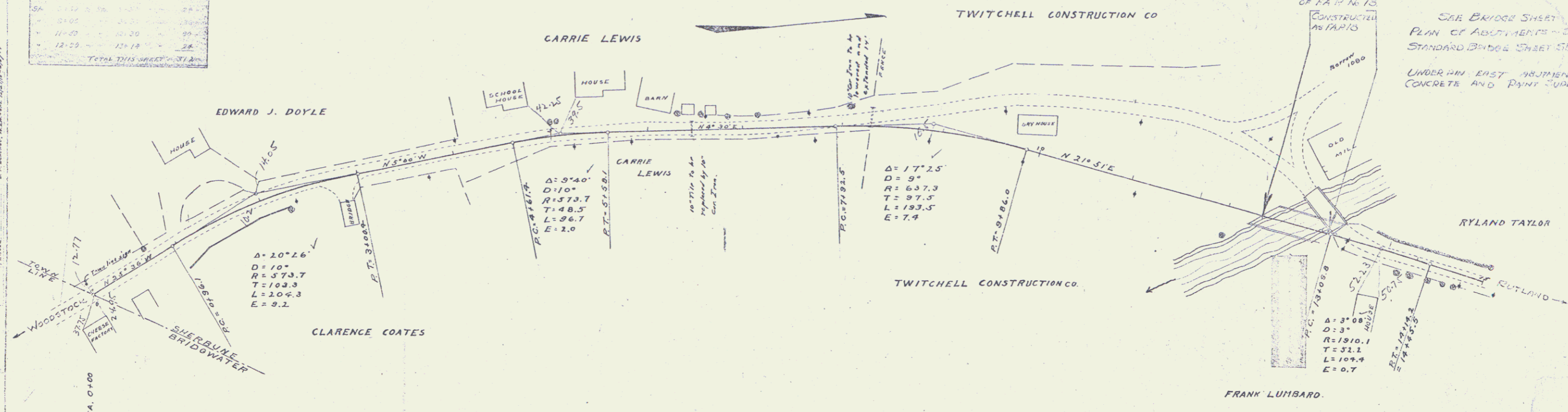


STATION	AREA	PERCENT	AREA
0+00	12.50	2.00	0.25
1+00	12.50	2.00	0.25
2+00	12.50	2.00	0.25
3+00	12.50	2.00	0.25
4+00	12.50	2.00	0.25
5+00	12.50	2.00	0.25
6+00	12.50	2.00	0.25
7+00	12.50	2.00	0.25
8+00	12.50	2.00	0.25
9+00	12.50	2.00	0.25
10+00	12.50	2.00	0.25
11+00	12.50	2.00	0.25
12+00	12.50	2.00	0.25
13+00	12.50	2.00	0.25
14+00	12.50	2.00	0.25
15+00	12.50	2.00	0.25
16+00	12.50	2.00	0.25
17+00	12.50	2.00	0.25
18+00	12.50	2.00	0.25
19+00	12.50	2.00	0.25
20+00	12.50	2.00	0.25
21+00	12.50	2.00	0.25
22+00	12.50	2.00	0.25
23+00	12.50	2.00	0.25
24+00	12.50	2.00	0.25
25+00	12.50	2.00	0.25
26+00	12.50	2.00	0.25
27+00	12.50	2.00	0.25
28+00	12.50	2.00	0.25
29+00	12.50	2.00	0.25
30+00	12.50	2.00	0.25
TOTAL THIS SHEET	375.00	2.00	0.25



B.M. 511 N.E. corner of E.J. Doyle E.I. 52.00 (assumed)
 B.M. 512 spike in N.E. corner of lot owned by Mr. Hill E.I. 82.01

Same as sheet 3 of project F10
 For bridge plans see project F18

SECTION B-1
 STA. 12+35.17 -
 13+04.83
 OF FA 18 N. 13
 FR SD 1928 3

SEE BRIDGE SHEET
 PLAN OF ADJUSTMENTS - CIVIL
 STANDARD BRIDGE SHEET 513
 UNDER AN EAST ADJUSTMENT WITH
 CONCRETE AND PAINT SUPERSTADLINE

SECTION B-1
 STA. 12+35.17 -
 13+04.83
 OF FA 18 N. 13
 FR SD 1928 3

