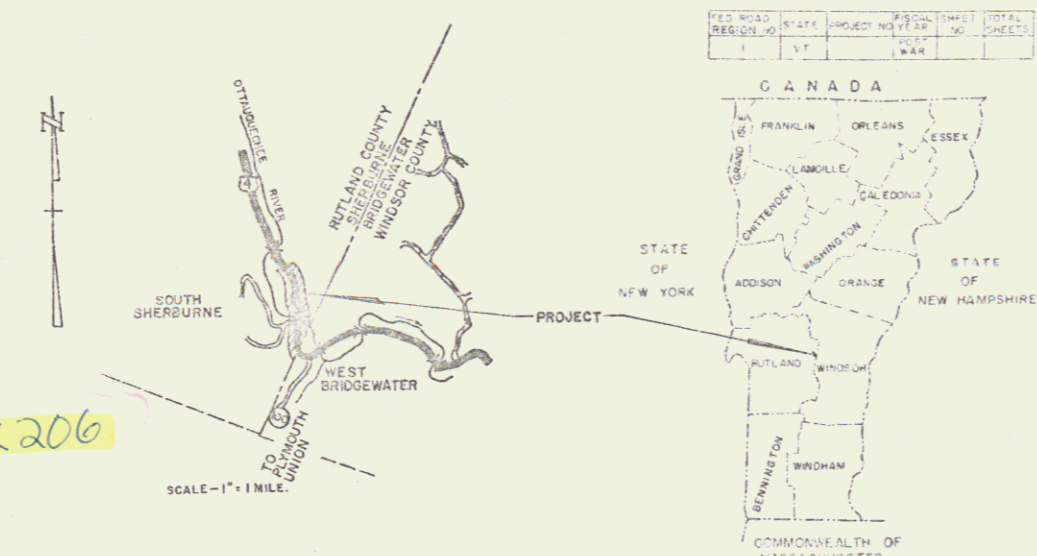


INDEX OF SHEETS

SHEET NO.	DESCRIPTION
1	TITLE PAGE.
2	TYPICAL CROSS-SECTION OF IMPROVEMENT.
3	QUANTITY SHEET (ITEMS).
4	QUANTITY SHEET (DRAINAGE).
5-6	EARTHWORK SHEETS.
7-10	PLAN AND PROFILE SHEETS.
11	A-21 DRILLING AND BASTING.
12	B-1 BANKING TABLES.
13	G-6 TYPICAL SLOPE GRADING.
14	C-1 BITUMINOUS CONCRETE CURB, TYPE 1.
15	D-1 PRECAST R.C.P. DROP INLETS.
16	D-2 C.R.M. HEADWALLS.
17	D-4 FLUSHING BASINS-UNDERDRAIN.
18	E-1 BARRICADES, SIGNS AND LIGHTS-ROADWAYS.
19	Q-3 THREE CABLE GUARD RAIL WITH STEEL POSTS.
20	G-4 STEEL MARKER POSTS & PLANK GUARD RAIL.
21	J-1 PROJECT AND BOUNDARY MARKERS.
22	PRELIMINARY INFORMATION SHEET-BRIDGE, STA. 93+50.
23	GENERAL PLAN, ELEVATION, PROFILES AND SECTIONS.
24	FRAMING PLAN, BORING LOGS AND TYPICAL BRIDGE SECTIONS.
25	ABUTMENT DETAILS, NO. 1 AND NO. 2.
26	PIER DETAILS, NO. 1 AND NO. 2.
27	APPROACH SLABS.
28	REINFORCING BAR SCHEDULE.
29	SB-20-50 BEARINGS AND STEEL DIAPHRAGMS.
30	SCB-30-50 SH. 1 AND SH. 2, SUPERSTRUCTURE.
31	SB-50-57 SH. 1 AND SH. 2, BRIDGE RAILING.
32	SB-AS-57 SQUARE.
33	SR-22-56 DETAIL OF EXPANSION JOINT OVER PIERS AND AT ABUTMENTS.
34-61	CROSS SECTIONS, ROADWAY.
62-63	CHANNEL SECTIONS, BRIDGE, STA. 93+50.
64-74	CHANNEL SECTIONS, RELOCATION (STA. 96+00 - 106+00 LT.)

STATE OF VERMONT
DEPARTMENT OF HIGHWAYS
Proposed Improvement
FEDERAL AID PRIMARY PROJECT
TOWN OF SHERBURNE
COUNTY OF RUTLAND
U.S. ROUTE 4
RUTLAND-WHITE RIVER JUNCT. ROAD

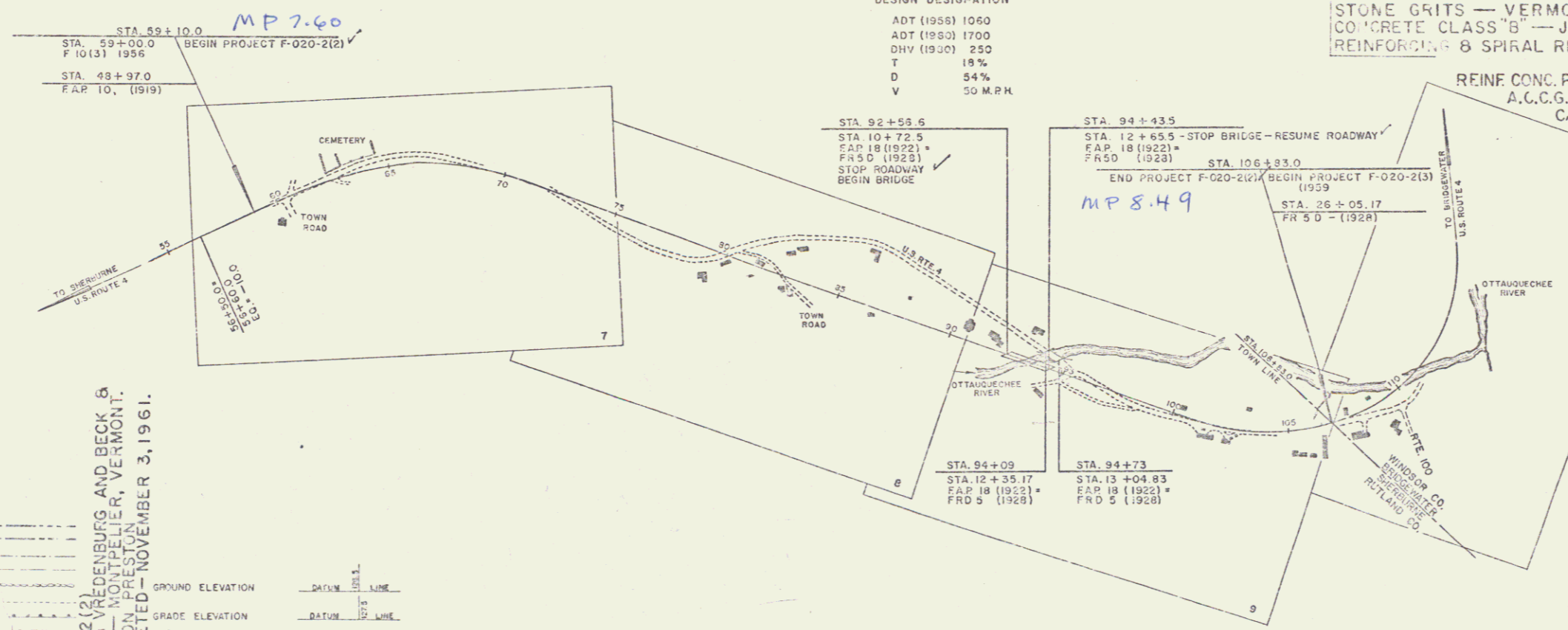


BEGINNING AT A POINT 4,773 FEET NORTHWESTERLY OF THE SHERBURNE-BRIDGewater TOWN LINE AND EXTENDING SOUTHEASTERLY 4,773 FEET.

LENGTH OF ROADWAY 4,596 FEET = 0.869 MILE
LENGTH OF BRIDGE 187 FEET = 0.035 MILE
LENGTH OF PROJECT 4,773 FEET = 0.904 MILE

DESIGN DESIGNATION

ADT (1955)	1060
ADT (1950)	1700
DHW (1950)	250
T	18%
D	54%
V	50 M.P.H.



PROJECT NAME & NUMBER TYPE PAVEMENT AREA
SHERBURNE - F 020-2(2) BIT. COJC. PAVMT. 12,953 S.Y.

RECORD PLANS MATERIALS
SUBBASE OF GRAVEL - EDGAR PIT - SHERBURNE, VERMONT.
SUB BASE OF SAND - PROJECT 61+00 RT. (THOMAS PIT) - SHERBURNE, VERMONT.
CRUSHED ROCK - PLYMOUTH NARROWS QUARRY - PLYMOUTH, VERMONT.
BITUMINOUS CONCRETE PAVEMENT, ASPHALTIC COATING & TAR EMULSION - BLAKTOP INC. - WEST LEBANON, NEW HAMPSHIRE.
REFINED TAR & CUTBACK ASPHALT - KOPPERS - E. PROVIDENCE, RHODE ISLAND.
PENETRATION ASPHALT - CRONIN - E. PROVIDENCE, RHODE ISLAND.
STONE GRITS - VERMONT MARBLE CO. - FLORENCE, VERMONT.
CONCRETE CLASS "B" - JOSEPH P. CARRARA PLANT - RUTLAND, VERMONT.
REINFORCING & SPIRAL REINFORCING STEEL - BETHLEHEM STEEL - CAMBRIDGE, MASS.

REINFORCING & SPIRAL REINFORCING STEEL - BETHLEHEM STEEL - CAMBRIDGE, MASS.
REPUBLIC STEEL CO. - SO. BOSTON, MASSACHUSETTS.
A.C.C.G. METAL PIPE - NORTHEASTERN CULVERT CO. - WESTMINSTER, VT.
CABLE GUARD RAIL, GUIDE & MARKER POSTS - S. T. GRISWOLD CO. INC. - ESSEX JUNCTION, VT.
STRUCTURAL STEEL & GALV. BRIDGE RAIL - BETHLEHEM STEEL CO. - CAMBRIDGE, MASSACHUSETTS.
CONTRACTOR - GEORGE & VREDEBURG AND BECK & BELLUCCI - MONTPELIER, VERMONT.
RES. ENG. - THOMAS PINELLO & WILSON PRESTON.
INSPECTOR - CHARLES BACON.
RECORD PLANS - WILSON PRESTON.
CONTRACT DATED - AUGUST 18, 1960.
STARTED - AUGUST 25, 1960.
COMPLETED - NOVEMBER 3, 1961.
ACCEPTED - NOVEMBER 3, 1961.

RIGHT-OF-WAY DIVISION
TOWN FILE
PERPETUAL
Town of US4
(To Be Returned To R.O.W. Division)

R.C. CO. TOL. ST. UNH. GU. TR. RE. CE. SU. CH. DR. PO. TO. AT.
PROJECT SHERBURNE
ROADWAY F-020-2(2)
TYPE 3 BITUMINOUS CONCRETE PAVEMENT
CONTRACTOR GEORGE & VREDEBURG AND BECK & BELLUCCI
MONTPELIER, VERMONT.
Increase Right-of-Way at a point 4,773 feet westerly of the
Bridgewater Town Line and extending southeasterly

CONTRACTOR GEORGE & VREDEBURG AND BECK & BELLUCCI
MONTPELIER, VERMONT.
RECORD PLANS - GEORGE & VREDEBURG AND BECK & BELLUCCI
MONTPELIER, VERMONT.
CONSTRUCTION COMPLETED - NOVEMBER 3, 1961.
1337

SCALES

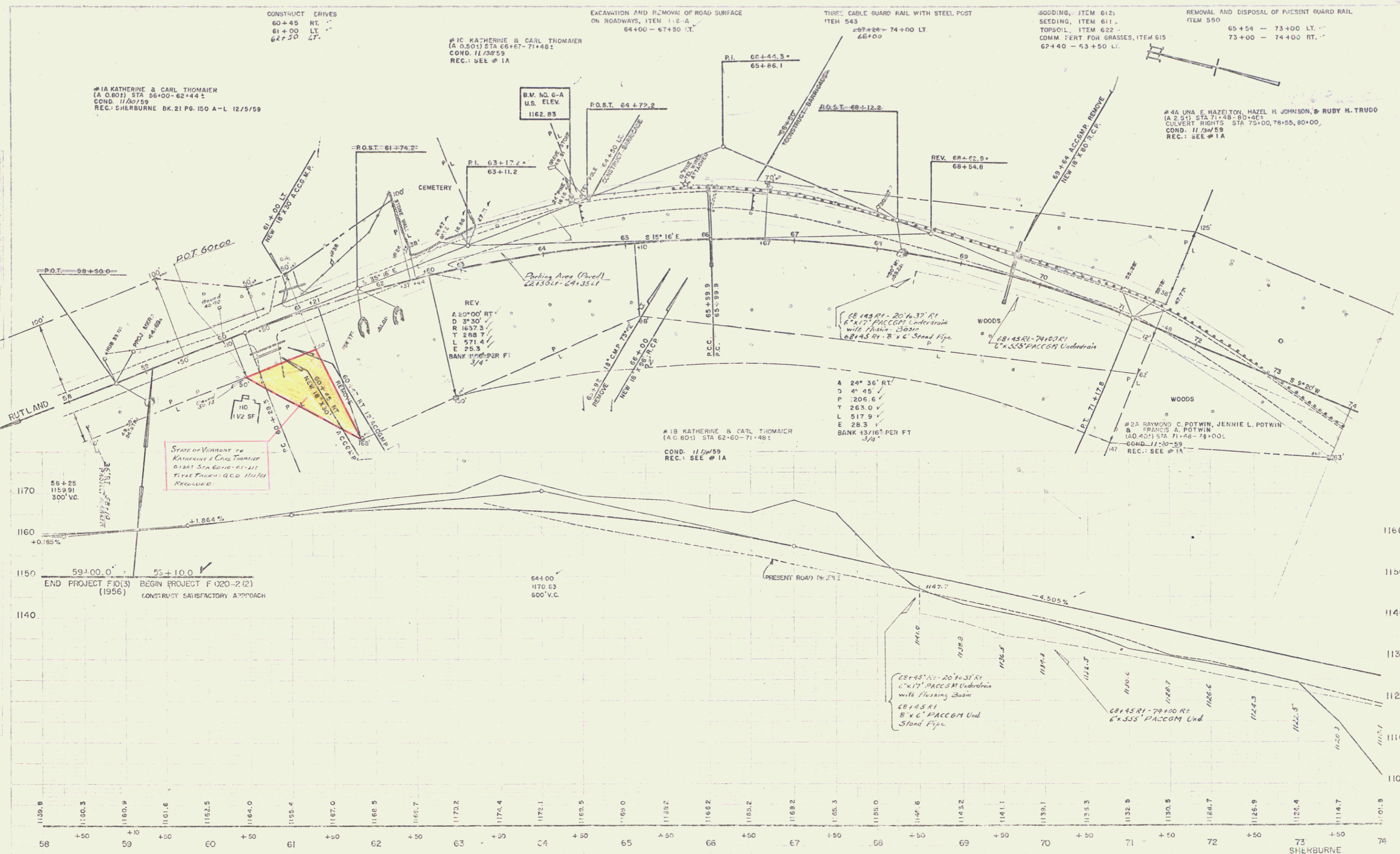
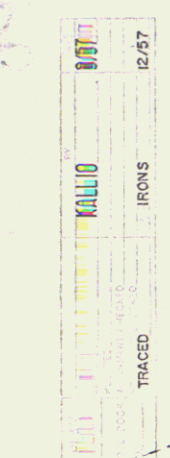
TITLE	1" = 300'
TYPICAL	1" = 2 2/3'
PLAN	1" = 50'
PROFILE HORIZONTAL	1" = 50'
PROFILE VERTICAL	1" = 10'
CROSS-SECTIONS	1" = 5' @ 10'

APPROVED [Signature] [Signature] [Signature] [Signature] [Signature] [Signature]
DATE 9/22/61 DATE 9/22/61 DATE 9/22/61 DATE 9/22/61 DATE 9/22/61 DATE 9/22/61

THESE PLANS ARE SUBJECT TO SUCH REVISIONS AS MAY BE REQUIRED BY THE BUREAU OF PUBLIC ROADS OR THE COMMISSIONER OF HIGHWAYS.
CONSTRUCTION IS TO BE CARRIED ON IN ACCORDANCE WITH THE PLANS AND THE STANDARD SPECIFICATIONS FOR HIGHWAY AND BRIDGE CONSTRUCTION OF JANUARY 1956 SUBMITTED TO THE BUREAU OF PUBLIC ROADS AS APPROVED JULY 8, 1956, INCLUDING ALL SUBSEQUENT APPROVED REVISIONS AND SUCH REVISED SPECIFICATIONS AND SPECIAL PROVISIONS AS ARE SUBMITTED WITH THE PLANS.

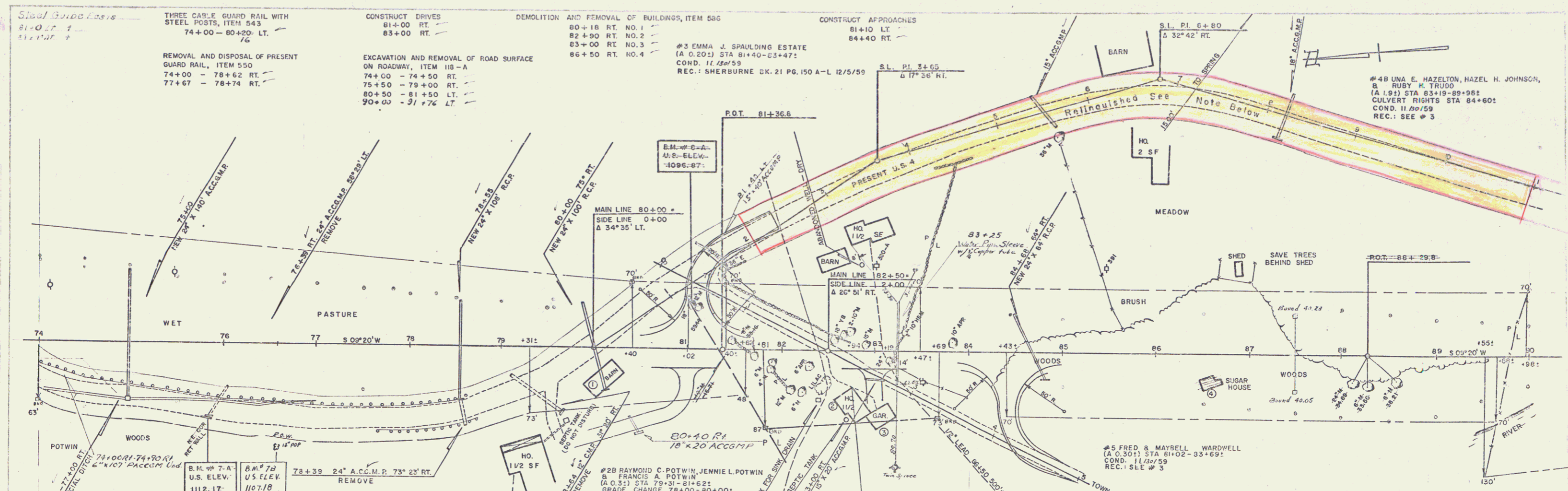
DEPARTMENT OF COMMERCE
BUREAU OF PUBLIC ROADS
DIVISION ENGINEER
PROJECT F 020-2(2)
SHEET 1 OF 74 SHEET 5

STEARNS R. JENKINS US4 1

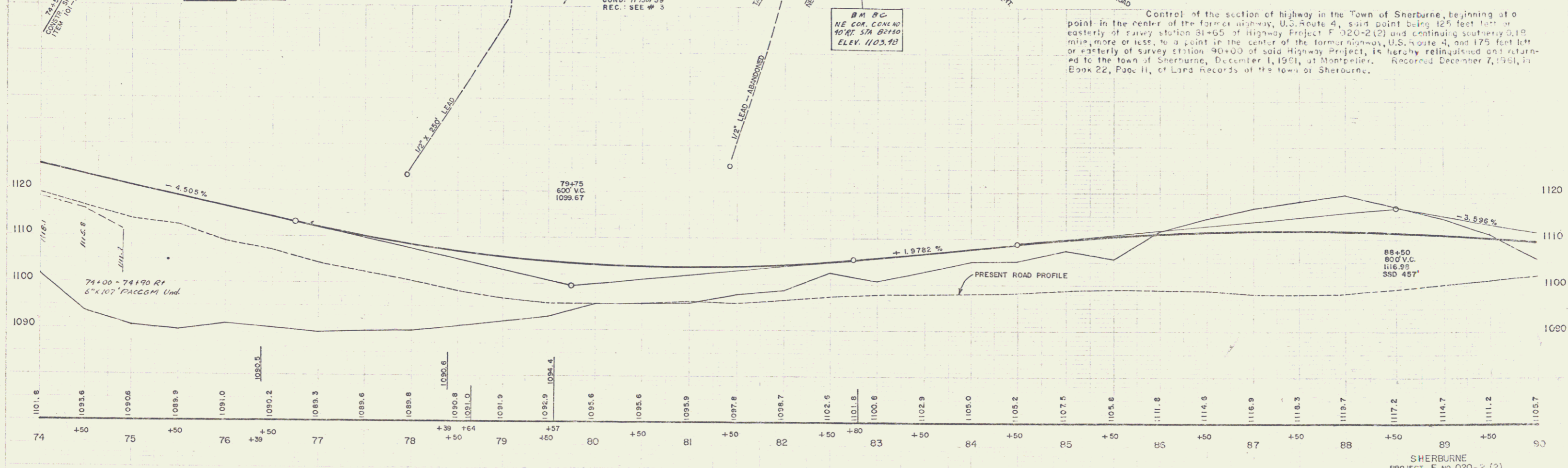


SHERBURNE
PROJECT F NO 020-2 (2)
SHEET 7 OF 74

9/57
12/57
KALLIO
IRONS
TRACED

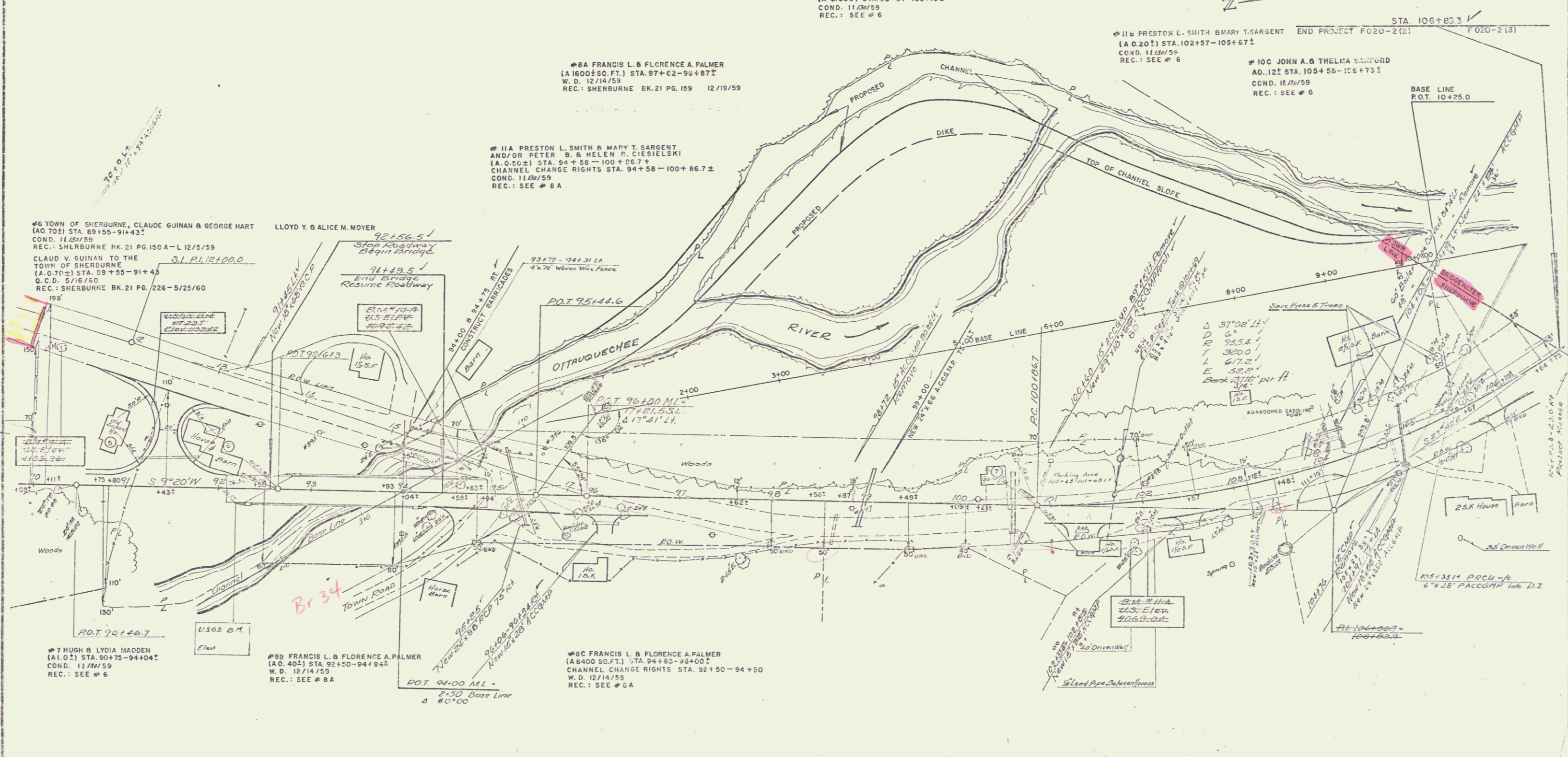


11/57
12/57
DRURY
BITTNER



3

<p>THREE CABLE GUARD RAIL WITH STEEL POSTS, ITEM 543.</p> <p>91+90 - 92+14 RT. 92+40 - 92+72 LT. 94+28 - 94+52 RT. 94+85.5 - 95+09.5 LT.</p> <p>Construct Approach 91+45 LT. 94+00 LT.</p> <p>Steel Guard Posts, ITEM 548B 91-50 LT. 2 93-00 LT. 2 99-00 RT. 1</p>	<p>Construct Drives</p> <p>96+20 RT. 101+34 RT. 102+50 RT. 104+17 LT. 105+90 RT. 92+64 LT. 103+30 RT. 106+80 RT. 106+83 LT.</p>	<p>Demolition and Removal of Buildings-Item 506</p> <p>90+90 LT. NO. 5 92+00 LT. NO. 6 100+50 LT. NO. 7</p>	<p>Plank Guard Rail ITEM 541-A 94+00 RT. 94+75 RT.</p>	<p>SOODING ITEM 612 SEEDING, ITEM 611 TOPSOIL, ITEM 621 COMMERCIAL FERT. FOR GRASSES, ITEM 615.</p> <p>REMOVAL AND DISPOSAL OF PRESENT GUARD RAIL, ITEM 550 93+80 - 93+92 LT. 94+09 - 94+26 LT. 94+61 - 94+89 LT. 94+87 - 95+43 LT.</p> <p>GRANITE CURB, ITEM 556-B 105+22-106+13 LT. 106+13-106+19 RT. 106+00-106+30 RT.</p>
--	---	---	--	---



SHERBURNE
F-020-2(2)
SHEET 3 OF 74 SHEETS