

THREE CABLE GUARD RAIL WITH STEEL POSTS, ITEM 543.
 91+90 - 92+14 RT.
 92+40 - 92+72 LT.
 94+28 - 94+52 RT.
 94+85.5 - 95+09.5 LT.

Construct Approach
 91+45 LT.
 94+00 LT.

Steel Guard Posts, ITEM 548B
 91-50 LT 2
 93-00 LT 2
 99-00 RT 1

Construct Drives
 96+20 RT
 101+34 RT
 102+50 RT
 104+17 LT
 105+90 RT
 92+64 LT
 103+30 RT
 106+80 RT
 106+83 LT.

Demolition and Removal of Buildings-Item 506
 90+90 LT. NO. 5
 92+00 LT. NO. 6
 100+50 LT. NO. 7

Plank Guard Rail
 94+00 RT.
 94+75 RT.

SOODING ITEM 612
 SEEDING, ITEM 611
 TOPSOIL, ITEM 621
 COMMERCIAL FERT. FOR GRASSES, ITEM 615.
 101+50 - 106+98

REMOVAL AND DISPOSAL OF PRESENT GUARD RAIL, ITEM 550
 93+80 - 93+92 LT.
 94+09 - 94+26 LT.
 94+61 - 94+89 LT.
 94+87 - 95+43 LT.

GRANITE CURB, ITEM 556-B
 105+22-106+13 LT.
 106+13-106+19 LT.
 106+00-106+30 RT.

#9 GUY E. & HAZEL J. WELCH
 (A 0.80) STA. 98+87-103+16
 COND. 11/30/59
 REC.: SEE # 6

#8A FRANCIS L. & FLORENCE A. PALMER
 (A 1600 SQ. FT.) STA. 97+62-99+87
 W. D. 12/14/59
 REC.: SHERBURNE BK. 21 PG. 159 12/19/59

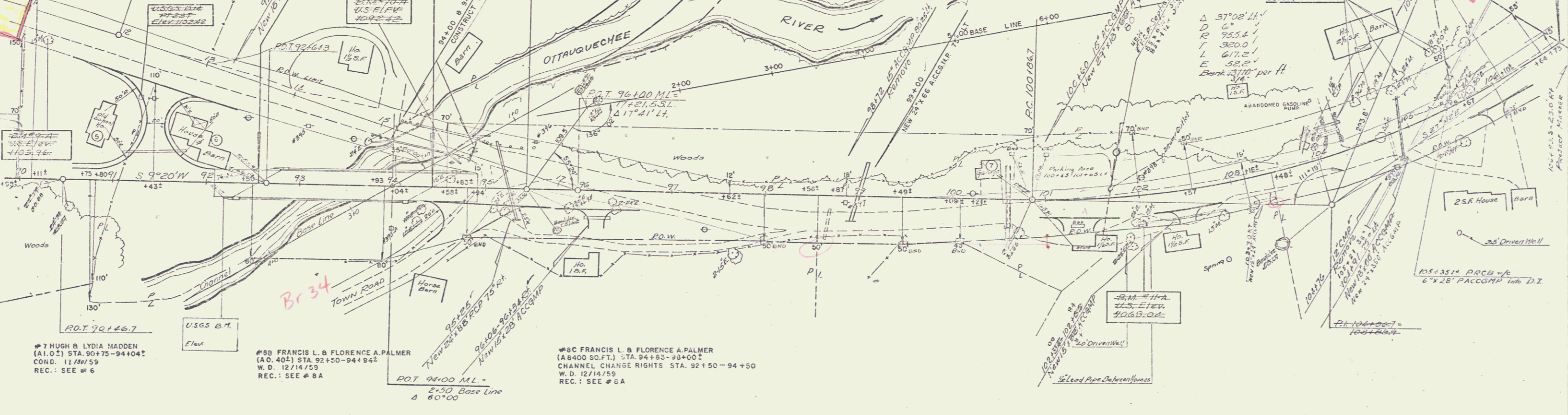
#11A PRESTON L. SMITH & MARY T. SARGENT
 AND/OR PETER B. & HELEN R. CIESIELSKI
 (A 0.20) STA. 94+58-100+06.7 +
 CHANNEL CHANGE RIGHTS STA. 94+58-100+86.7 ±
 COND. 11/30/59
 REC.: SEE # 8A

#11B PRESTON L. SMITH & MARY T. SARGENT
 (A 0.20) STA. 102+57-105+67
 COND. 11/30/59
 REC.: SEE # 6

#10C JOHN A. & THELMA SANFORD
 AD. 121 STA. 105+58-106+73
 COND. 11/30/59
 REC.: SEE # 6

#6 TOWN OF SHERBURNE, CLAUDE GUINAN & GEORGE HART
 (A 0.70) STA. 89+55-91+43
 COND. 11/29/59
 REC.: SHERBURNE BK. 21 PG. 150A-L 12/5/59

LLOYD Y. & ALICE M. MOYER
 92+56.5
 Stop Highway
 Begin Bridge
 91+13.5
 End Bridge
 Resume Roadway



#7 HUGH & LYDIA MADDEN
 (A 1.0) STA. 90+75-94+04
 COND. 11/30/59
 REC.: SEE # 6

#8B FRANCIS L. & FLORENCE A. PALMER
 (A 0.40) STA. 92+50-94+94
 W. D. 12/14/59
 REC.: SEE # 8A

#8C FRANCIS L. & FLORENCE A. PALMER
 (A 8400 SQ. FT.) STA. 94+83-98+00
 CHANNEL CHANGE RIGHTS STA. 92+50-94+50
 W. D. 12/14/59
 REC.: SEE # 6A

SHERBURNE
 F-020-2(2)
 SHEET 3 OF 74 SHEETS