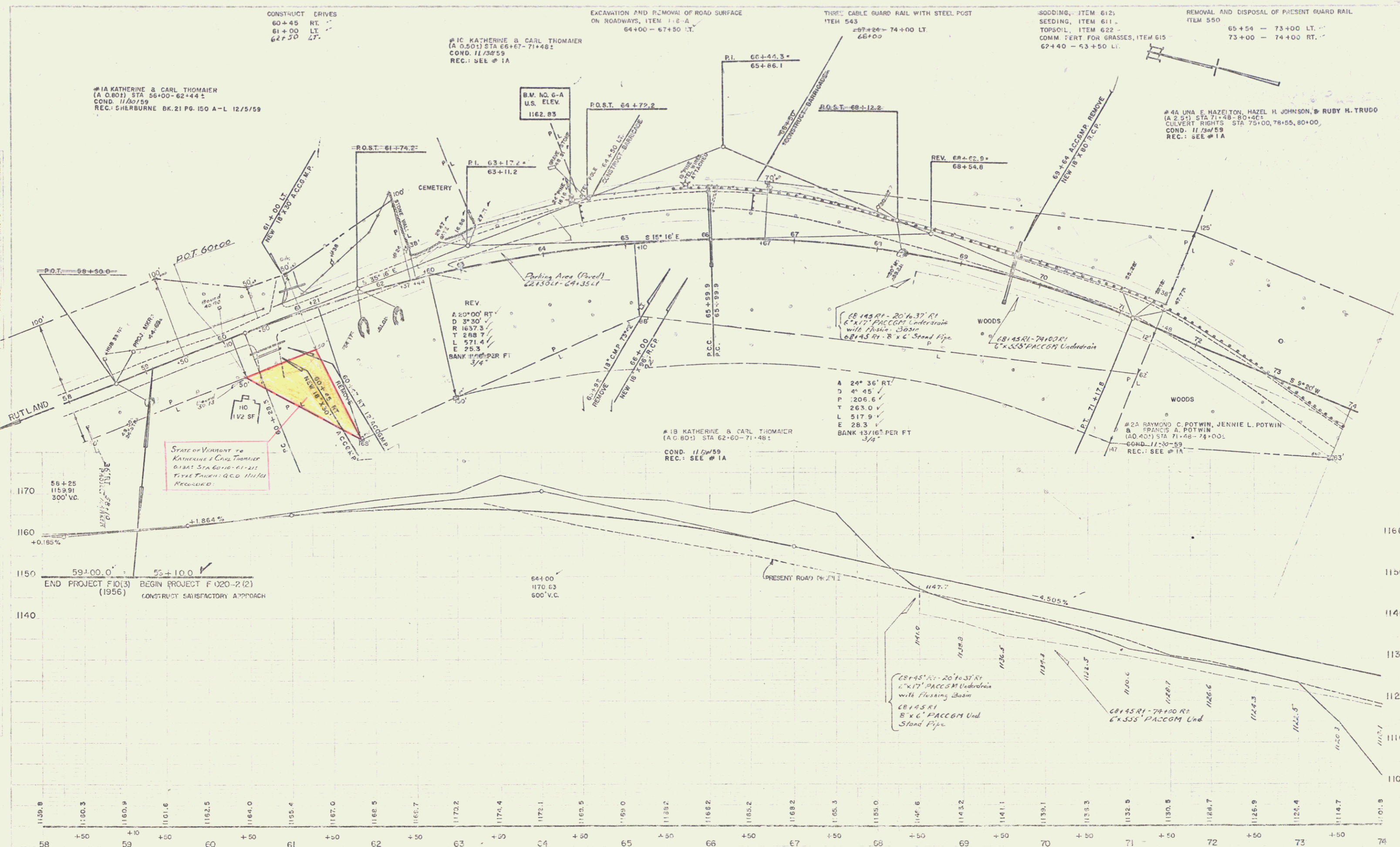


12/57
 IRONS
 12/57
 TRACED
 12/57
 BITUMEN



#1A KATHERINE & CARL THOMAIER
 (A.C. 801) STA 56+00 - 62+44.2
 COND. 11/28/59
 REC. GHERBURNE BK. 21 PG. 150 A-L 12/5/59

#1C KATHERINE & CARL THOMAIER
 (A.C. 801) STA 66+67 - 71+48.1
 COND. 11/28/59
 REC. SEE # 1A

EXCAVATION AND REMOVAL OF ROAD SURFACE
 ON ROADWAYS, ITEM 118-A
 64+00 - 67+50 LT.

THREE CABLE GUARD RAIL WITH STEEL POST
 ITEM 543
 67+00 - 74+00 LT.

SODDING, ITEM 612;
 SEEDING, ITEM 611;
 TOPSOIL, ITEM 622
 COMM. FERT. FOR GRASSES, ITEM 615
 67+40 - 73+50 LT.

REMOVAL AND DISPOSAL OF PRESENT GUARD RAIL
 ITEM 550
 65+50 - 73+00 LT.
 73+00 - 74+00 RT.

#4A JANA E. HAZELTON, HAZEL H. JOHNSON, RUBY H. TRUDO
 (A.C. 251) STA 71+48 - 80+46.5
 CULVERT RIGHTS STA 75+00, 78+55, 80+00
 COND. 11/28/59
 REC. SEE # 1A

#1B KATHERINE & CARL THOMAIER
 (A.C. 801) STA 62+60 - 71+48.1
 COND. 11/28/59
 REC. SEE # 1A

#2A RAYMOND C. POTWIN, JENNIE L. POTWIN
 & FRANCIS A. POTWIN
 (A.C. 401) STA 71+48 - 74+00.1
 COND. 11/28/59
 REC. SEE # 1A

State of Vermont vs
 KATHERINE & CARL THOMAIER
 CIVIL STA 60+10 - 61+15
 FILE THROUGH GEO. 11/1/61
 RECORDED

A 24° 36' RT.
 D 4' 45"
 P 206.6
 T 263.0
 L 517.9
 E 28.3
 BANK 13/16" PER FT

CB 45" RI - 20' x 31" RI
 6" x 17" PACCOM Underdrain
 with Flexing Basin

CB 45" RI - 74+00 RI
 6" x 35" PACCOM Und
 Stand Pipe