

- INDEX OF SHEETS**
- SHEET NO. 1- TITILE PAGE
 - 2- VERTICAL CURVE SECTION OF IMPROVEMENT
 - 3- PAVING AND FINISHING TABLES
 - 4- QUANTITY SHEET - ITEMS
 - 5- QUANTITY SHEET - MATERIALS
 - 6- CONTRACT NOTES
 - 7- PLAN AND PROFILE SHEETS
 - 8- PRELIMINARY INFORMATION SHEET
 - 9- DETAILS OF SUPERSTRUCTURE
 - 10- DETAILS OF RAILINGS
 - 11- DETAILS OF ABUTMENTS #1 & 2
 - 12- FINISHING STEEL SCHEDULE
 - 13- EXISTENCE SHEET EXHIBIT (EXCAVATION & STONE FILL)
 - 14- STANDARD STRUCTURE SHEET - CD-2
 - 15- STANDARD STRUCTURE SHEET - SD-2
 - 16- STANDARD STRUCTURE SHEET - SD-3
 - 17- STANDARD STRUCTURE SHEET - SD-4
 - 18- STANDARD STRUCTURE SHEET - SD-5
 - 19- STANDARD STRUCTURE SHEET - SD-6
 - 20- STANDARD STRUCTURE SHEET - SD-7
 - 21- STANDARD STRUCTURE SHEET - SD-8
 - 22- STANDARD STRUCTURE SHEET - SD-9
 - 23- STANDARD STRUCTURE SHEET - SD-10
 - 24- STANDARD STRUCTURE SHEET - SD-11
 - 25- STANDARD STRUCTURE SHEET - SD-12
 - 26- STANDARD STRUCTURE SHEET - SD-13
 - 27- STANDARD STRUCTURE SHEET - SD-14
 - 28- STANDARD STRUCTURE SHEET - SD-15
 - 29- STANDARD STRUCTURE SHEET - SD-16
 - 30- STANDARD STRUCTURE SHEET - SD-17
 - 31- STANDARD STRUCTURE SHEET - SD-18
 - 32- STANDARD STRUCTURE SHEET - SD-19
 - 33- STANDARD STRUCTURE SHEET - SD-20
 - 34- STANDARD STRUCTURE SHEET - SD-21
 - 35- STANDARD STRUCTURE SHEET - SD-22
 - 36- STANDARD STRUCTURE SHEET - SD-23
 - 37- STANDARD STRUCTURE SHEET - SD-24
 - 38- STANDARD STRUCTURE SHEET - SD-25
 - 39- STANDARD STRUCTURE SHEET - SD-26
 - 40- STANDARD STRUCTURE SHEET - SD-27
 - 41- STANDARD STRUCTURE SHEET - SD-28
 - 42- STANDARD STRUCTURE SHEET - SD-29
 - 43- STANDARD STRUCTURE SHEET - SD-30
 - 44- STANDARD STRUCTURE SHEET - SD-31
 - 45- STANDARD STRUCTURE SHEET - SD-32
 - 46- STANDARD STRUCTURE SHEET - SD-33
 - 47- STANDARD STRUCTURE SHEET - SD-34
 - 48- STANDARD STRUCTURE SHEET - SD-35
 - 49- STANDARD STRUCTURE SHEET - SD-36
 - 50- STANDARD STRUCTURE SHEET - SD-37
 - 51- STANDARD STRUCTURE SHEET - SD-38
 - 52- STANDARD STRUCTURE SHEET - SD-39
 - 53- STANDARD STRUCTURE SHEET - SD-40
 - 54- STANDARD STRUCTURE SHEET - SD-41
 - 55- STANDARD STRUCTURE SHEET - SD-42
 - 56- STANDARD STRUCTURE SHEET - SD-43
 - 57- STANDARD STRUCTURE SHEET - SD-44
 - 58- STANDARD STRUCTURE SHEET - SD-45
 - 59- STANDARD STRUCTURE SHEET - SD-46
 - 60- STANDARD STRUCTURE SHEET - SD-47
 - 61- STANDARD STRUCTURE SHEET - SD-48
 - 62- STANDARD STRUCTURE SHEET - SD-49
 - 63- STANDARD STRUCTURE SHEET - SD-50
 - 64- STANDARD STRUCTURE SHEET - SD-51
 - 65- STANDARD STRUCTURE SHEET - SD-52
 - 66- STANDARD STRUCTURE SHEET - SD-53
 - 67- STANDARD STRUCTURE SHEET - SD-54
 - 68- STANDARD STRUCTURE SHEET - SD-55
 - 69- STANDARD STRUCTURE SHEET - SD-56
 - 70- STANDARD STRUCTURE SHEET - SD-57
 - 71- STANDARD STRUCTURE SHEET - SD-58
 - 72- STANDARD STRUCTURE SHEET - SD-59
 - 73- STANDARD STRUCTURE SHEET - SD-60
 - 74- STANDARD STRUCTURE SHEET - SD-61
 - 75- STANDARD STRUCTURE SHEET - SD-62
 - 76- STANDARD STRUCTURE SHEET - SD-63
 - 77- STANDARD STRUCTURE SHEET - SD-64
 - 78- STANDARD STRUCTURE SHEET - SD-65
 - 79- STANDARD STRUCTURE SHEET - SD-66
 - 80- STANDARD STRUCTURE SHEET - SD-67
 - 81- STANDARD STRUCTURE SHEET - SD-68
 - 82- STANDARD STRUCTURE SHEET - SD-69
 - 83- STANDARD STRUCTURE SHEET - SD-70
 - 84- STANDARD STRUCTURE SHEET - SD-71
 - 85- STANDARD STRUCTURE SHEET - SD-72
 - 86- STANDARD STRUCTURE SHEET - SD-73
 - 87- STANDARD STRUCTURE SHEET - SD-74
 - 88- STANDARD STRUCTURE SHEET - SD-75
 - 89- STANDARD STRUCTURE SHEET - SD-76
 - 90- STANDARD STRUCTURE SHEET - SD-77
 - 91- STANDARD STRUCTURE SHEET - SD-78
 - 92- STANDARD STRUCTURE SHEET - SD-79
 - 93- STANDARD STRUCTURE SHEET - SD-80
 - 94- STANDARD STRUCTURE SHEET - SD-81
 - 95- STANDARD STRUCTURE SHEET - SD-82
 - 96- STANDARD STRUCTURE SHEET - SD-83
 - 97- STANDARD STRUCTURE SHEET - SD-84
 - 98- STANDARD STRUCTURE SHEET - SD-85
 - 99- STANDARD STRUCTURE SHEET - SD-86
 - 100- STANDARD STRUCTURE SHEET - SD-87

STANDARD STRUCTURE SHEET APPROVED BY THE CHIEF ENGINEER
 VERMONT STATE DEPARTMENT OF HIGHWAYS,
 5470 JUNE 10, 1950

PROJECT NAME & NUMBER	TYPE	PAVEMENT AREA
SHERBURNE F-10(3)	3 Caravel M.P.P.	4.11, S.Y.
RECORD PLANS		
MATERIALS		
Sub-base - Crushed & Screened Gravel - Loc. No. 103	Structural Steel - Vermont Structural Co., Burlington, VT	
Crushed Stone - 1/2" - 3/4" - Loc. No. 103	R.C.P. - Vermont Concrete Pipe Co., Windsor, VT	
Reinforcing Steel - Brierley, Cambridge, Mass.	A.C.C.A.M. - R.E. Metal Culvert Type Co., Palmer, Mass.	
Timber Piling - Loc. No. 103	Timber Piling (Treated) - Rogers, Nashua, N.H.	
Concrete - Loc. No. 103	Cable for Guard Rail - Babington Steel Corp., Brimley, Pa.	
Gravel - Loc. No. 103	Guard Rail Post - Brierley, Cambridge, Mass.	
Water Proof - Loc. No. 103	Water Proof - P.T. Water, Waterbury, Mass.	
CONTRACTOR: <u>W.C. Woodbury - Bennington</u>	CONTRACT DATED <u>May 11, 1955</u>	
RESIDENT ENGINEER: <u>D.W. Miller</u>	CONTRACT STARTED <u>May 23, 1955</u>	
INSPECTORS: <u>W. Henry, M. Oytan</u>	CONTRACT COMPLETED <u>Aug. 11, 1956</u>	
RECORD PLANS: <u>H.A. Piché 5-28-57</u>	CONTRACT ACCEPTED <u>Aug. 11, 1956</u>	

STATE OF VERMONT DEPARTMENT OF HIGHWAYS

PROPOSED IMPROVEMENT

FEDERAL AID PROJECT

TOWN OF SHERBURNE COUNTY OF RUTLAND U.S. ROUTE 4 RUTLAND-WOODSTOCK ROAD Pin # 99R205

BEGINNING AT A POINT 10,361 FEET NORTH OF THE BRIDGE-WATER-SHERBURNE TOWN LINE AND EXTENDING SOUTHERLY 5,389.8 FEET, INCLUDING BRIDGE (STAS. 54+77.0-55+46.0)

LENGTH OF ROADWAY 5320.8 FT. = 1.008 MI.
 LENGTH OF BRIDGE 69.0 FT. = 0.013 MI.
 LENGTH OF PROJECT 5389.8 FT. = 1.021 MI.

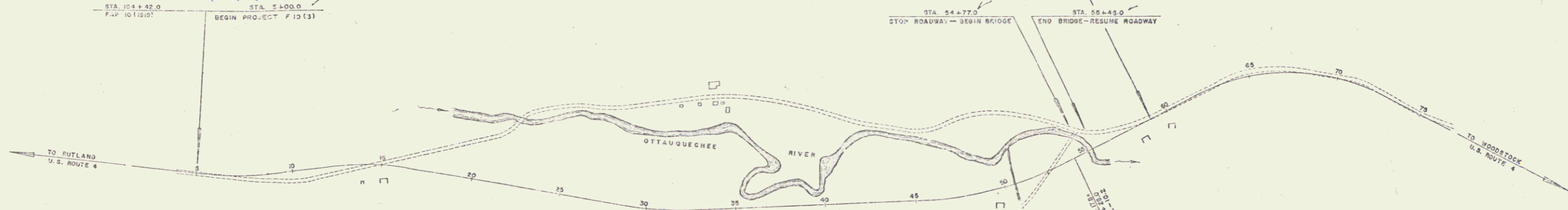


MP 6.58

STA. 104+42.0
 F&P 101910
 BEGIN PROJECT F 10(13)

MP 7.60

STA. 54+77.0
 END PROJECT F 10(13)
 STA. 55+46.0
 F&P 101910



SYMBOL	DESCRIPTION
(Symbol)	STONE WALL
(Symbol)	OPENED PIPE
(Symbol)	GUARD RAIL
(Symbol)	RAILROAD
(Symbol)	RETAIN WALL
(Symbol)	CENTER LINE
(Symbol)	SURVEY LINE
(Symbol)	CULVERT
(Symbol)	DRAW INLET
(Symbol)	TROLLEY POLE
(Symbol)	POWER POLE
(Symbol)	TELEPHONE POLE
(Symbol)	TREES
(Symbol)	HEDGE

SCALES

1" = 50'
1" = 20'
1" = 10'
1" = 5'

ORITICAL POINTS
 CHORIZONTAL
 VERTICAL

RIGHT-OF-WAY DIVISION
 TOWN FILE
 PERPETUAL
 Town of US 4
 (To Be Returned To R.O.W. Division)

THESE PLANS ARE SUBJECT TO SUCH REVISIONS AS MAY BE REQUIRED BY THE BUREAU OF PUBLIC ROADS OR THE COMMISSIONER OF HIGHWAYS.

CONSTRUCTION IS TO BE CARRIED ON IN ACCORDANCE WITH THE PLANS AND THE STANDARD ROAD AND BRIDGE SPECIFICATIONS OF 1944, AS APPROVED JULY 25, 1949 BY THE BUREAU OF PUBLIC ROADS, INCLUDING ALL SUBSEQUENT APPROVED REVISIONS AND SUCH REVISED SPECIFICATIONS AND SPECIAL PROVISIONS AS ARE SUBMITTED WITH THE PLANS.

APPROVED: <u>H.L. White</u> SUPERVISOR PROJECT DATE: <u>2-4-55</u>	APPROVED: <u>...</u> DATE: <u>JAN 7 1955</u>	APPROVED: <u>...</u> DATE: <u>2/10/55</u>	APPROVED: <u>...</u> DATE: <u>MAY 7 1955</u>	APPROVED: <u>H.A. August</u> DATE: <u>FEB 4 1956</u>
--	---	--	---	---

STEARNS R. JENKINS - US 4 1

NOTE: ANY FURTHER INFORMATION CONCERNING THIS PROJECT, INCLUDING PROVISIONS RELATIVE TO THIS PROJECT MAY BE FOUND IN EITHER THE FIELD BOOK OR THE RECORD FILE.

DEPARTMENT OF COMMERCE
 BUREAU OF PUBLIC ROADS

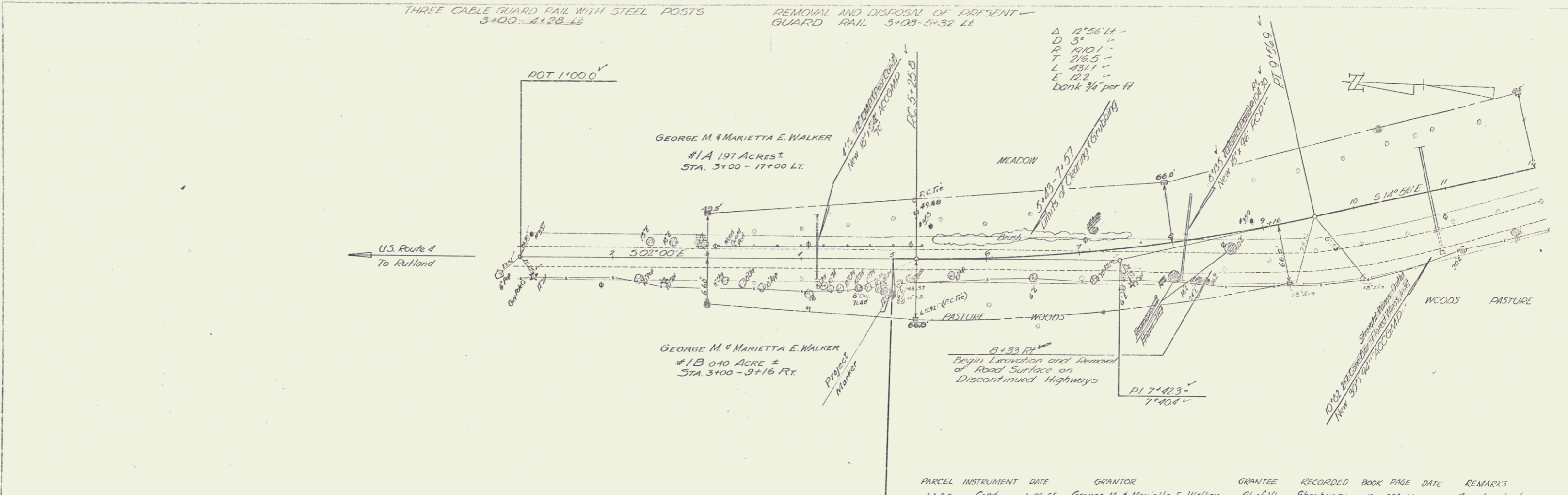
APPROVE: _____
 DISTRICT ENGINEER DATE: _____

PROJECT: F 10(13)

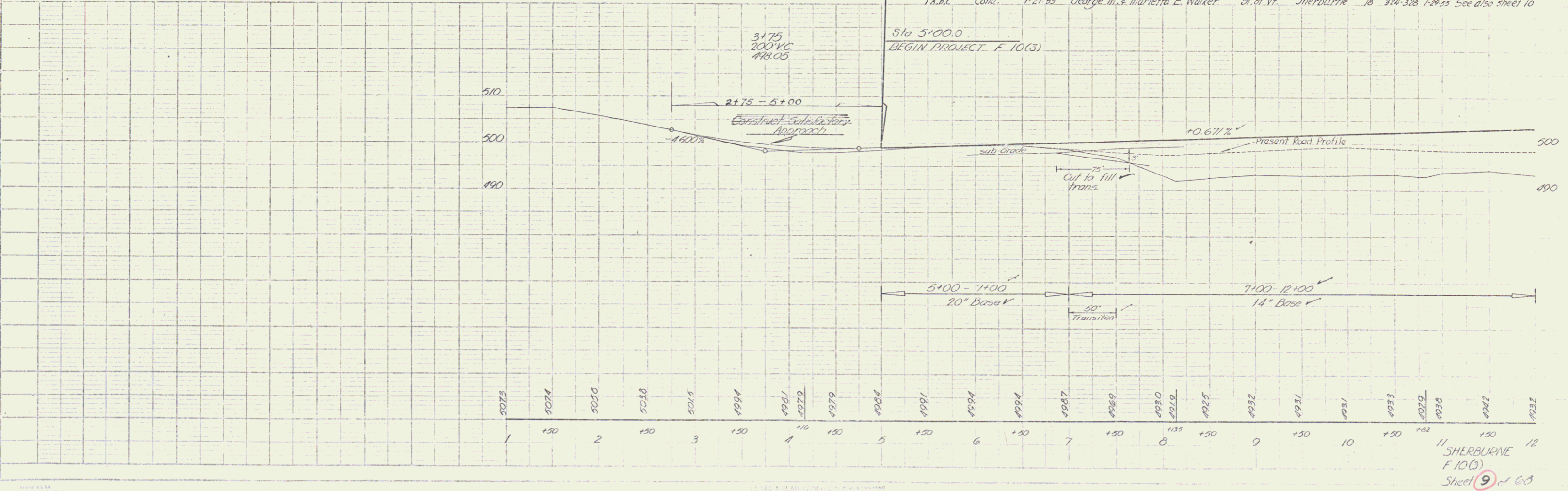
SHEET 1 OF 68 SHEETS

FILED
 PROJECT
 SHEET NO. 9
 SHEET 9 OF 12

FILED
 PROJECT
 SHEET NO. 9
 SHEET 9 OF 12



PARCEL INSTRUMENT DATE	GRANTOR	GRANTEE	RECORDED BOOK PAGE DATE	REMARKS
I.A.B.C. Cont. 1-27-85	George M. & Marietta E. Walker	St. of Vt. Sherburne	10 324-328 1-29-85	See also sheet 10



11 SHERBURNE
 F 10(3)
 Sheet 9 of 12

STEEL GUIDE POSTS
12+50 - 14+30 Lt.

CONSTRUCT DRIVES
14+20 R/L
14+15 R/L - 15+10 R/L - 15+75 R/L
25+00 R/L - 25+50 L/L

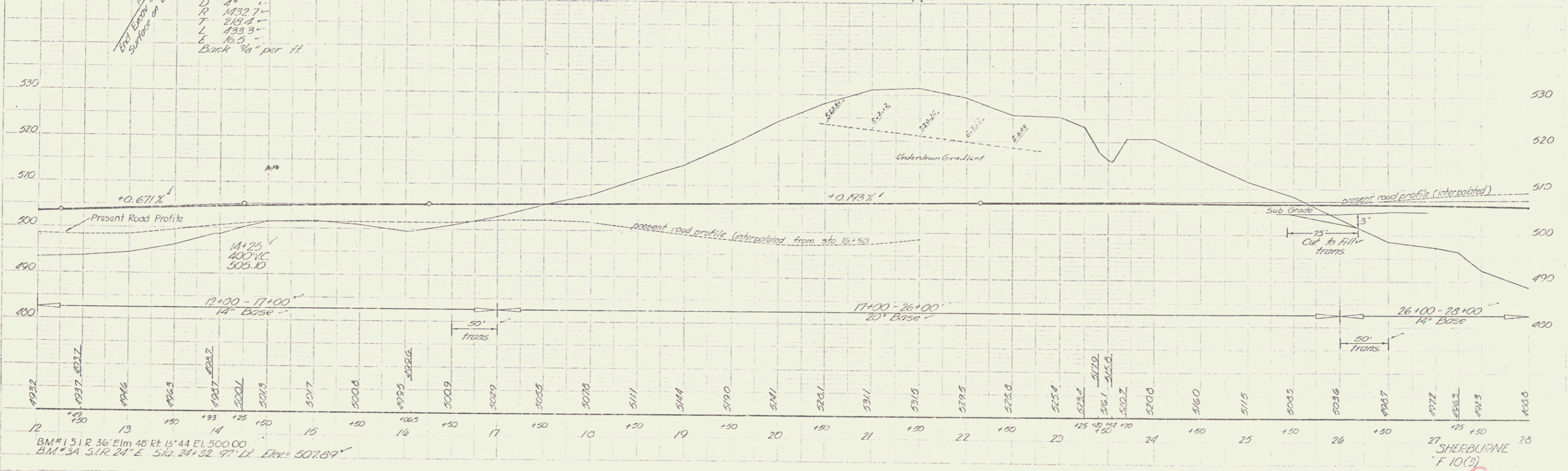
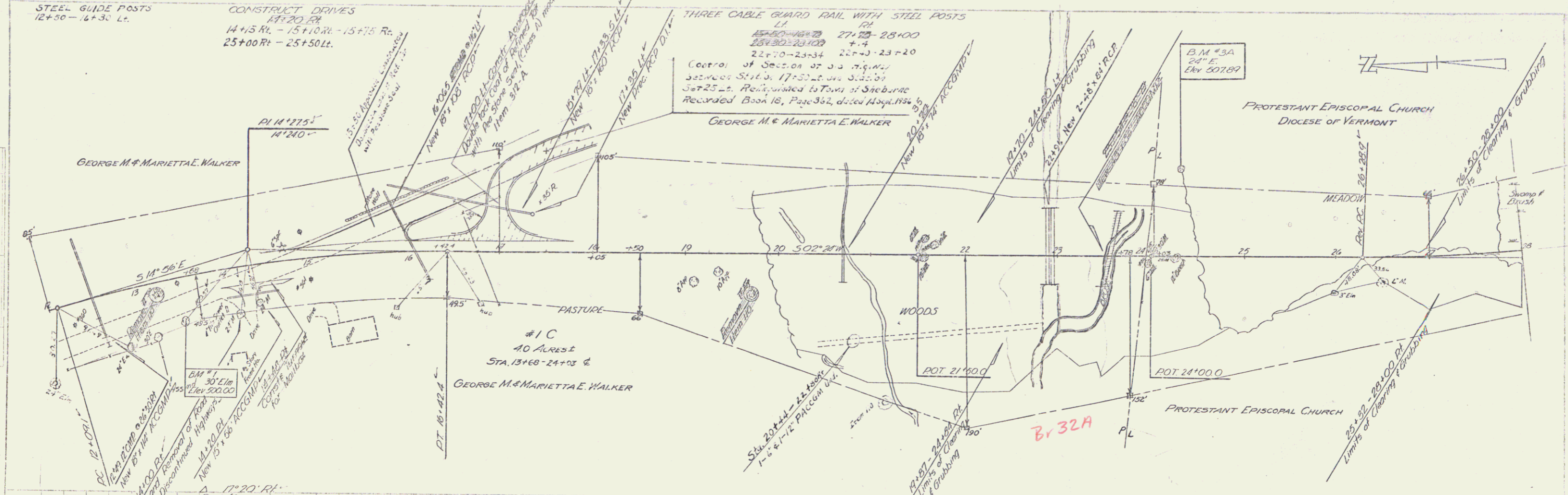
THREE CABLE GUARD RAIL WITH STEEL POSTS
14+20 - 28+00
15+30 - 23+00
22+70 - 23+34
22+70 - 23+20

Control of Section of ...
Set 25 ...
Recorded Book 18, Page 352, dated May 1894 by
GEORGE M. & MARIETTA E. WALKER

B.M. #3A
24" E.
Elev. 507.89

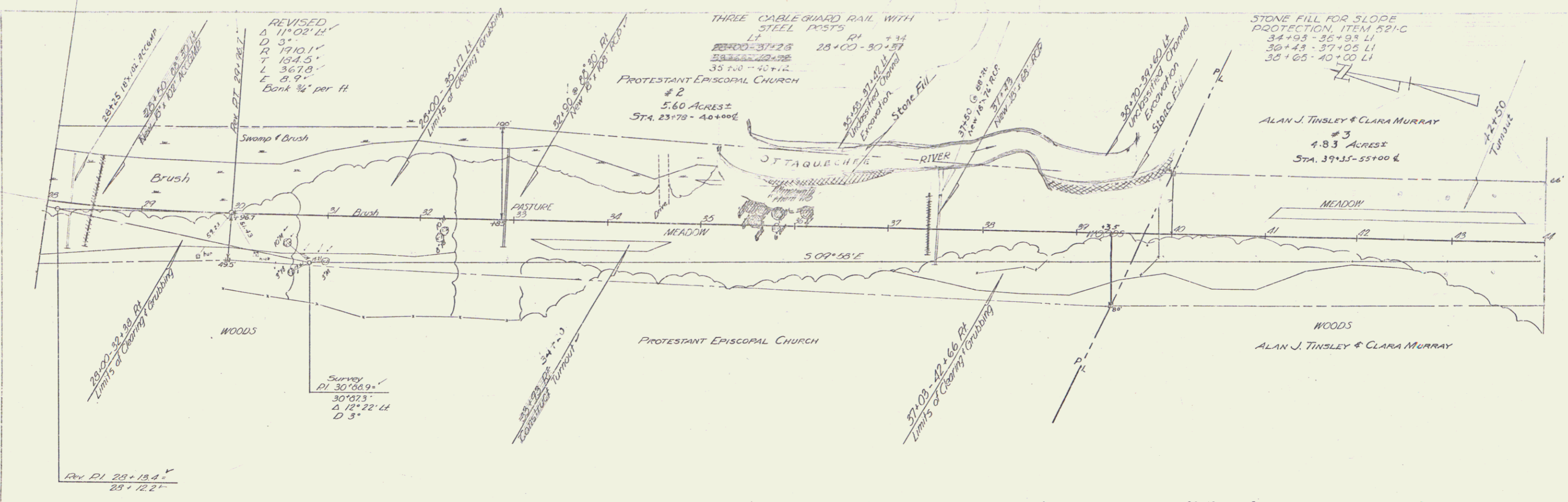
PROTESTANT EPISCOPAL CHURCH
DIOCESE OF VERMONT

Vertical Curve Data:
+0.671%
+0.193%
14+25
100' VC
500.10



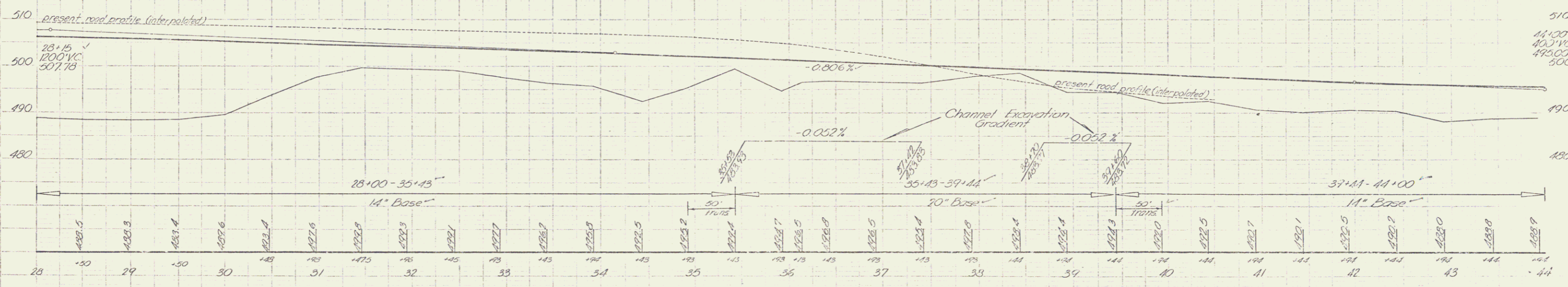
BM#151R 36" Elm 48" Rt 13' 44" El. 500.00
BM#3A 51R 24" E. 516 24' 32" 97" Lt. Elev. 507.89

SHERBURNE
F 10(3)
Sheet 10 of 60

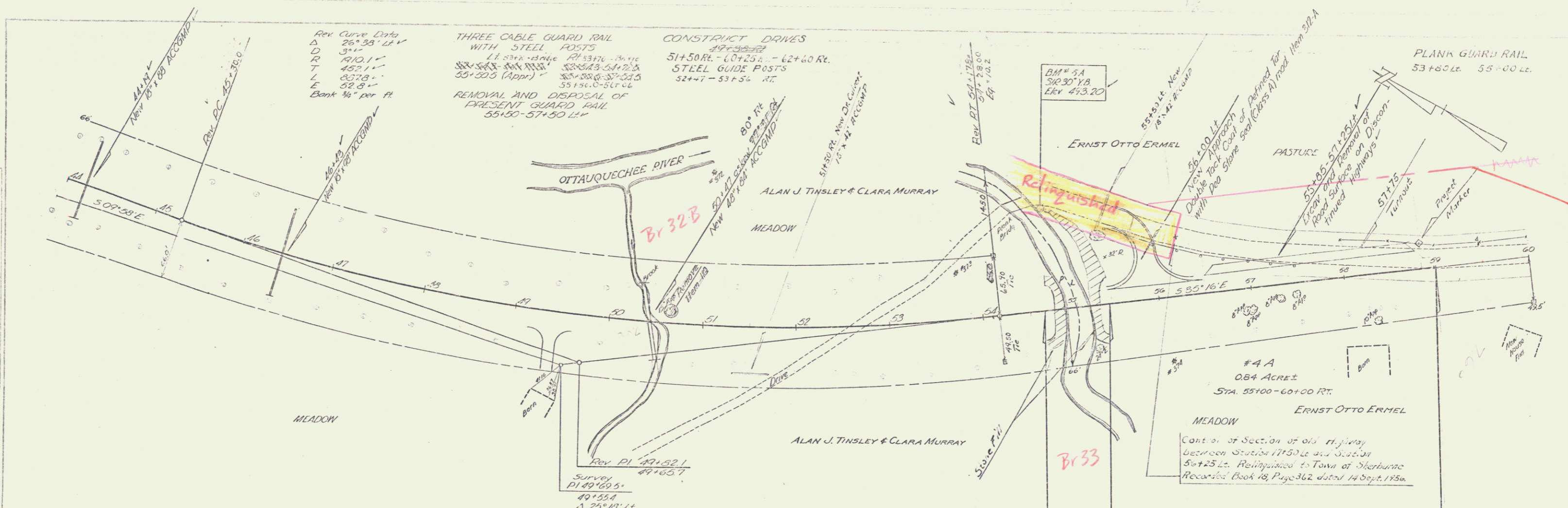


REVISIONS
 1. 11/15/55
 2. 11/15/55
 3. 11/15/55
 4. 11/15/55
 5. 11/15/55
 6. 11/15/55
 7. 11/15/55
 8. 11/15/55
 9. 11/15/55
 10. 11/15/55
 11. 11/15/55
 12. 11/15/55
 13. 11/15/55
 14. 11/15/55
 15. 11/15/55
 16. 11/15/55
 17. 11/15/55
 18. 11/15/55
 19. 11/15/55
 20. 11/15/55
 21. 11/15/55
 22. 11/15/55
 23. 11/15/55
 24. 11/15/55
 25. 11/15/55
 26. 11/15/55
 27. 11/15/55
 28. 11/15/55
 29. 11/15/55
 30. 11/15/55
 31. 11/15/55
 32. 11/15/55
 33. 11/15/55
 34. 11/15/55
 35. 11/15/55
 36. 11/15/55
 37. 11/15/55
 38. 11/15/55
 39. 11/15/55
 40. 11/15/55
 41. 11/15/55
 42. 11/15/55
 43. 11/15/55
 44. 11/15/55
 45. 11/15/55
 46. 11/15/55
 47. 11/15/55
 48. 11/15/55
 49. 11/15/55
 50. 11/15/55
 51. 11/15/55
 52. 11/15/55
 53. 11/15/55
 54. 11/15/55
 55. 11/15/55
 56. 11/15/55
 57. 11/15/55
 58. 11/15/55
 59. 11/15/55
 60. 11/15/55
 61. 11/15/55
 62. 11/15/55
 63. 11/15/55
 64. 11/15/55
 65. 11/15/55
 66. 11/15/55
 67. 11/15/55
 68. 11/15/55
 69. 11/15/55
 70. 11/15/55
 71. 11/15/55
 72. 11/15/55
 73. 11/15/55
 74. 11/15/55
 75. 11/15/55
 76. 11/15/55
 77. 11/15/55
 78. 11/15/55
 79. 11/15/55
 80. 11/15/55
 81. 11/15/55
 82. 11/15/55
 83. 11/15/55
 84. 11/15/55
 85. 11/15/55
 86. 11/15/55
 87. 11/15/55
 88. 11/15/55
 89. 11/15/55
 90. 11/15/55
 91. 11/15/55
 92. 11/15/55
 93. 11/15/55
 94. 11/15/55
 95. 11/15/55
 96. 11/15/55
 97. 11/15/55
 98. 11/15/55
 99. 11/15/55
 100. 11/15/55

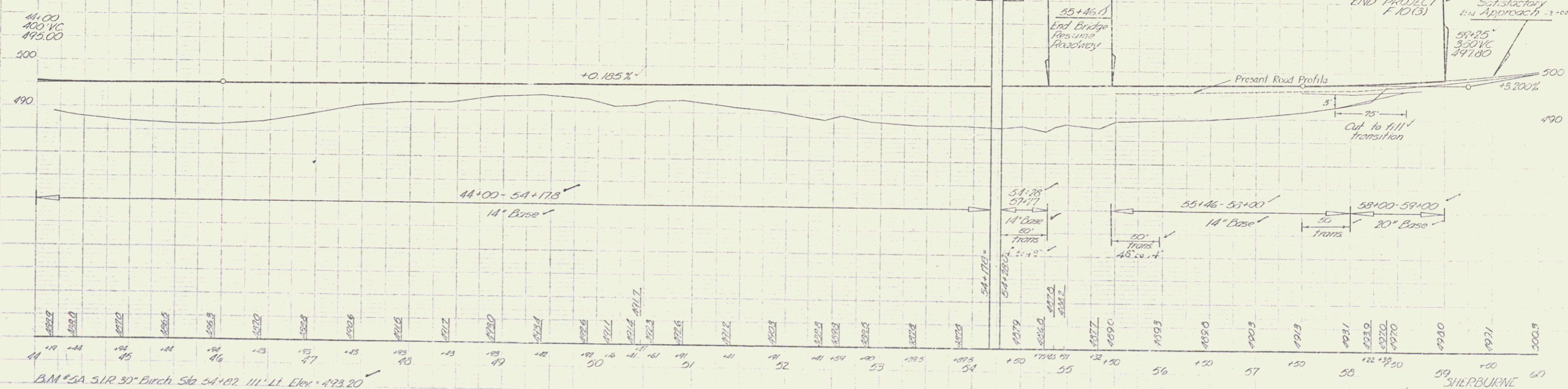
PARCEL	INSTRUMENT	DATE	GRANTOR	GRANTEE	RECORDED	BOOK	PAGE	DATE	REMARKS
2	Cond.	1-27-55	Trustees of the Diocese of Vermont Protestant Episcopal Church	St. of Vt. Sherburne	18	324-328	1-29-55	See also sheet 10	
3	Cond.	1-27-55	Alan J. Tinsley & Clara Murray	St. of Vt. Sherburne	18	324-328	1-29-55	See also sheet 12 & 13	



SHERBURNE
 F 10(3)
 Sheet 11 of 62

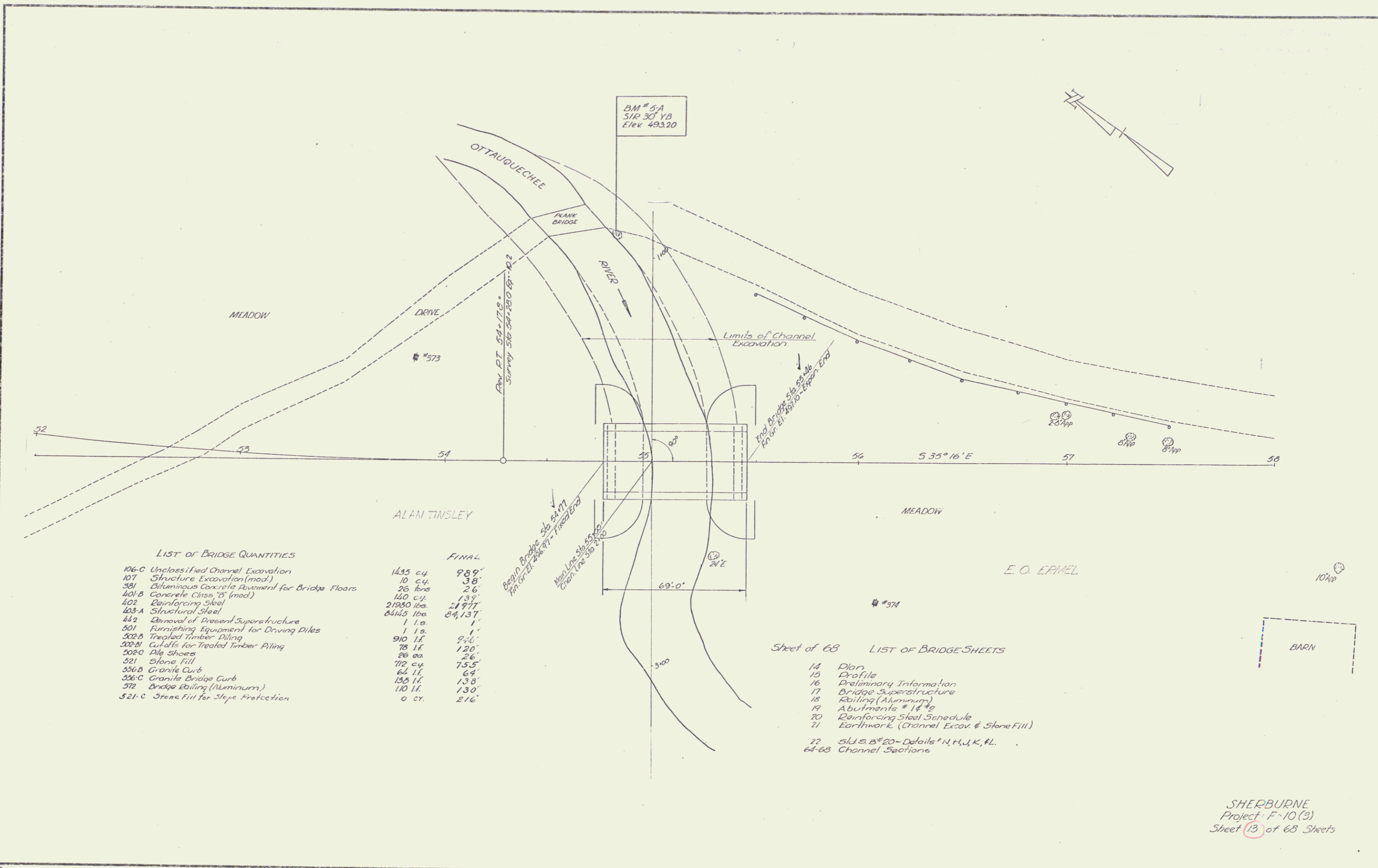


PARCEL	INSTRUMENT	DATE	GRANTOR	GRANTEE	RECORDED	BOOK	PAGE	DATE	REMARKS
4A,B	W.D.O.E.	5-24-55	Ernst Otto Ermel	St. of Vt.	Sherburne	20	200	5-11-55	See also sheet 15



41 42 43 44 45 46 47 48 49 50 51 52 53 54 55 56 57 58 59 60
 B.M. #5A S.R. 30° Birch Sta 54+07.111' Lt. Elev. 493.20
 SHERBURNE F 10 (3)
 Sheet 12 of C3

5



LIST OF BRIDGE QUANTITIES

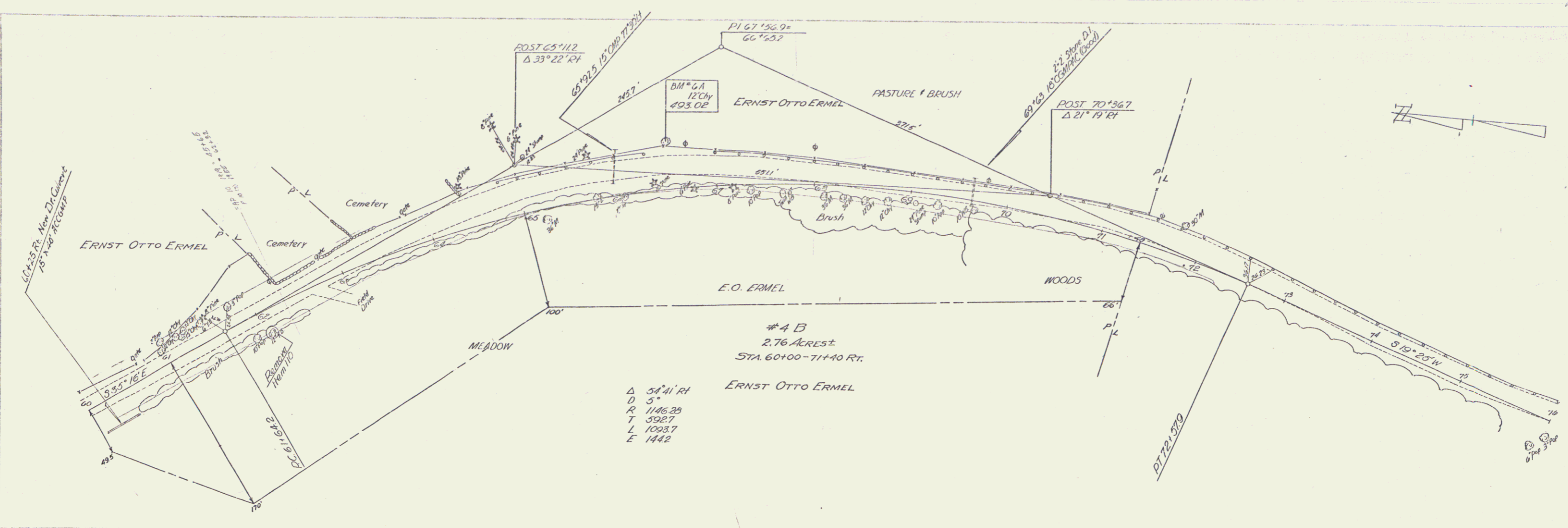
	FINAL	
106-C Unclassified Channel Excavation	1435 c.y.	989'
107 Structure Excavation (mod.)	10 c.y.	38'
301 Bituminous Concrete Pavement for Bridge Floors	26 tons	26'
401-B Concrete Class 'B' (mod)	140 c.y.	139'
402 Reinforcing Steel	21980 lbs.	21977'
403-A Structural Steel	8443 lbs.	84137'
442 Removal of Present Superstructure	1 l.s.	1'
501 Furnishing Equipment for Driving Piles	1 l.s.	1'
502-B Treated Timber Piling	910 lf.	916'
502-B Cullits for Treated Timber Piling	78 lf.	120'
502-C Dike Shoes	28 sq.	26'
521 Stone Fill	712 c.y.	755'
506-B Granite Curb	64 lf.	64'
506-C Granite Bridge Curb	135 lf.	138'
572 Bridge Railing (Aluminum)	110 lf.	130'
521-C Stone Fill for Slope Protection	0 c.y.	216'

Sheet of 68 LIST OF BRIDGE SHEETS

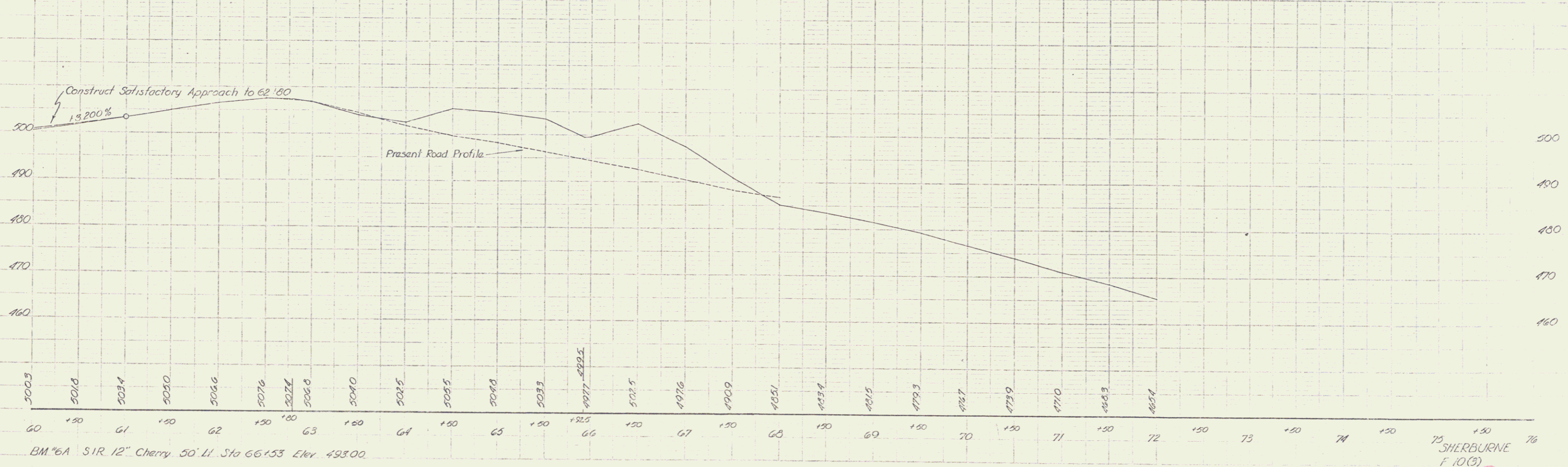
14	Plan
15	Profile
16	Preliminary Information
17	Bridge Superstructure
18	Railing (Aluminum)
19	Abutments # 1 & 2
20	Reinforcing Steel Schedule
21	Earthwork (Channel Excav. & Stone Fill)
22	S.L.S. 25' 20" Details # N, H, J, K, # L
64-68	Channel Sections

SHERBURNE
Project F-10 (3)
Sheet 13 of 68 Sheets

PLAN
DATE
BY
CHECKED
DATE
BY



PROFILE
DATE
BY
CHECKED
DATE
BY



BM *6A S 1/4 12" Cherry 50' LI Sta 66+53 Elev 493.00