

STEEL GUIDE POSTS
12+50 - 14+30 Lt.

CONSTRUCT DRIVES
14+20 RL
14+15 RL - 15+10 RL - 15+75 RL
25+00 RL - 25+50 Lt.

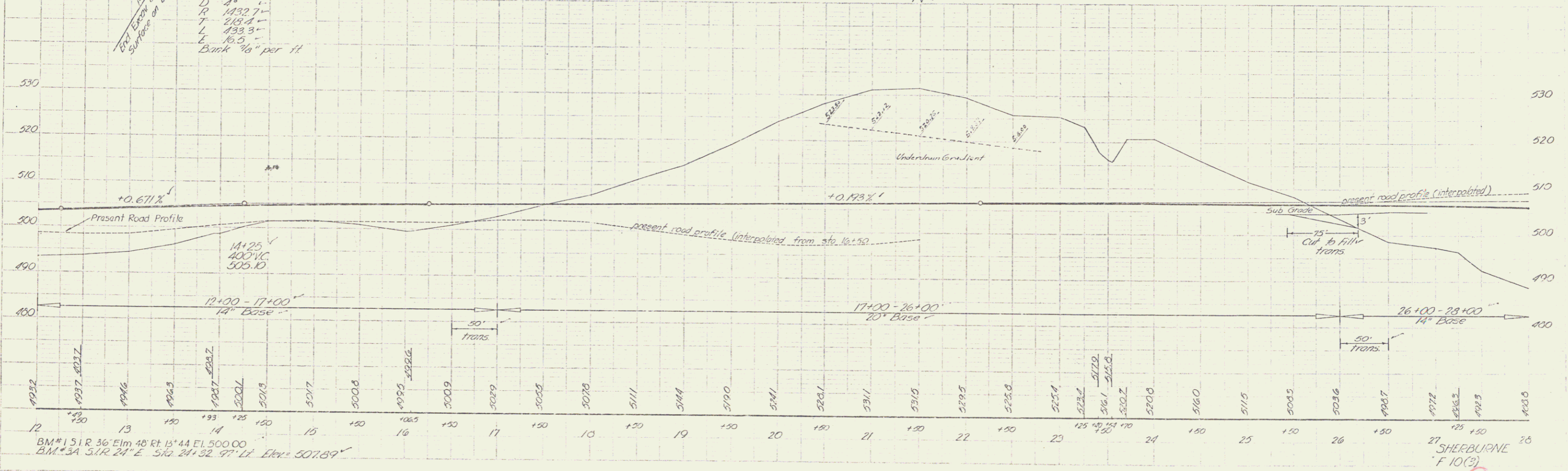
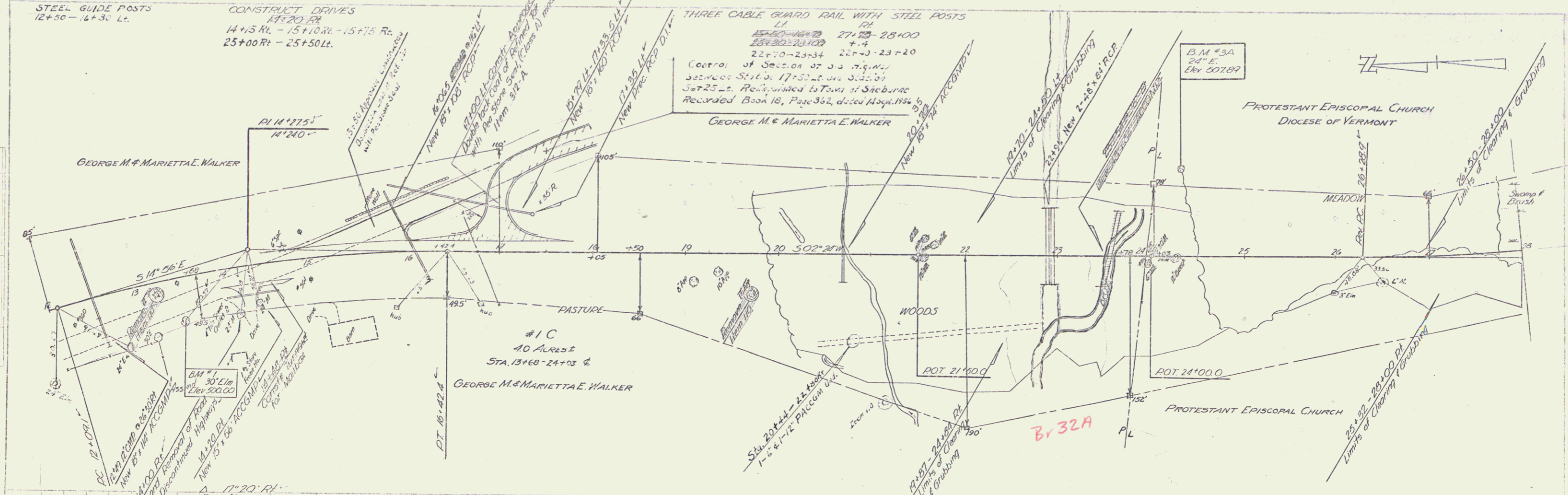
THREE CABLE GUARD RAIL WITH STEEL POSTS
14
15+50 - 16+50 27+00 - 28+00
18+30 - 23+00 +.7
22+70 - 23+34 22+00 - 23+20

Control of Section of ...
Set 25 ...
Recorded Book 18, Page 352, dated May 1894 by
GEORGE M. & MARIETTA E. WALKER

B.M. #3A
24" E.
Elev. 507.89

PROTESTANT EPISCOPAL CHURCH
DIOCESE OF VERMONT

Vertical Curve Data:
+0.671%
+0.193%
14+25
100' VC
500.10



BM #151 R 36' Elm 48' Rt 13' 44" El. 500.00
B.M. #3A S1R 24" E. 51.6 24' 32" 97' Lt. Elev. 507.89

SHERBURNE
F 10(3)
Sheet 10 of 60