

Removal & Disposal of Present
Guard Rail, Item 550
64+47 - 64+63 Lt. ✓
64+48 - 64+72 Lt. ✓

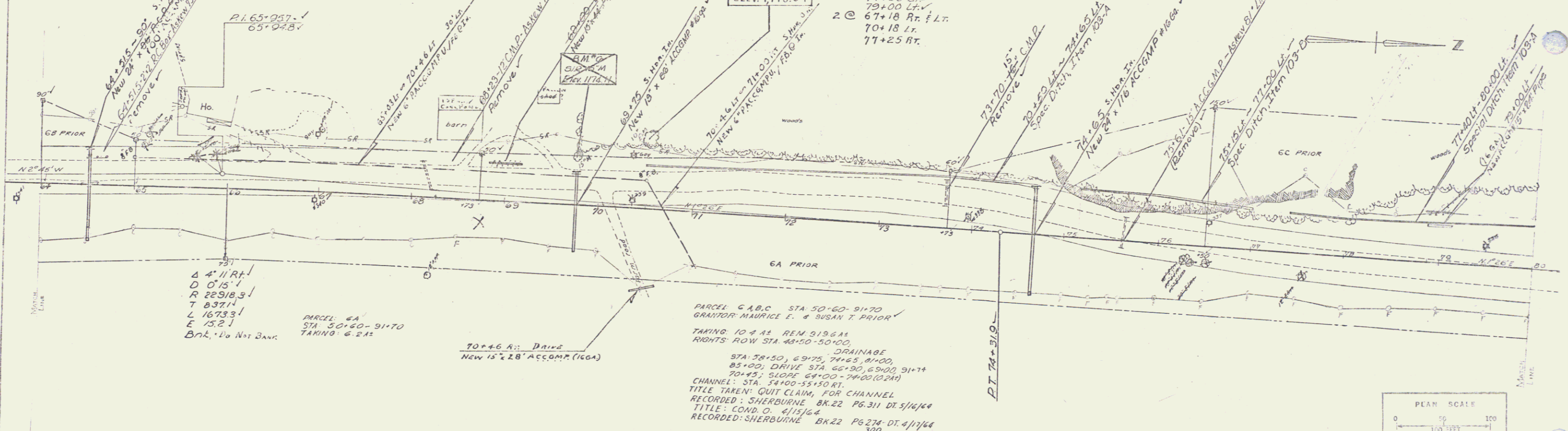
DRILLING & BLASTING - Item 114
64+50 - 69+00

B.M. No. 8-A
S.I.R. 10" Elm
70+50 Lt. 76'
Elev. 1,175.04

Construct Drives
68+90 Lt. ✓
69+60 Lt. ✓
70+45 Rt. ✓
77+00 Rt. ✓
79+00 Lt. ✓
67+18 Rt. f Lt.
70+18 Lt.
77+25 Rt.

Removal of Existing Road Surface, Item 101-A
Sta. 70+50 - Sta. 72+50 ✓
Sta. 77+00 - Sta. 80+00 ✓

PLAN
SHERBURNE
S.P. 50
7-99

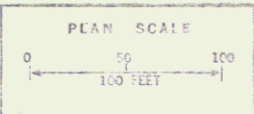


4" H.R.P.
D 0'15.1
R 22918.3
T 837.1
L 16733.1
E 15.2
Bnk. 1/2 to 2' Bw.

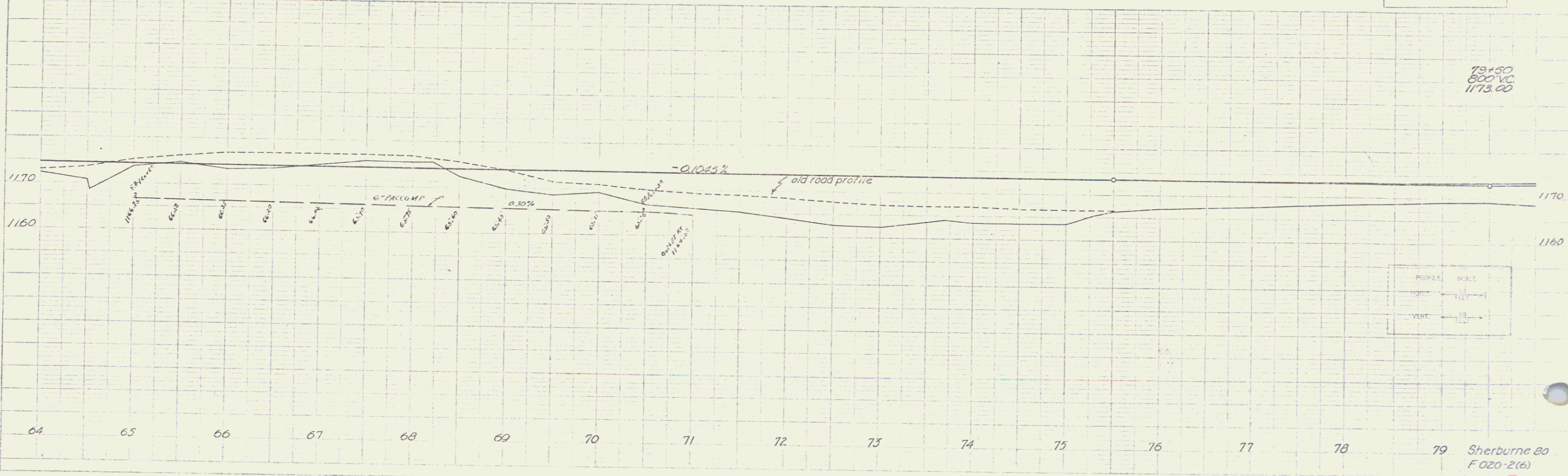
PARCEL 6A
STA 50+60 - 91+70
TAKING 6.215

70+46 A: Drain
New 15" x 28" ACCOMP (100A)

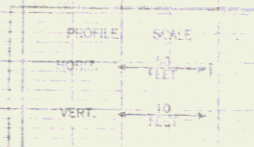
PARCEL C.A.B.C. STA 50+60 - 91+70
GRANTOR: MAURICE E. & SUSAN T. PRIOR
TAKING 10+44 REM 318.44
RIGHTS: ROW STA 48+50 - 50+00
DRAINAGE
STA 78+50, 69+75, 74+65, 81+00,
85+00; DRIVE STA 65+90, 69+00, 91+74
70+43; SLOPE 64+00 - 74+00 (2.24)
CHANNEL: STA 54+00 - 55+50 RT.
TITLE TAKEN: QUIT CLAIM, FOR CHANNEL
RECORDED: SHERBURNE BK-22 PG-311 DT. 3/16/64
TITLE: COND. O. 4/15/64
RECORDED: SHERBURNE BK-22 PG-274-DT. 4/11/64
300



Profile
SHERBURNE
S.P. 50
7-99



79+50
600' VC
1173.00



79 Sherburne 80
F 020-2(6)
Sheet 19 of 216

6