

INDEX OF SHEETS

SHEET NO. 1	TITLE PAGE
2	TYPICAL CROSS-SECTION OF IMPROVEMENT CRUSHED GRAVEL MIXED-IN-PLACE SURFACE COURSE WITH REFINED T&M, ITEM 341 (SCOOPED)
3	BANKING AND WIDENING TABLES
4	QUANTITY SHEET (ITEMS)
5	QUANTITY SHEET (DRAINAGE)
6-7	EARTHWORK SHEETS
8-10	PLAN AND PROFILE SHEETS
11	STANDARD STRUCTURE SHEET S-40 (BARRICADES, SIGNS AND LIGHTS-ROADWAY)
12	STANDARD STRUCTURE SHEET CONSTRUCTION DETAILS (DRAINAGE AND MARKERS)
13	STANDARD STRUCTURE SHEET CONSTRUCTION DETAILS CD-1 (DITCHES)
14	STANDARD STRUCTURE SHEET CONSTRUCTION DETAILS CD-2 (ROUNDING OF SLOPES)
15	STANDARD STRUCTURE SHEET S-45-45 (GUARD RAIL)
16	BRIDGE PLAN AND SECTION
17	DETAILS OF ABUTMENT NO.1
18	DETAILS OF ABUTMENT NO.2
19	DETAILS OF SUPERSTRUCTURE
20	REINFORCING STEEL DETAILS
21-24	CHANNEL SECTIONS
25	STANDARD STRUCTURE SHEET SB-20 (BRIDGE CONSTRUCTION DETAILS)
26	STANDARD STRUCTURE SHEET SB-5-S4 (RAILING DETAILS)
27	STANDARD STRUCTURE SHEET SB-11 (BARRICADES, SIGNS AND LIGHTS-BRIDGE)
28-33	CROSS SECTIONS

STANDARD STRUCTURE SHEET APPROVED BY THE CHIEF ENGINEER, VERMONT STATE DEPARTMENT OF HIGHWAYS.
S 40 JUNE 10, 1950

PROJECT NAME & NUMBER		TYPE	PAVEMENT AREA
SHERBURNE F 10(2) & F 76(5)		MIXED-IN-PLACE	3466 S.Y.
RECORD PLANS			
MATERIALS			
SUB-BASE OF GRAVEL GIFFORD PIT SHERBURNE	TAR	OLD COLONY TAR CO. WORCESTER, MASS.	
BIT. CONC. BLAKTOP, INC. W. LEBANON, N. H.	REINF. STEEL	TRUSCON STEEL CO. YOUNGSTOWN, OHIO	
CONC. AGG. TWIN STATE SAND & GR. INC. W. LEBANON, N.H.	CEMENT	GLENS FALLS PORT. CEM. CO. GLENS FALLS	
RCP VT CONC. PIPE CO. WINDSOR	GUARD RAIL	AM. STEEL & WIRE CO. NEW HAVEN, CONN.	
CONTRACTOR O.W. MILLER CO. INC. LUDLOW, MASS.	CONTRACT DATED	APR. 7 1952	
RES. ENGINEER M. M. OGDEN	CONTRACT STARTED	APR 7 1952	
INSPECTOR	CONTRACT COMPLETED	AUG 20 1953	
RECORD PLANS H. A. HEALD	CONTRACT ACCEPTED	AUG 20 1953	

STATE OF VERMONT
STATE HIGHWAY DEPARTMENT

PLAN AND PROFILE OF PROPOSED
STATE HIGHWAY

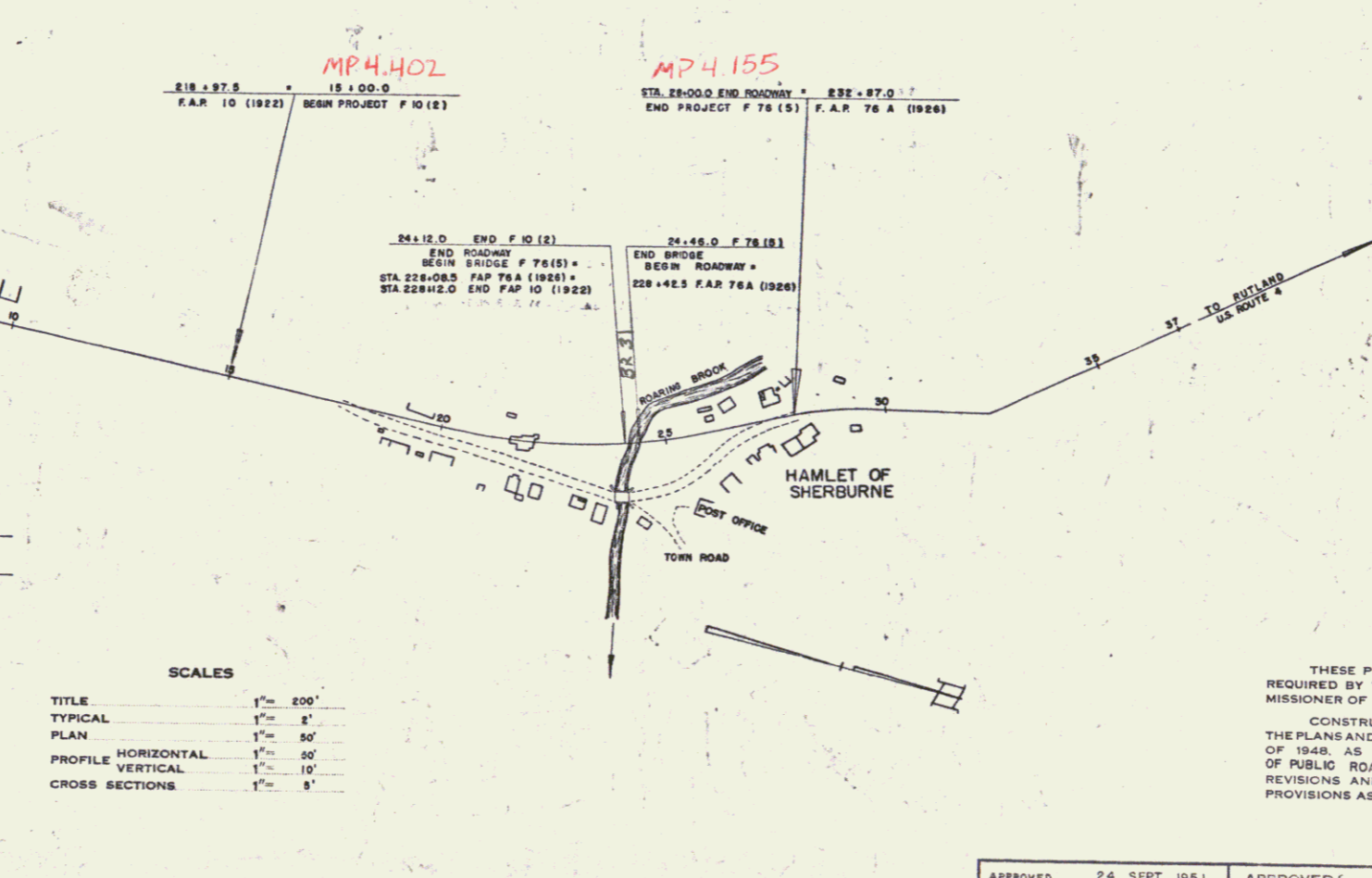
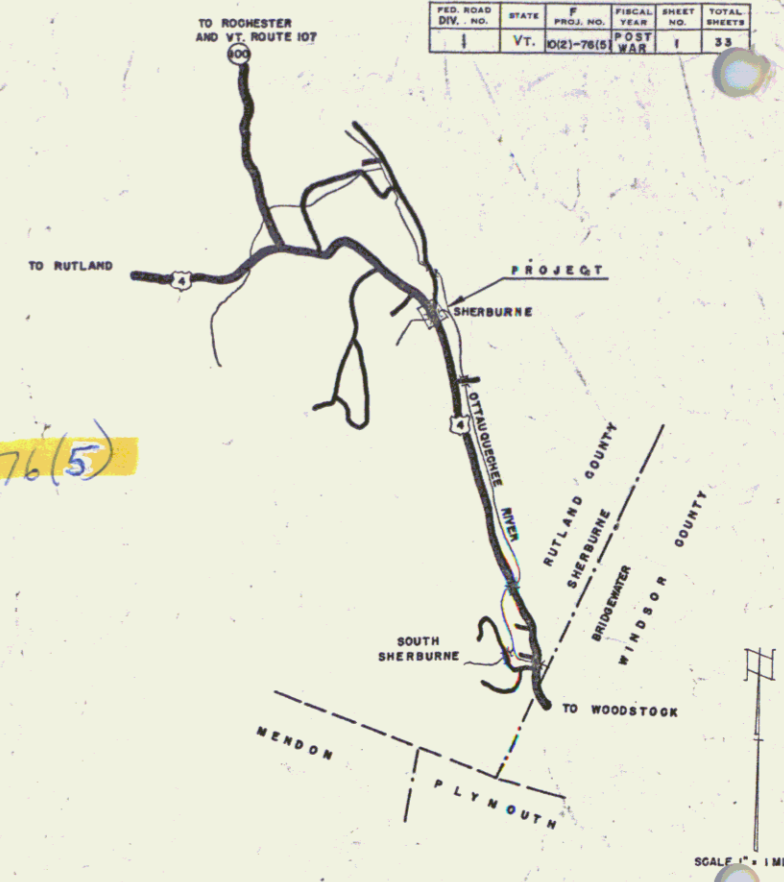
FEDERAL PROJECT

TOWN OF SHERBURNE
COUNTY OF RUTLAND
U.S. ROUTE 4
WOODSTOCK-RUTLAND ROAD

BEGINNING AT A POINT APPROXIMATELY 1,050 FEET SOUTHERLY OF THE U.S. POST OFFICE IN THE HAMLET OF SHERBURNE AND EXTENDING NORTHWESTERLY 1,300.0 FEET.

LENGTH OF ROADWAY F 10(2) 912.0 FEET = 0.173 MI.
LENGTH OF ROADWAY F 76(5) 354.0 FEET = 0.067 MI.
LENGTH OF BRIDGE F 76(5) 340 FEET = 0.006 MI.

TOTAL LENGTH 1,300.0 FEET = 0.246 MI.



APPROVED: NOV. 6 '51
H. E. Laing
CHIEF ENGINEER
SUBMITTED BY ORDER OF THE STATE HIGHWAY BOARD

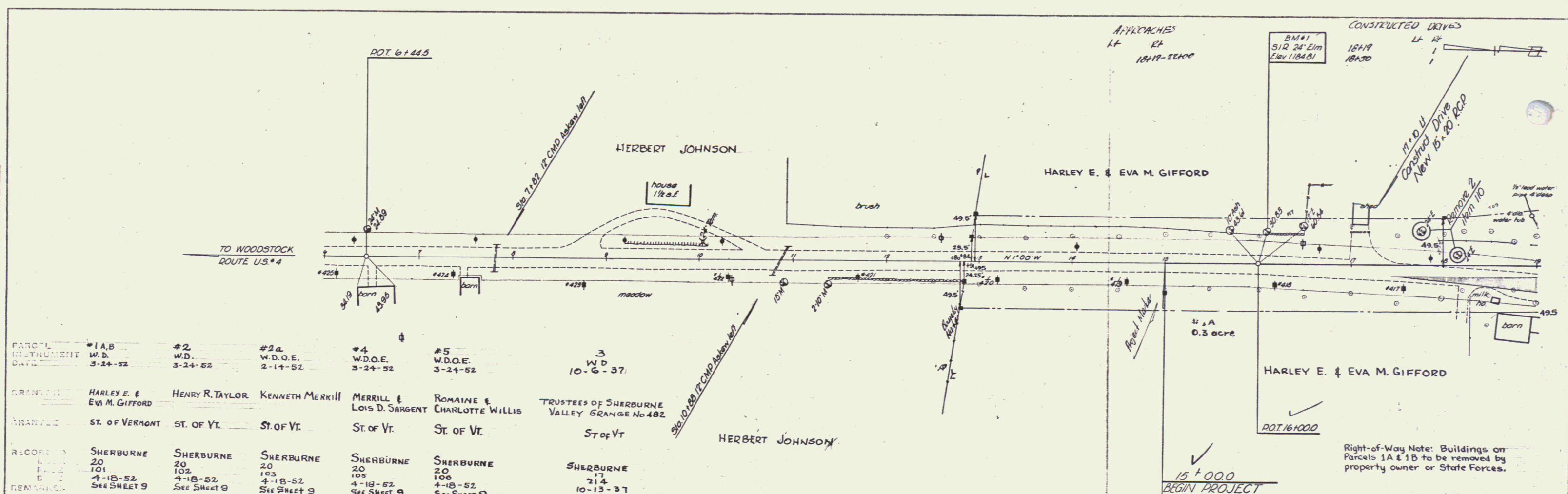
NOTES: ANY FURTHER INFORMATION CONCERNING FINAL QUANTITIES AND COSTS SHOULD BE OBTAINED RELATIVE TO A SURVEY OF THE PROJECT TO BE MADE EITHER THE FIELD BOOKS OR THE CONTRACT.

DEPARTMENT OF COMMERCE
BUREAU OF PUBLIC ROADS
RECOMMENDED FOR APPROVAL
DISTRICT ENGINEER DATE
APPROVED
DIVISION ENGINEER DATE

APPROVED: 24 SEPT 1951
H. A. Heald
BRIDGE ENGINEER
APPROVED: 21 SEPT 51
H. A. Heald
HIGHWAY ENGINEER
APPROVED: 15 Nov. 51
Carl R. Wilson
DISTRICT ENGINEER
PROJECT # NO. 100-76(5) FILED
SHEET 1 OF 33

PLAN
 DATE: 3-31-52
 DRAWN BY: ABBBY
 CHECKED BY: ABBBY
 SCALE: AS SHOWN

PROFILE
 DATE: 3-31-52
 DRAWN BY: ABBBY
 CHECKED BY: ABBBY
 SCALE: AS SHOWN



PARCEL	#1 A B	#2	#2 a	#4	#5	3
INSTRUMENT	W.D.	W.D.	W.D.O.E.	W.D.O.E.	W.D.O.E.	W.D.
DATE	3-24-52	3-24-52	2-14-52	3-24-52	3-24-52	10-6-37
GRANTEE	HARLEY E. & EVA M. GIFFORD	HENRY R. TAYLOR	KENNETH MERRILL	MERRILL & LOIS D. SARGENT	ROMAINE & CHARLOTTE WILLIS	TRUSTEES OF SHERBURNE VALLEY GRANGE No. 402
TOWNSHIP	ST. OF VERMONT	ST. OF VT.	ST. OF VT.	ST. OF VT.	ST. OF VT.	ST. OF VT.
RECORD	SHERBURNE 20 101	SHERBURNE 20 102	SHERBURNE 20 103	SHERBURNE 20 105	SHERBURNE 20 106	SHERBURNE 17 214
REMARKS	See SHEET 9	See SHEET 9	See SHEET 9	See SHEET 9	See SHEET 9	10-13-37 See SHEET 9.

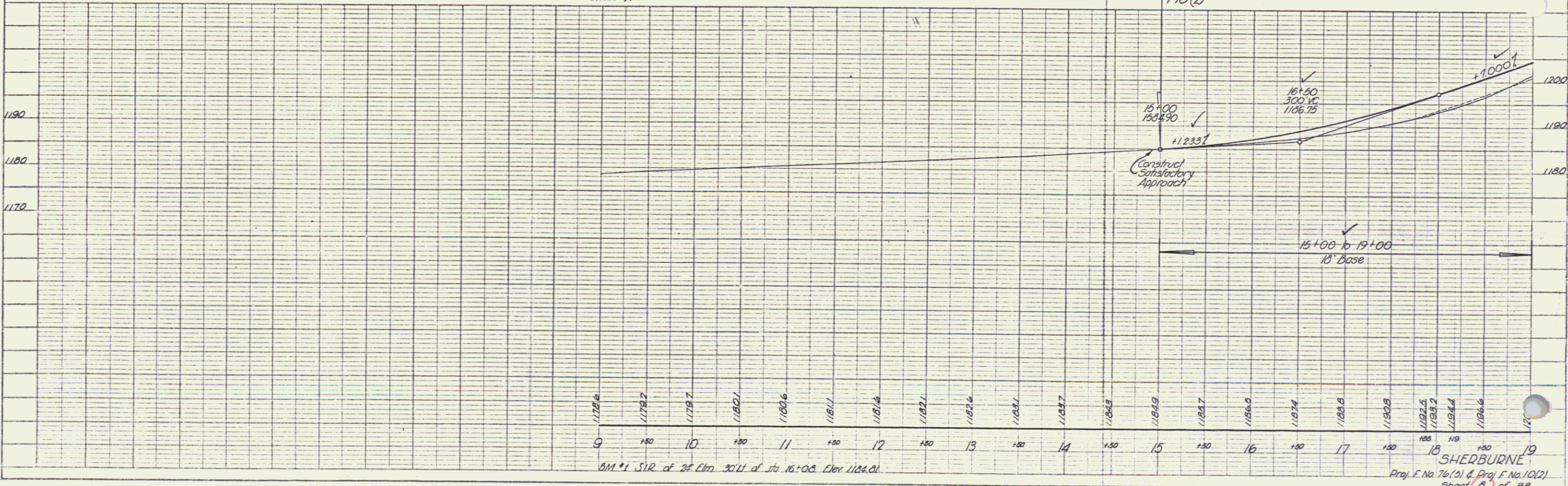
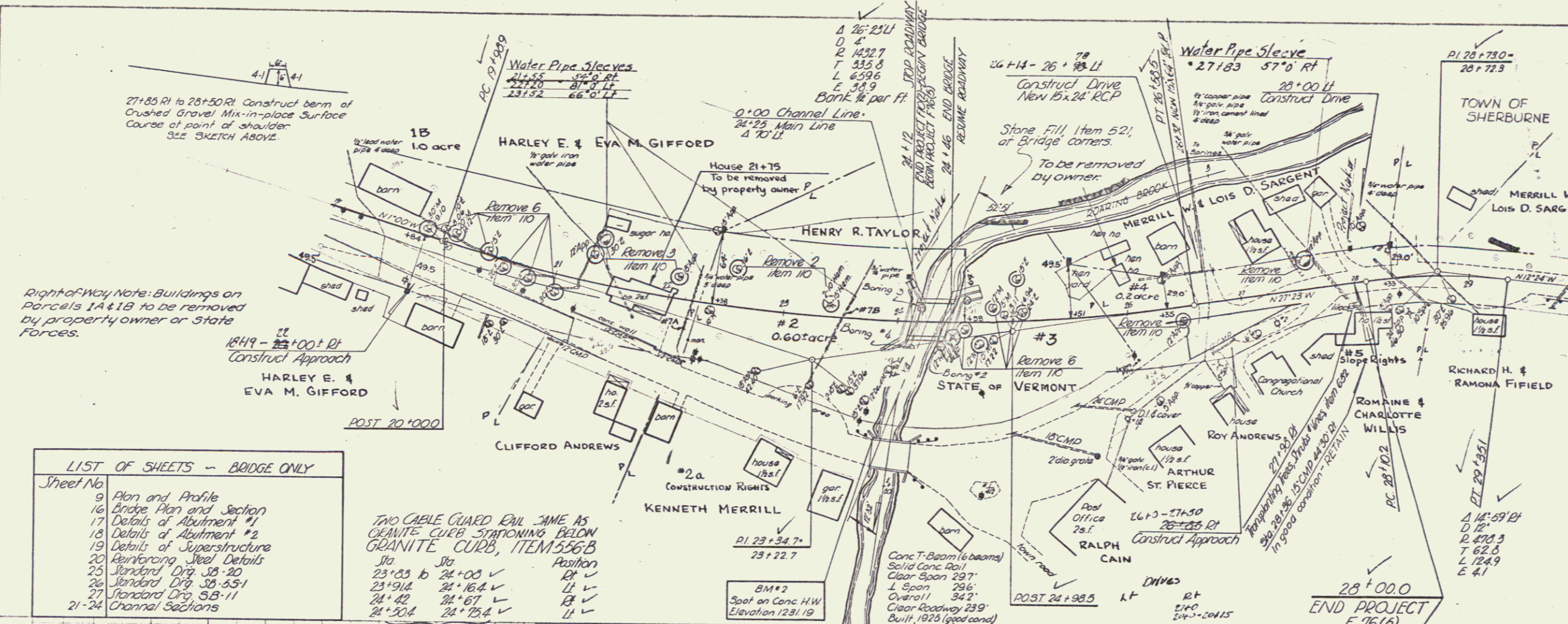


PLATE 1 - PLAN - PROFILE - 1/4" = 1' & 1/8" = 10'

SHERBURNE
 Proj. E. No. 76(5) & Proj. F. No. 10(2)
 Sheet 8 of 33

PLAN
 DATE: 9-23
 DRAWN BY: [Signature]
 CHECKED BY: [Signature]



Right-of-Way Note: Buildings on Parcels 1A & 1B to be removed by property owner or State Forces.

LIST OF SHEETS - BRIDGE ONLY

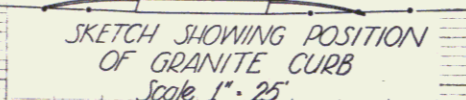
Sheet No.	Description
9	Plan and Profile
16	Bridge Plan and Section
17	Details of Abutment #1
18	Details of Abutment #2
19	Details of Superstructure
20	Reinforcing Steel Details
25	Standard Drg. 28-20
26	Standard Drg. 28-55-1
27	Standard Drg. 5B-11
21-24	Channel Sections

TWO CABLE GUARD RAIL JAME AS GRANITE CURB STATIONING BELOW GRANITE CURB, ITEM 556B

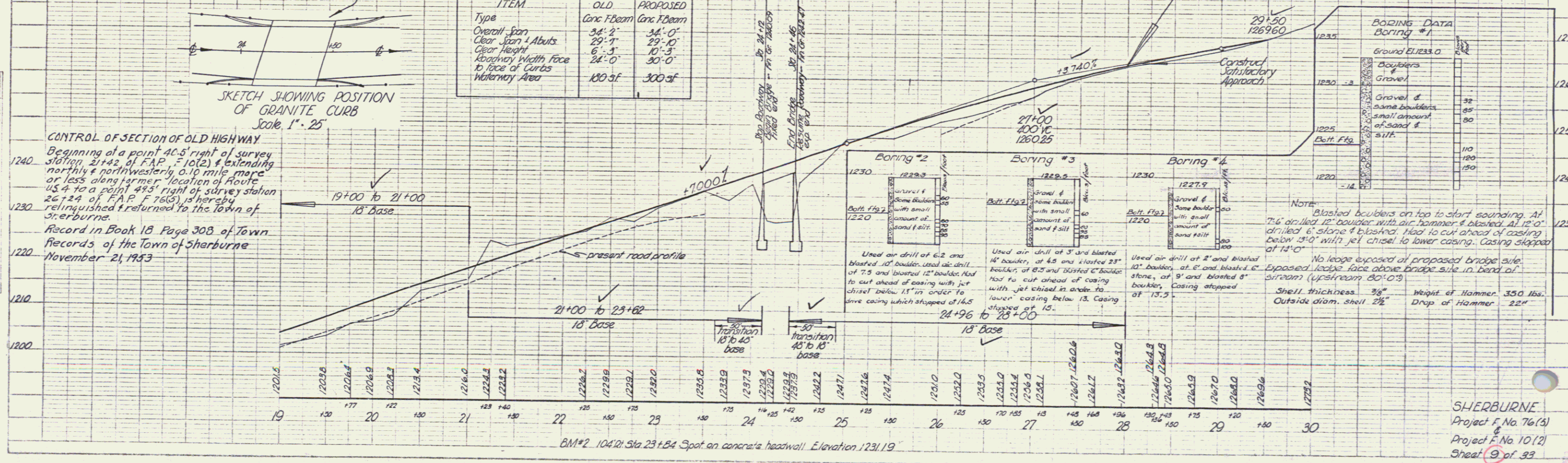
Sta.	Position
23+83 to 24+08	✓
23+94	✓
24+40	✓
24+50.4	✓
24+52.4	✓

BRIDGE DATA

ITEM	OLD	PROPOSED
Type	Conc. T-Beam	Conc. T-Beam
Overall span	34'-2"	34'-0"
Clear span & Abut.	29'-7"	29'-10"
Clear Height	6'-3"	10'-3"
Abutment Width Face to Face of Curbs	24'-0"	30'-0"
Waterway Area	180.3f	300.3f

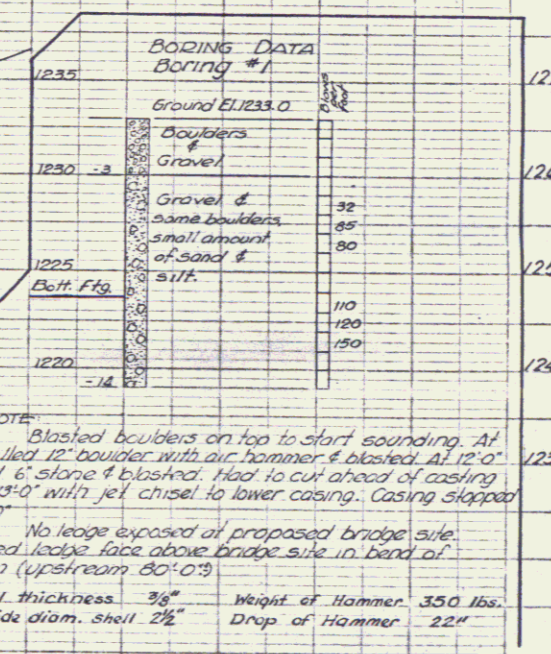


CONTROL OF SECTION OF OLD HIGHWAY
 Beginning at a point 46.5' right of survey station 21+42 of F.A.P. F 10(2) & extending north & northwesterly 0.10 mile more or less along former location of Route US 4 to a point 49.5' right of survey station 24+24 of F.A.P. F 75(5) & hereby relinquished & returned to the town of Sherburne.
 Record in Book 18, Page 308 of Town Records of the Town of Sherburne November 21, 1953



ESTIMATED BRIDGE QUANTITIES

ITEM NO.	ITEM	QUANTITY
106	Channel Excavation	75 cy
107	Structure Excavation (mod)	800 cy
109	Maintenance of Traffic for Bridge Projects	1 Ls
381	Continuous Concrete Pavement for Bridge Floors	13 ton
401 B	Concrete Class B (mod)	61 cy
401 C	Concrete Class C (mod)	424 cy
402	Reinforcing Steel	28,740 lbs
407	Asbestos Asphaltic Coating	77 cy
521	Stone Fill	72 cy
572	Bridge Railing	72 LF



NOTE: Blasted boulders on top to start sounding. At 7' drilled 12" boulder with air hammer & blasted. At 12' drilled 6" stone & blasted. Had to cut ahead of casing below 13' with jet chisel to lower casing. Casing stopped at 14'.

No ledge exposed at proposed bridge site. Exposed ledge face above bridge site in band of stream (upstream 80'-0').

Shell thickness 3/8" Weight of Hammer 350 lbs. Outside diam. shell 2 1/2" Drop of Hammer 22"

SHERBURNE
 Project F. No. 76(5)
 Project F. No. 10(2)
 Sheet 9 of 33