

WOODEN GUARD RAIL REQUIRED

ON LEFT

Sta. 243+26 to Sta. 243+50	Length	24'
" 243+70 " " 247+30	"	160'
" 251+40 " " 252+36	"	96'
" 256+03 " " 256+27	"	24'

ON RIGHT

Sta. 243+26 to Sta. 243+50	Length	24'
" 244+42 " " 248+10	"	368'
" 248+76 " " 252+36	"	360'
" 256+03 " " 256+27	"	24'

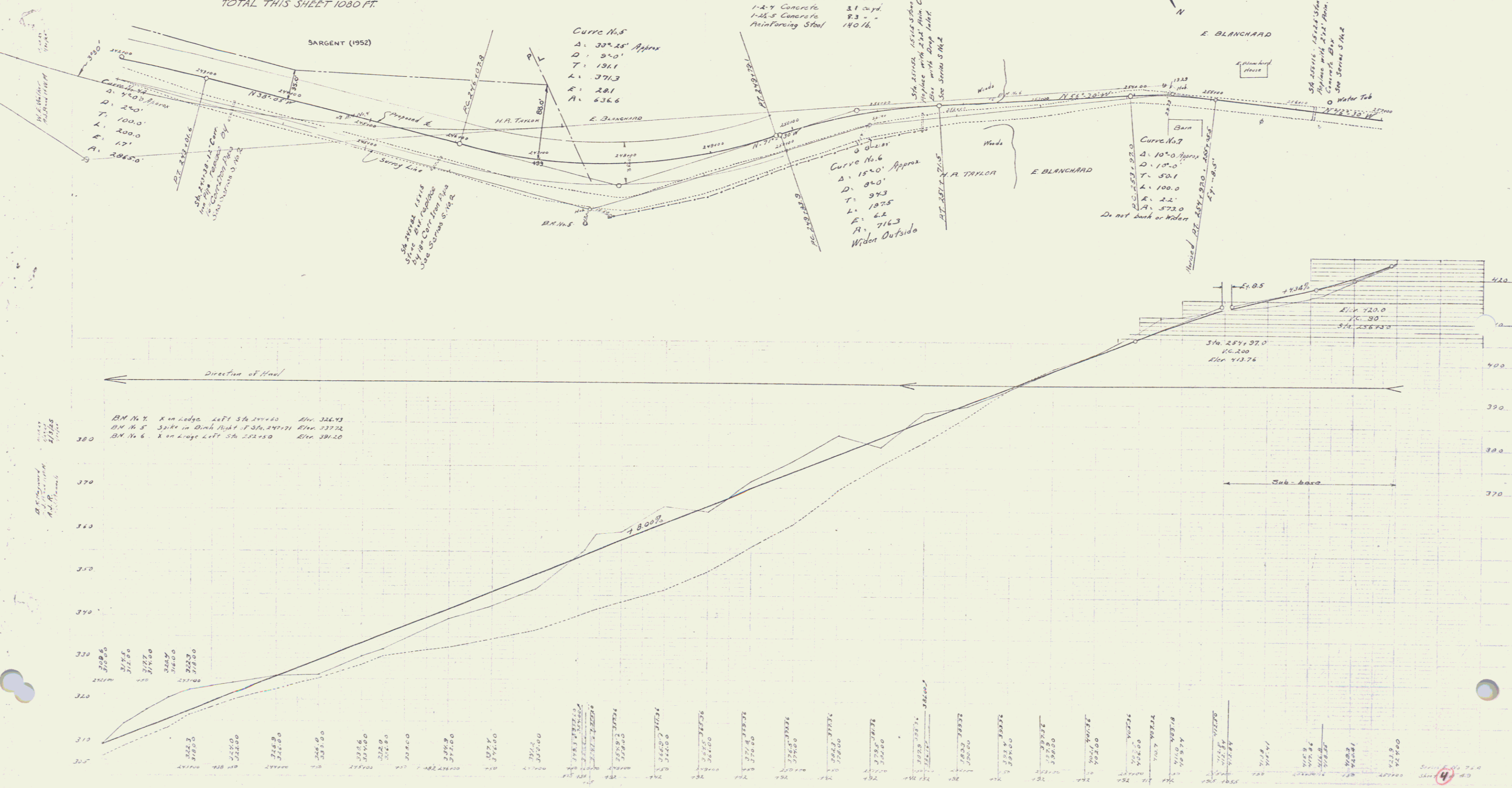
TOTAL THIS SHEET 1080 FT

SUB-BASE REQUIRED

Sta. 253+00 to Sta. 257+00 length 200 FT.

NEW CULVERTS REQUIRED

Sta. 243+38	16" Cor. Iron Pipe	Length 30'
" 245+82	1-2 1/2-5 Concrete	18 Cu Yds.
" 245+82	18" Cor. Iron Pipe	Length 44'
" 245+82	1-2 1/2-5 Concrete	25 Cu Yds.
Sta. 251+52	2 1/2' Reinforced Concrete Box	
" 251+52	1-2-4 Concrete	32 cu yd.
" 251+52	1-2-5 Concrete	6.41 "
" 251+52	Reinforcing Steel	140 lbs.
Sta. 256+15	2 1/2' Concrete Box Reinforced	
" 256+15	1-2-4 Concrete	31 cu yd.
" 256+15	1-2-5 Concrete	8.3 "
" 256+15	Reinforcing Steel	140 lb.



WOODEN GUARD RAIL REQUIRED

ON LEFT

Sta 260+04 to Sta 260+68	Length 64 FT
- 262+10 - 264+70	160 FT
- 265+73 - 266+85	112 "
- 269+60 - 271+20	160 "
- 282+88 - 283+00	12 "

ON RIGHT

Sta 260+04 to Sta 260+68	Length 64'
263+08 " 263+32	24'
272+08 " 273+00	92'

TOTAL THIS SHEET 608'

NEW CULVERTS REQUIRED

Sta. 260+16 4'x5' Reinforced Concrete Box
1-2'x Concrete 170 yd
1-2'x Concrete 180 "

Sta. 263+20 18" Cor. Iron Pipe Length 28'
1-2'x Concrete 1.8 cu yd

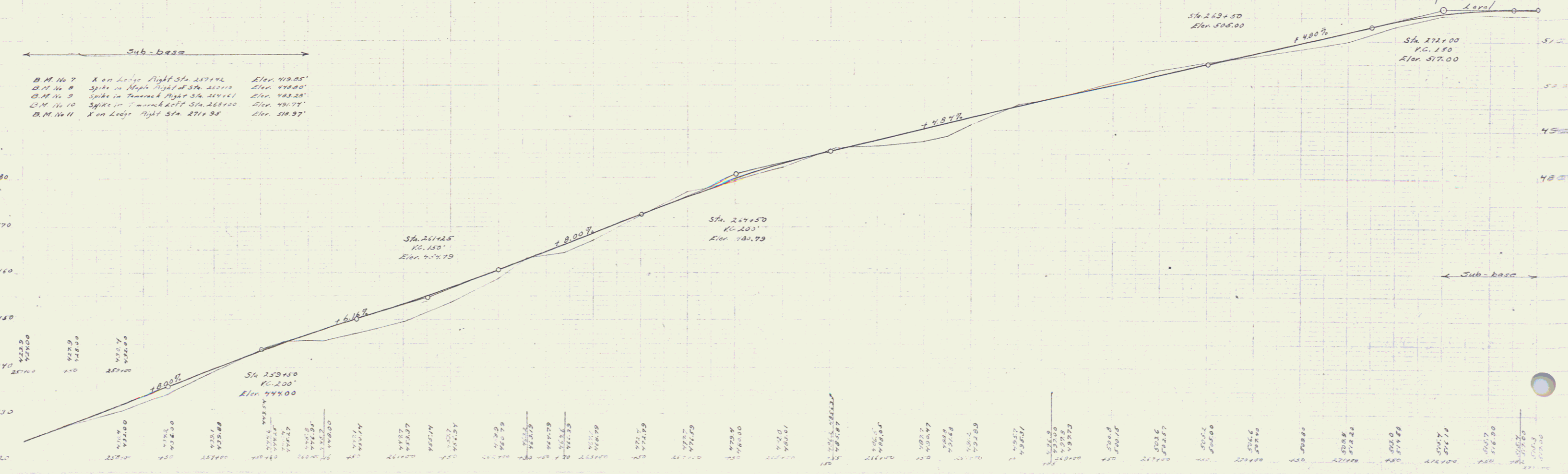
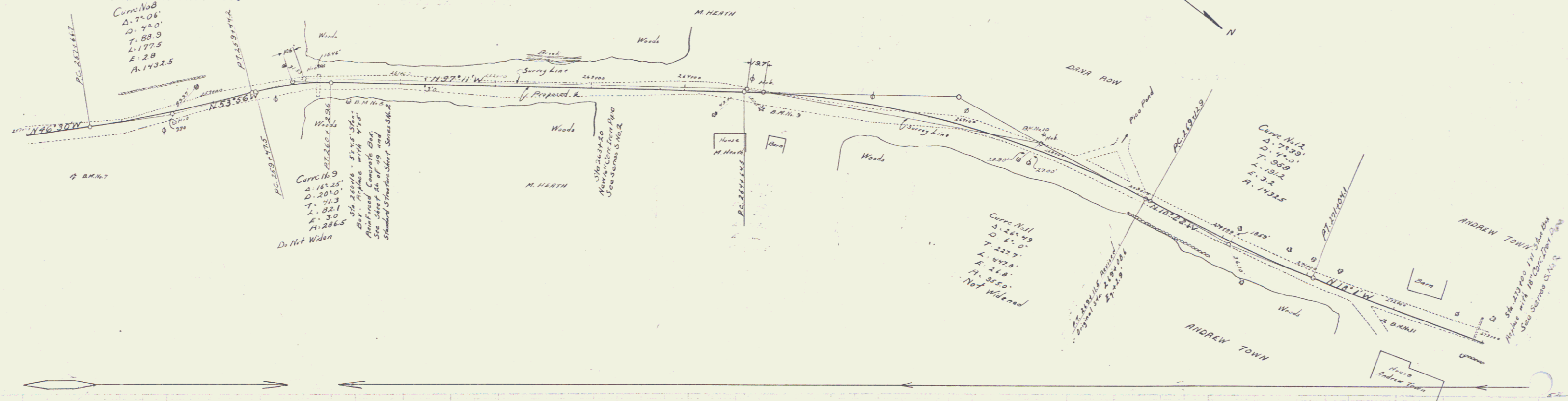
Sta. 273+00 18" Cor. Iron Pipe Length 30'
1-2'x Concrete 2.5 Cu. Yds.

SUB-BASE REQUIRED

Sta. 257+00 to Sta. 260+00 Length 300 FT

Sta. 272+00 to Sta. 273+00 " 100 FT

PLAN	SECTION	SCALE	SHEET	DATE
1" = 100'	1" = 10'	1" = 10'	14	NOV 1927



B.M. No. 7	X on Left Right Sta. 257+00	Elev. 419.85'
B.M. No. 8	Spikes in Right Right Sta. 260+00	Elev. 438.80'
B.M. No. 9	Spikes in Right Right Sta. 260+00	Elev. 443.28'
B.M. No. 10	Spikes in Right Right Sta. 260+00	Elev. 441.74'
B.M. No. 11	X on Left Right Sta. 271+95	Elev. 518.37'

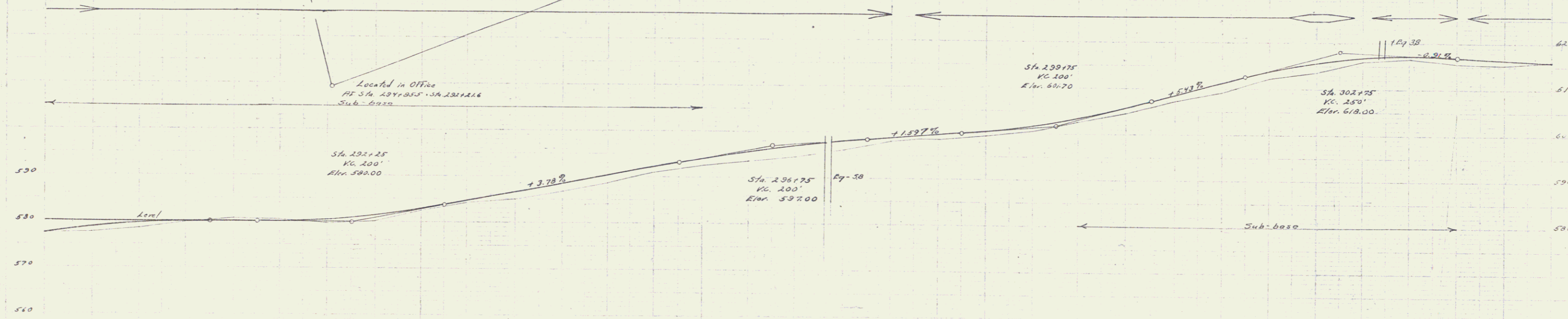
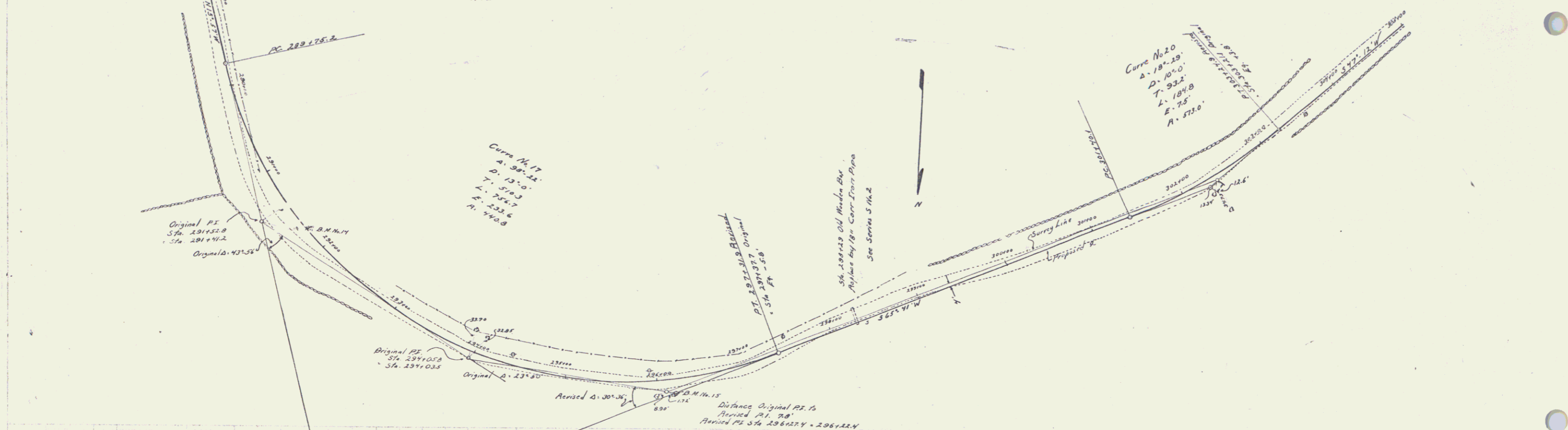
Sheet 14 of 14

WOODEN GUARD RAIL REQUIRED
 ON LEFT
 Sta. 298+17 To Sta. 298+41 Length 24 FT.
 ON RIGHT
 Sta. 292+72 To Sta. 301+90 Length 1148 FT.
 TOTAL THIS SHEET 1192 FT.

NEW CULVERTS REQUIRED
 Sta. 298+29 18" Corc. Iron Pipe Length 34' Sta. 293+00 To Sta. 296+100 Length 700 FT.
 1-2 1/2" S Concrete 18 Cu. Yds. Sta. 300+00 To Sta. 301+00 Length 700 FT.

SUB-BASE REQUIRED

Scale: 1" = 40' (Horizontal), 1" = 10' (Vertical)
 Date: 7/49



Station	Elevation	Notes
297+00	580.00	B.M. 14
297+10	580.00	
297+20	580.00	
297+30	580.00	
297+40	580.00	
297+50	580.00	
297+60	580.00	
297+70	580.00	
297+80	580.00	
297+90	580.00	
298+00	580.00	
298+10	580.00	
298+20	580.00	
298+30	580.00	
298+40	580.00	
298+50	580.00	
298+60	580.00	
298+70	580.00	
298+80	580.00	
298+90	580.00	
299+00	580.00	
299+10	580.00	
299+20	580.00	
299+30	580.00	
299+40	580.00	
299+50	580.00	
299+60	580.00	
299+70	580.00	
299+80	580.00	
299+90	580.00	
300+00	580.00	
300+10	580.00	
300+20	580.00	
300+30	580.00	
300+40	580.00	
300+50	580.00	
300+60	580.00	
300+70	580.00	
300+80	580.00	
300+90	580.00	
301+00	580.00	
301+10	580.00	
301+20	580.00	
301+30	580.00	
301+40	580.00	
301+50	580.00	
301+60	580.00	
301+70	580.00	
301+80	580.00	
301+90	580.00	
302+00	580.00	

Series E. N. 364
 Sheet 17 of 49

WOODEN GUARD RAIL REQUIRED
ON LEFT

Sta 309.11	1.5 ft	335.45	Length 27 ft
Sta 314.12		316.92	80 ft
Sta 317.63		317.97	24 ft
Sta 320.73		320.97	

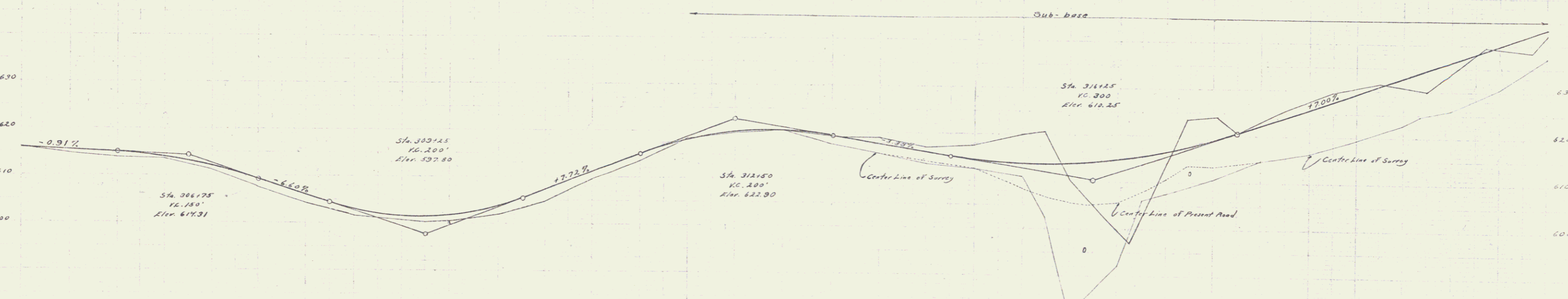
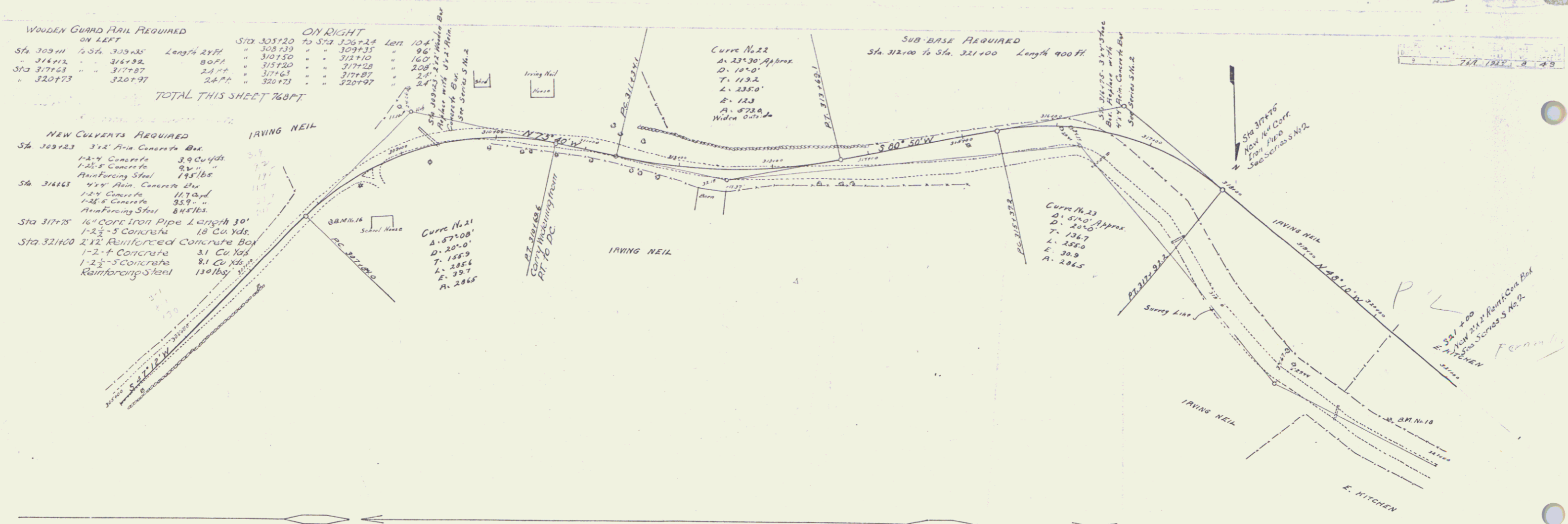
ON RIGHT

Sta 305.120	to Sta 320.734	Left 10 ft
Sta 308.139		9 ft
Sta 312.150		16 ft
Sta 315.260		20 ft
Sta 317.63		24 ft
Sta 320.73		24 ft

NEW CULVERTS REQUIRED

Sta 309.123	3x2' Rein Concrete Box	1-2" Concrete	3.9 Cu Yds
		1-2 1/2" Concrete	9.2 "
		Reinforcing Steel	178 lbs
Sta 314.163	4x4' Rein Concrete Box	1-2" Concrete	11.7 Cu Yds
		1-2 1/2" Concrete	35.9 "
		Reinforcing Steel	847 lbs
Sta 317.75	16" Core Iron Pipe Length 30'		
		1-2 1/2" Concrete	18 Cu Yds
Sta 321.100	2'x2' Reinforced Concrete Box	1-2" Concrete	3.1 Cu Yds
		1-2 1/2" Concrete	9.1 Cu Yds
		Reinforcing Steel	150 lbs

SUB-BASE REQUIRED
Sta 312.100 to Sta. 321.100 Length 900 ft



B.M. 16 Spike in Elm Right of Way Sta. 307.95 Elev. 603.19'
B.M. 17 Spike on edge Right of Way Sta. 312.30 Elev. 620.17'
B.M. 18 Spike in Right of Way Sta. 320.150 Elev. 630.16'

309.11	309.20	309.30	309.40	309.50	309.60	309.70	309.80	309.90	310.00	310.10	310.20	310.30	310.40	310.50	310.60	310.70	310.80	310.90	311.00	311.10	311.20	311.30	311.40	311.50	311.60	311.70	311.80	311.90	312.00	312.10	312.20	312.30	312.40	312.50	312.60	312.70	312.80	312.90	313.00	313.10	313.20	313.30	313.40	313.50	313.60	313.70	313.80	313.90	314.00	314.10	314.20	314.30	314.40	314.50	314.60	314.70	314.80	314.90	315.00	315.10	315.20	315.30	315.40	315.50	315.60	315.70	315.80	315.90	316.00	316.10	316.20	316.30	316.40	316.50	316.60	316.70	316.80	316.90	317.00	317.10	317.20	317.30	317.40	317.50	317.60	317.70	317.80	317.90	318.00	318.10	318.20	318.30	318.40	318.50	318.60	318.70	318.80	318.90	319.00	319.10	319.20	319.30	319.40	319.50	319.60	319.70	319.80	319.90	320.00	320.10	320.20	320.30	320.40	320.50	320.60	320.70	320.80	320.90	321.00	321.10
--------	--------	--------	--------	--------	--------	--------	--------	--------	--------	--------	--------	--------	--------	--------	--------	--------	--------	--------	--------	--------	--------	--------	--------	--------	--------	--------	--------	--------	--------	--------	--------	--------	--------	--------	--------	--------	--------	--------	--------	--------	--------	--------	--------	--------	--------	--------	--------	--------	--------	--------	--------	--------	--------	--------	--------	--------	--------	--------	--------	--------	--------	--------	--------	--------	--------	--------	--------	--------	--------	--------	--------	--------	--------	--------	--------	--------	--------	--------	--------	--------	--------	--------	--------	--------	--------	--------	--------	--------	--------	--------	--------	--------	--------	--------	--------	--------	--------	--------	--------	--------	--------	--------	--------	--------	--------	--------	--------	--------	--------	--------	--------	--------	--------	--------	--------	--------	--------	--------	--------	--------

WOODEN GUARD RAIL REQUIRED

ON LEFT

Sta. 323+29	To Sta. 323+53	Length 24 FT
- 327+40	327+64	24"
- 331+74	331+98	24"
- 334+22	334+46	24"

ON RIGHT

Sta. 323+29	To Sta. 326+17	Length 288 FT
- 327+40	329+20	192"
- 331+74	334+98	24"
- 334+22	334+46	24"

TOTAL THIS SHEET 624 FT

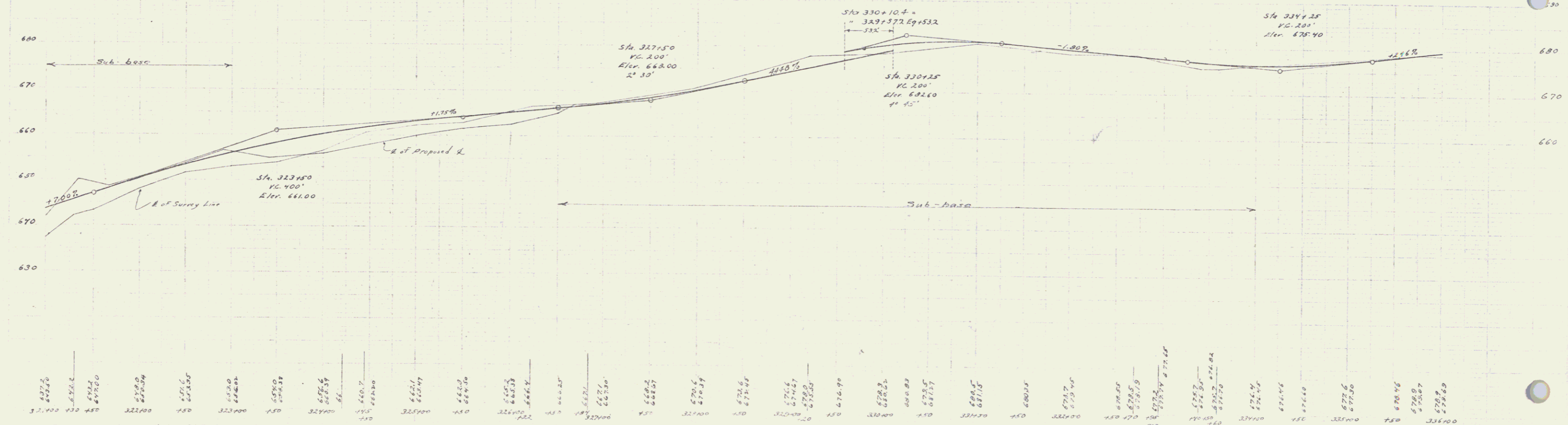
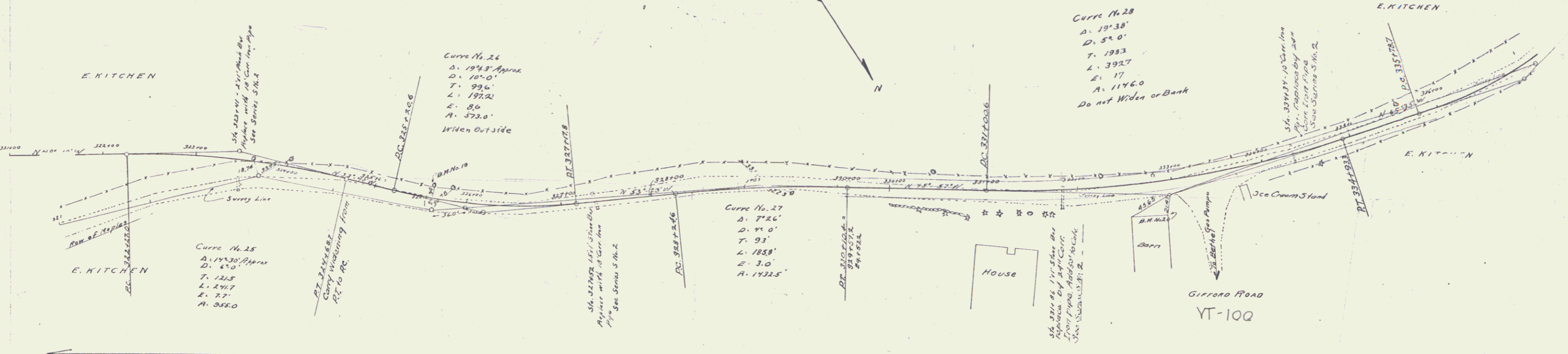
NEW CURBS REQUIRED

Sta. 323+41	18" Cor. Iron Pipe Length 36 FT
	1-2 1/2" Concrete 2.8 Cu. Yds.
Sta. 327+52	18" Cor. Iron Pipe Length 38 FT
	1-2 1/2" Concrete 2.5 Cu. Yds.
Sta. 331+06	24" Cor. Iron Pipe Length 80 FT
	With Drop Inlet
	1-2 1/2" Concrete 4.7 Cu. Yds.
Sta. 334+34	24" Cor. Iron Pipe Length 28 FT
	1-2 1/2" Concrete 3.2 Cu. Yds.

SUB-BASE REQUIRED

Sta. 326+50	To Sta. 329+10	Length 260 FT
		2032 Ft. Eq. 522 Ft.

Scale: 1" = 40' (Horizontal), 1" = 10' (Vertical)



607.2	608.0	608.8	609.6	610.4	611.2	612.0	612.8	613.6	614.4	615.2	616.0	616.8	617.6	618.4	619.2	620.0	620.8	621.6	622.4	623.2	624.0	624.8	625.6	626.4	627.2	628.0	628.8	629.6	630.4	631.2	632.0	632.8	633.6	634.4	635.2	636.0	636.8	637.6	638.4	639.2	640.0	640.8	641.6	642.4	643.2	644.0	644.8	645.6	646.4	647.2	648.0	648.8	649.6	650.4	651.2	652.0	652.8	653.6	654.4	655.2	656.0	656.8	657.6	658.4	659.2	660.0	660.8	661.6	662.4	663.2	664.0	664.8	665.6	666.4	667.2	668.0	668.8	669.6	670.4	671.2	672.0	672.8	673.6	674.4	675.2	676.0	676.8	677.6	678.4	679.2	680.0	680.8	681.6	682.4	683.2	684.0	684.8	685.6	686.4	687.2	688.0	688.8	689.6	690.4	691.2	692.0	692.8	693.6	694.4	695.2	696.0	696.8	697.6	698.4	699.2	700.0
-------	-------	-------	-------	-------	-------	-------	-------	-------	-------	-------	-------	-------	-------	-------	-------	-------	-------	-------	-------	-------	-------	-------	-------	-------	-------	-------	-------	-------	-------	-------	-------	-------	-------	-------	-------	-------	-------	-------	-------	-------	-------	-------	-------	-------	-------	-------	-------	-------	-------	-------	-------	-------	-------	-------	-------	-------	-------	-------	-------	-------	-------	-------	-------	-------	-------	-------	-------	-------	-------	-------	-------	-------	-------	-------	-------	-------	-------	-------	-------	-------	-------	-------	-------	-------	-------	-------	-------	-------	-------	-------	-------	-------	-------	-------	-------	-------	-------	-------	-------	-------	-------	-------	-------	-------	-------	-------	-------	-------	-------	-------	-------	-------	-------	-------	-------	-------

B.M. 119 Spike in S. High. 117' F. Sta. 325+05 Elev. 666.06'

B.M. 120 S.W. Corner Kitchen's Barn Opposite Sta. 322+00 Elev. 668.90'

Series F. 11. 71A
Sheet 9-49

WOODEN GUARD RAIL REQUIRED

ON LEFT

Sta. 338+80 to Sta. 339+12	Length 24 FT.
340+20	24 "
341+20	24 "
342+20	24 "
343+20	24 "
344+20	24 "
345+20	24 "
346+20	24 "
347+20	24 "
348+20	24 "
349+20	24 "
350+20	24 "
351+20	24 "
352+20	24 "
353+20	24 "
354+20	24 "
355+20	24 "
356+20	24 "
357+20	24 "
358+20	24 "
359+20	24 "
360+20	24 "
361+20	24 "
362+20	24 "
363+20	24 "
364+20	24 "
365+20	24 "
366+20	24 "
367+20	24 "
368+20	24 "
369+20	24 "
370+20	24 "
371+20	24 "
372+20	24 "
373+20	24 "
374+20	24 "
375+20	24 "
376+20	24 "
377+20	24 "
378+20	24 "
379+20	24 "
380+20	24 "
381+20	24 "
382+20	24 "
383+20	24 "
384+20	24 "
385+20	24 "
386+20	24 "
387+20	24 "
388+20	24 "
389+20	24 "
390+20	24 "
391+20	24 "
392+20	24 "
393+20	24 "
394+20	24 "
395+20	24 "
396+20	24 "
397+20	24 "
398+20	24 "
399+20	24 "
400+20	24 "
401+20	24 "
402+20	24 "
403+20	24 "
404+20	24 "
405+20	24 "
406+20	24 "
407+20	24 "
408+20	24 "
409+20	24 "
410+20	24 "
411+20	24 "
412+20	24 "
413+20	24 "
414+20	24 "
415+20	24 "
416+20	24 "
417+20	24 "
418+20	24 "
419+20	24 "
420+20	24 "
421+20	24 "
422+20	24 "
423+20	24 "
424+20	24 "
425+20	24 "
426+20	24 "
427+20	24 "
428+20	24 "
429+20	24 "
430+20	24 "
431+20	24 "
432+20	24 "
433+20	24 "
434+20	24 "
435+20	24 "
436+20	24 "
437+20	24 "
438+20	24 "
439+20	24 "
440+20	24 "
441+20	24 "
442+20	24 "
443+20	24 "
444+20	24 "
445+20	24 "
446+20	24 "
447+20	24 "
448+20	24 "
449+20	24 "
450+20	24 "
451+20	24 "
452+20	24 "
453+20	24 "
454+20	24 "
455+20	24 "
456+20	24 "
457+20	24 "
458+20	24 "
459+20	24 "
460+20	24 "
461+20	24 "
462+20	24 "
463+20	24 "
464+20	24 "
465+20	24 "
466+20	24 "
467+20	24 "
468+20	24 "
469+20	24 "
470+20	24 "
471+20	24 "
472+20	24 "
473+20	24 "
474+20	24 "
475+20	24 "
476+20	24 "
477+20	24 "
478+20	24 "
479+20	24 "
480+20	24 "
481+20	24 "
482+20	24 "
483+20	24 "
484+20	24 "
485+20	24 "
486+20	24 "
487+20	24 "
488+20	24 "
489+20	24 "
490+20	24 "
491+20	24 "
492+20	24 "
493+20	24 "
494+20	24 "
495+20	24 "
496+20	24 "
497+20	24 "
498+20	24 "
499+20	24 "
500+20	24 "

TOTAL THIS SHEET 640 FT.

NEW CULVERTS REQUIRED

Sta. 339+00	16" Cor. Iron Pipe Length 30'
Sta. 340+30	1-2'-5" Concrete Length 18 Cu Yds.
Sta. 341+30	16" Cor. Iron Pipe Length 36'
Sta. 342+10	16" Cor. Iron Pipe Length 34'
Sta. 344+42	1-2'-5" Concrete Length 18 Cu Yds.
Sta. 347+15	18" Cor. Iron Pipe Length 30 FT
Sta. 347+15	1-2'-5" Concrete Length 25 cu yd.
Sta. 347+15	18" Cor. Iron Pipe Length 30 FT
Sta. 347+15	1-2'-5" Concrete Length 25 cu yd.

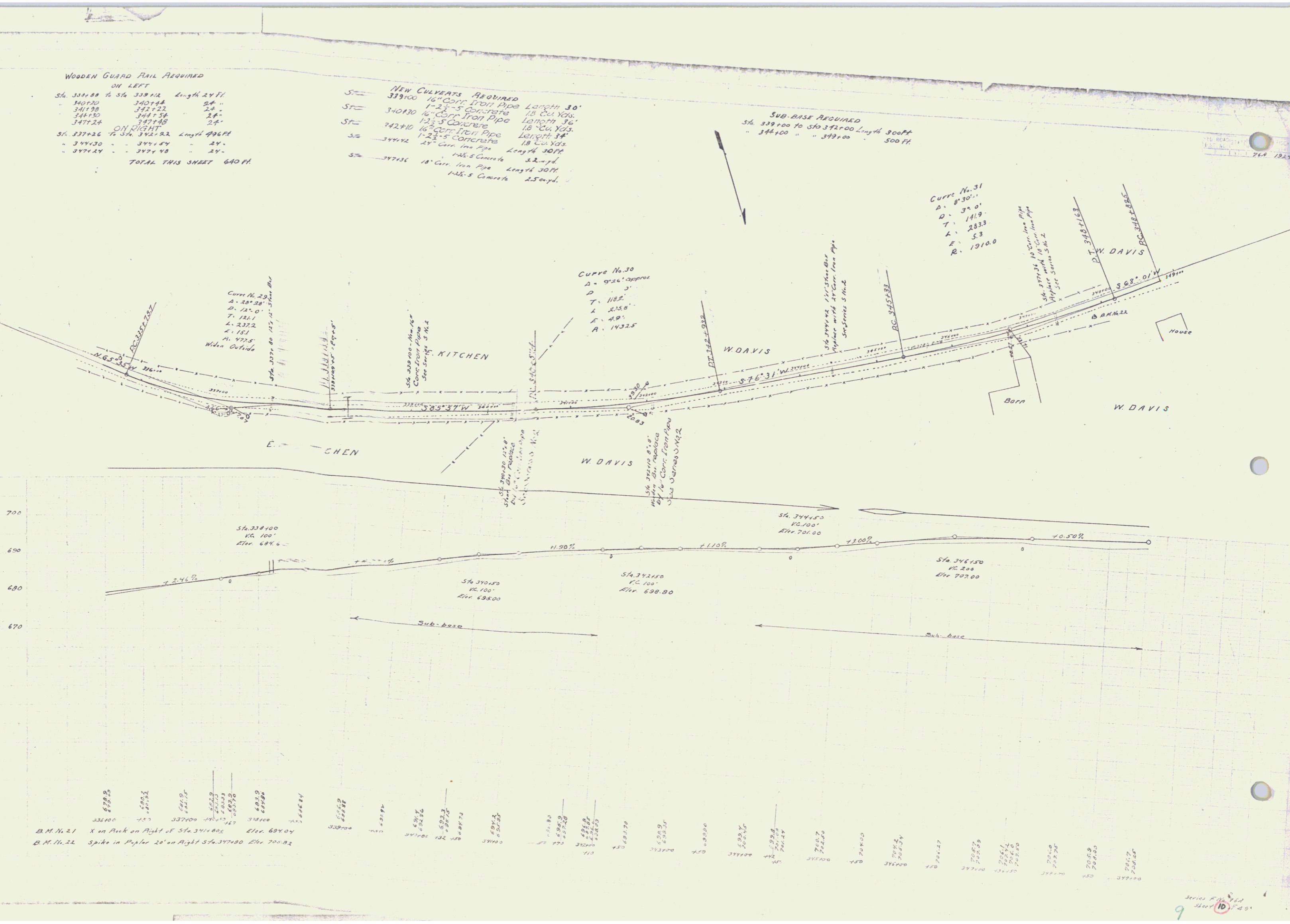
SUB-BASE REQUIRED
Sta. 339+00 to Sta. 342+00 Length 300 FT
Sta. 344+00 " " 349+00 " 500 FT

Curve No. 31
D = 830.0'
P = 32.0'
T = 141.9'
L = 283.3'
E = 5.3'
R = 1910.0'

Curve No. 30
D = 926.0' approx
P = 3'
T = 118.2'
L = 236.4'
E = 4.9'
R = 1432.5'

M. E. WILSON
1924

M. E. WILSON
1924



B.M. 11.21 X on Arch on Right of Sta. 341+00 Elev. 694.04
B.M. 11.22 Spike in Paper 20' on Right Sta. 342+00 Elev. 700.82

WOODEN GUARD RAIL REQUIRED
ON LEFT

Sta. 351124 to Sta. 351148	Length 24 FT
351148 - 351124	24
351124 - 351100	24

ON RIGHT

Sta. 351124 to Sta. 351148	Length 24 FT
351148 - 351124	24
351124 - 351100	24

TOTAL THIS SHEET 672 FT.

NEW CULVERTS REQUIRED

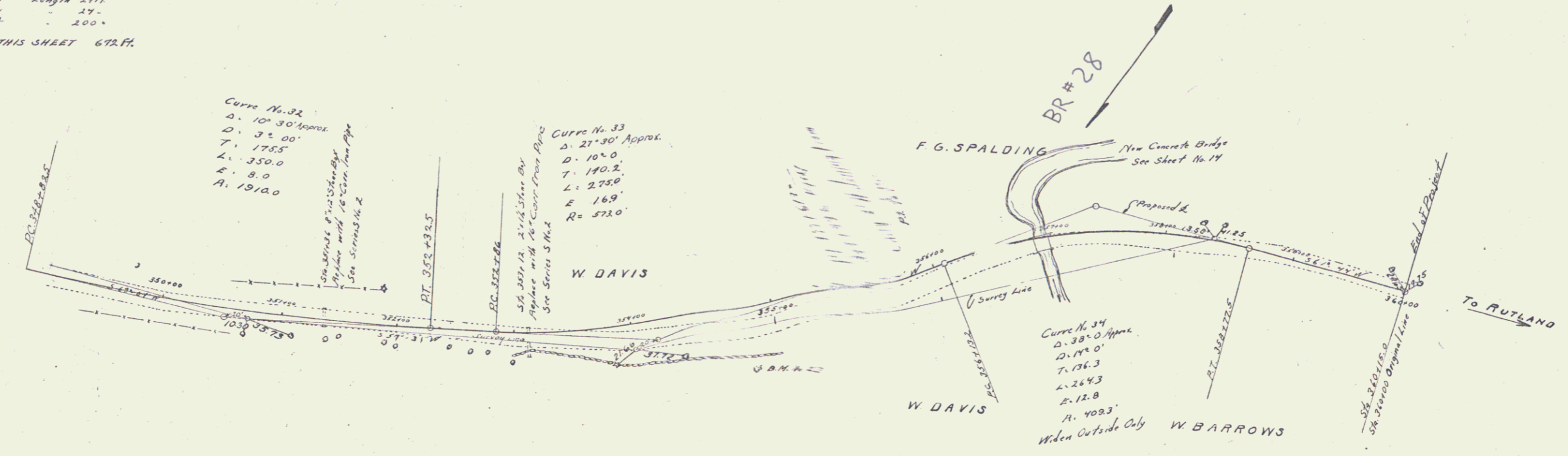
Sta. 351136	16" Cor Iron Pipe	Length 20 FT
351136 - 351116	1-2 1/2" Concrete	18 Cu Yds.
Sta. 351112	16" Cor Iron Pipe	Length 34'
351112 - 351078	1-2 1/2" Concrete	18 Cu Yds.

Sub. B-7

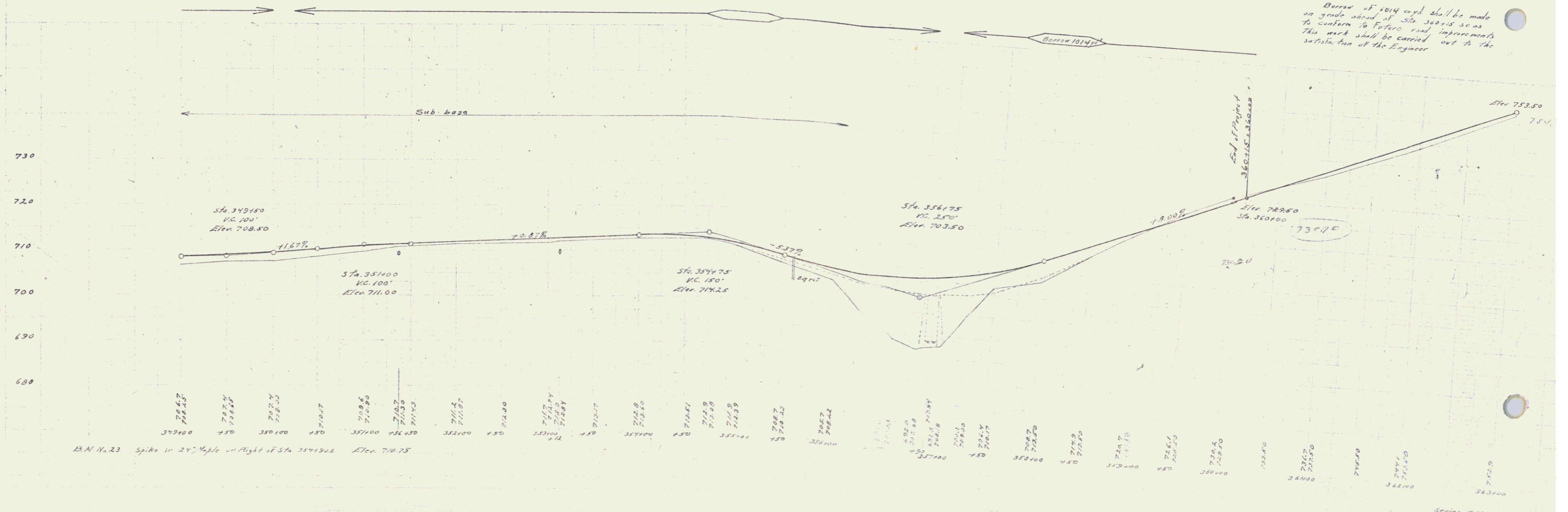
Sta. 349100 to Sta. 351100	Length 200 FT
----------------------------	---------------

W. E. SPALDING

Elevations in feet



Note: Bases of 1014 cwt shall be made on grade ahead of Sta. 360115 so as to conform to future road improvements. This work shall be carried out to the satisfaction of the Engineer.



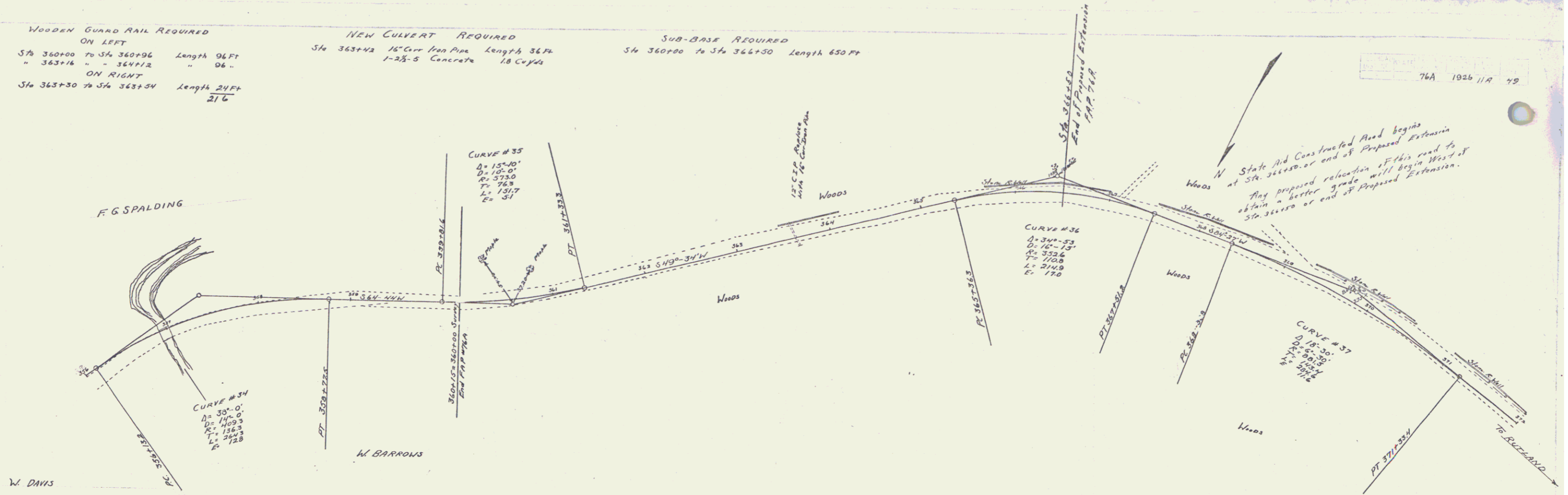
Sta. 349150 Spike in 24" Maple on Right of Sta. 349150 Elev. 710.75

WOODEN GUARD RAIL REQUIRED
ON LEFT
Sta 360+00 to Sta 360+96 Length 96 FT
" 363+16 " " 364+12 " 96 "
ON RIGHT
Sta 363+30 to Sta 363+34 Length 24 FT
216

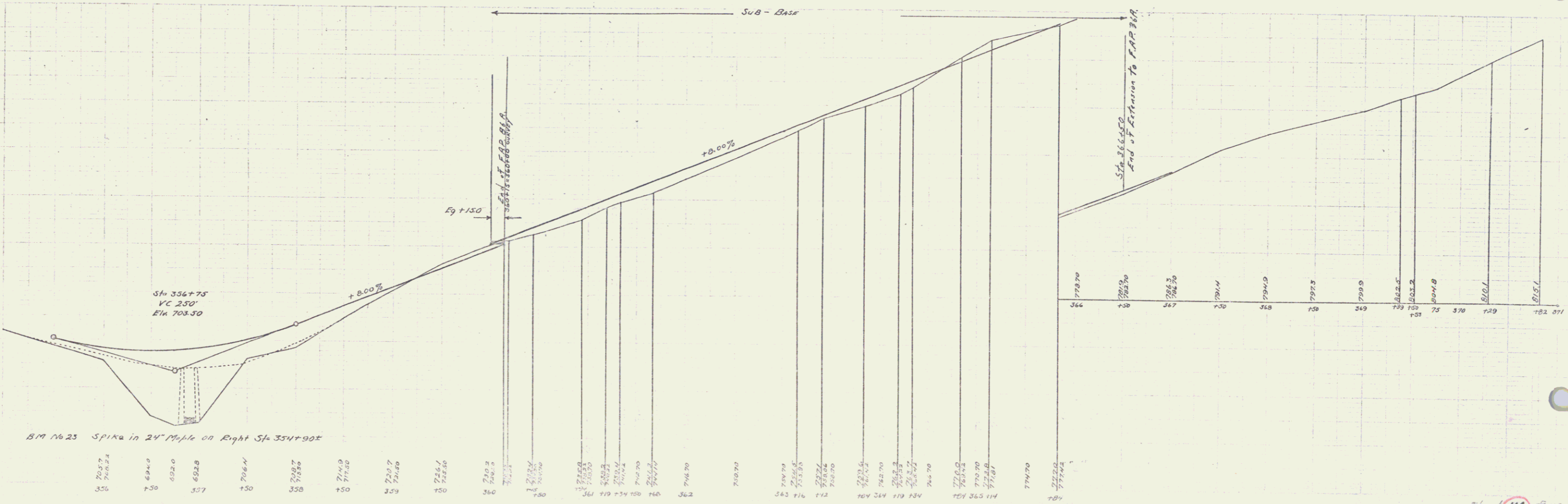
NEW CULVERT REQUIRED
Sta 363+42 18" Cor Iron Pipe Length 36 FT
1-2 1/2-5 Concrete 18 Ccys

SUB-BASE REQUIRED
Sta 360+00 to Sta 366+30 Length 630 FT

76A 1926 11A 49



N State Aid Constructed Road begins at Sta 363+00 or end of Proposed Extension. Any proposed relocation of this road to obtain a better grade will begin West of Sta 363+00 or end of Proposed Extension.



BM 7623 Spike in 24" Maple on Right Sta 354+90.5

703.7
703.24

694.0
692.0

692.8
692.8

706.4
706.4

709.7
709.7

712.7
712.7

716.1
716.1

719.2
719.2

722.4
722.4

725.6
725.6

728.8
728.8

732.0
732.0

735.2
735.2

738.4
738.4

741.6
741.6

744.8
744.8

748.0
748.0

751.2
751.2

754.4
754.4

757.6
757.6

760.8
760.8

764.0
764.0

767.2
767.2

770.4
770.4

773.6
773.6

776.8
776.8

Sheet 11A
Series 11A 76A